

550

WASHINGTON

360,000 SF CONTIGUOUS BLOCK AVAILABLE

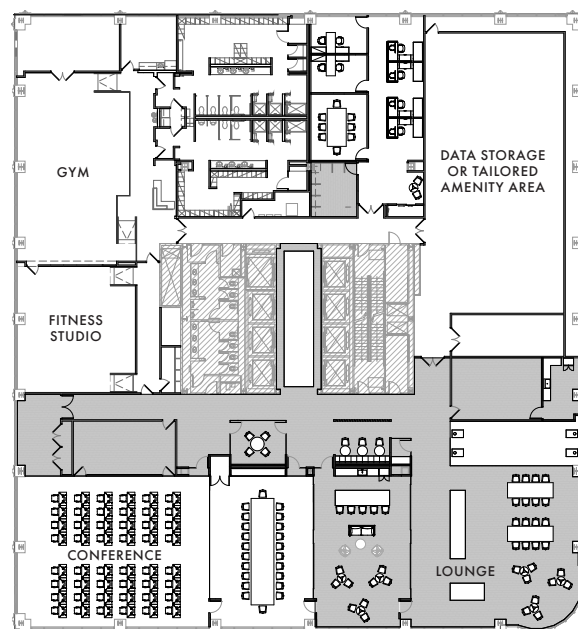
CONTIGUOUS BLOCK

Create a cohesive and branded environment that reflects your culture and values at 550 W. Washington. The block is divisible to a single floor.

- New, debt-free ownership investing in the property
- Dedicated building entrance
- Signage opportunities, including naming rights
- Exclusive passenger elevator(s)
- Onsite parking and loading dock
- Retail spaces available
- Potential for rooftop deck and/or third-floor terrace
- Secure access with turnstiles, manned security, and keycard elevators
- Efficient floor plates with only six columns per floor
- Onsite data center and generator

NEW AMENITY CENTER COMING THIS YEAR

Designed specifically with larger users in mind, the contiguous conferencing and lounge spaces will feature movable partitions to accommodate larger gatherings.



- **Flexible conferencing and event space:** versatile areas for small to midsize meetings or meetings of 250+ people and events even larger, complete with a pre-function/catering area
- **Stylish lounge:** perfect for networking, casual meetings, or unwinding
- **Wellness:** revamped fitness center with updated locker rooms, wellness room, and fitness studio
- **Data center:** existing data center available for exclusive tenant use, or area can be converted to tailored amenity space
- **Outdoor space:** potential for roof deck or private terrace on the 3rd floor

exclusively leased by

BA BRADFORD
ALLEN

FOR MORE INFORMATION
OR TO ARRANGE A TOUR,
PLEASE CONTACT:

ANDY DEMOSS

312 994 5767
ademoss@bradfordallen.com

ALEX GORDON

312 994 5663
agordon@bradfordallen.com