

Rosetree

A KEYSTONE PROPERTY

1400 N. PROVIDENCE ROAD
MEDIA, PA 19063

KEYSTONE
PROPERTY GROUP

SETTLE IN AND NEVER SETTLE

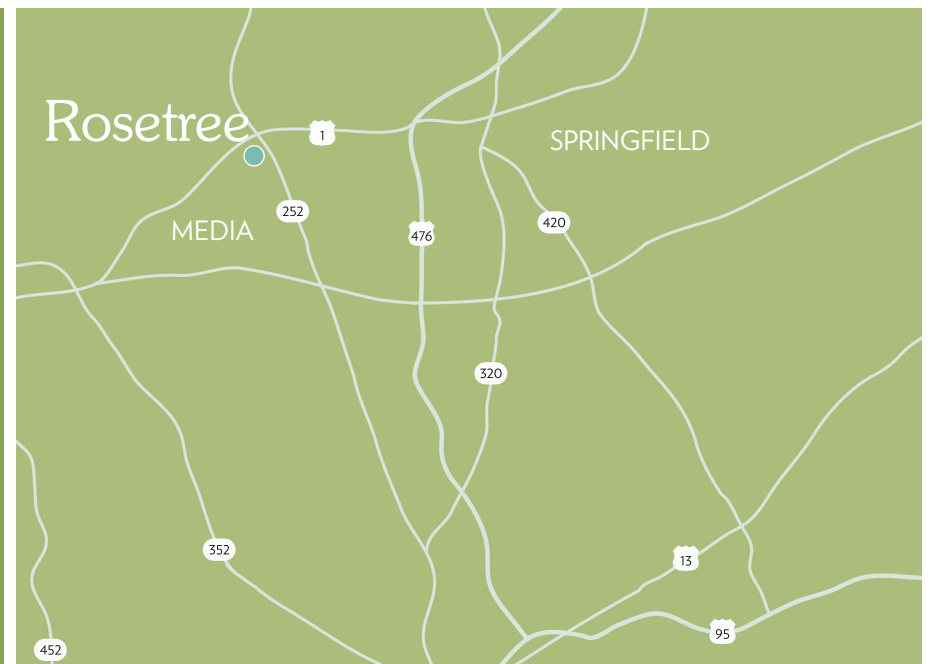
At Rosetree, the first thing we did was throw out the words “office park.” We took a layout that drives productivity and infused it with state of the art technology. We didn’t stop at conference facilities—we added indoor and outdoor common areas to maximize collaboration, and then threw in wireless connectivity throughout the site.

Every detail of the complex is designed to reflect the energy of the changing workforce, with amenities that bring people together and give them the space to push boundaries.

- Modern, Refinished Lobbies
- New Lighting, Carpet & Wall Covering in Corridors
- First-Class Fitness Center
- Café & Outdoor Patio
- WiFi Connectivity
- State of the Art Conference Room
- Refined Main Entrances
- New Monument Signage & Exterior Lights



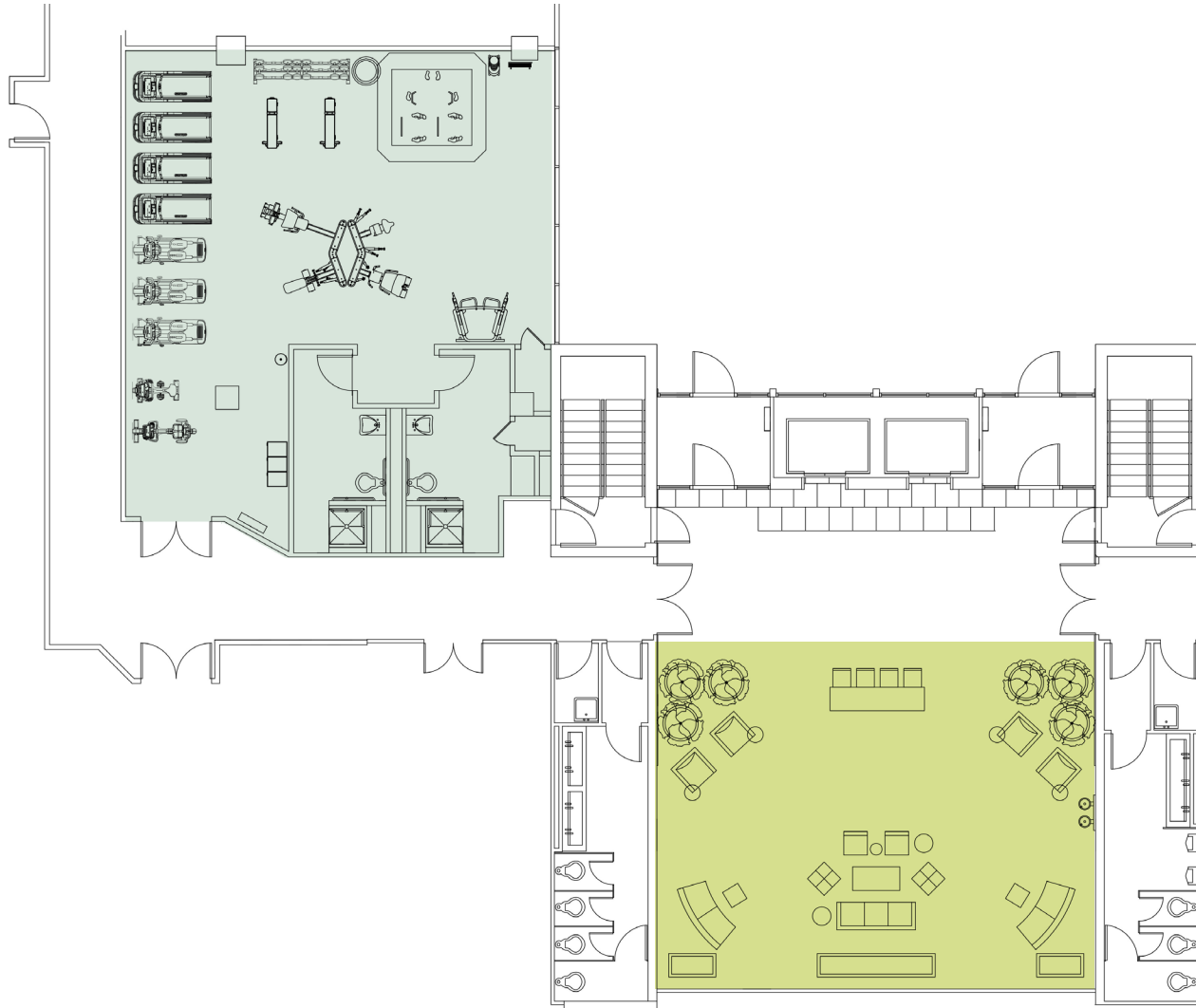
- 📍 Direct access to I-476 (“the Blue Route”) and routes 1, 320 & 252
- 📍 20 minutes to Philadelphia International Airport
- 📍 30 minutes to Center City Philadelphia
- 📍 Walk to Wawa, Rose Tree Inn & Campbell’s Boat House
- 📍 Minutes to downtown Media for added retail and restaurant options



Rosetree

BUILDING ONE

- Refinished Lobby
- Fitness/Wellness Center



Rosetree

BUILDING TWO

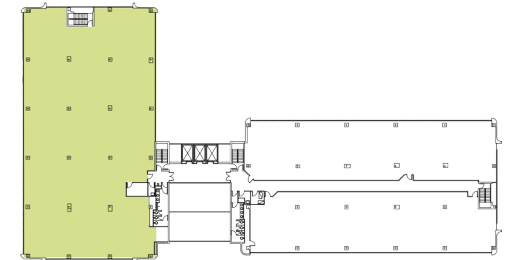
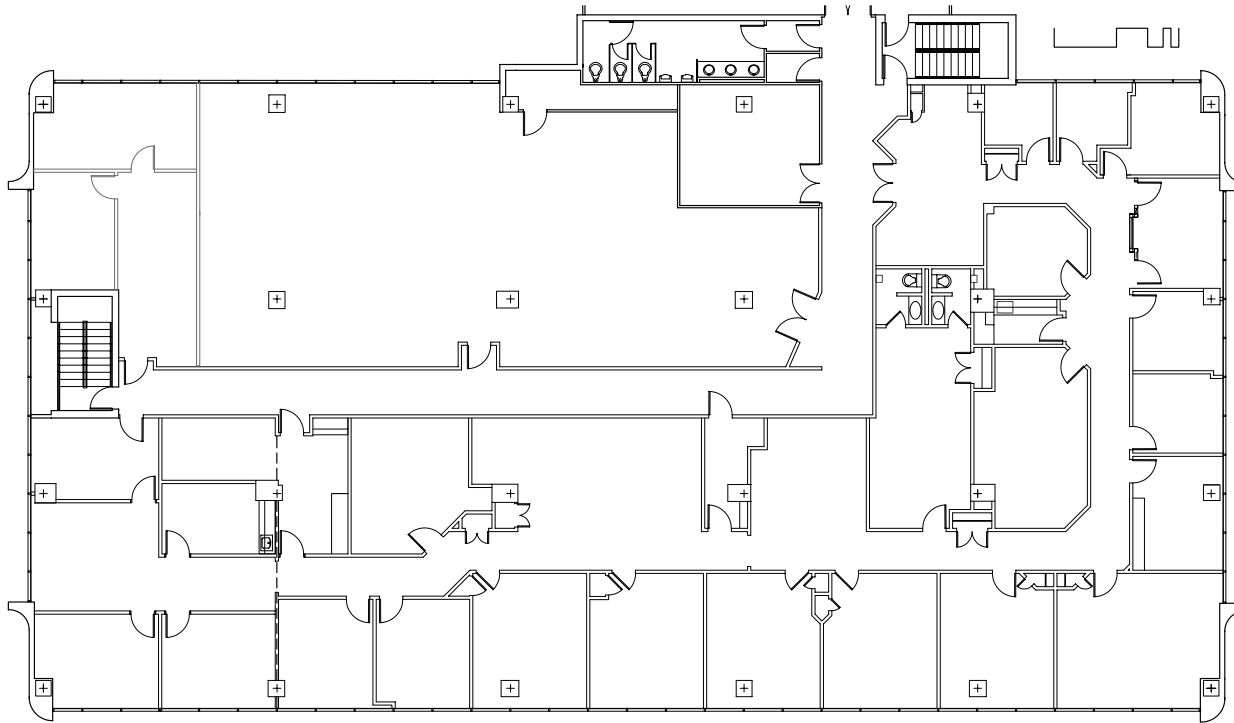
- Refinished Lobby
- Café
- Outside Patio
- Conference Room



Rosetree

AVAILABLE
SPACE

Building One
Third Floor
14,000 square feet



For More Information:
Rich Jones
610.980.7000
rjones@keystonepropertygroup.com



125 E. Elm Street, Suite 400, Conshohocken, PA 19428