

Below Market Rent/Priced to Lease



Building features

- Immediate access to Garden State Parkway via Exit 160
- Prime elevator lobby exposure
- Plug & Play - Fully furnished & wired
- Efficient layout includes perimeter offices with interior window panels and bullpen with Steelcase workstations
- 4 cars per 1,000/SF Parking

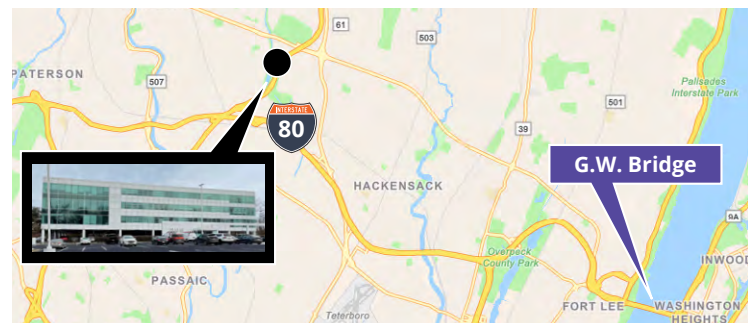
Building Size 107,969 sf - 4 stories

Space Available 10,000 sf - portion of the 3rd floor

Rental Rate \$16.00/psf + T.E.

Lease Term Through March 2027

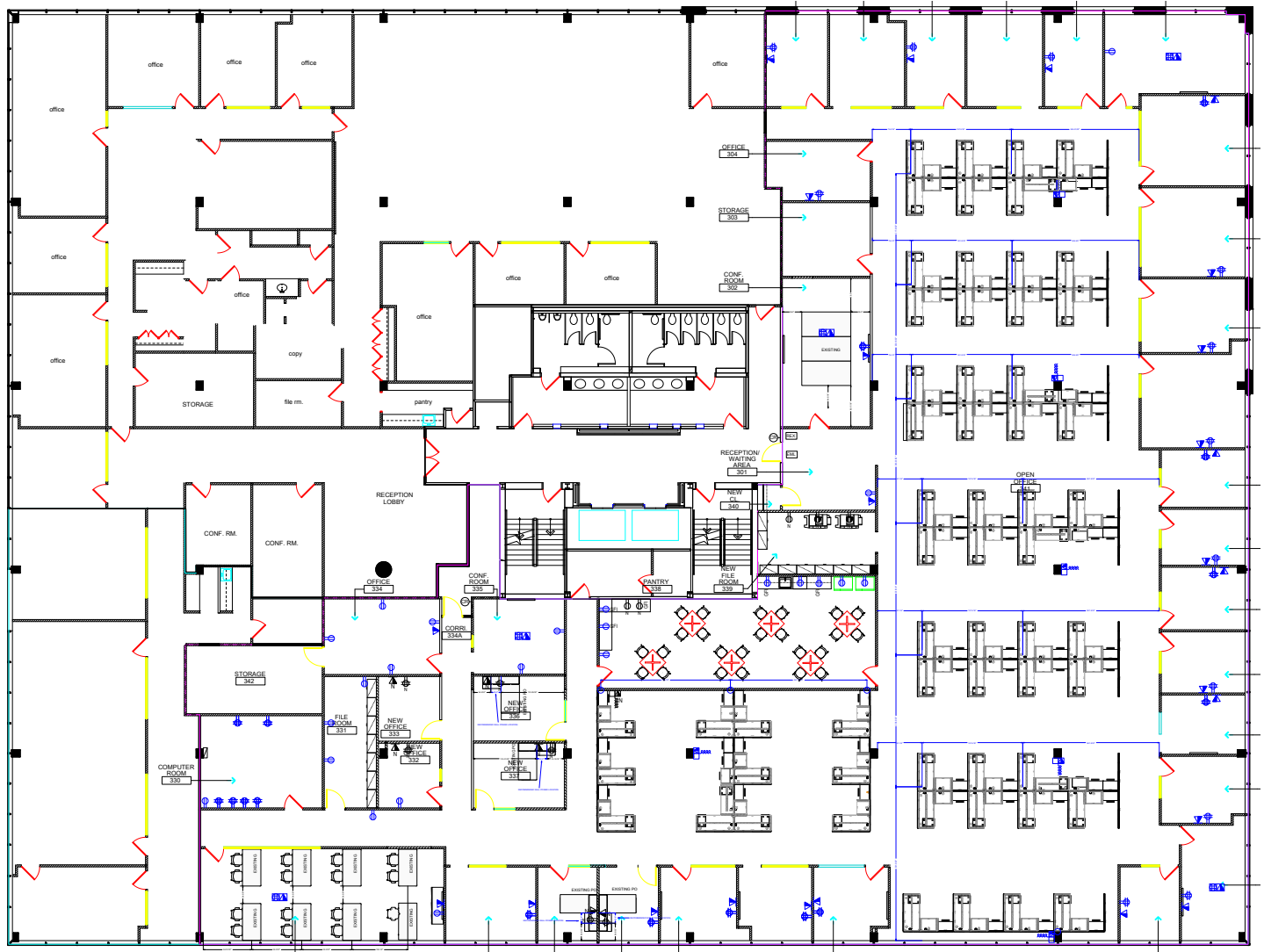
Available Immediately



Get more information

John C. ("J.C.") Giordano, III, Principal
D +1 973 753 1082 | C +1 908 809 0037
jc.giordano@avisonyoung.com

Floor Plan
3rd Floor



Get more
information

John C. ("J.C.") Giordano, III, Principal
D +1 973 753 1082 | C +1 908 809 0037
jc.giordano@avisonyoung.com



Space Available For Sublease

395 West Passaic Street, Rochelle Park, NJ

Interior Images



Get more information

John C. ("J.C.") Giordano, III, Principal
D +1 973 753 1082 | C +1 908 809 0037
jc.giordano@avisonyoung.com

**AVISON
YOUNG**