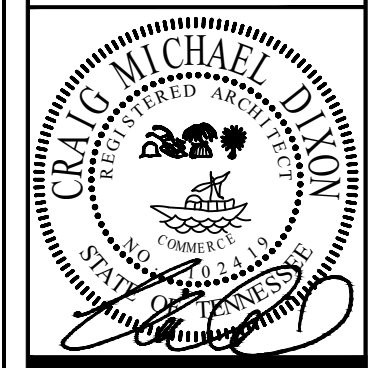
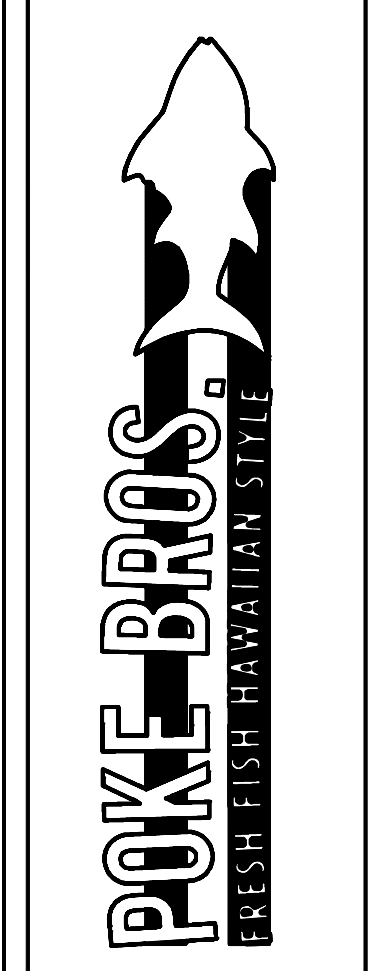


REVISIONS	
02/01/2019	OWNER

1830 CUMBERLAND AVE.
SUITE C (#105)
KNOXVILLE, TN 37916



craig m. dixon
& associates
architects



20151 Hummingbird Circle
Westlake, OH 44145
Telephone: 440.639.5555
Fax: 440.639.9445

Date: 08/15/2018

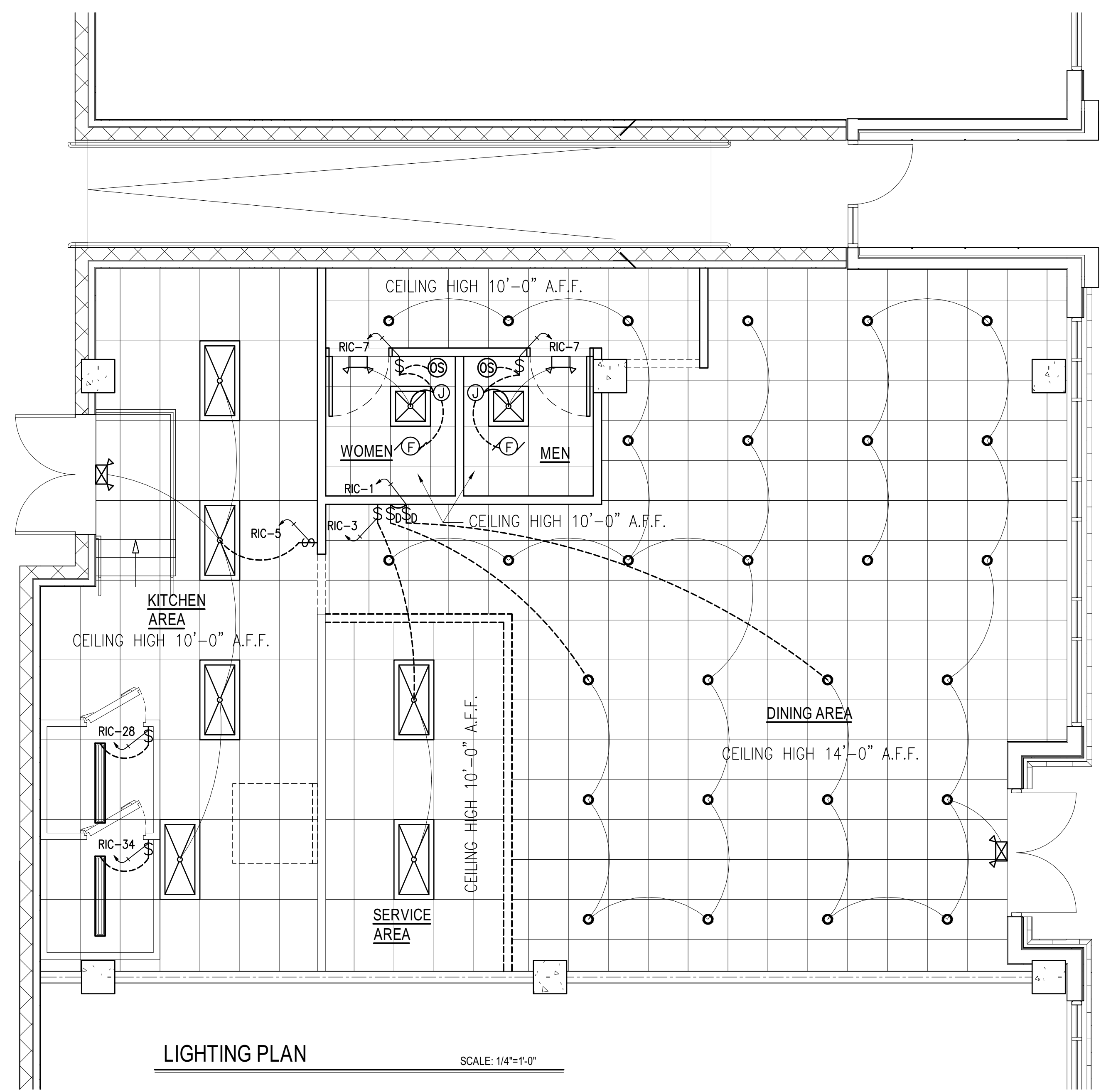
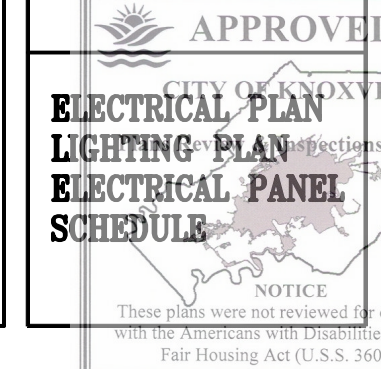
Scale: 1/4"=1'-0"

Drawn: LG

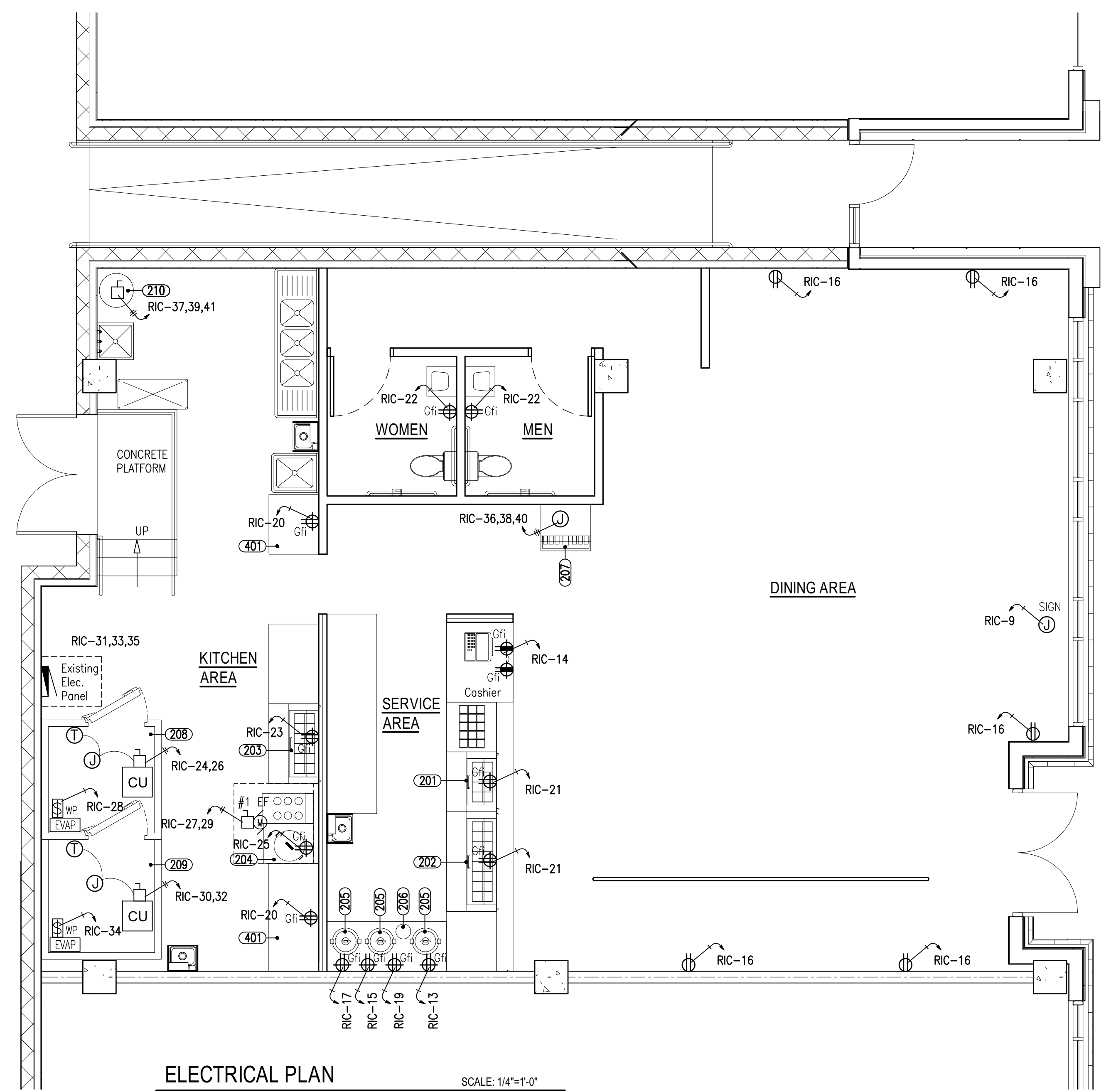
Job: C18-023

Sheet:

E-1



LIGHTING PLAN SCALE: 1/4"=1'-0"



ELECTRICAL PLAN SCALE: 1/4"=1'-0"

ELECTRICAL NOTES & REQUIREMENTS

- ALL WIRING TO COMPLY WITH 2014 NEC OR LATEST ADOPTED, AND LOCAL REQUIREMENTS.
- MINIMUM CIRCUIT TO BE 20 AMP. BREAKER, (2) #12 IN 3/4" CONDUIT (+GND) UNLESS SHOWN OTHERWISE.
- WIRE SIZES BASED ON THE COPPER, A.W.G. ALL WIRES SHALL BE THHN/THWN COPPER. WIRE SMALLER THAN #8 SHALL BE SOLID, #8 AND LARGER STRANDED. PROVIDE DISCONNECTING MEANS AT ALL MOTOR LOADS.
- VERIFY ALL REQUIREMENTS FOR KITCHEN EQUIPMENT WITH EQUIPMENT SUPPLIER.
- MAKE ALL FINAL CONNECTIONS.
- MOUNT ALL ELECTRICAL DEVICES AND SWITCHES AS REQUIRED BY THE ADA AND THE LOCAL STATE BARRIER FREE RULES.
- FUSE ALL MOTORS AND MOTOR ASSEMBLIES IN ACCORDANCE WITH 2014 NEC AND MANUFACTURER'S RECOMMENDATIONS.
- MAINTAIN A MAXIMUM VOLTAGE DROP OF 5% THROUGHOUT THE ENTIRE SYSTEM.
- COORDINATE ALL WORK WITH ARCHITECTURAL, MECHANICAL, AND PLUMBING TRADES IN FIELD.
- VERIFY ALL EXISTING JOB CONDITIONS AND ACCOMMODATE AS REQUIRED FOR A COMPLETE INSTALLATION.

LIGHTING NOTES

- PROVIDE A MIN. 50 FOOT-CANDLES OF LIGHT ON ALL WORKING SURFACES IN THE FOOD PREPARATION AREAS, EQUIPMENT AND UTENSIL WASHING AREAS, AT HAND WASHING LAVATORIES, AND IN TOILET ROOMS.
- PROVIDE A MIN. 20 FOOT-CANDLES OF LIGHT AT A DISTANCE OF 30 INCHES ABOVE THE FLOOR IN WALK-IN COOLERS AND FREEZERS, DRY STORAGE AREAS, AND IN ALL OTHER AREAS.
- ALL LIGHTING FIXTURES AND LIGHT BULBS LOCATED WITHIN FOOD PREPARATION AND STORAGE AREAS SHALL BE SHIELD OR SHATTERPROOF.

ELECTRICAL SYMBOLS LEGEND

SYMBOLS	DESCRIPTION	SYMBOLS	DESCRIPTION
	DUPLEX RECEPTACLE, MTD. +18" AFF		PANEL - SIZE AS NOTED
	240 VOLT RECEPTACLE (HT. AS REQ.)		F-FAN; M-MOTOR; P-PUMP
	QUADRUPLEX RECEPTACLE, MTD. +18"		CKT. HOMERUN (B INDICATES PANEL) "2" DESIGNATES CIRCUIT NUMBER
	COUNTERTOP HT. RECEPTACLE +42"		EXIT/EMERGENCY LIGHT W. BATTERY BACK-UP.
	DUPLEX RECEPTACLE - IN WEATHER PROOF ENCLOSURE OR COVER, GROUND FAULT INTERRUPTER.		EMERGENCY LIGHT W. BATTERY BACK-UP.
	SINGLE POLE SWITCH, MTD +47"		REMOTE HEAD
	DUAL SWITCH, MTD +47"		FLUORESCENT LIGHTING FIXTURE
	DIMMER SWITCH, MTD +47"		FLUORESCENT LIGHTING NIGHT LIGHT
	OCCUPANCY SENSOR		RECESSED LIGHTING FIXTURE
	JUNCTION BOX, FLUSH IF POSSIBLE		HOOD & BUFFET TABLE LIGHT
	TELEPHONE / DATA OUTLET +18"		INCANDESCENT LIGHT W/ 100W BULB
	DED. COMPUTER TERM. OUTLET +18"		PENDANT LIGHT FIXTURE
	DISCONNECT SWITCH W/ STARTER		
	DISCONNECT SWITCH		
	DISHWASHER CONNECTION		
	TRANSFORMER - SIZE AS NOTED		

MAY BE USED ON PROJECT NOTE - NOT ALL SYMBOLS

PANEL: RIC		PANEL SCHEDULE										
400 A MCB		VOLTAGE: 120/208V			PHASE: 3		WIRE: 4			MOUNTING: RECESSED		A.I.C. RATING
DESCRIPTION	BREAKER	WATTS			CKT NO.	CKT NO.	WATTS			BREAKER	DESCRIPTION	
		WIRE	POLE	AMP			A	B	C			AMP
LIGHTS - DINING AREA	12 1 20			364	1	2	4366					
LIGHTS - SERVICE AREA	12 1 20			224	3	4	4366			50 3 6	RTU-2	
LIGHTS - KITCHEN AREA	12 1 20				5	6		4366				
LIGHTS & FAN (TOILET)	12 1 20			728	7	8	360			20 1 12	RECEPT. (ROOFTOP)	
SIGN SPACE	12 1 20			1200	9	10					SPACE	
RICE WARMER	12 1 20			1300	13	14	720			20 1 12	RECEPT. (CASHIER)	
RICE WARMER	12 1 20			1300	15	16	1440			20 1 12	RECEPT. (DINING AREA)	
RICE WARMER	12 1 20				17	18		360		20 1 12	RECEPT. (SERVICE AREA)	
SOUP WARMER	12 1 20			550	19	20	720			20 1 12	RECEPT. (KITCHEN AREA)	
SANDWICH UNIT (2)	12 1 20			996	21	22	720			20 1 12	RECEPT. (TOILET)	
SANDWICH UNIT	12 1 20				23	24		1524		20 2 12	WALK IN COOLER COMPRESSOR CONDENSER	
RICE COOKER	12 1 20			1800	25	26	1524			20 2 12	WALK IN FREEZER COMPRESSOR CONDENSER	
EF-1	12 2 20			480	27	28	409			20 1 12	COOLER EVAP. & LIGHT	
SPACE					29	30		1356		20 2 12	WALK IN FREEZER COMPRESSOR CONDENSER	
SPACE					31	32	1356			20 1 12	FREEZER EVAP. & LIGHT	
SPACE					33	34	409			20 1 12	FREEZER EVAP. & LIGHT	
SPACE					35	36		2100				
WATER HEATER	6 3 60			5000	37	38	2100			20 3 10	SODA DISP. W / ICE MAKER ABOVE	
					39	40	2100					
					41	42					SPACE	
					9742	9200	7846			11146	9444	9706
TOTAL FOR PHASE		A	20888	174.07	AMPS							
		B	18644	155.37	AMPS							
		C	17552	146.27	AMPS							
TOTAL CONNECTED LOAD:			57084		AMPS:	158.57						

NOTE: EXISTING ELECTRICAL SERVICE RISER NO CHANGE

NOTICE: These plans were not prepared in compliance with the Americans with Disabilities Act or the Fair Housing Act (U.S.S. 360407)