



RETAIL

400 HOWARD STREET

330 SF - 698 SF RETAIL OPPORTUNITY



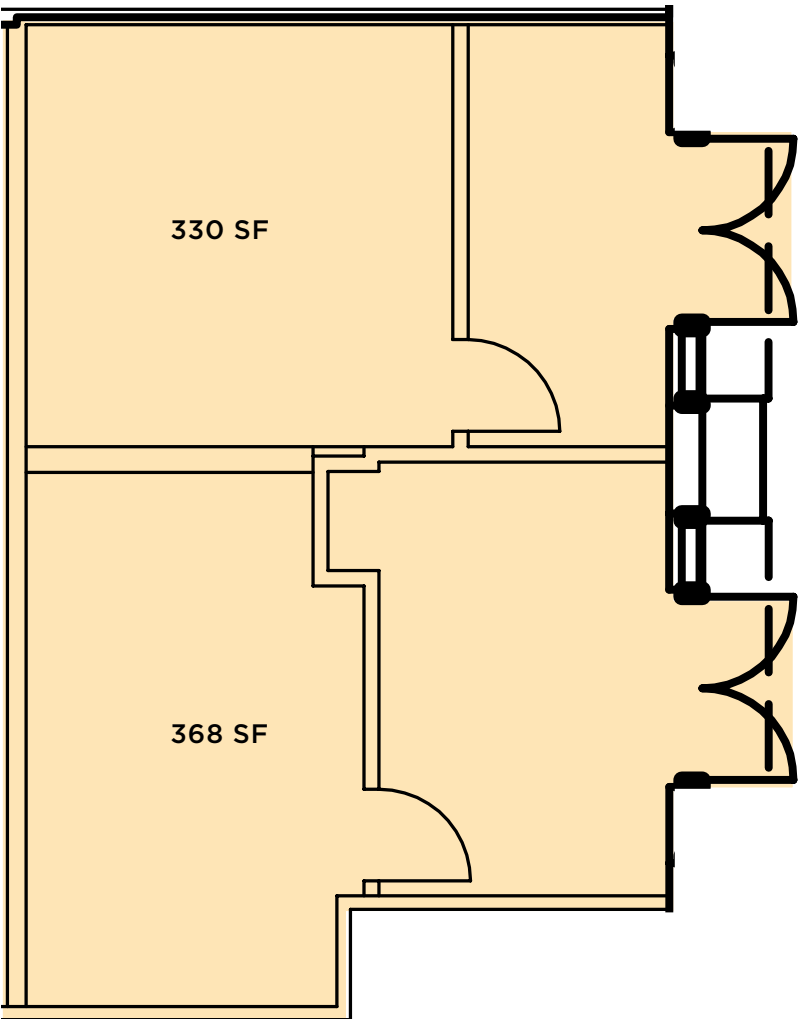


Discover a prime retail opportunity in the heart of Downtown San Francisco. This retail space is strategically located just steps away from the bustling Salesforce Transit Center, ensuring high foot traffic and visibility. Situated on Howard Street, this space benefits from proximity to one of the city's major transit hubs, attracting commuters and tourists alike. An open floor plan offers flexibility for various retail concepts, from boutique shops to cafes. The surrounding area is vibrant with a mix of office buildings, residential complexes, and popular dining options, making it an ideal spot for drawing in customers. Ample visibility with potential for eye-catching signage to capture the attention of passersby. With its unbeatable location and attractive features, this retail space is perfect for businesses looking to thrive in one of San Francisco's most dynamic neighborhoods. Don't miss out on this exceptional opportunity!

FEATURES

- +/- 330 SF - 698 SF
- Potential to combine the spaces or lease separately
- Steps from the Salesforce Transit Center
- Great signage opportunity
- Nearby businesses include Andytown Coffee, Café Venue, Joe & the Juice, Mixiote, Mendocino Farms, Barcha, CorePower Yoga, Bluestone Lane, Philz Coffee, Fitness SF, Walgreens, Salesforce Tower, and many more.

FLOOR PLAN



FREMONT STREET

EAST CUT

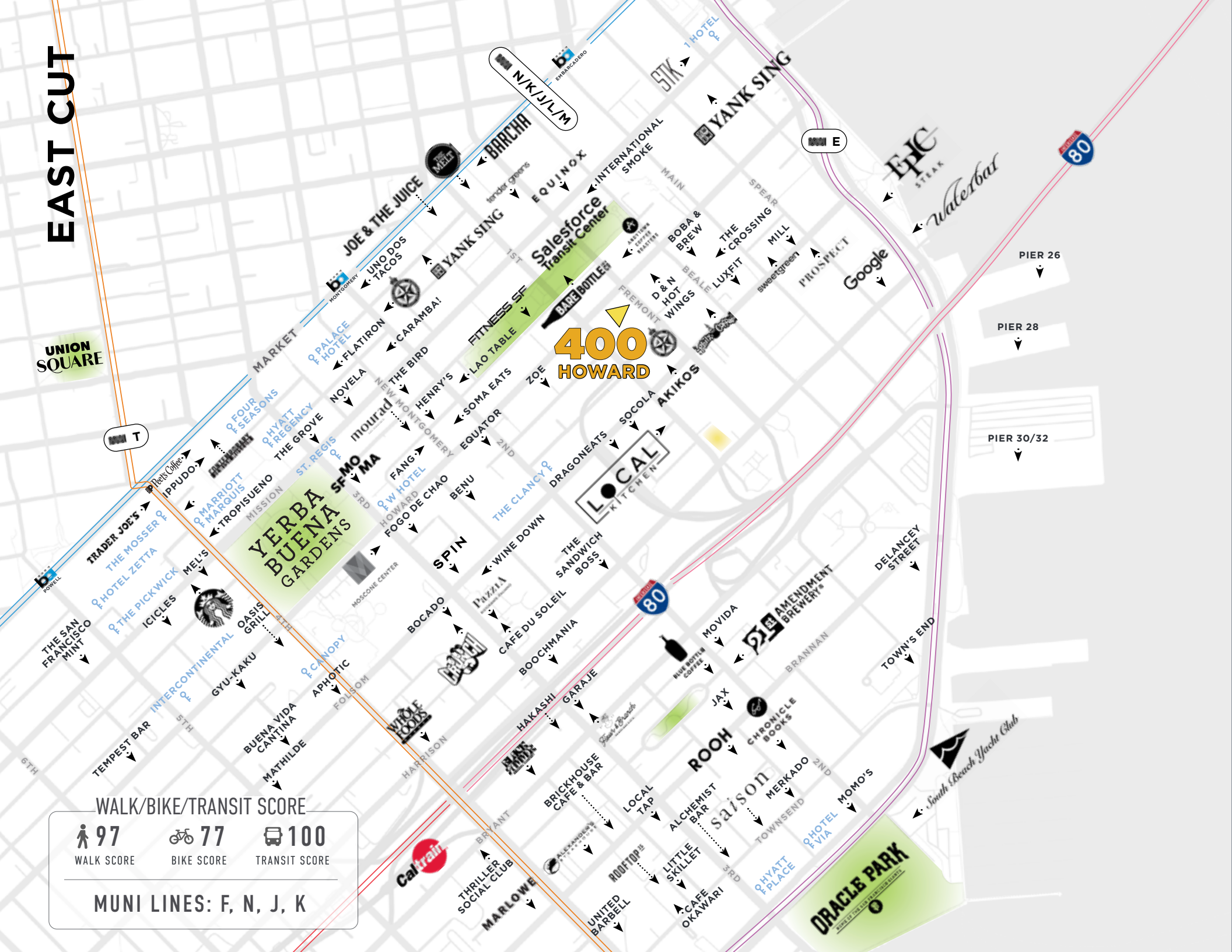
UNION SQUARE

400 HOWARD

WALK/BIKE/TRANSIT SCORE

97 WALK SCORE 77 BIKE SCORE 100 TRANSIT SCORE

MUNI LINES: F, N, J, K





BARCHA



COREPOWER YOGA



BLUESTONE LANE



MIXIOTE



SALESFORCE TRANSIT CENTER



DRAGONEATS



TOWNHALL



ANDYTOWN COFFEE



MENDOCINO FARMS

EAST CUT

400 Howard Street is located in the East Cut neighborhood.

East Cut is a historic neighborhood located in the southeastern part of San Francisco, California. It's known for its stunning views of the San Francisco Bay and the Bay Bridge. It's a vibrant neighborhood with a mix of residential, commercial, and recreational spaces, attracting both residents and visitors alike. Its proximity to downtown San Francisco, the financial district, the waterfront and Mission Bay adds to its appeal, offering convenient access to employment opportunities, entertainment venues, and cultural attractions.

The neighborhood also boasts a diverse array of amenities and neighbors, adding to its appeal as a dynamic and livable neighborhood. Residents and visitors alike can enjoy the convenience of popular establishments such as Philz Coffee, known for its meticulously crafted brews and inviting atmosphere. Nearby, culinary delights await at Dragon Eats, offering a fusion of Asian flavors, and Bluestone Lane Avery Cafe, serving up Australian-inspired cuisine and specialty coffee.



Contact

JOAN RUYLE

Office 415.404.7313

joan@mavenproperties.com

DRE #02006025

NOTICE: This information has been secured from sources we believe to be reliable but we make no representations, warranties, express or implied, as to the accuracy of the information. Listing broker has been given enough information to provide only a preliminary interest in the property. The materials are not to be considered fact. The information contained herein is not a substitute for thorough due diligence investigation. References to square footage, zoning, use, or age are approximate. Please contact the San Francisco Planning Department to verify zoning at (415) 558-6378, as neither broker or landlord represent that this space is suitable for your use. Tenant or Buyer must verify the information at their own expense and bears all the risk for any inaccuracies. By receiving these materials you are agreeing to the disclaimers set forth herein. DRE#01878802

466 Green Street Suite #203

San Francisco, CA 94133

415-781-770

www.mavenproperties.com