



FORMER 63 BED MEDICAL CARE FACILITY FOR SALE

Asking Price: \$995,000

435 Stoneville Rd Ishpeming, Michigan 49849

SPACE PROFILE

43,302

Total SF Available

1978

Year Built

9.17

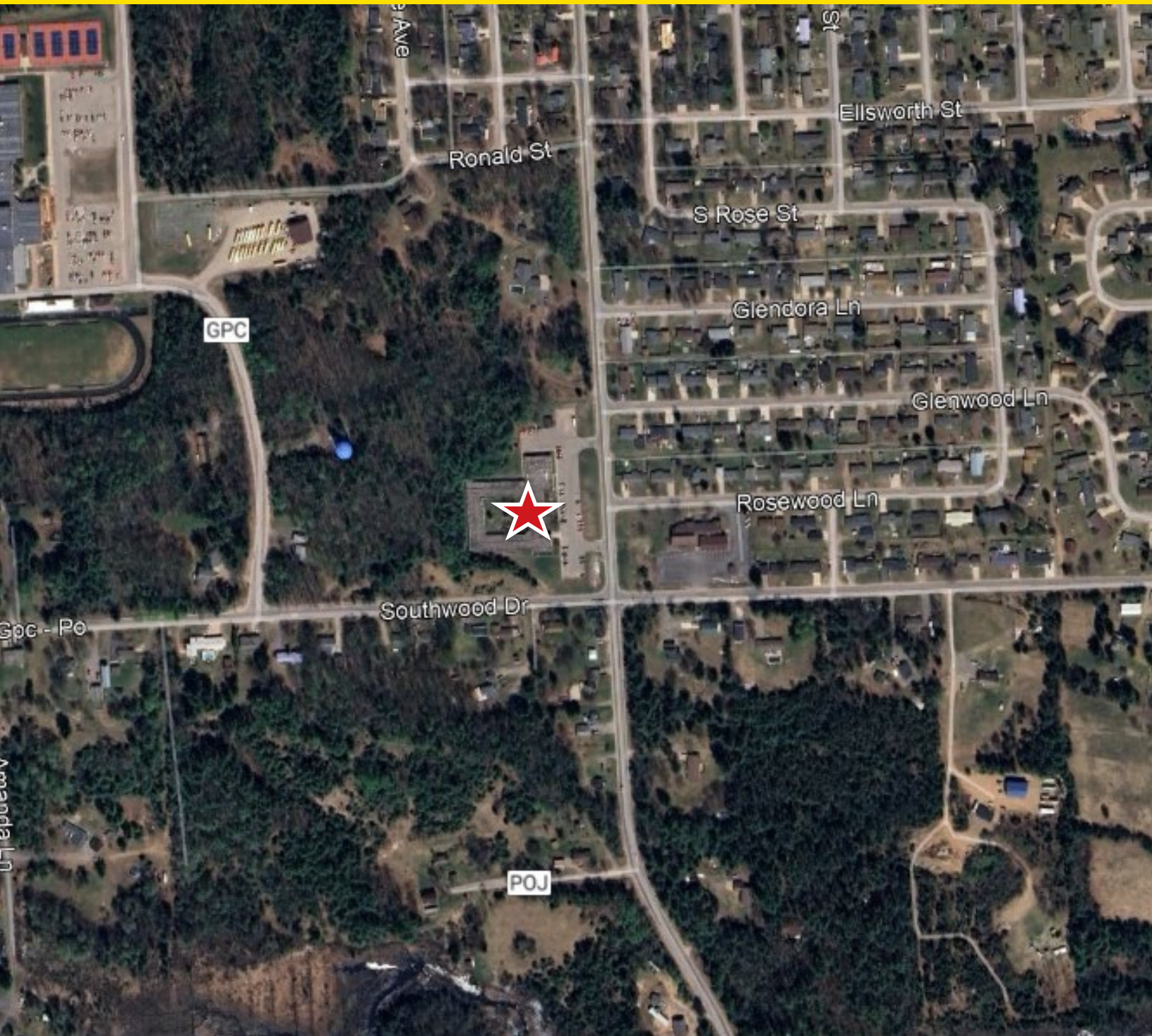
Acres

KEY HIGHLIGHTS

- PUD Zoning
- Parcel Number: 26103C065D
- Site: 399,445 Square Feet
- Former 63 bed medical care facility







The information contained in this communication has been obtained from a variety of sources believed to be reliable but has not been verified. NO WARRANTY OR REPRESENTATION, EXPRESS OR IMPLIED, IS MADE AS TO THE CONDITION OF THE PROPERTY OR ACCURACY OR COMPLETENESS OF THE INFORMATION CONTAINED HEREIN AND SAME IS SUBMITTED SUBJECT TO ERRORS, OMISSIONS, CHANGE OF PRICE, RENTAL OR OTHER CONDITIONS, WITHDRAWAL WITHOUT NOTICE AND TO ANY SPECIFIC CONDITIONS IMPOSED BY THE PROPERTY OWNER OR LESSOR.

savills.us

Terry Huffman

ASSOC Broker/Team Leader
906.360.2505 (cell)
906.225.7653 (office)
Terryhuffman@remax.net
Terryhuffman.com

Carter Cerretani

Assistant Director
313-474-5177
ccerretani@savills.us