

SOUTH SALT LAKE WAREHOUSE FOR LEASE

450 EAST 2200 SOUTH, SOUTH SALT LAKE, UTAH 84115









PROPERTY INFORMATION

- Unit 1: 6,000 SF Warehouse
 - (3) Dock High Doors
 - (2) 14' X 12' Ground Level Doors
- Unit 2: 5,000 SF Warehouse
 - (1) 10' x 10' Ground Level Door
- Unit 3: 3,300 SF Warehouse
 - (1) Dock High Door
- Clearance Height: 28'
- Mezzanine Area
- 15 Minutes to Salt Lake International Airport
- Easy Access to I-80, S.R. 201 and I-15

LEASE RATE REDUCED!

FROM ~~\$0.85/SF~~ TO \$0.75/SF MONTH NNN

TRAVEL TIMES

	TRAX STATION 1300 SOUTH	2 MINS
	I-80 ACCESS	3 MINS
	I-15 ACCESS	5 MINS
	S.R. 201 ACCESS	5 MINS
	DOWNTOWN SALT LAKE	12 MINS
	SALT LAKE INTERNATIONAL AIRPORT	15 MINS

WEST HARADIN

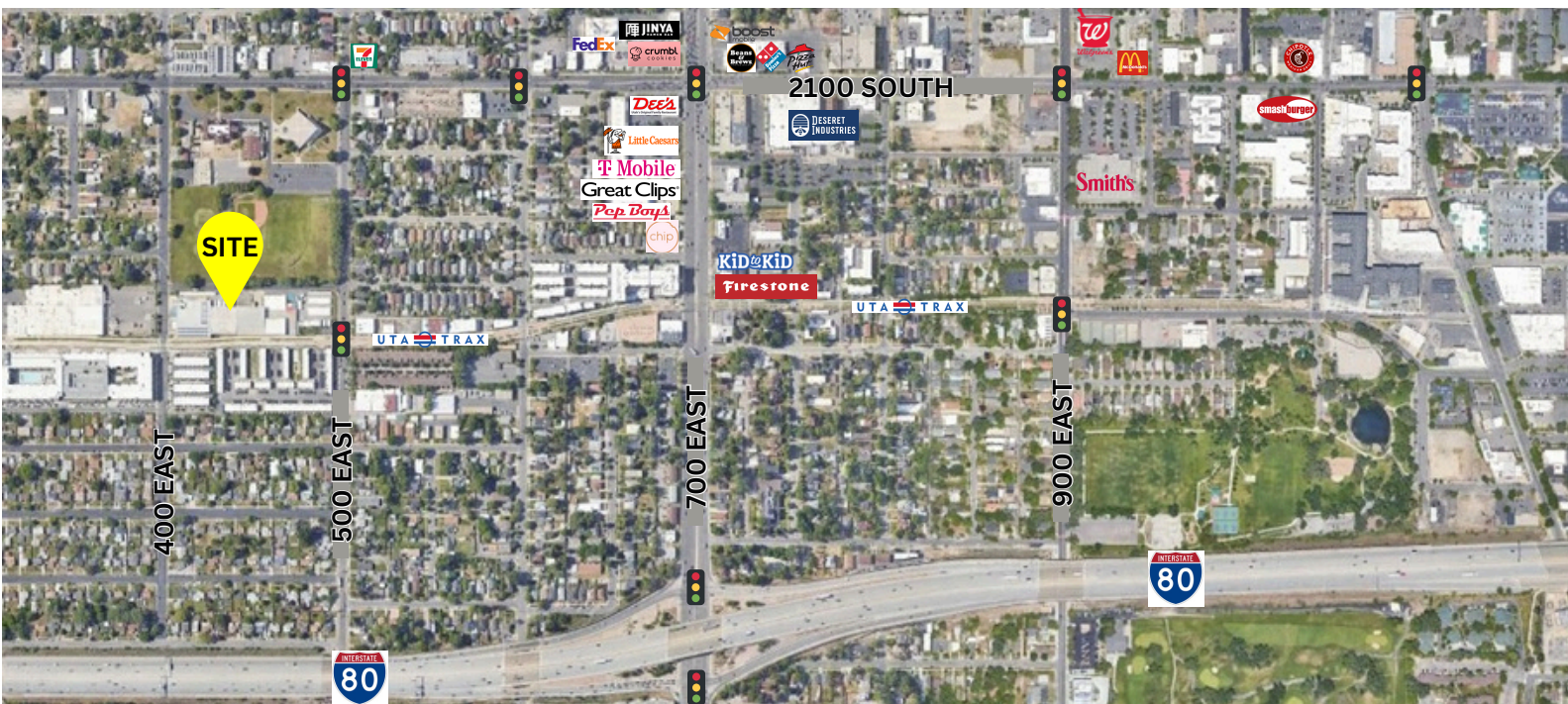
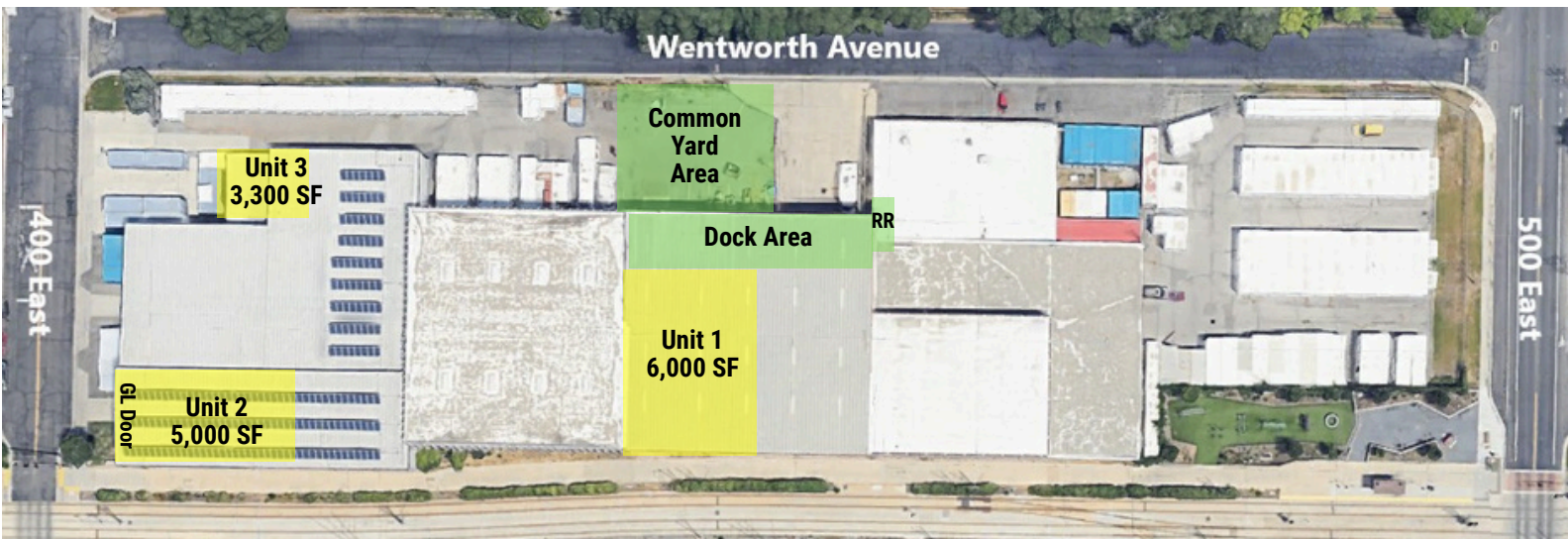
801.617.1700

JEREMY SIEVERTS

WEST.HARADIN@CRCNATIONWIDE.COM JEREMY.SIEVERTS@CRCNATIONWIDE.COM

SOUTH SALT LAKE WAREHOUSE FOR LEASE

450 EAST 2200 SOUTH, SOUTH SALT LAKE, UTAH 84115



This information is given with the understanding that all negotiations and/or real estate activity related to the property described above shall be conducted through this cRc Nationwide office. The above information while not guaranteed, was obtained from sources we believe to be reliable.

WEST HARADIN

801.617.1700

JEREMY SIEVERTS

WEST.HARADIN@CRCNATIONWIDE.COM JEREMY.SIEVERTS@CRCNATIONWIDE.COM