

103 N WRIGHT AVE

9,966 SF Industrial Property



LISTING INFORMATION

ADDRESS:	103 N Wright Ave, Cle Elum WA
TOTAL AVAILABLE SF:	9,966 SF (divisible)
SUITE A (SOUTH):	4,968 SF; 5 rollup doors; one restroom; 69' wide x 72' deep
SUITE B (NORTH):	4,998 SF; 3 rollup doors; one restroom; 51' wide x 46' deep
LOT SIZE:	15,000 SF
CLEAR HEIGHT:	14'
LOADING:	8 total 12' rollup doors
POWER:	Heavy Power
LEASE RATE:	\$1.00 SF/month (NNN)
COMMENTS:	Suite B includes second floor office or living space with restroom and views of Poeh Point

LOCATION



We obtained the information above from sources we believe to be reliable. However, we have not verified its accuracy and make no guarantee, warranty or representation about it. It is submitted subject to the possibility of errors, omissions, change of price, rental or other conditions, prior sale, lease or financing, or withdrawal without notice. We include projections, opinions, assumptions or estimates for example only, and they may not represent current or future performance of the property. You and your tax and legal advisors should conduct your own investigation of the property and transaction.

103
N WRIGHT AVE

9,966 SF Industrial Property

Amanda Hahnemann, CCIM
ahahnemann@lee-associates.com
206.773.2691

Property Photos

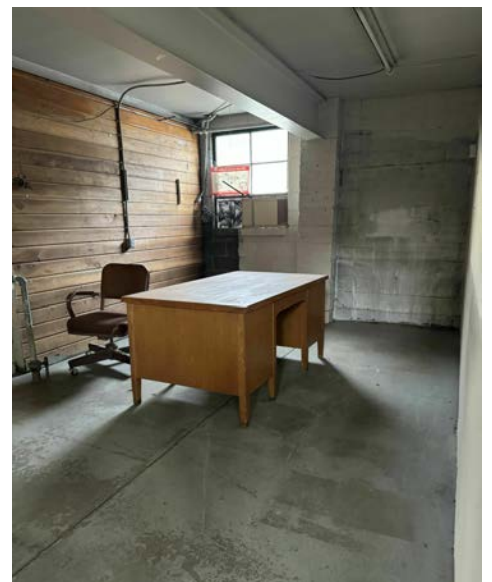


103 N WRIGHT AVE

9,966 SF Industrial Property

Amanda Hahnemann, CCIM
ahahnemann@lee-associates.com
206.773.2691

Property Photos



103 N WRIGHT AVE

9,966 SF Industrial Property

Amanda Hahnemann, CCIM
ahahnemann@lee-associates.com
206.773.2691

Floor Plans

