

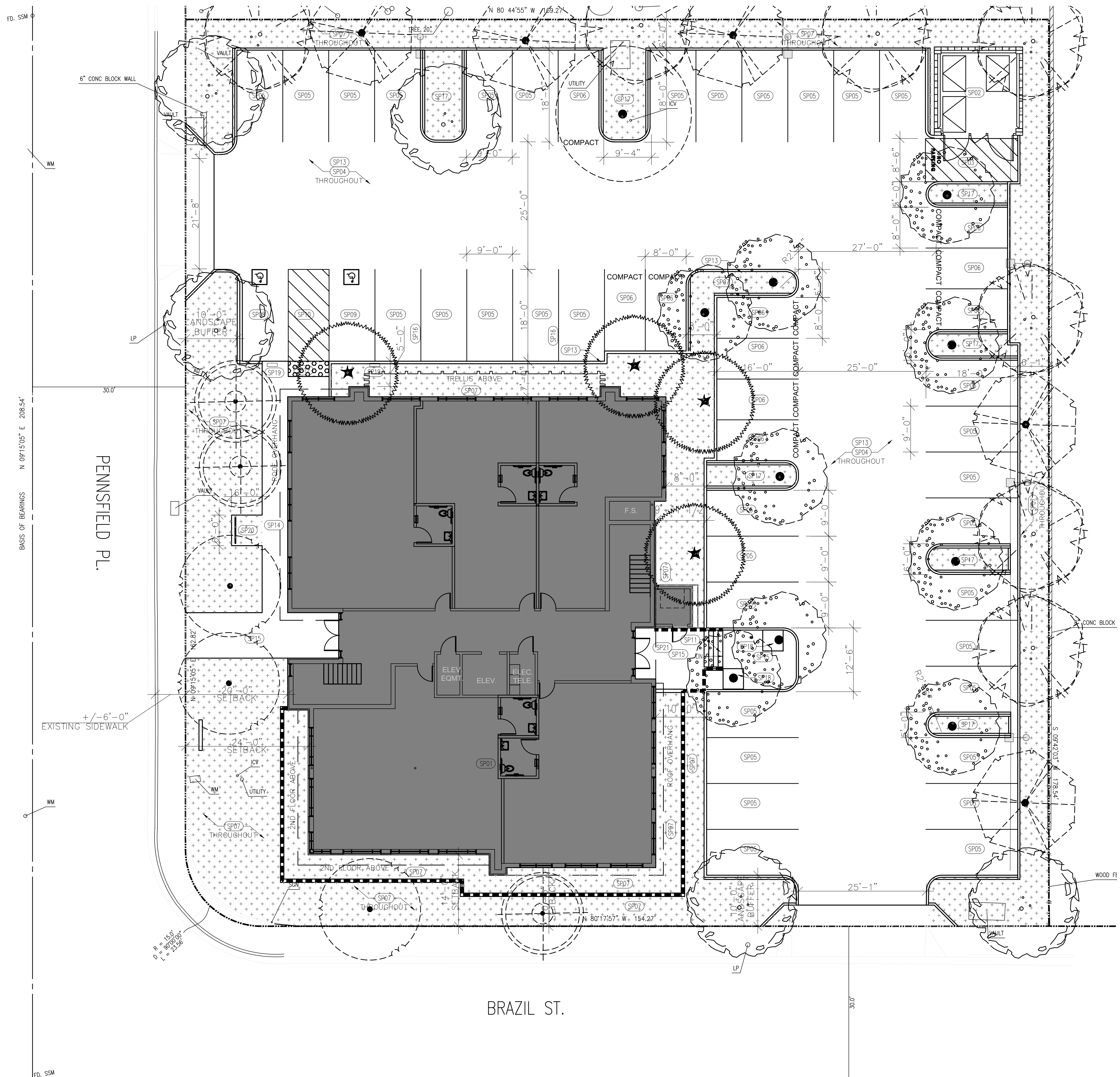
REVISIONS:		
NO.	DESCRIPTION	DATE

MEDICAL OFFICE BUILDING

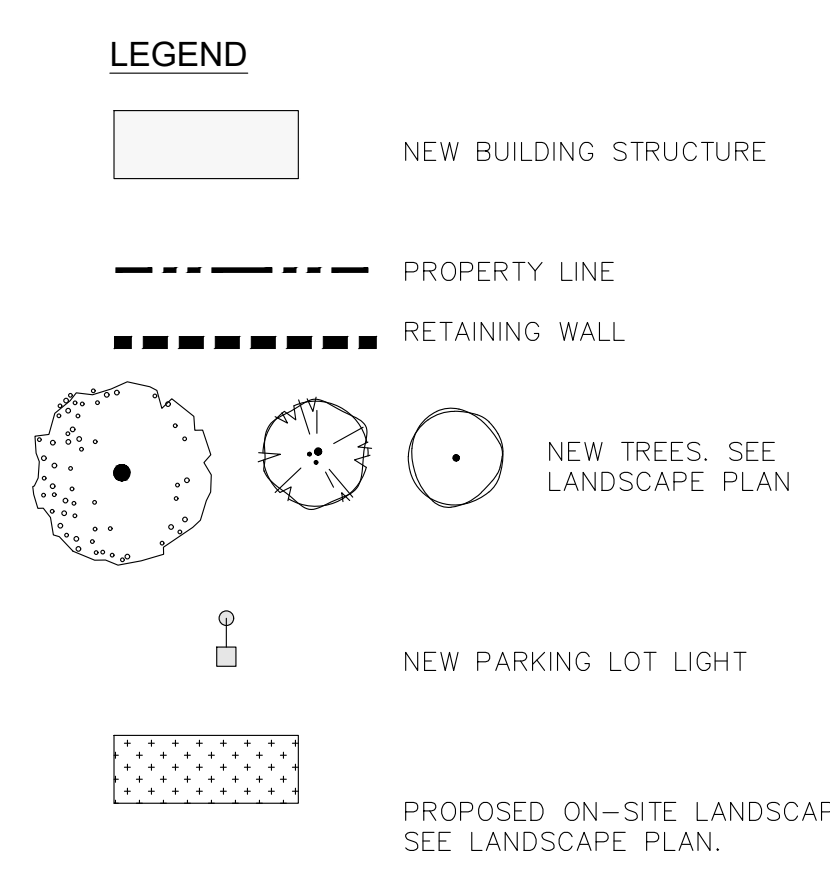
420 PENNSFIELD PLACE

THOUSAND OAKS, CALIFORNIA

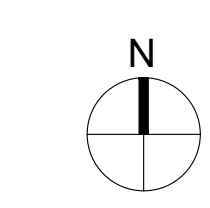
APN: 669-0-021-080



- SITE PLAN KEYNOTES**
- SP01 NEW TWO-STORY PROFESSIONAL OFFICE BUILDING.
 - SP02 NEW 3-BIN TRASH ENCLOSURE PER CITY OF THOUSAND OAKS TRASH ENCLOSURE GUIDELINES. SEE ENT1.2 FOR SPECIFICATIONS ON TRASH ENCLOSURE.
 - SP03 NEW CONC. APRON FOR TRASH ENCLOSURE. SEE ENT1.2 FOR SPECIFICATIONS ON TRASH ENCLOSURE.
 - SP04 NEW ASPHALT PAVING
 - SP05 NEW PARKING SPACE 90 DEGREE 9'-0" WIDE BY 18'-0" DEEP
 - SP06 NEW PARKING SPACE 90 DEGREE 8'-0" WIDE BY 16'-0" DEEP. PROVIDE WORDING "COMPACT" ON THESE SPACES. 16'-0" DEEP UNLESS OTHERWISE NOTED ON PLAN.
 - SP07 NEW LANDSCAPING THROUGHOUT INCLUDING BUT NOT LIMITED TO GROUND COVER, BOULDERS, SHRUBS, GRASSES AND TREES.
 - SP08 NEW ACCESSIBLE PARKING SPACE
 - SP09 NEW VAN ACCESSIBLE PARKING SPACE
 - SP10 NEW VAN ACCESSIBLE LOADING ZONE
 - SP11 NEW CONC. STEPS WITH HANDRAILS BOTH SIDES TO BUILDING ENTRANCE
 - SP12 NEW TRUNCATED DOMES AT TRANSITION BETWEEN SIDEWALK TO VAN ACCESSIBLE LOADING SPACE.
 - SP13 NEW CONC. CURB AS SHOWN THROUGHOUT. RADIUS ON CURB 3'-0" UNLESS OTHERWISE NOTED.
 - SP14 NEW CONC. WALKWAY AROUND BUILDING
 - SP15 NEW CONC. WALKWAY TO BUILDING ENTRANCES
 - SP16 PROPOSED WIDTH OF BUFFER. REQUIRED BUFFER 10'-0"
 - SP17 NEW LANDSCAPE PLANTER FINGER. MINIMUM WIDTH 5'-0"
 - SP18 NEW TREE GRATES
 - SP19 ELECTRIC VEHICLE CHARGING
 - SP20 SHORT-TERM BICYCLE PARKING
 - SP21 LONG-TERM BICYCLE PARKING



PROPOSED SITE PLAN
SCALE: 1" = 10'-0"



FD. SSM
BASIS OF BEARINGS N 09°15'05" E 208.54'
P = 153.07
L = 23.50'

PENNSFIELD PL.

BRAZIL ST.

CD1.1