

# FOR LEASE



## 3700/3710 Woodland Drive

Anchorage, AK

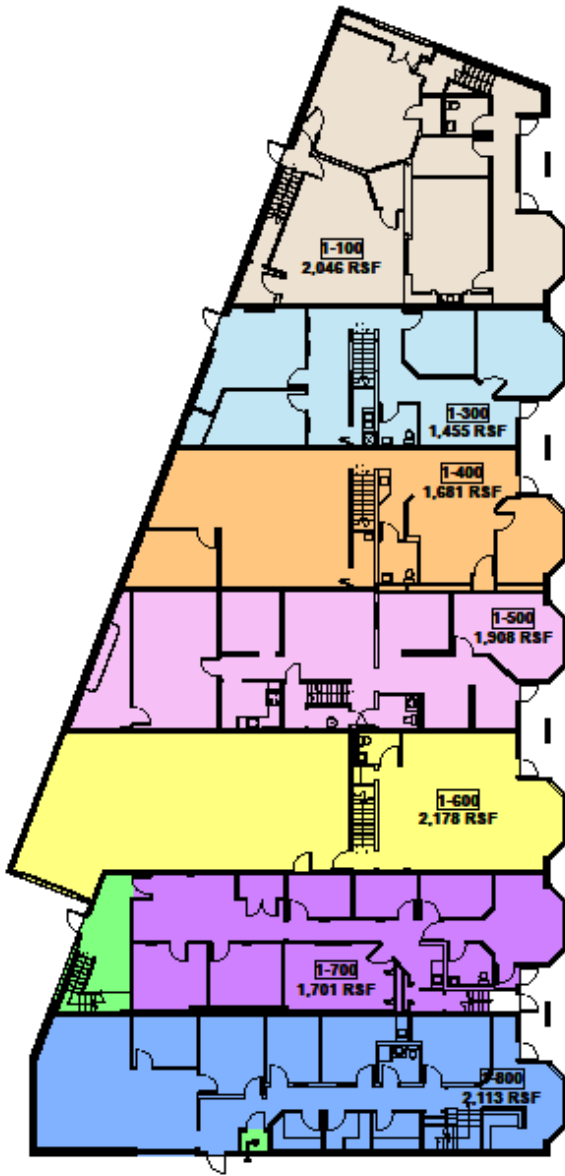
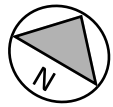
Suite 400 - 3,328 sf  
Suite 500 - 3,305 sf  
Suite 800 - 4,023 sf  
Suite 900 - 4,450 sf  
Suite 2100 - 1,483 - 6,365 sf



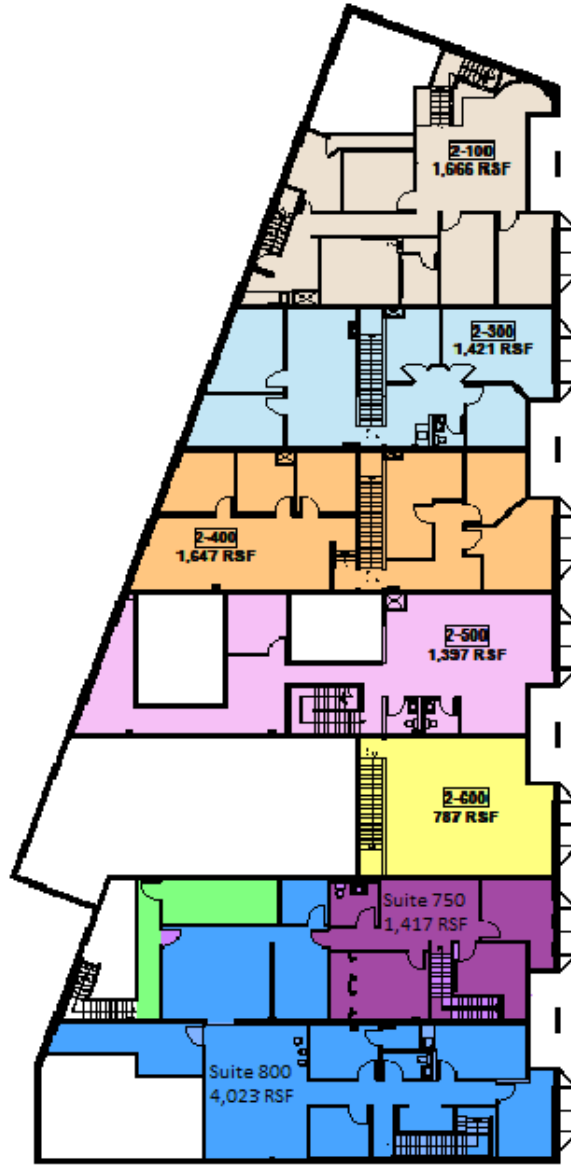
- Convenient location
- Ample parking available
- Office and warehouse space
- Close to the airport and Midtown core
- Excellent visibility from Spenard

MLS# 21-2384, 21-2380, 21-4426, 21-2385, 22-15611

# FLOOR PLAN



1st Floor

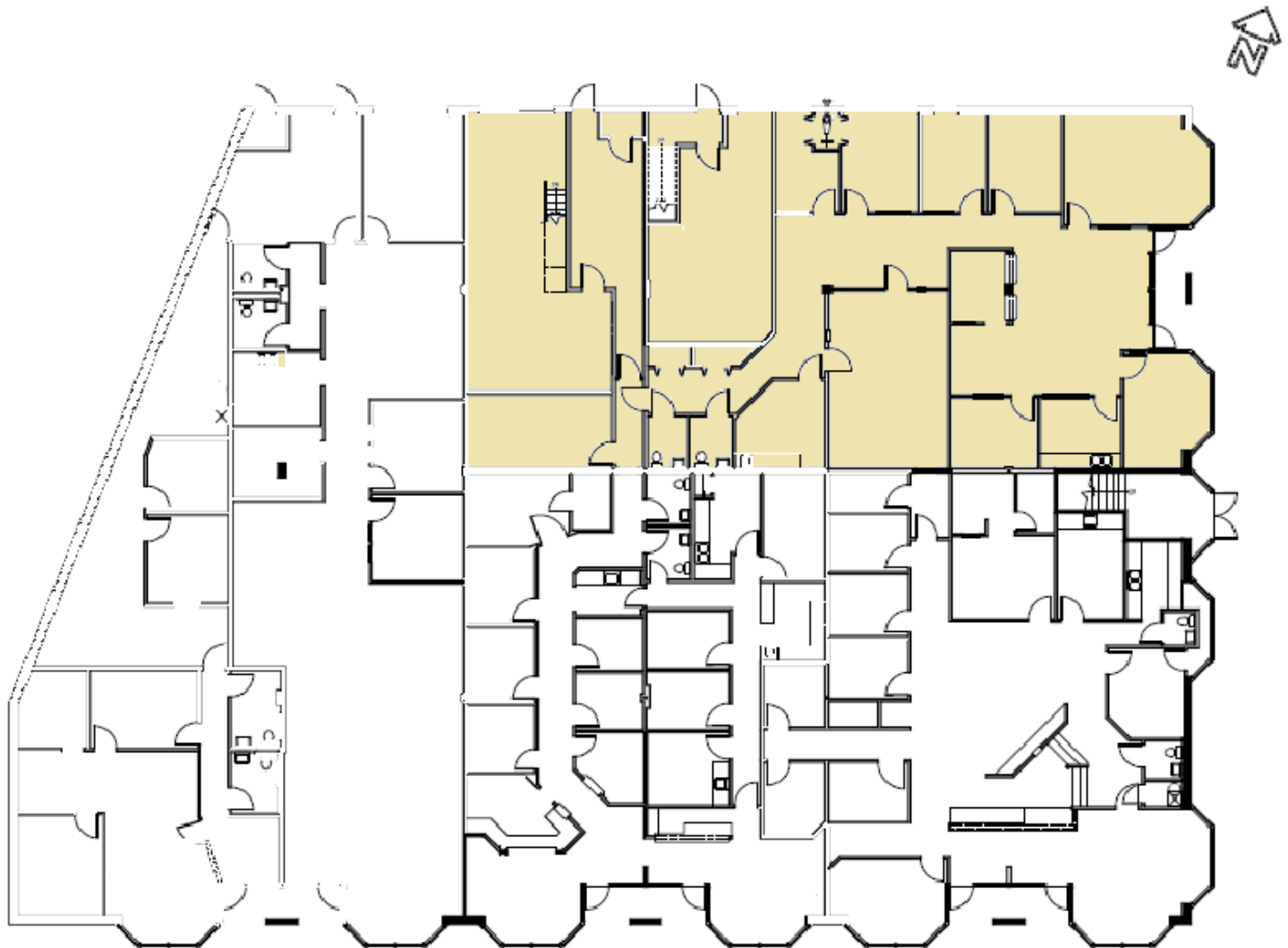


2nd Floor

## 3700 WOODLAND DRIVE

Suite 400	3,328 sq. ft.	\$1.35 psf
Suite 500	3,305 sq. ft.	\$1.35 psf
Suite 800	4,023 sq. ft.	\$1.35 psf

# FLOOR PLAN



---

## 3710 WOODLAND DRIVE

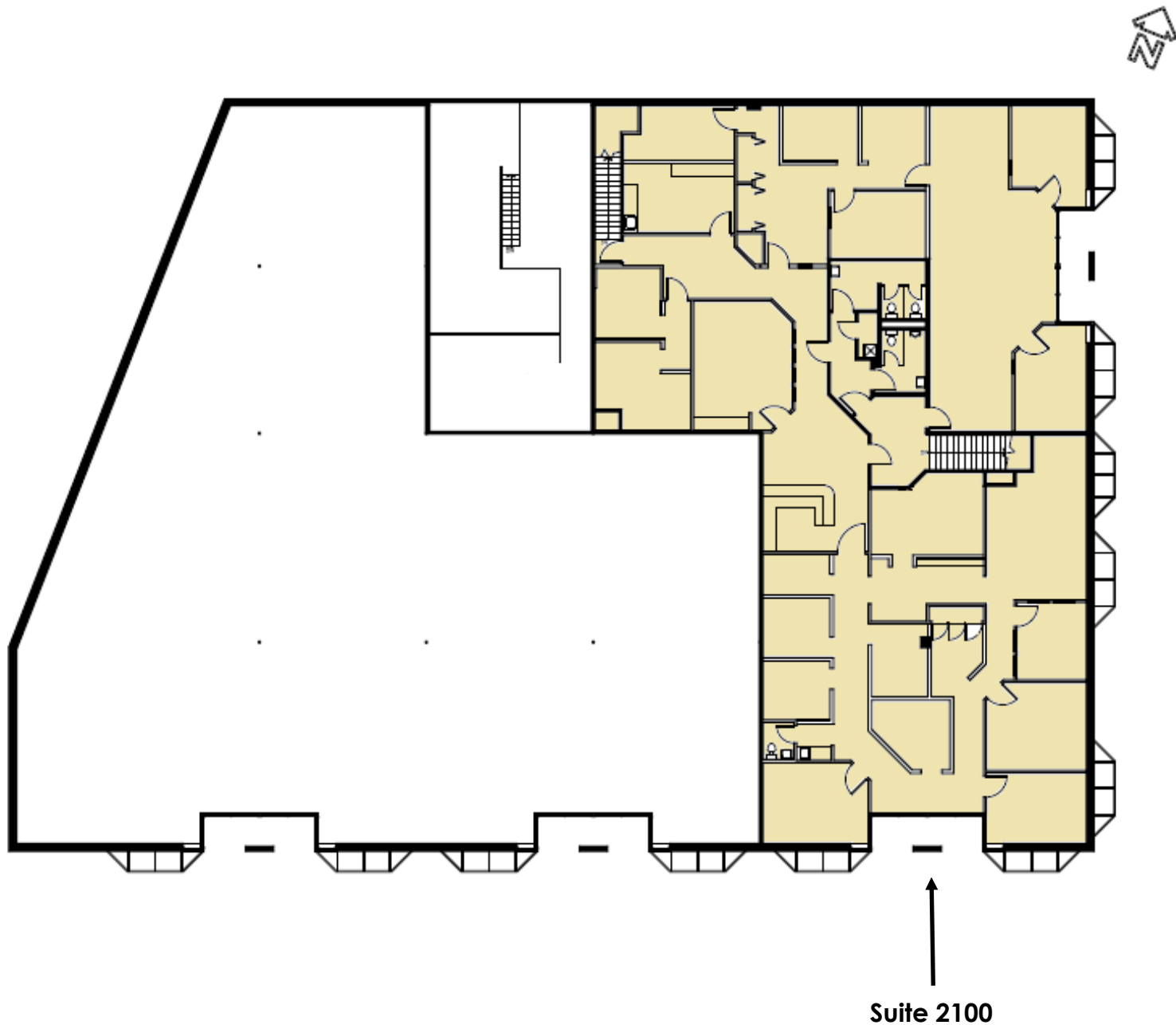
First Floor

Suite 900

4,450 rsf

\$1.35 psf

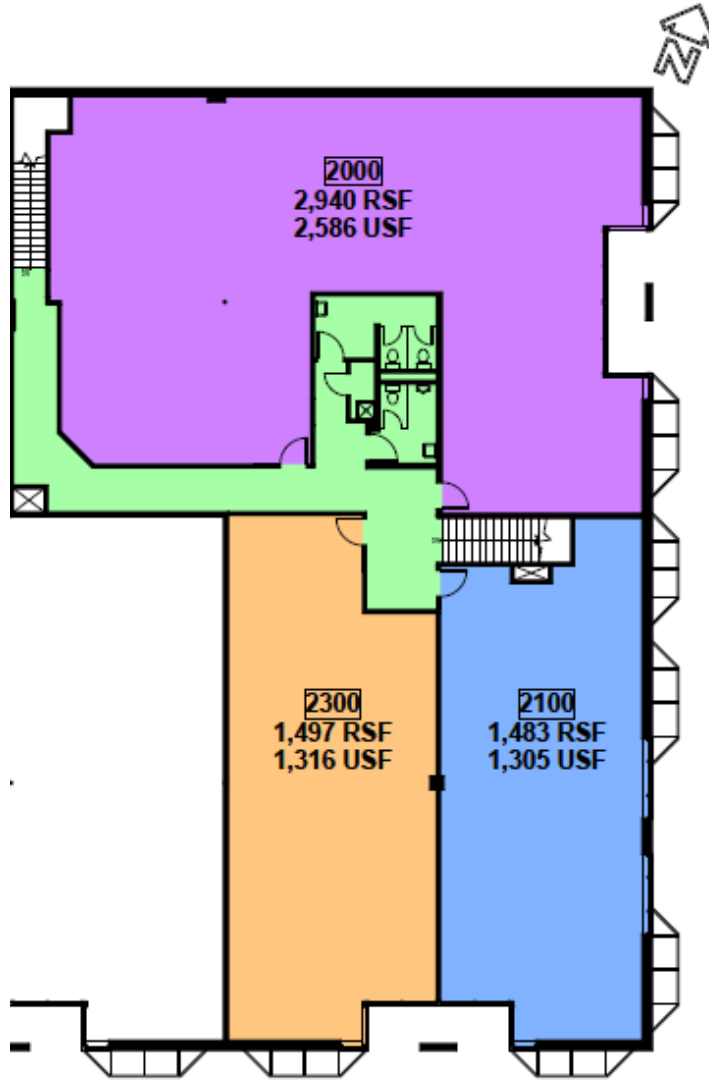
# FLOOR PLAN



## 3710 WOODLAND DRIVE Second Floor

Suite 2100 1,483 - 6,365 sq. ft. \$.90 psf

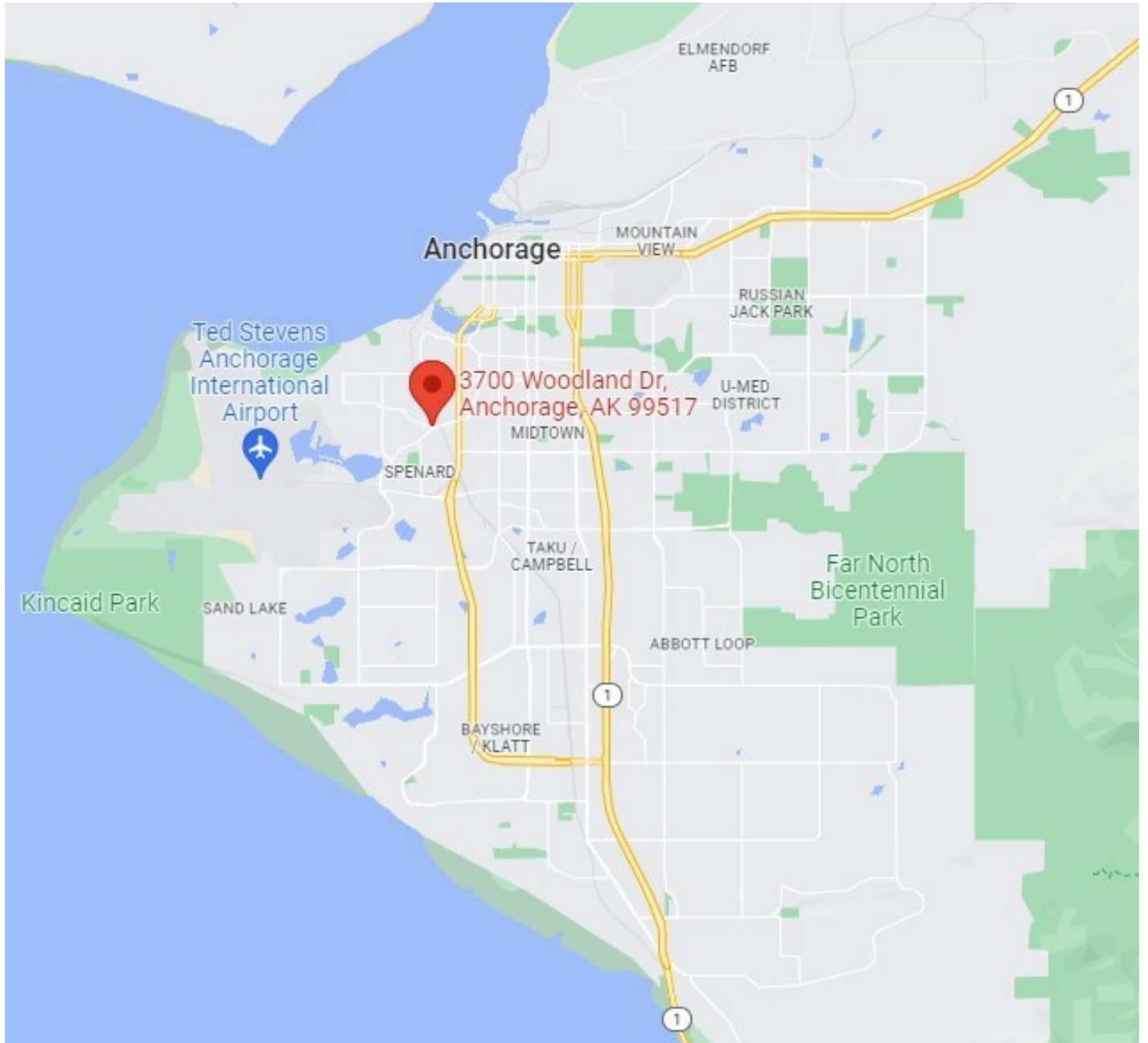
# FLOOR PLAN



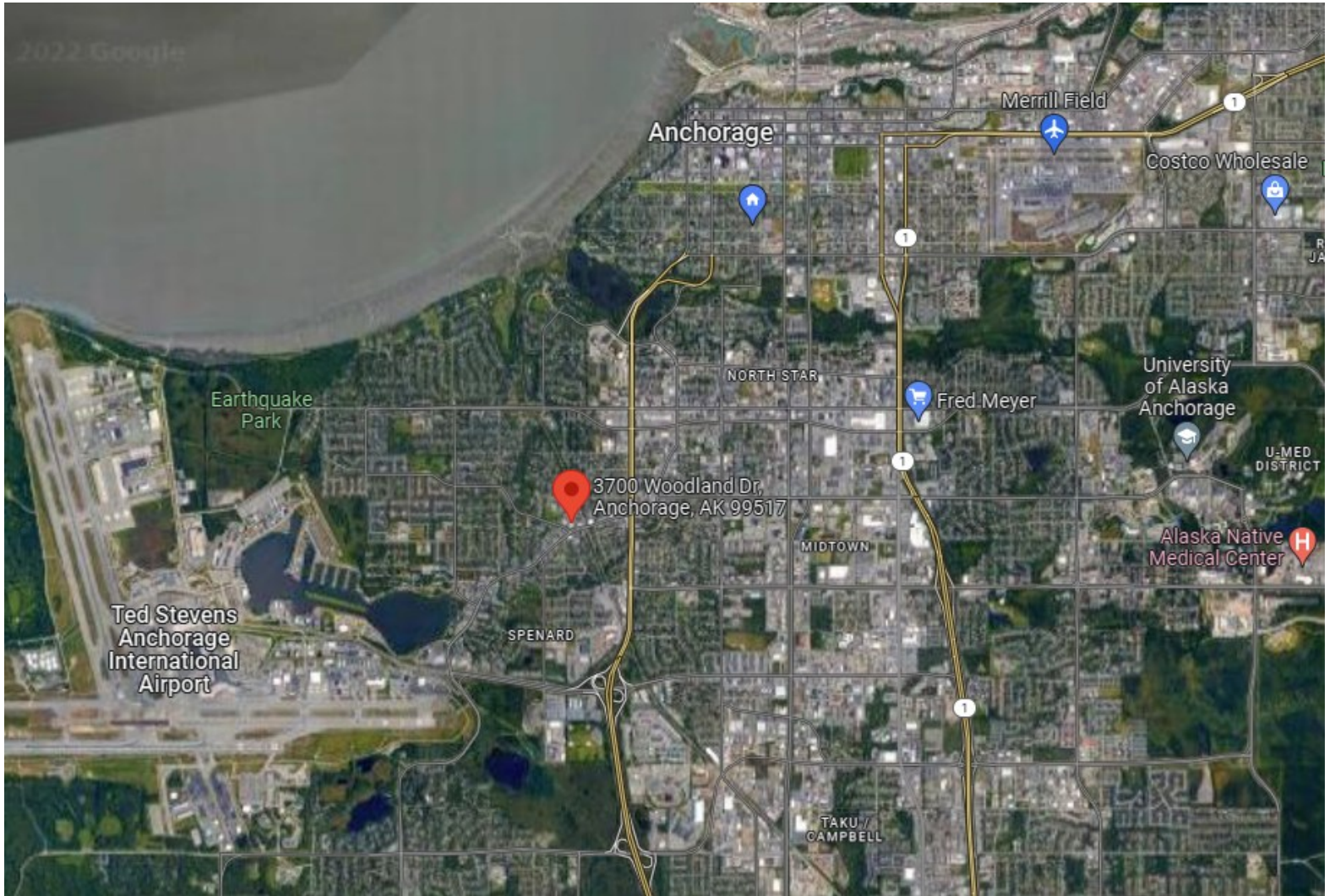
---

## 3710 WOODLAND DRIVE Suite 2100 Potential Layout

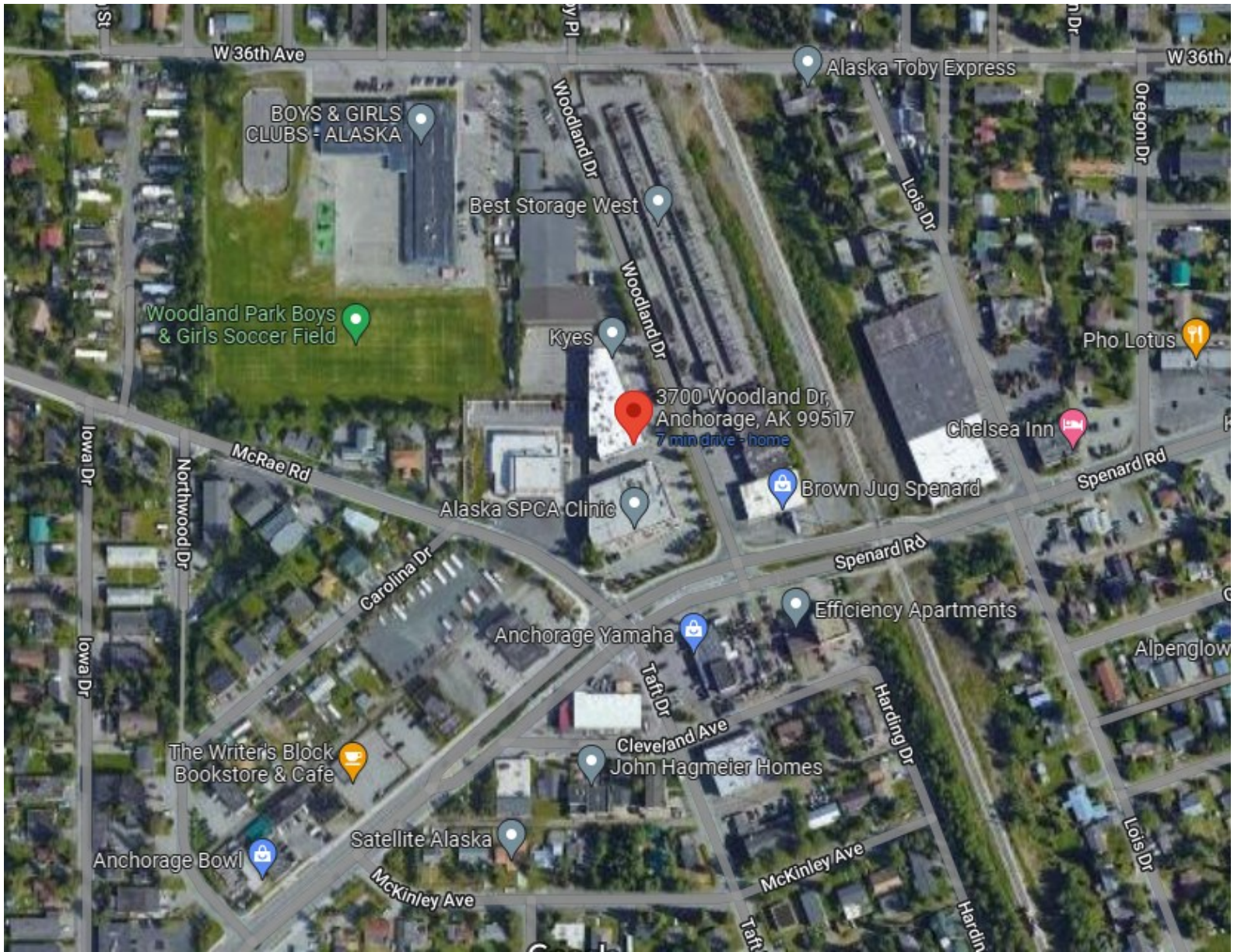
# AERIAL PHOTO



# AERIAL PHOTO



# AERIAL PHOTO







**Real Estate Commission**

550 West 7<sup>th</sup> Avenue, Suite 1500, Anchorage, AK 99501

Phone: (907) 269-8160

Email: [RealEstateCommission@Alaska.Gov](mailto:RealEstateCommission@Alaska.Gov)

Website: [ProfessionalLicense.Alaska.Gov/RealEstateCommission](http://ProfessionalLicense.Alaska.Gov/RealEstateCommission)

## Alaska Real Estate Commission Consumer Disclosure

**This is not a contract.** This disclosure, as required by law, outlines the obligations of the Licensee to the Consumer and does not obligate the Consumer to the Licensee. This disclosure outlines the duties of the types of Licensee relationships identified by Alaska State law. (AS 08.88.600 - 08.88.695). The Consumer understands that they will be working with the Licensee under the relationship initialed below:

Specific Assistance	Representation
<p>The Consumer is receiving Specific Assistance without Representation. The Licensee does not represent the Consumer. Rather, the Licensee is simply responding to requests for information, and the Licensee may "Represent" another party in the transaction while providing you with Specific Assistance. Unless you and the Licensee agree otherwise, information you provide the Licensee is not confidential. Duties owed to the Consumer by the Licensee include:</p> <ul style="list-style-type: none"> <li>a. Exercise of reasonable skill and care;</li> <li>b. Honest and good faith dealing;</li> <li>c. Timely presentation of all written communications;</li> <li>d. Disclosing all material information known by the Licensee regarding the physical condition of a property; and</li> <li>e. Timely accounting of all money and property received by the Licensee.</li> </ul>	<p>The Licensee represents only the Consumer(s) listed in this disclosure unless otherwise agreed to in writing by all Consumers in a transaction. Duties owed to the Consumer by the Licensee include:</p> <ul style="list-style-type: none"> <li>a. All duties owed by the Licensee providing Specific Assistance;</li> <li>b. Not intentionally taking actions which are adverse or detrimental to the Consumer;</li> <li>c. Timely disclosure of conflicts of interest to the Consumer;</li> <li>d. Advising the Consumer to seek independent expert advice if a matter is outside the expertise of the Licensee;</li> <li>e. Not disclosing confidential information during or after representation without written consent of the Consumer unless required by law; and</li> <li>f. Making a good faith and continuous effort.</li> </ul>
<p>Consumer Initials: _____ / _____ Date: _____</p>	<p>Consumer Initials: _____ / _____ Date: _____</p>
Neutral Licensee	
<p>Alaska Law allows for a Licensee to assist the Seller/Lessor AND the Buyer/Lessee in a real estate transaction. It is understood that a Neutral Licensee is NOT Representing either party and duties are limited. Duties owed to the Consumer by a Neutral Licensee include:</p> <ul style="list-style-type: none"> <li>a. All duties owed by the Licensee providing Specific Assistance;</li> <li>b. Duties a, b, c, d, and e, owed by the Licensee providing Representation; and</li> <li>c. Not disclosing the terms or the amount of money the Consumer is willing to pay or accept for a property if different than what the Consumer has offered or accepted for a property.</li> </ul>	
<p>Consumer Initials: _____ / _____ Date: _____ <b>(Must attach Waiver of Right to be Represented)</b></p>	
Duties Not Owed by Licensee	
<p>AS 08.88.630 - <b>Duties not owed by licensee.</b> Unless agreed otherwise, a real estate licensee does not owe a duty to a person with whom the licensee has established a licensee relationship to</p> <ul style="list-style-type: none"> <li>(1) conduct an independent inspection of the real estate that is the subject of the licensee relationship;</li> <li>(2) conduct an independent investigation of a person's financial condition; or</li> <li>(3) independently verify the accuracy or completeness of a statement made by a party to a real estate transaction or by a person reasonably believed by the licensee to be reliable.</li> </ul>	

Acknowledgement: The below Consumer has read the information provided in the Alaska Real Estate Disclosure and understands the different types of relationships available by an Alaska Real Estate Licensee. For full description of Licensee Relationships refer to AS 08.88.600 - 08.88.695.

<b>Brokerage Name:</b>	Frampton & Opinsky, LLC				
<b>Licensee Name:</b>	Erik Frampton	<b>Signature:</b>	<i>Erik Frampton</i>	<b>Date:</b>	9/25/24
<b>Consumer Name:</b>		<b>Signature:</b>		<b>Date:</b>	
<b>Consumer Name:</b>		<b>Signature:</b>		<b>Date:</b>	

An addendum IS x IS NOT attached. If more than one Licensee is involved, a Consumer Disclosure Addendum shall be attached naming all Licensees and specifying the relationship.

- THIS CONSUMER DISCLOSURE IS NOT A CONTRACT -