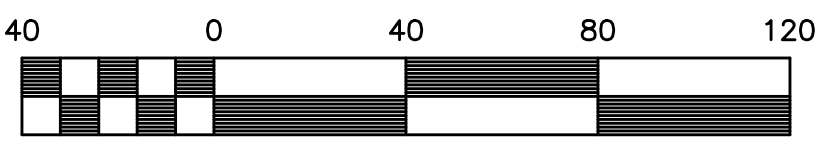
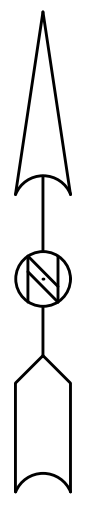


PLAT OF SURVEY

TAX ID NUMBER (P.I.N.):
12-02-31-480-032-0000
ADDRESS:
W. NORTH CARILLON DRIVE
ROMEVILLE, ILLINOIS 60446

LEGAL DESCRIPTION

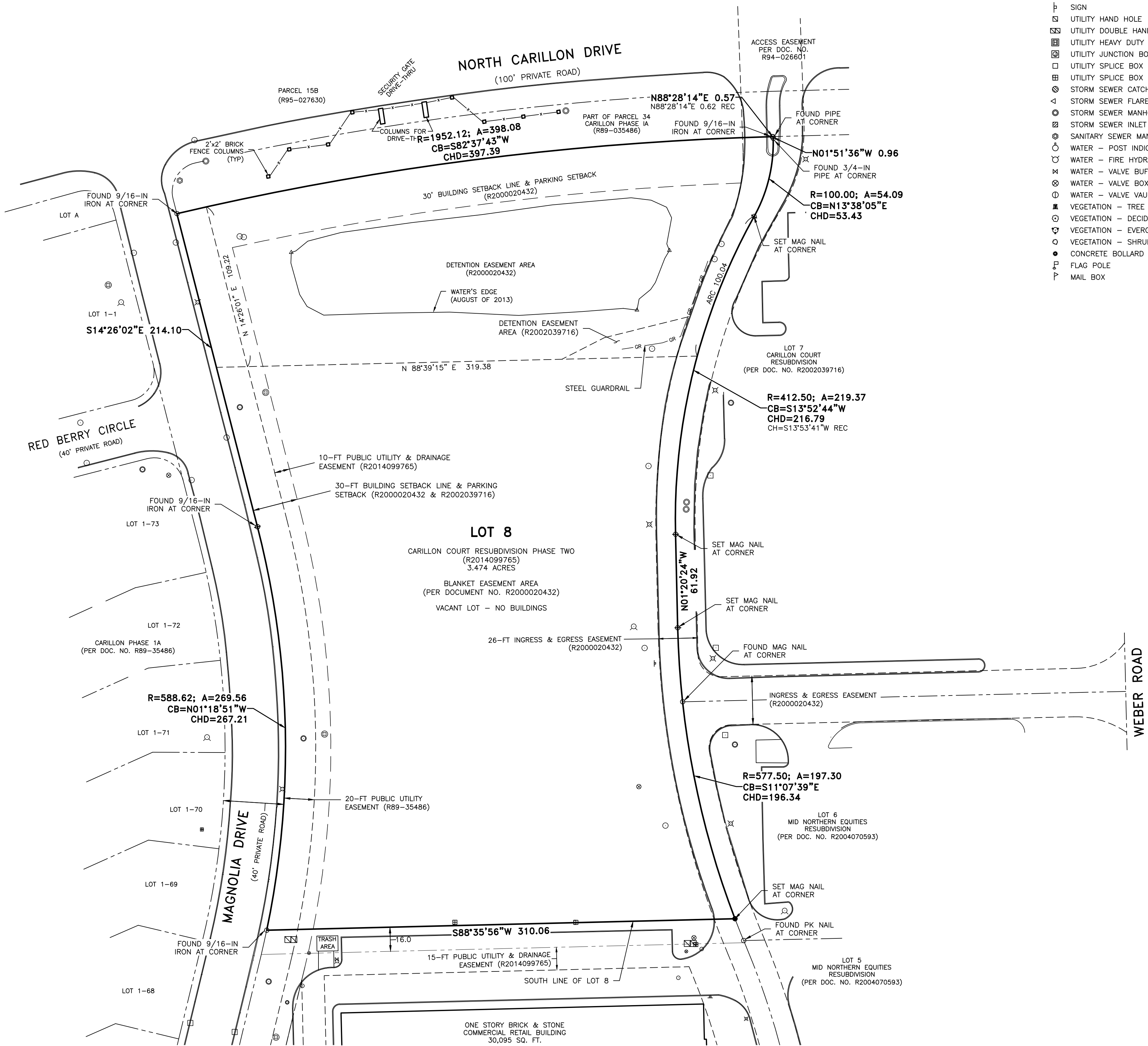
LOT 8 IN FINAL PLAT OF CARILLON COURT RESUBDIVISION PHASE TWO, BEING A RESUBDIVISION OF PART OF THE SOUTHEAST QUARTER OF SECTION 31, TOWNSHIP 37 NORTH, RANGE 10 EAST OF THE THIRD PRINCIPAL MERIDIAN, AND PART OF THE NORTHEAST QUARTER OF SECTION 6, TOWNSHIP 36 NORTH, RANGE 10 EAST OF THE THIRD PRINCIPAL MERIDIAN, ACCORDING TO THE PLAT THEREOF RECORDED NOVEMBER 12, 2014 AS DOCUMENT R2014099765, IN WILL COUNTY, ILLINOIS. Containing 3.474 acres more or less.



Scale: 1" = 40'

EXISTING SYMBOLS LEGEND

- FOUND SURVEY MONUMENT
- ⊗ SURVEY MONUMENT - R.O.W. MARKER
- ⊕ TRAFFIC SIGNAL
- TRAFFIC SIGNAL - MAST ARM
- ⊞ UTILITY CONTROL CABINET
- ← UTILITY POLE GUY WIRE
- ⊘ UTILITY POLE
- ⊗ STREET LIGHT
- ⊠ SIGN
- ⊞ UTILITY HAND HOLE
- ⊞ UTILITY DOUBLE HAND HOLE
- ⊞ UTILITY HEAVY DUTY HAND HOLE
- ⊞ UTILITY JUNCTION BOX
- ⊞ UTILITY SPLICE BOX - GENERAL
- ⊞ UTILITY SPLICE BOX - TELEPHONE
- ⊞ STORM SEWER CATCH BASIN
- ⊞ STORM SEWER FLARED END SECTION (FES)
- ⊞ STORM SEWER MANHOLE
- ⊞ STORM SEWER INLET
- ⊞ SANITARY SEWER MANHOLE
- ⊞ WATER - POST INDICATOR VALVE (PIV)
- ⊞ WATER - FIRE HYDRANT
- ⊞ WATER - VALVE BUFFALO BOX
- ⊞ WATER - VALVE BOX
- ⊞ WATER - VALVE VAULT
- ⊞ VEGETATION - TREE STUMP
- ⊞ VEGETATION - DECIDUOUS TREE
- ⊞ VEGETATION - EVERGREEN TREE
- ⊞ VEGETATION - SHRUB/HEDGEROW
- CONCRETE BOLLARD
- ⊠ FLAG POLE
- ⊠ MAIL BOX



NOTES:

- THIS PROFESSIONAL SERVICE CONFORMS TO THE CURRENT ILLINOIS MINIMUM STANDARDS FOR A BOUNDARY SURVEY.
- GEOTECH INCORPORATED IS PROFESSIONAL DESIGN FIRM NUMBER 184-000165.
- FOR A SURVEY TO BE CONSIDERED TO BE AN ORIGINAL IT MUST BE SIGNED AND HAVE EITHER AN EMBOSSED SEAL OR A RUBBER STAMP SEAL IN THE COLOR RED OF AN ILLINOIS PROFESSIONAL LAND SURVEYOR.
- UNLESS OTHERWISE NOTED, ALL DIMENSIONS ARE IN FEET AND DECIMAL PARTS THEREOF.
- UNLESS OTHERWISE NOTED ON THE DRAWING, ALL PROPERTY CORNERS SET ARE 9/16-IN X 30-IN GALVANIZED IRON STEEL RODS.
- NO COMMITMENT FOR TITLE INSURANCE WAS PROVIDED FOR USE IN THE PREPARATION OF THIS PLAT AND SURVEY. ALL EASEMENTS SHOWN WERE TAKEN FROM PREVIOUSLY RECORDED PLATS OF SUBDIVISION FOR THIS AREA.
- THE BASIS OF BEARING FOR THE PLAT AND SURVEY, SHOWN HEREON, IS BASED UPON THE RECORDED FINAL PLAT OF CARILLON COURT RESUBDIVISION PHASE TWO, RECORDED AS DOCUMENT NUMBER R2014099765.
- THE AREA OF THE SURVEYED PARCEL IS 3.474 ACRES.
- THE SURVEYED PARCEL WAS VACANT WITHOUT ANY EXISTING BUILDINGS.
- THE USE OF "REC" DENOTES A RECORD DIMENSION OR BEARING AS SHOWN ON THE FINAL PLAT OF CARILLON COURT RESUBDIVISION PHASE TWO (R2014099765).

STATE OF ILLINOIS)
COUNTY OF WILL)SS

I, CHRISTOPHER M. PAPESH, A PROFESSIONAL LAND SURVEYOR IN THE STATE OF ILLINOIS, DO HEREBY CERTIFY THAT I HAVE SURVEYED, STAKED, AND LOCATED THE IMPROVEMENTS ON, AND PLATED THE LAND DESCRIBED IN THE FOREGOING CAPTION AND SHOWN ON THIS PLAT, AND THAT THIS PLAT IS A CORRECT REPRESENTATION THEREOF, DATED AT CREST HILL, ILLINOIS THIS

10th DAY OF August 2023, A.D.

Christopher M. Papesh

ILLINOIS PROFESSIONAL LAND SURVEYOR NO. 3369
LICENSE EXPIRATION DATE: 11/30/2024
cpapesh@geotechincorp.com

