

FOR SALE

2050 Claire Court, Glenview, IL

Features

| | |
|--------------------|--|
| Building size: | 45,000 sf 2 Story HQ Office Building 24,000 sf 3 Story Medical Office Building (plus 10,000 sf completed basement) |
| Site size: | 4.24 acres |
| Parking: | 180 car parks |
| Power: | 2-1200 amps 120/208 3-Phase |
| Mechanical: | Package Trane Rooftop Units |
| Loading: | 2 Grade Level Docks |
| Year Built: | 2006/2012 |
| Current Zoning: | Underlying I-2 Light Industrial |
| Demos: | Glenview |
| Population: | 45,884 |
| MHI: | \$140,985 |
| AHI: | \$200,162 |
| Taxes: | \$6 psf |
| Sale Price: | \$3,500,000 |

For more information
or to arrange for an inspection,
please contact:

Dan Tobin, SIOR
CTK Chicago Partners
847-699-2162 (direct)
dtobin@ctkcp.com

Geoff Dowling
CTK Chicago Partners
847-699-2158 (direct)
gdowling@ctkcp.com

Property Aerial



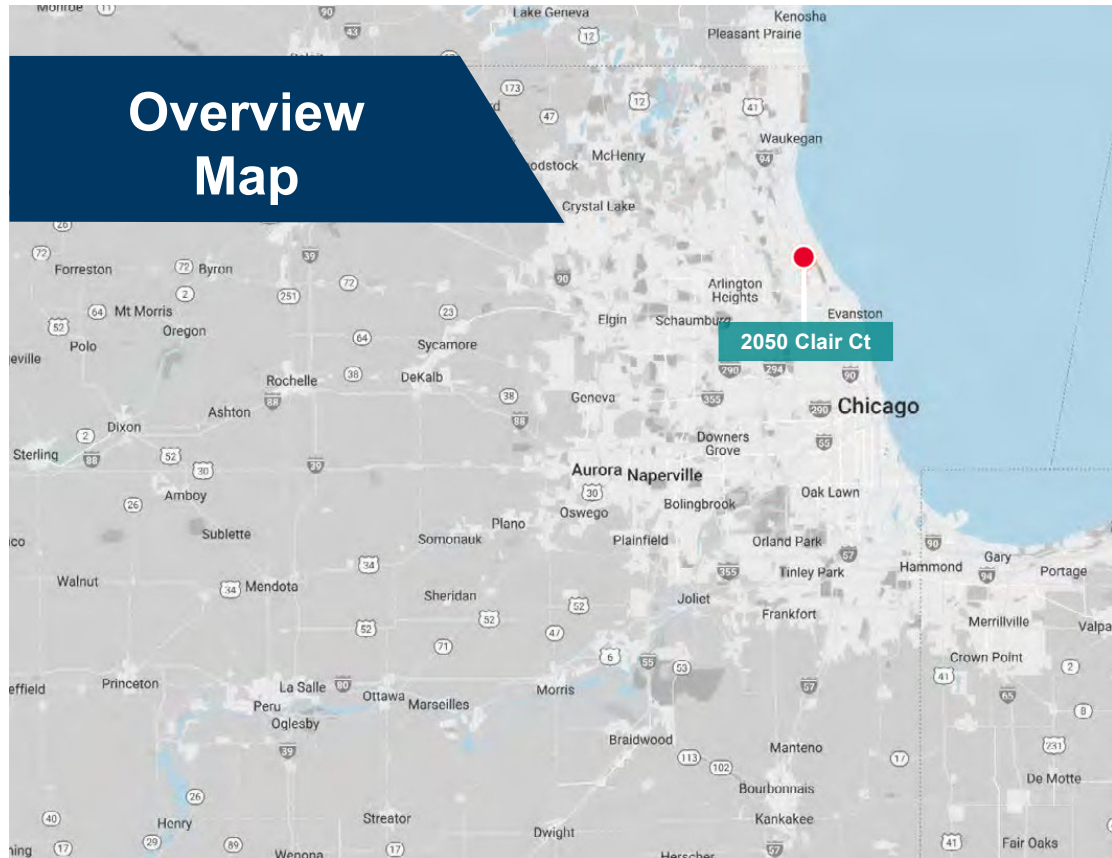
Submitted subject to error, change in status or withdrawal without notice. Not to scale.



FOR SALE

2050 Claire Court, Glenview, IL

Overview Map



Property Location



For more information
or to arrange for an inspection,
please contact:

Dan Tobin, SIOR
CTK Chicago Partners
847-699-2162 (direct)
dtobin@ctkcp.com

Geoff Dowling
CTK Chicago Partners
847-699-2158 (direct)
gdowling@ctkcp.com

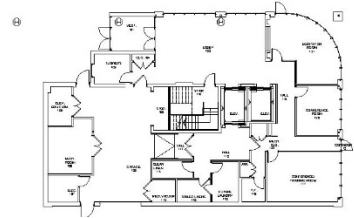
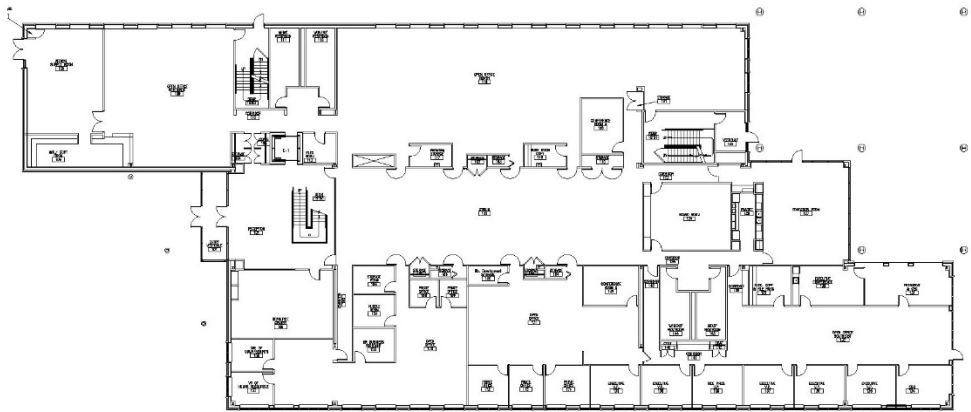
FOR SALE

2050 Claire Court, Glenview, IL

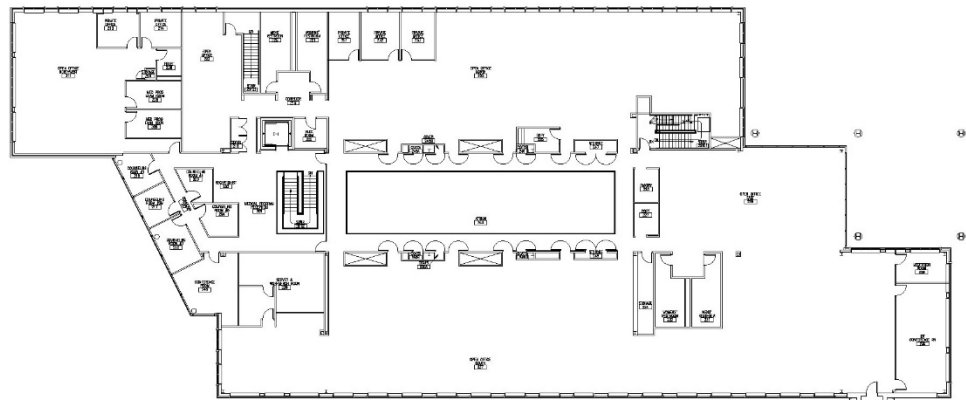
For more information
or to arrange for an inspection,
please contact:

Dan Tobin, SIOR
CTK Chicago Partners
847-699-2162 (direct)
dtobin@ctkcp.com

Geoff Dowling
CTK Chicago Partners
847-699-2158 (direct)
gdowling@ctkcp.com



First Floor



Second Floor