

AVAILABLE FOR LEASE
OFFICE SPACE

312 W. SEVENTH STREET

FAST PLAZA | HANFORD, CA



NEWMARK
PEARSON COMMERCIAL

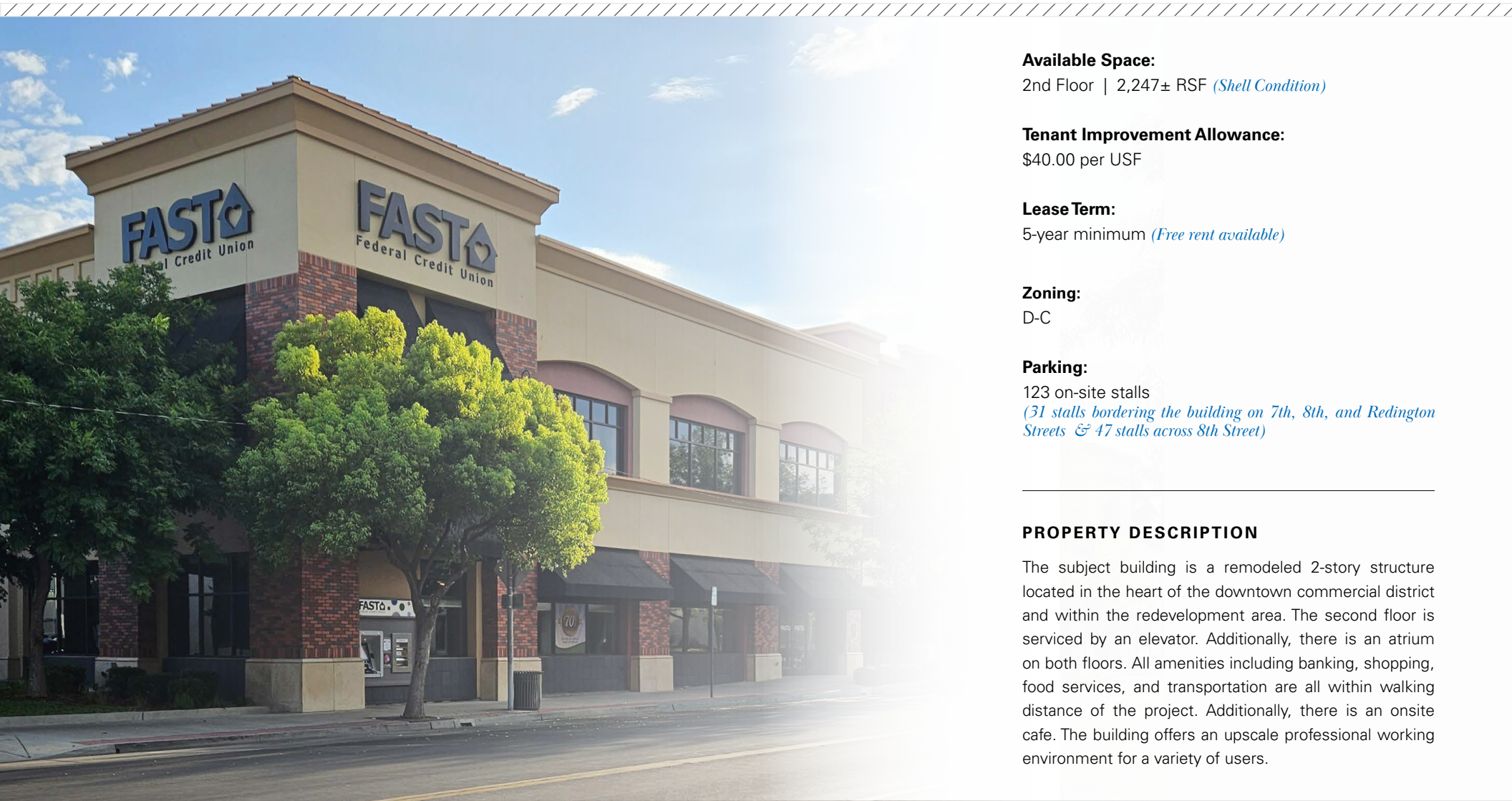
Phil Souza
Senior Vice President - Office Division
t 559-447-6283
psouza@pearsonrealty.com
CA RE Lic. #00853867

Independently Owned and Operated | Corporate License #00020875 | newmarkpearson.com

FRESNO OFFICE: 7480 N. Palm Ave. #101, Fresno, CA 93711, t 559-432-6200 | **VISALIA OFFICE:** 3447 S. Demaree St., Visalia, CA 93277, t 559-732-7300
The distributor of this communication is performing acts for which a real estate license is required. The information contained herein has been obtained from sources deemed reliable but has not been verified and no guarantee, warranty or representation, either express or implied, is made with respect to such information. Terms of sale or lease and availability are subject to change or withdrawal without notice.

312 W. SEVENTH STREET
HANFORD, CA

PROPERTY
INFORMATION



Available Space:

2nd Floor | 2,247± RSF (*Shell Condition*)

Tenant Improvement Allowance:

\$40.00 per USF

Lease Term:

5-year minimum (*Free rent available*)

Zoning:

D-C

Parking:

123 on-site stalls

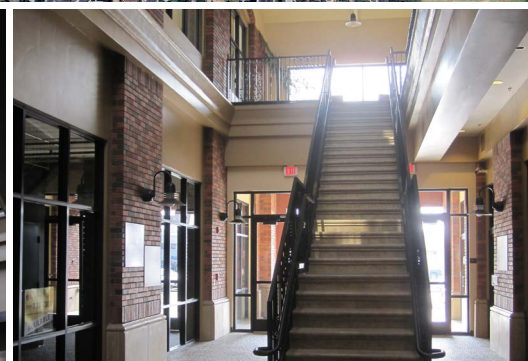
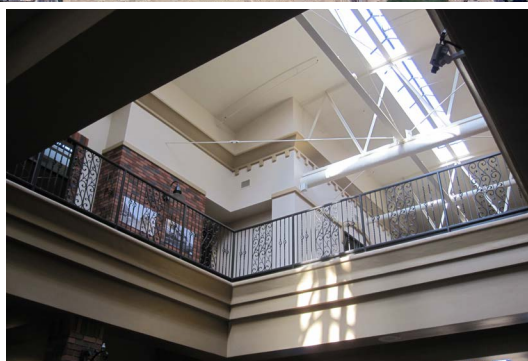
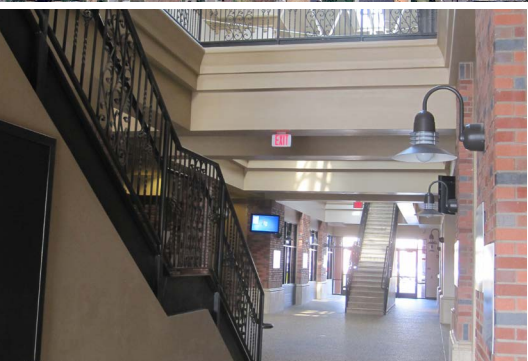
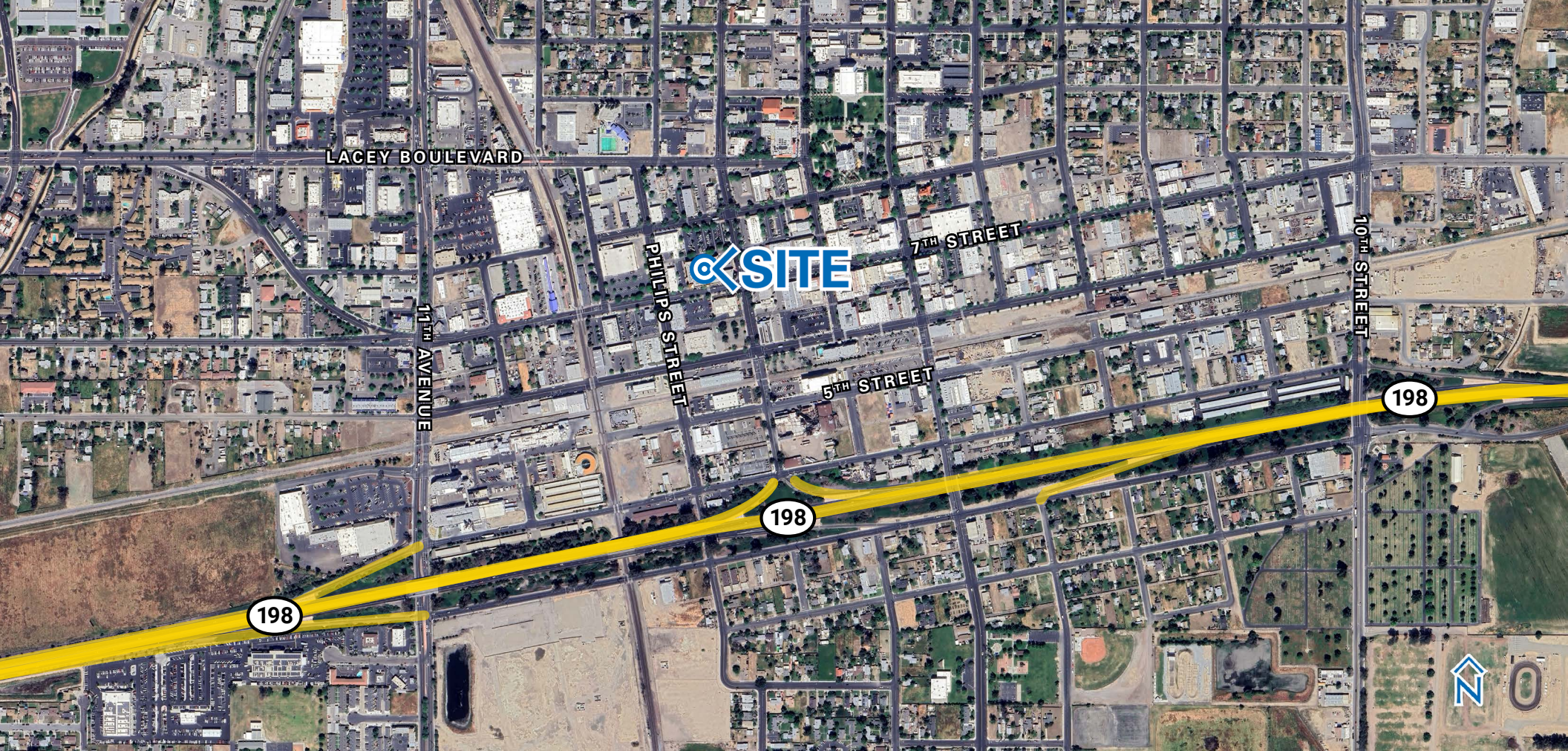
(31 stalls bordering the building on 7th, 8th, and Redington Streets & 47 stalls across 8th Street)

PROPERTY DESCRIPTION

The subject building is a remodeled 2-story structure located in the heart of the downtown commercial district and within the redevelopment area. The second floor is serviced by an elevator. Additionally, there is an atrium on both floors. All amenities including banking, shopping, food services, and transportation are all within walking distance of the project. Additionally, there is an onsite cafe. The building offers an upscale professional working environment for a variety of users.

\$1.55 RSF/Monthly
LEASE RATE

NNN
LEASE TYPE



NEWMARK
PEARSON COMMERCIAL

Phil Souza
Senior Vice President - Office Division
t 559-447-6283
psouza@pearsonrealty.com
CA RE Lic. #00853867

Independently Owned and Operated | Corporate License #00020875 | newmarkpearson.com
FRESNO OFFICE: 7480 N. Palm Ave. #101, Fresno, CA 93711, t 559-432-6200 | **VISALIA OFFICE:** 3447 S. Demaree St., Visalia, CA 93277, t 559-732-7300
The distributor of this communication is performing acts for which a real estate license is required. The information contained herein has been obtained from sources deemed reliable but has not been verified and no guarantee, warranty or representation, either express or implied, is made with respect to such information. Terms of sale or lease and availability are subject to change or withdrawal without notice.