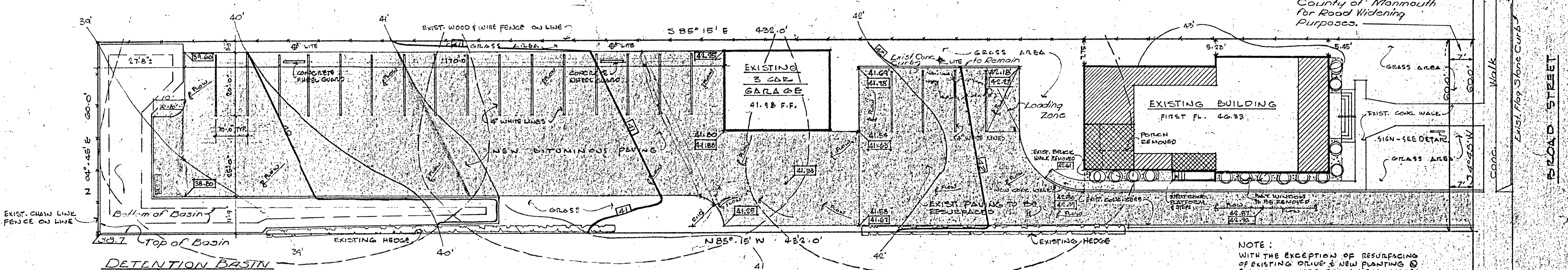


- LEGEND**
- EXISTING CONTOUR LINE
 - EXISTING ELEVATION
 - NEW ELEVATION
 - DIRECTION OF SURFACE WATER RUN-OFF
 - NEW 2 STORY ADDITION
 - NEW ADDITION @ 2ND FLOOR 1ST FLOOR EXISTING
 - NEW CONC. WALK
 - EXISTING BITUMINOUS PAVING RESURFACED WITH 1" BASE
 - NEW BITUMINOUS PAVING 2" F.A.B.C. OVER 2 1/2" PLANT-MIX STABILIZED BASE OR 4" CRUSHED STONE
 - NEW PLANTING JUNIPERUS CHINENSIS PFTZERIANA (PFTZER'S JUNIPER) CONTROLLED HEIGHT 1' 3" SPACING 1' 5" 0" SET IN ROCK CHIPS
 - POST LIGHT (SEE DETAIL THIS SHEET)



PROJECT DATA

1. ZONE: PROFESSIONAL P-1
2. LOT AREA: 25,920 S.F.
3. BUILDING AREA: MAIN BUILDING: 2639 S.F.
GARAGE: 582
TOTAL: 3521 S.F.
4. LOT COVERAGE: 13.6%
5. FLOOR AREA: 1ST FLOOR: 2639 S.F.
2ND FLOOR: 2639 S.F.
TOTAL: 5278 S.F.
6. LANDSCAPED AREA: 2893 S.F. OR 34.3%
7. PARKING REQ: 1 SPACE/300 S.F. = 18 SPACES
8. PARKING PROVIDED: 24 SPACES (7 Loading Zone)
9. ALL UTILITIES ARE EXISTING & TO REMAIN
10. CURB SIDE MUNICIPAL REFUSE COLLECTION

PLOT PLAN
SCALE: 1/4" = 1'-0"
SITE DATA FROM A SURVEY PREPARED BY THE BIRDSALL CORP., SOUTH BELMAR, N.J., DATED 8-13-77
LOT: 16 BLOCK: 99

LIGHTING NOTE
0.5 F.C. Isolux Line

Note:
Detention Basin and Proposed Grading Prepared by the Birdsall Corp, Remainder by Others.

Chg. Let.	Description	Date	Plot.	Ckd.
REVISIONS				
Title: DETENTION BASIN AND PROPOSED GRADING PLAN				
Lot 16 Block 99 IN THE BOROUGH OF RED BANK MONMOUTH CO., N.J.				
THE BIRDSALL CORPORATION, SOUTH BELMAR, N.J. Professional Engineers, Land Surveyors, & Professional Planners				
		Date: 9-26-77	Plot. <i>APH</i>	Ckd. <i>APH</i>
		Scale: 1/4" = 1'-0"	Desig. <i>EH, APH</i>	Ckd. <i>APH</i>
Job No. 212	Scale: 1/4" = 1'-0"		Sheet 1 of 2	

PROPOSED OFFICE BUILDING RENOVATION
WALTER ZIMMERER & SON
210 BROAD ST. RED BANK, N.J.

apid
Architecture/planning/interior design
12 broad street red bank, n.j. 07701/201-747-7044

ronald t. ryan, a.i.a. architect
DATE 8-24-77
COMM. NO. 77-155
REVISION: 1