

14141

Suite Size: 1,325 Square Feet
Rental Rate: \$27 PSF +Elec and Gas
Ready to see patients right away!

- Brand new 2026 finishes: move-in ready opportunity with potential for further customization.
- Flexible layout suitable for various types of medical, therapy, wellness, or professional office use.
- Four private treatment/exam rooms with an in-suite Restroom, dedicated reception and waiting area, and centrally located sink. Utility room and additional storage space as well.
- Professional office/medical community setting with easy access to major roads and surrounding amenities.
- Ample free parking for staff and visitors with first floor entry into space.



Easy access
to I-66



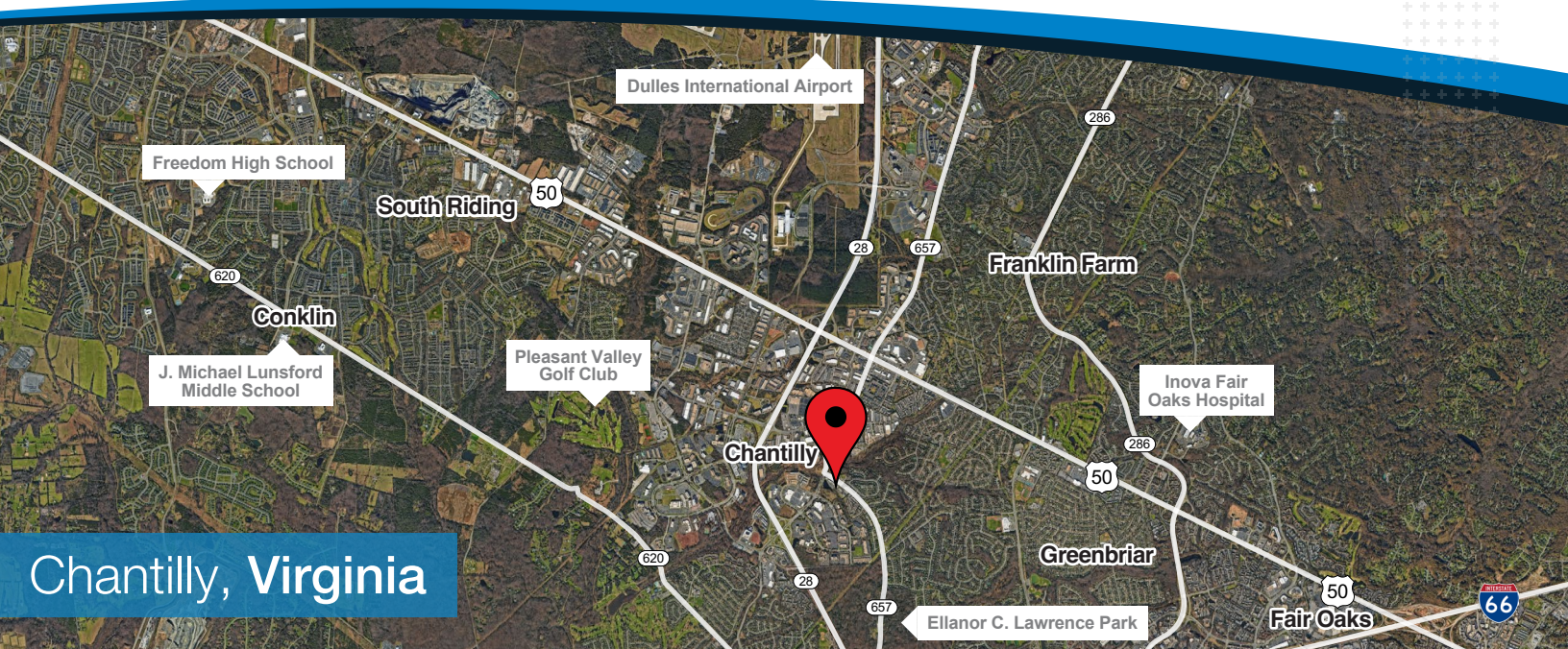
Huge Population
Growth



Densely
Populated Area

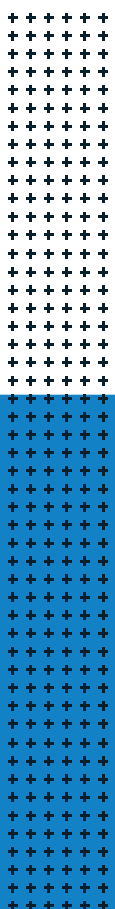
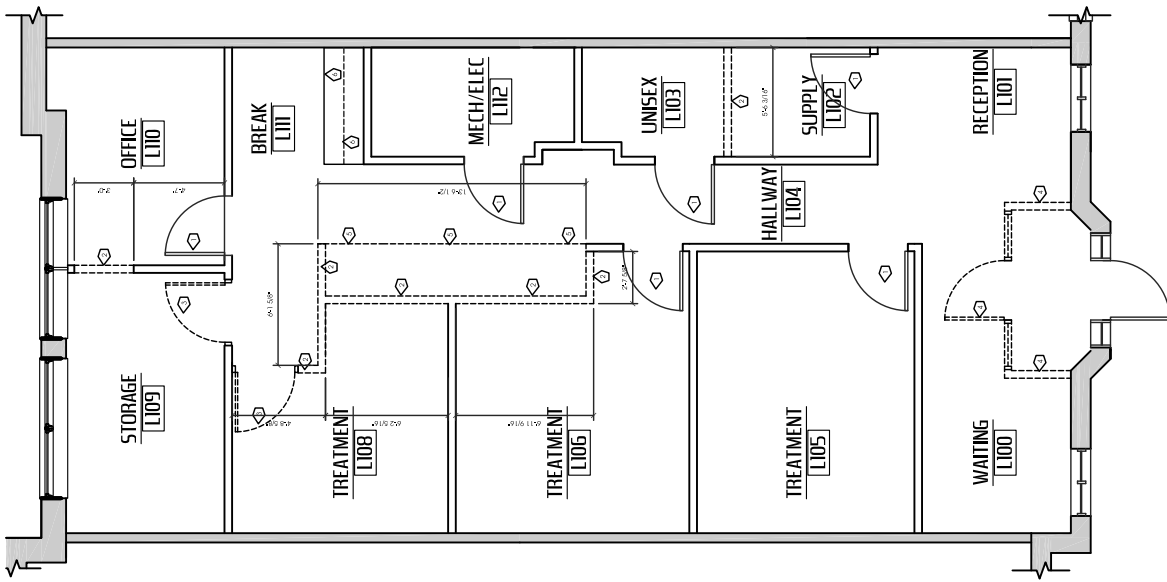


Premium
Real Estate



Chantilly, Virginia

FLOOR PLAN



For more information or to schedule a property tour, please contact:

Brandon Fell: brandonfell@hprgrealty.com | 703.470.7956

Connor Ebel: cebel@hprgrealty.com | 240-204-3391

HPRGrealty.com