

FOR SALE OR LEASE | INDUSTRIAL

Riverview Industrial Center

150 Eva Street, Saint Paul, Minnesota 55107



Riverview Industrial Center is a high-quality, centrally located industrial building located in the Riverview Industrial Park just across the Mississippi River from downtown Saint Paul. The building is primarily used for warehousing and general industrial with some office space.

Property Features

- 94,004 total square foot building
- 7 dock doors
- 2 garage spots
- 6 drive-in doors
- 14.5' - 16' clear height
- Fenced outdoor storage area available
- 3.62 acres
- Located with easy access to I-94 and Highway 52
- Locally owned and managed
- Sale price \$7,200,000
- Net Rent - negotiable
- Estimated Tax & CAM 2025 - \$2.26 psf

Contact Us

ERIC DUEHOLM

Partner



651.621.2550

eric@terracegroupllc.com

BEN BRUNO

Brokerage Services



651.621.2563

ben@terracegroupllc.com

TONY ROSSATO

Brokerage Services



651.621.2507

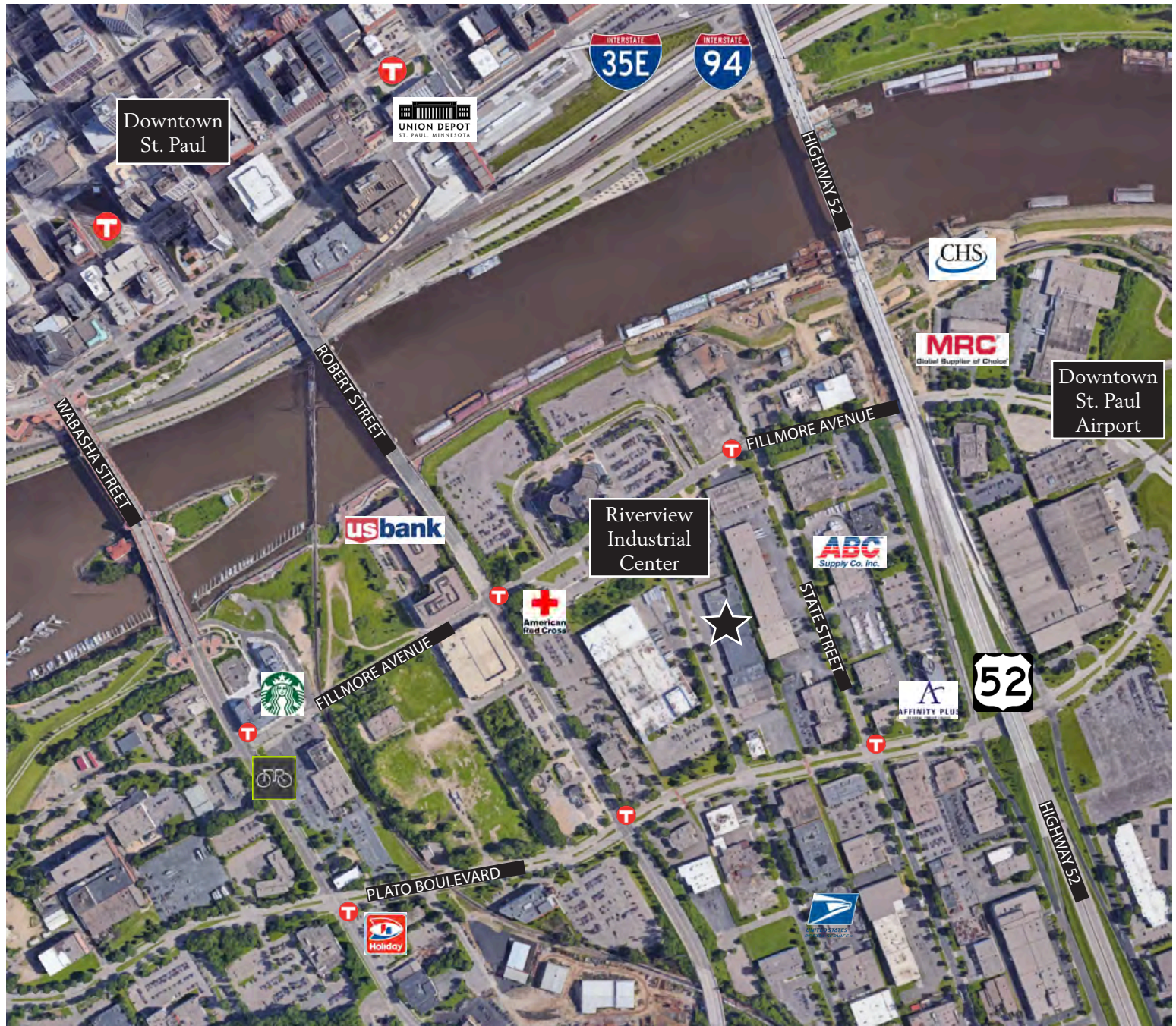
tony@terracegroupllc.com

Full Property Information at:
stpaulwarehouse.com

FOR SALE OR LEASE | INDUSTRIAL
Riverview Industrial Center
150 Eva Street, Saint Paul, Minnesota 55107



Area Map



ERIC DUEHOLM
Partner

651.621.2550
eric@terracegrouppllc.com

BEN BRUNO
Brokerage Services

651.621.2563
ben@terracegrouppllc.com

TONY ROSSATO
Brokerage Services

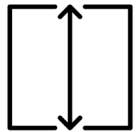
651.621.2507
tony@terracegrouppllc.com

Full Property Information at:
stpaulwarehouse.com

FOR SALE OR LEASE | INDUSTRIAL
Riverview Industrial Center
 150 Eva Street, Saint Paul, Minnesota 55107



94,004 square feet



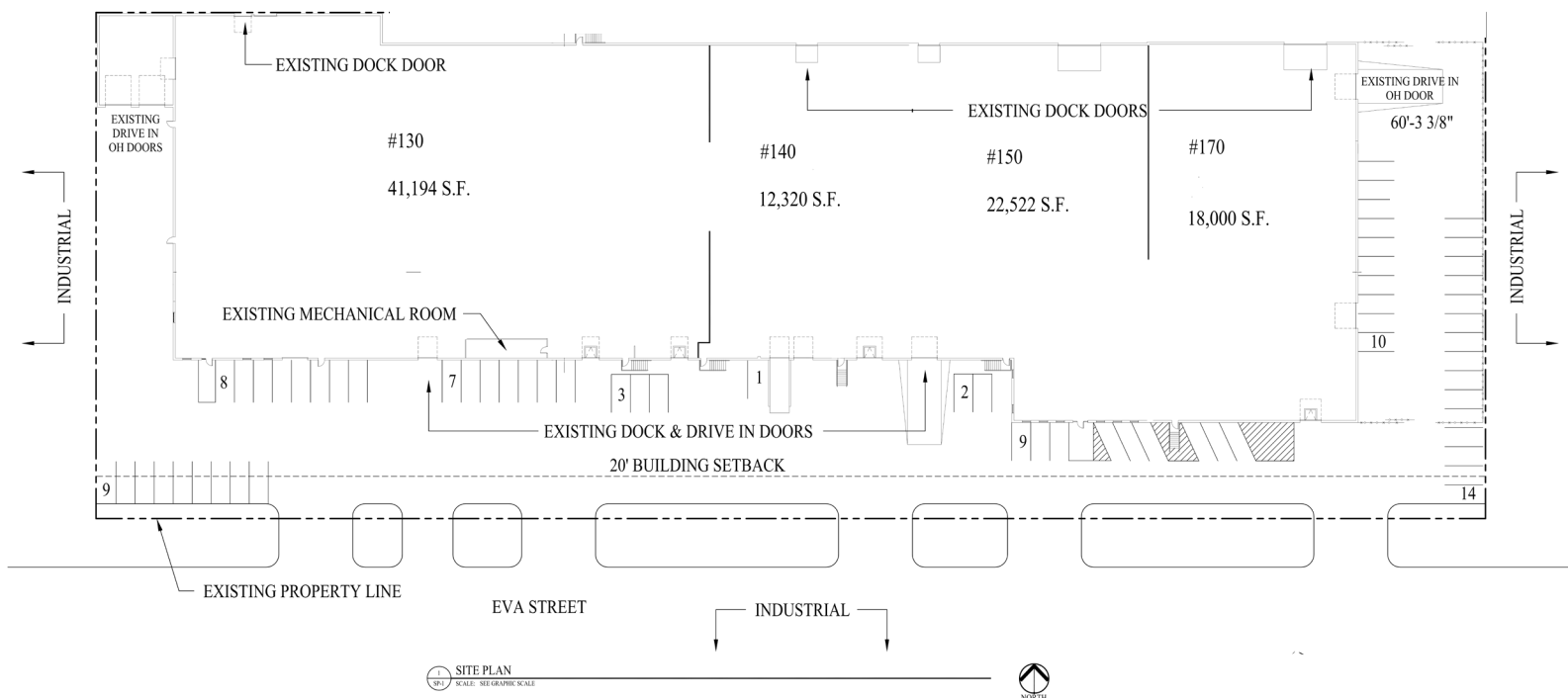
14.5' - 16' ceiling height in warehouse



7 dock doors



6 drive-in doors



RIVERVIEW INDUSTRIAL BUILDING

RIVERVIEW INDUSTRIAL BUILDING
 150 EVA STREET
 ST. PAUL, MN 55107



Divisible to 20,000 SF if leased

ERIC DUEHOLM

Partner

651.621.2550

eric@terracegrouppllc.com

BEN BRUNO

Brokerage Services

651.621.2563

ben@terracegrouppllc.com

TONY ROSSATO

Brokerage Services

651.621.2507

tony@terracegrouppllc.com

Full Property Information at:
stpaulwarehouse.com

FOR SALE OR LEASE | INDUSTRIAL
Riverview Industrial Center
150 Eva Street, Saint Paul, Minnesota 55107



#9 - 2 Story Office



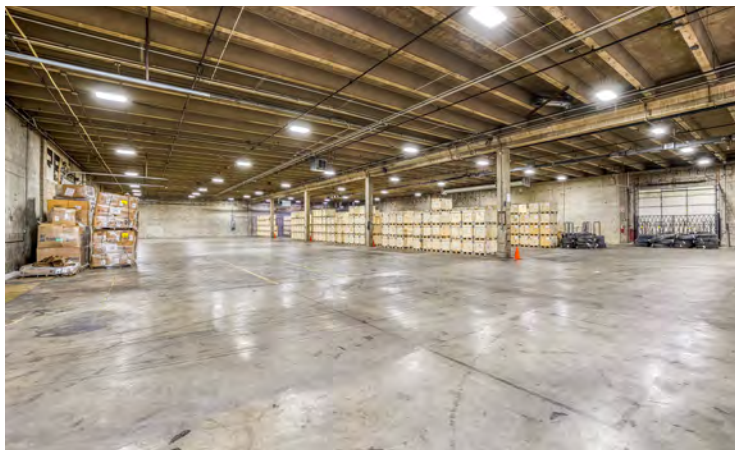
#11 - Fenced Outside Storage Area with dock and drive-in



#12 - Garage Area with 14' high drive-in doors



#6 - Main Photo



#13 - Warehouse Suite 170 looking south



#14 - Warehouse Suite 170 looking north

ERIC DUEHOLM
Partner

651.621.2550
eric@terracegrouppllc.com

BEN BRUNO
Brokerage Services

651.621.2563
ben@terracegrouppllc.com

TONY ROSSATO
Brokerage Services

651.621.2507
tony@terracegrouppllc.com

Full Property Information at:
stpaulwarehouse.com

FOR SALE OR LEASE | INDUSTRIAL
Riverview Industrial Center
150 Eva Street, Saint Paul, Minnesota 55107



#15 - Office Suite 170



#16 - 2nd Floor Offices - open area



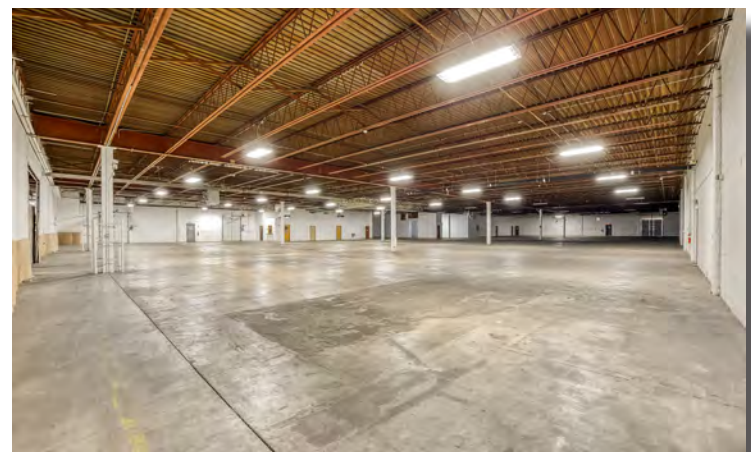
#17 - 2nd Floor Offices - private office



#19 - Warehouse Suite 140 - dock area



#20 - Warehouse Suite 140



#21 - Warehouse Suite 130

ERIC DUEHOLM
Partner

651.621.2550
eric@terracegrouppllc.com

BEN BRUNO
Brokerage Services

651.621.2563
ben@terracegrouppllc.com

TONY ROSSATO
Brokerage Services

651.621.2507
tony@terracegrouppllc.com

Full Property Information at:
stpaulwarehouse.com

FOR SALE OR LEASE | INDUSTRIAL
Riverview Industrial Center
150 Eva Street, Saint Paul, Minnesota 55107



#22 - Main Electrical and Sprinkler Room



#25 - Office Suite 130 - open area



#26 - Office Suite 130 - private office



#29 - Garage Area



#30 - Garage Area with Drive-in doors

ERIC DUEHOLM
Partner

651.621.2550
eric@terracegroupllc.com

BEN BRUNO
Brokerage Services

651.621.2563
ben@terracegroupllc.com

TONY ROSSATO
Brokerage Services

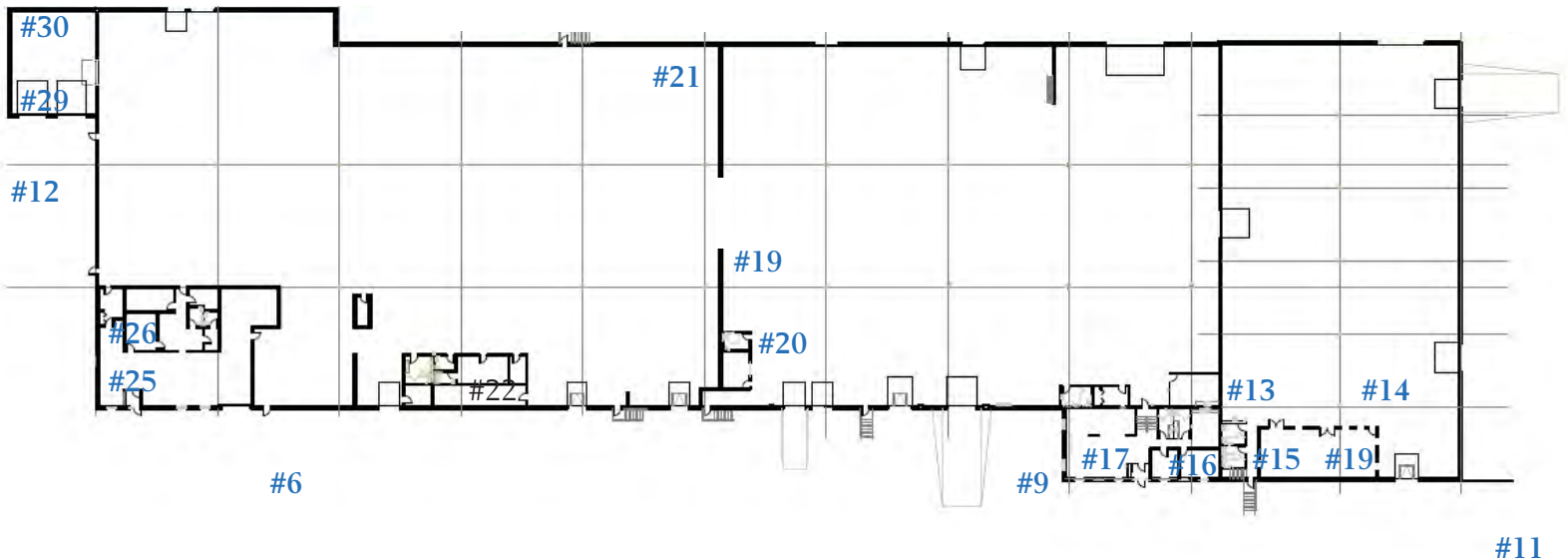
651.621.2507
tony@terracegroupllc.com

Full Property Information at:
stpaulwarehouse.com

FOR SALE OR LEASE | INDUSTRIAL
Riverview Industrial Center
150 Eva Street, Saint Paul, Minnesota 55107



Photo Key



Information is deemed reliable; however, no warranty or representation is made as to its accuracy or completeness. Property is subject to price change, prior sale or lease, and withdrawal from the market, all without notice.

ERIC DUEHOLM

Partner

651.621.2550

eric@terracegrouppllc.com

BEN BRUNO

Brokerage Services

651.621.2563

ben@terracegrouppllc.com

TONY ROSSATO

Brokerage Services

651.621.2507

tony@terracegrouppllc.com

Full Property Information at:
stpaulwarehouse.com