



FOR LEASE



811 @ THE WATERFRONT

Available Office Space: ± 1,428 SF - ± 14,844 SF

811 SW Naito Parkway, Portland, OR 97204

Now leasing office space with views of the Willamette River and Mt. Hood at 811 @ The Waterfront. This space is located within easy walking distance from Downtown Portland's plethora of shopping, dining, and entertainment choices. The TriMet Max Line is blocks away, allowing for easy access for commuters throughout the Portland Metropolitan Area.

JEFF FALCONER, SIOR
Principal

503-307-3075

jeff@capacitycommercial.com

MCCOY DOERRIE
Senior Vice President

503-523-7751

mccoy@capacitycommercial.com

GABRIEL BEHRMANN
Associate

971-420-8215

gabriel@capacitycommercial.com



PROPERTY SUMMARY



PROPERTY DETAILS

Address	811 SW Naito Parkway, Portland, OR 97204
Total SF Available	±30,311 SF
Parking	Garage and Surface Parking Available
Lease Rate	\$29.00 & \$31.00 / SF Full Service
Additional Features	<ul style="list-style-type: none">• Ideal for Creative Firms• Executive Fitness Center with Showers
Leases of 4+ years may qualify for the recently enacted Portland Business License Tax Rebate	

AVAILABILITES

Suite 220	± 2,984 SF *Combinable with Suite 250 for ±6,224 Total SF
Suite 250	± 3,240 SF *Combinable with Suite 220 for ±6,224 Total SF
Suite 300	± 5,341 SF
Suite 350	± 3,279 SF
Suite 600	± 5,593 SF
Suite 608	± 1,428 SF



PHOTO LIBRARY

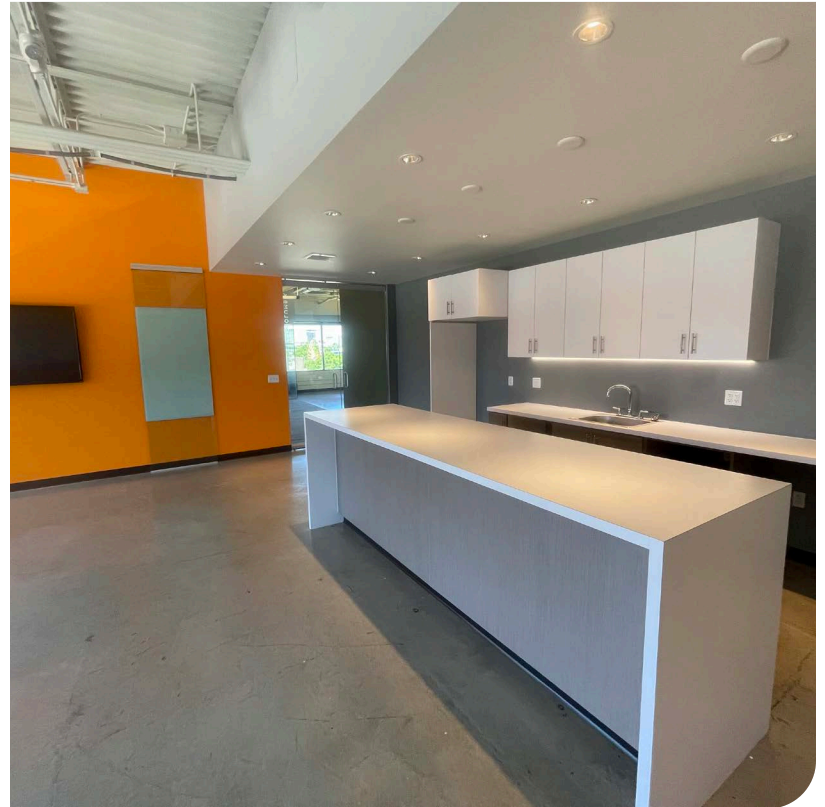




PHOTO LIBRARY





LOCAL AERIAL



Map data ©2023 Google Imagery ©2023, Airbus, CNES / Airbus, Maxar Technologies, Metro, Portland Oregon, Public Laboratory, State of Oregon, U.S. Geological Survey, USDA/FPAC/GEO