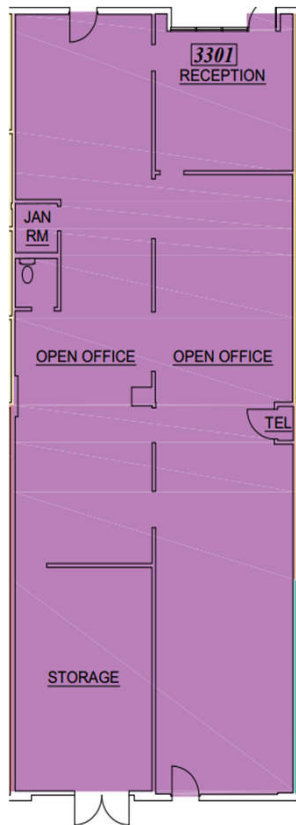


AVAILABLE FOR LEASE
2,466 SQ FT INDUSTRIAL
3301 VINCENT ROAD, PLEASANT HILL, CALIFORNIA 94523

Property Details:

- \$1.50/SF/Mo Gross ~ AS IS
- Open Office/Storage
- 1 Private Office
- One Bathroom
- Two Entrances ~ Front & Back
- Parking
- Fully Refurbished Building
- Easy Commute
- Centrally Located
- Quiet Location
- Easy Access to Hwy 680
- Near Shopping & Restaurants
- Professional Property Management



Kirk McKinney #01514824
415-254-2517 Kirk@cpi-re.com

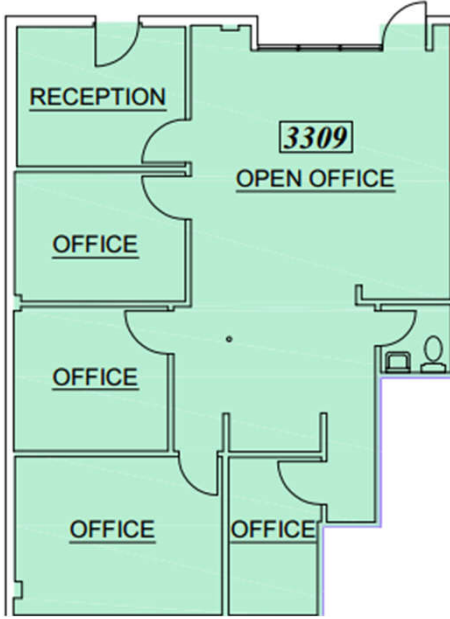
Harry Chow #01248911
510-865-8700 hchow@eclipsepm.net

AVAILABLE FOR LEASE
2,849 SQ FT INDUSTRIAL
3341 VINCENT ROAD, PLEASANT HILL, CALIFORNIA 94523

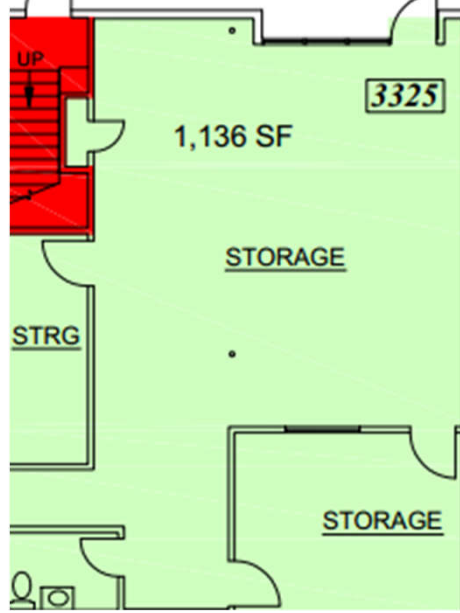


Additional Ground Floor Spaces Available

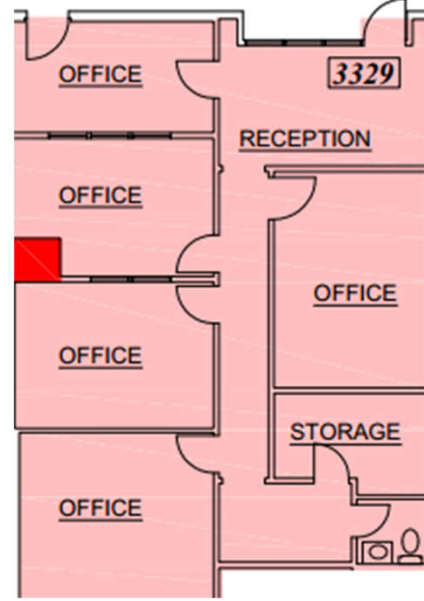
Ste 3309, 1,146 RSF



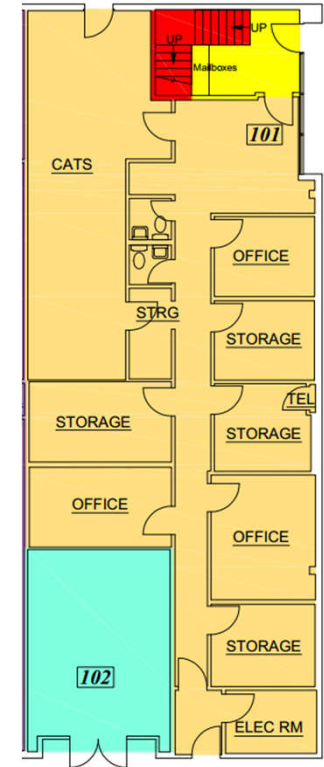
Ste 3325, 1,136 RSF



St 3329, 1,131 RSF



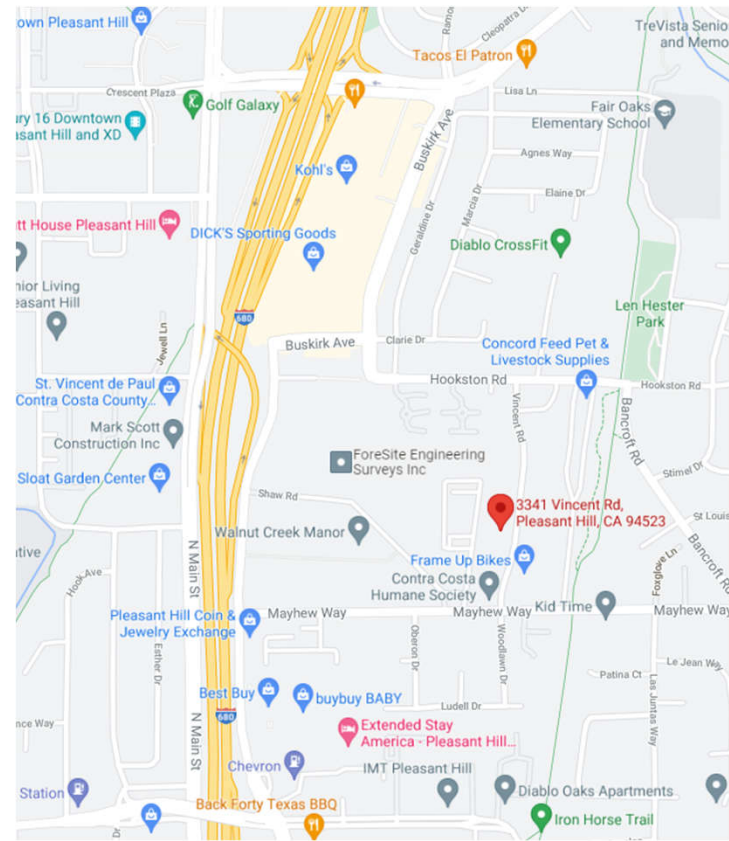
Ste 101, 2,259 RSF



Kirk McKinney #01514824
415-254-2517 Kirk@cpi-re.com

Harry Chow #01248911
510-865-8700 hchow@eclipsepm.net

AVAILABLE FOR LEASE
2,849 SQ FT INDUSTRIAL
3341 VINCENT ROAD, PLEASANT HILL, CALIFORNIA 94523



Kirk McKinney #01514824
415-254-2517 Kirk@cpi-re.com

Harry Chow #01248911
510-865-8700 hchow@eclipsepm.net