

FOR LEASE



METROPOLITAN PACIFIC
REAL ESTATE GROUP



1437 Fourth Street Santa Monica, CA

10,807 (DIVISIBLE) RSF FULL FLOOR OFFICE WITH 2 PATIOS

- Prime creative office in the heart of downtown Santa Monica
- State-of-the-art building with a restored historic façade and high ceilings
- On-site subterranean parking (~1 space/1,000 SF) with additional parking located at City structure accessed via mid-block signalized crosswalk
- 2 large decks/patios available (not included in RSF)
- Operable windows
- Modern systems and dual elevators providing direct garage access
- Can be delivered as a “vanilla shell” or built-to-suit
- 1 block to the Third Street Promenade
- 2 blocks to the Expo Light Rail station
- Available Now!
- Rental Rate: \$3.25 RSF MG

CONTACT

310 395 7300

John Warfel

DRE# 01184386

jwarfel@metpac.com

Gary Steinhardt

DRE #02151907

gsteinhardt@metpac.com

REPRESENTED BY METROPOLITAN COMMERCIAL REAL ESTATE SERVICES

Please do not disturb existing tenant. Shown by appointment only.

1437 4th St. 3rd Floor

Two large private
balconies

Operable wood
casement
windows

High ceilings

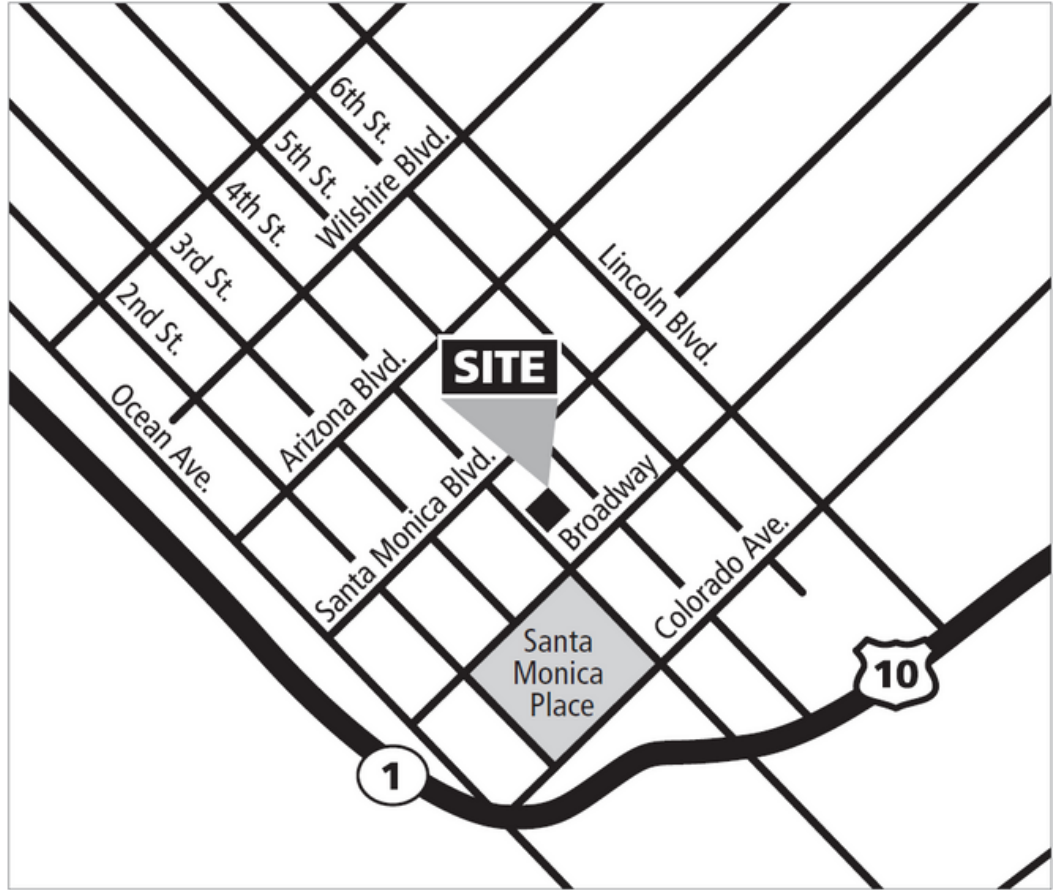
Functional
floorplate



John Warfel . jwarfel@metpac.com . Gary Steinhardt . gsteinhardt@metpac.com . 310 395 7300

REPRESENTED BY METROPOLITAN COMMERCIAL REAL ESTATE SERVICES
Please do not disturb existing tenant. Shown by appointment only.

1437 Fourth Street Santa Monica, CA



MP METROPOLITAN PACIFIC
REAL ESTATE GROUP

John Warfel . jwarfel@metpac.com . Gary Steinhardt . gsteinhardt@metpac.com . 310 395 7300

REPRESENTED BY METROPOLITAN COMMERCIAL REAL ESTATE SERVICES
Please do not disturb existing tenant. Shown by appointment only.

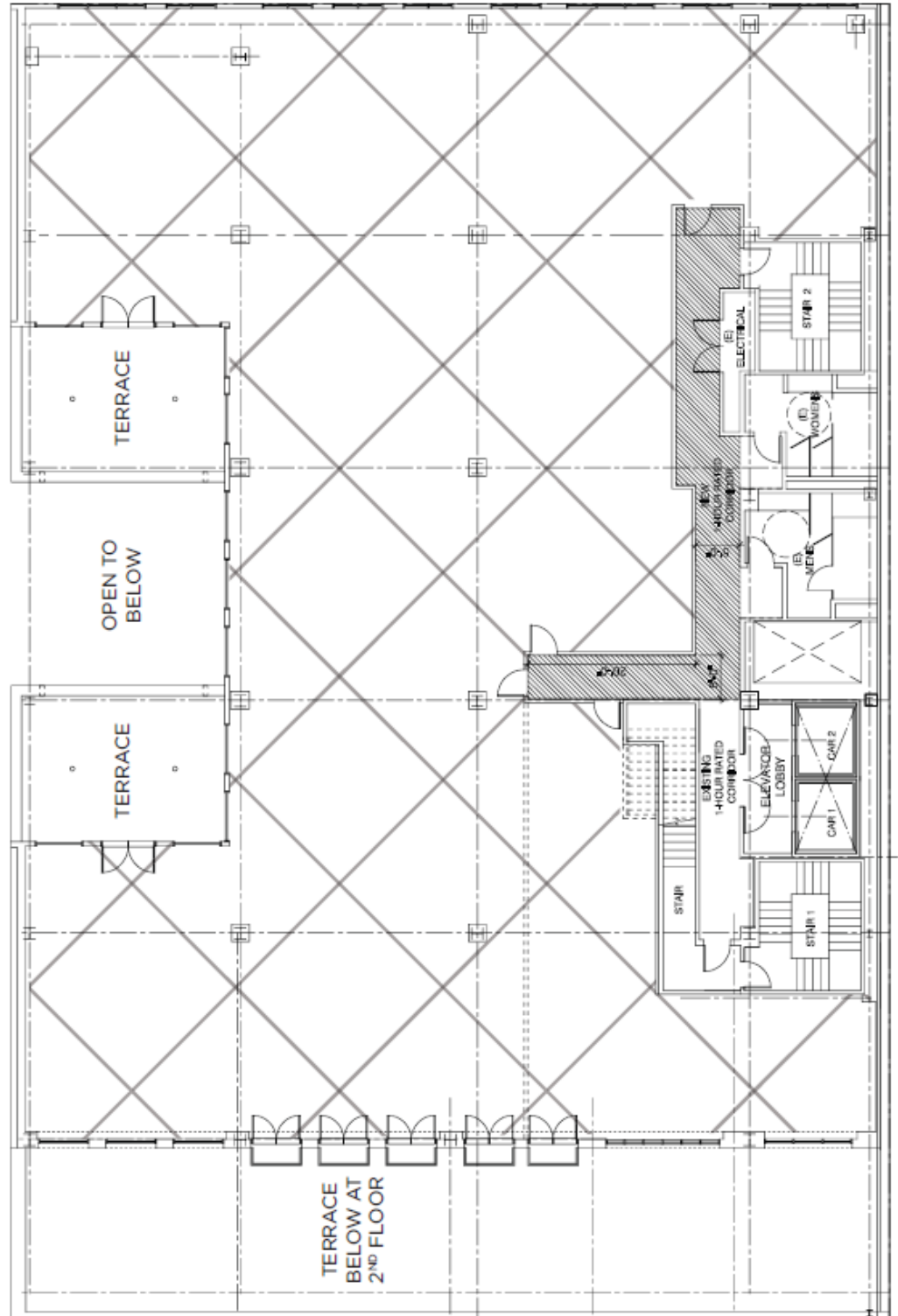
1437 4th St. 3rd Floor

Two large private balconies

Operable wood casement windows

High ceilings

Functional floorplate



1437 4th St. 3rd Floor

Proposed Demising Plan

