

# 20,000 sf Maspeth High Ceiling Warehouse With Land

56-41 55th Avenue, Maspeth, Queens





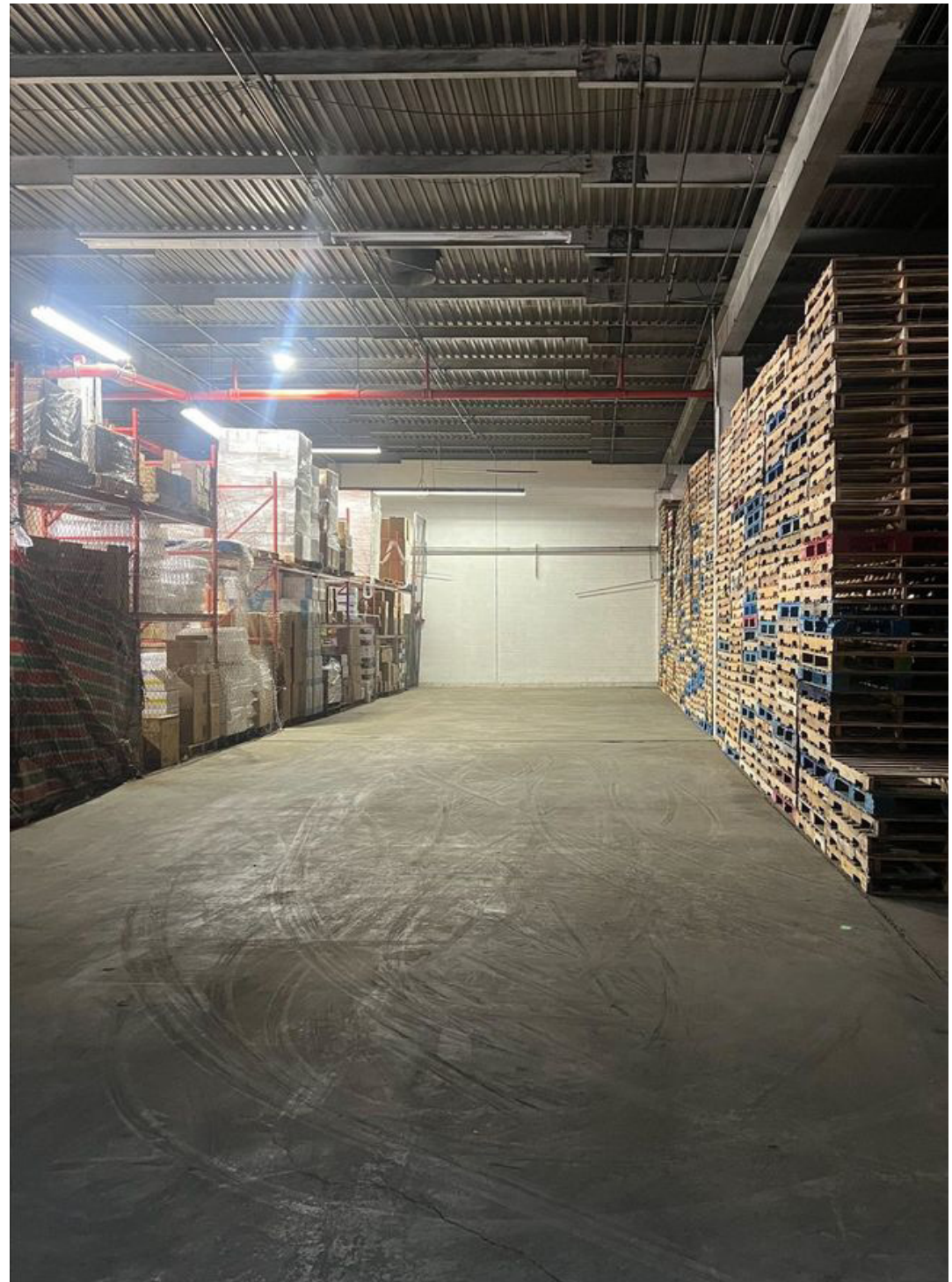
## Property Description

**DY Realty Group** has been retained on an exclusive basis to handle the subleasing of 56-41 55th Avenue in the Maspeth section of Queens.

Offering 20,000 square feet of functional warehouse space featuring a 20' clear ceiling height. Loading is facilitated by two interior docks. The property includes approximately 4,000 square feet of outdoor space/parking in the rear of the building.

Contact the Exclusive Agent for more information or to schedule a tour.

<b>Total Building</b>	20,000 sf 1-Story
<b>Total Land</b>	4,000 sf
<b>Loading</b>	2 Interior Loading Docks
<b>Ceiling Height</b>	20' Clear
<b>Zoning</b>	M1-1
<b>Heat</b>	Gas
<b>Power</b>	Heavy
<b>Term</b>	5 Year Sublease
<b>Asking Price</b>	<b><i>Call or E-mail</i></b>



ALL INFORMATION IS FROM SOURCES DEEMED RELIABLE, BUT SUBJECT TO: ERRORS, CHANGES WITHOUT NOTICE, PRIOR SALE OR LEASE, WITHDRAWAL WITHOUT NOTICE. ALL MEASUREMENTS ARE APPROXIMATE



# Aerial Photo

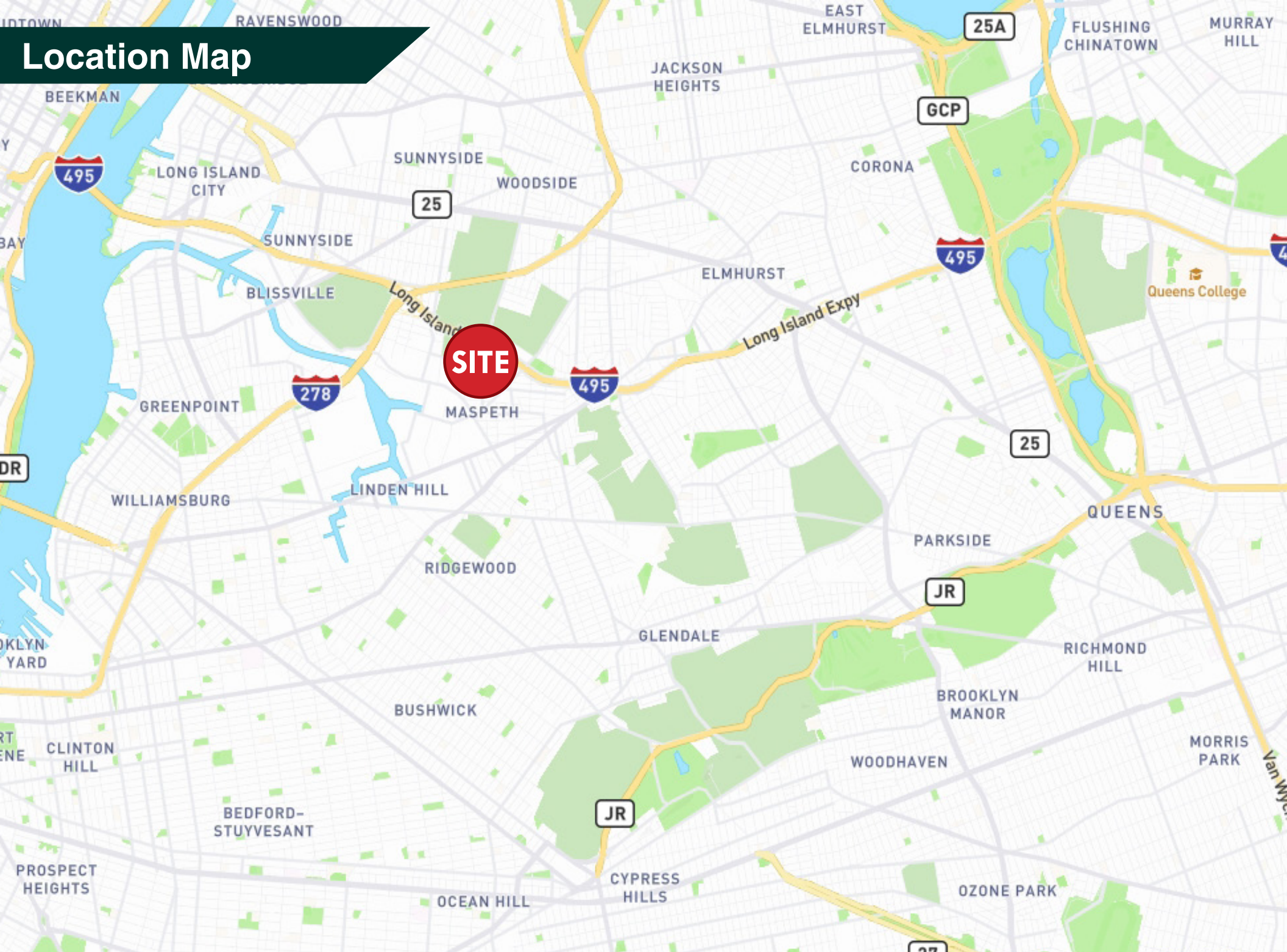


ALL INFORMATION IS FROM SOURCES DEEMED RELIABLE, BUT SUBJECT TO: ERRORS, CHANGES WITHOUT NOTICE, PRIOR SALE OR LEASE, WITHDRAWAL WITHOUT NOTICE. ALL MEASUREMENTS ARE APPROXIMATE

36-36 33RD STREET, SUITE 503 • LONG ISLAND CITY, NY 11106 • 718.729.7474 • [WWW.DYREALTY.COM](http://WWW.DYREALTY.COM)



# Location Map







**MICHAEL MARRA**

718.729.7474 x121

914.299.8781 Cell

[mmarra@dyrealty.com](mailto:mmarra@dyrealty.com)

ALL INFORMATION IS FROM SOURCES DEEMED RELIABLE, BUT SUBJECT TO: ERRORS, CHANGES WITHOUT NOTICE, PRIOR SALE OR LEASE, WITHDRAWAL WITHOUT NOTICE. ALL MEASUREMENTS ARE APPROXIMATE

36-36 33RD STREET, SUITE 503 • LONG ISLAND CITY, NY 11106 • 718.729.7474 • [WWW.DYREALTY.COM](http://WWW.DYREALTY.COM)