

# CAMPUS AT SCOTT

CLASS A, SANTA CLARA PROJECT FOR LEASE

SANTA  
CLARA  
SQUARE



3315 SCOTT

3325 SCOTT

3355 SCOTT

BOWERS AVENUE

SCOTT BOULEVARD

NEWMARK

JOE KELLY 408.987.4111

TRACEY SOLARI 408.987.4148

SKYLAR SMITH 949.637.2857





**SANTA CLARA SQUARE**

**3315 SCOTT**

**3325 SCOTT**

**3355 SCOTT**

**Full Building Opportunity**

# PROJECT HIGHLIGHTS



Class A project conveniently situated within a 5-minute stroll to Santa Clara Square offering more than 27 restaurants and shops



Outdoor collaboration area, bocce ball court, and basketball court



Fitness center with locker rooms and showers



<b>3355 Scott Blvd</b> <i>(Full Building Opportunity)</i>	1st Floor *	±8,213 SF
		±22,976 SF (AVAILABLE 3/1/2025)
	2nd Floor *	±38,636 SF
	3rd Floor *	±40,366 SF
	4th Floor *	±40,366 SF
<i>*can be combined for              ±150,557 SF</i>		
<b>3315 Scott Blvd</b>	2nd Floor	±38,788 SF
	4th Floor	±40,496 SF (AVAILABLE 11/1/2025)



# AMENITIES AERIAL



**Levi's**  
STADIUM


RIVERMARK VILLAGE


**CAMPUS**  
AT SCOTT



MERCADO SHOPPING CENTER



SANTA CLARA SQUARE




# FLOORPLAN - HYPOTHETICAL - SHELL CONDITION

3355 SCOTT BLVD | 1ST FLOOR | SUITE 150 | ±8,213 SF

3315

3325

3355



- POLISHED CONCRETE
- CARPET GENERAL
- CARPET ACCENT
- VCT
- NIC



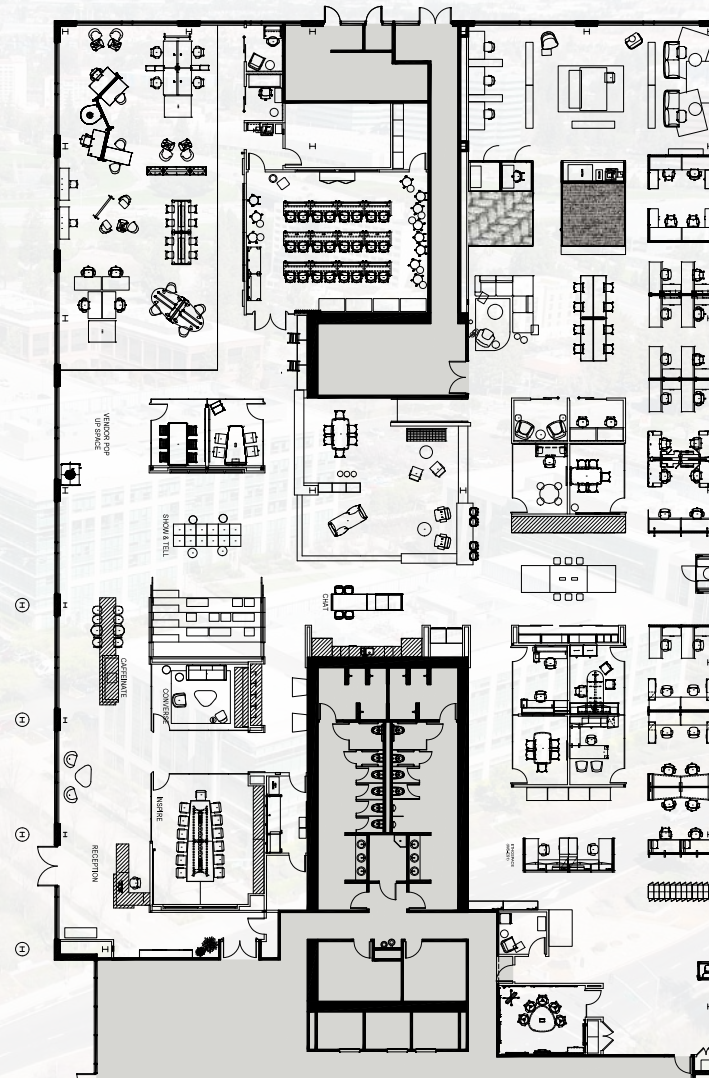
# FLOORPLAN

**3355 SCOTT BLVD** | 1ST FLOOR | SUITE 100 | ±22,976 SF

3315

3325

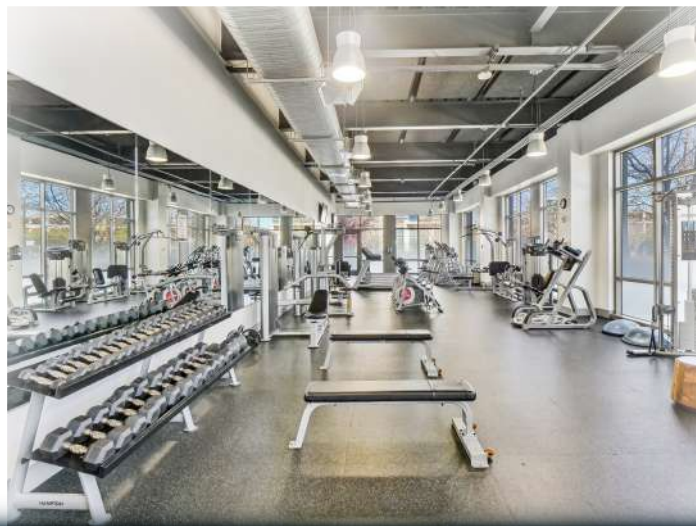
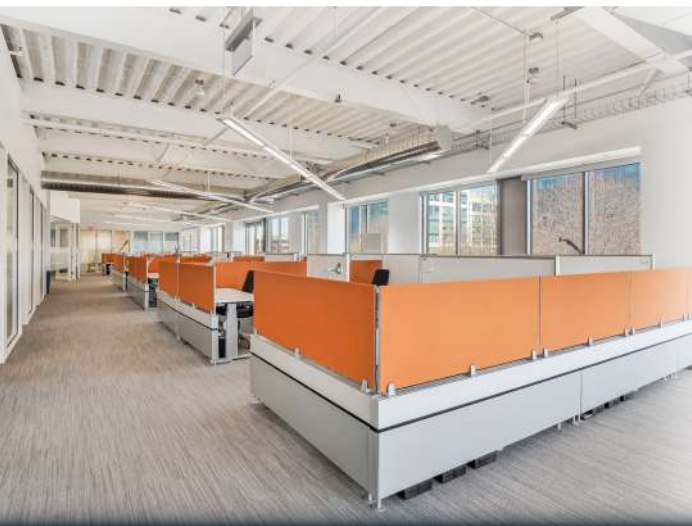
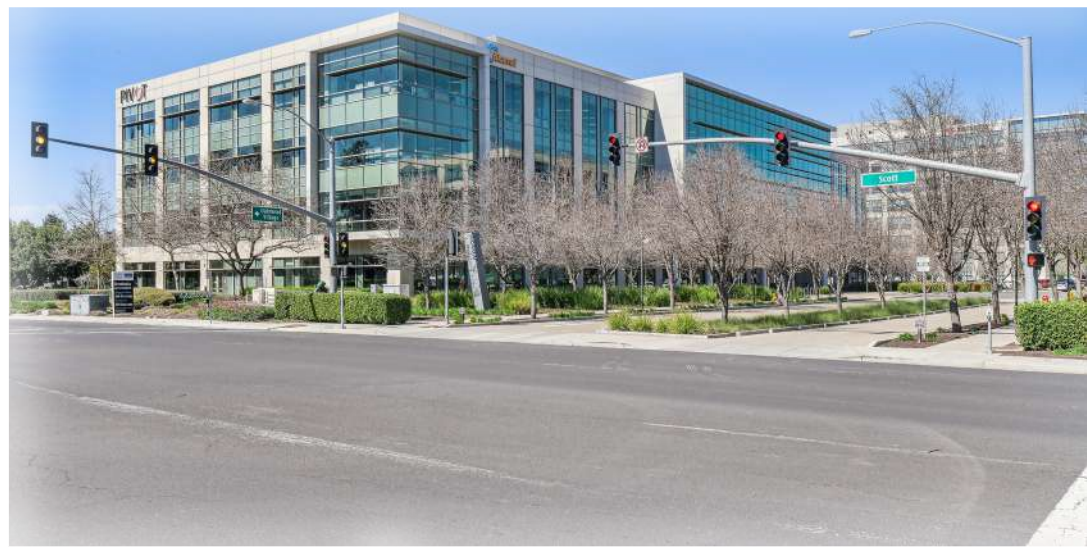
3355



**8 PRIVATE OFFICES** | **7 PHONE ROOMS** | **3 CONFERENCE ROOMS** | **5 COLLABORATION AREAS**



**3355 SCOTT BLVD** | SUITE 100





# FLOORPLAN

3355 SCOTT BLVD | 2ND FLOOR | SUITE 200 | ± 38,636 SF | PLUG & PLAY



VIEW MATTERPORT

3315

3325

3355



234 6X6 & 6X8 WORKSTATIONS | 22 PRIVATE OFFICES | 4 PHONE ROOMS | 14 CONFERENCE ROOMS



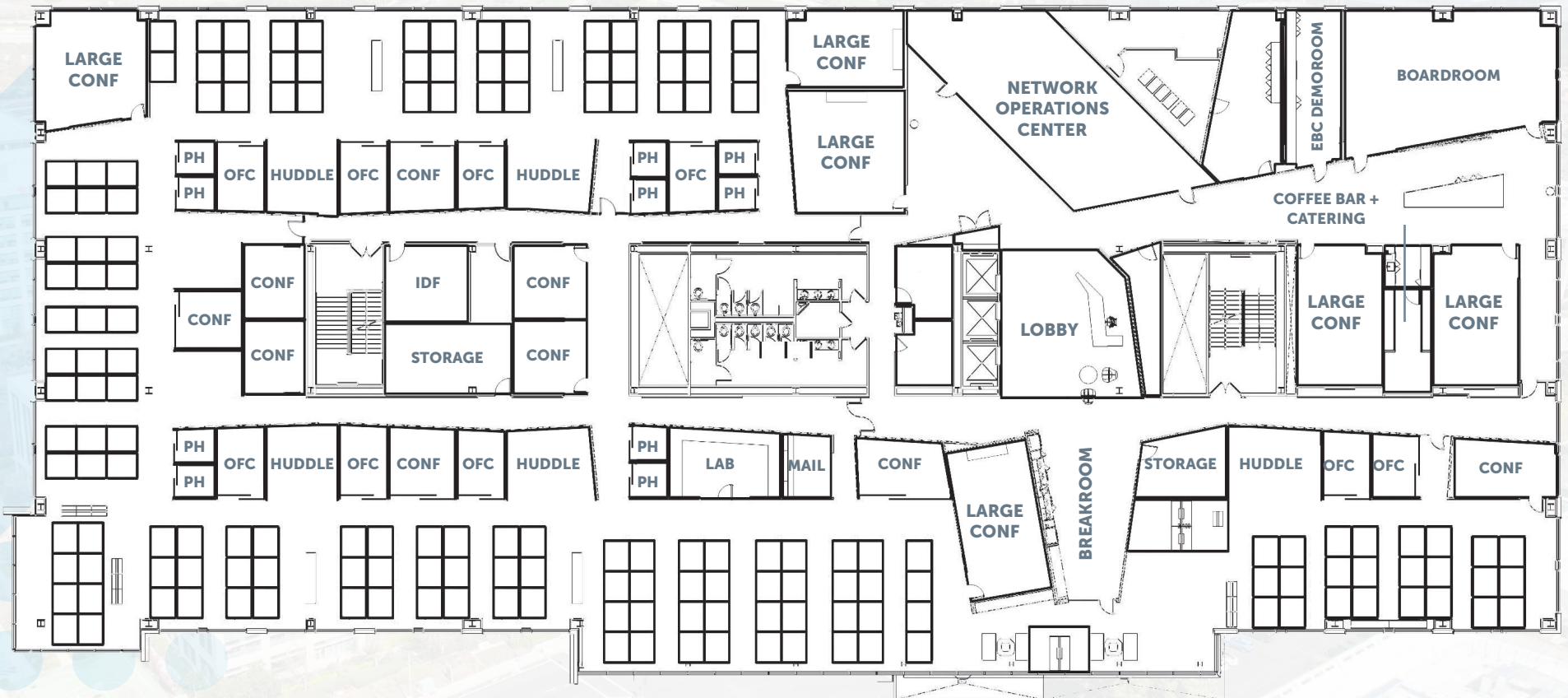
# FLOORPLAN

3355 SCOTT BLVD | 3RD FLOOR | SUITE 300 | ±40,366 SF

3315

3325

3355



**178 6X6 WORKSTATIONS | 9 PRIVATE OFFICES | 10 PHONE ROOMS**  
**16 CONFERENCE ROOMS | 6 COLLABORATION AREAS**



# FLOORPLAN

3355 SCOTT BLVD | 4TH FLOOR | SUITE 400 | ±40,366 SF

3315

3325

3355



**201 6X6 WORKSTATIONS | 13 PRIVATE OFFICES | 14 PHONE ROOMS**  
**9 CONFERENCE ROOMS | 6 COLLABORATION AREAS**



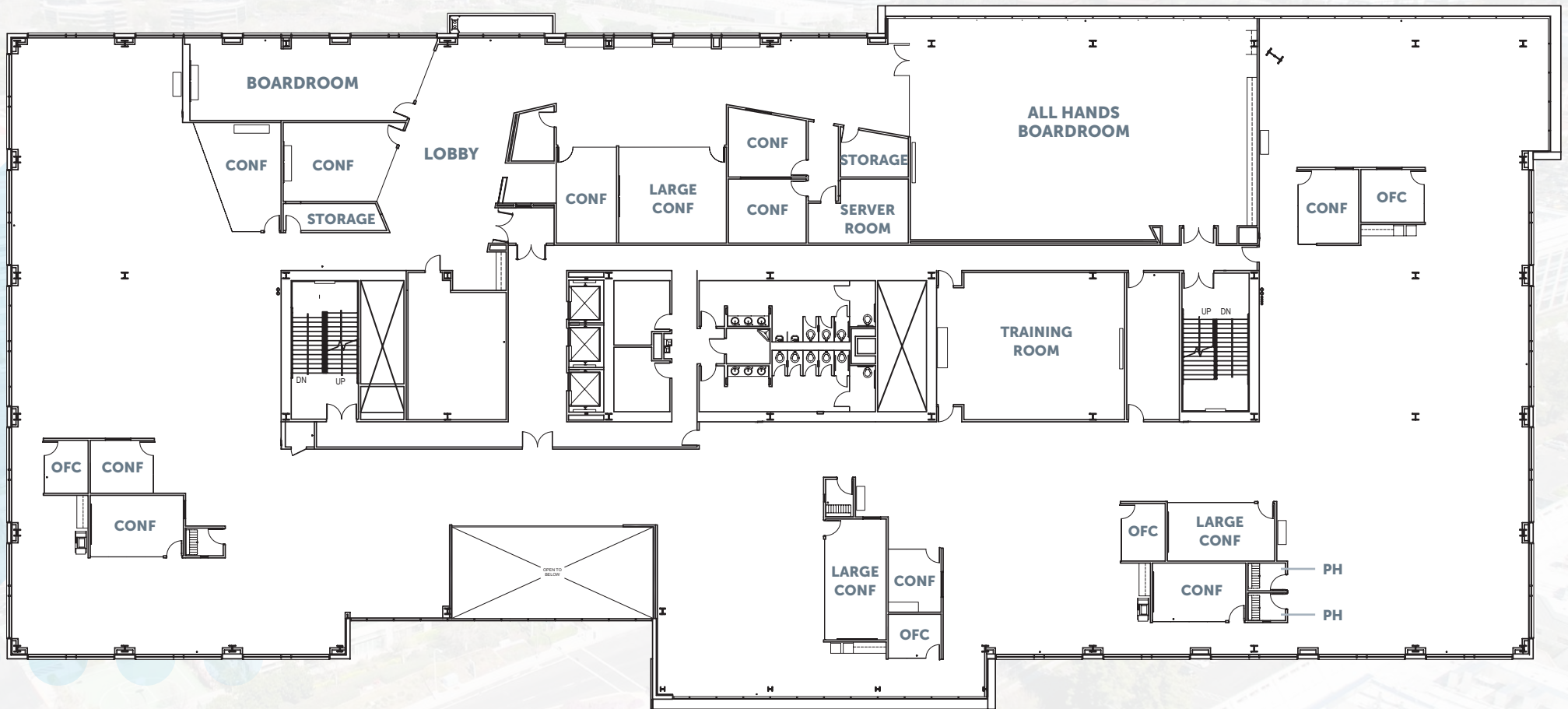
# FLOORPLAN

3315 SCOTT BLVD | 2ND FLOOR | SUITE 200 | ±38,788 SF

3315

3325

3355



161 30"X60" WORKSTATIONS | 4 PRIVATE OFFICES | 2 PHONE ROOMS | 14 CONFERENCE ROOMS



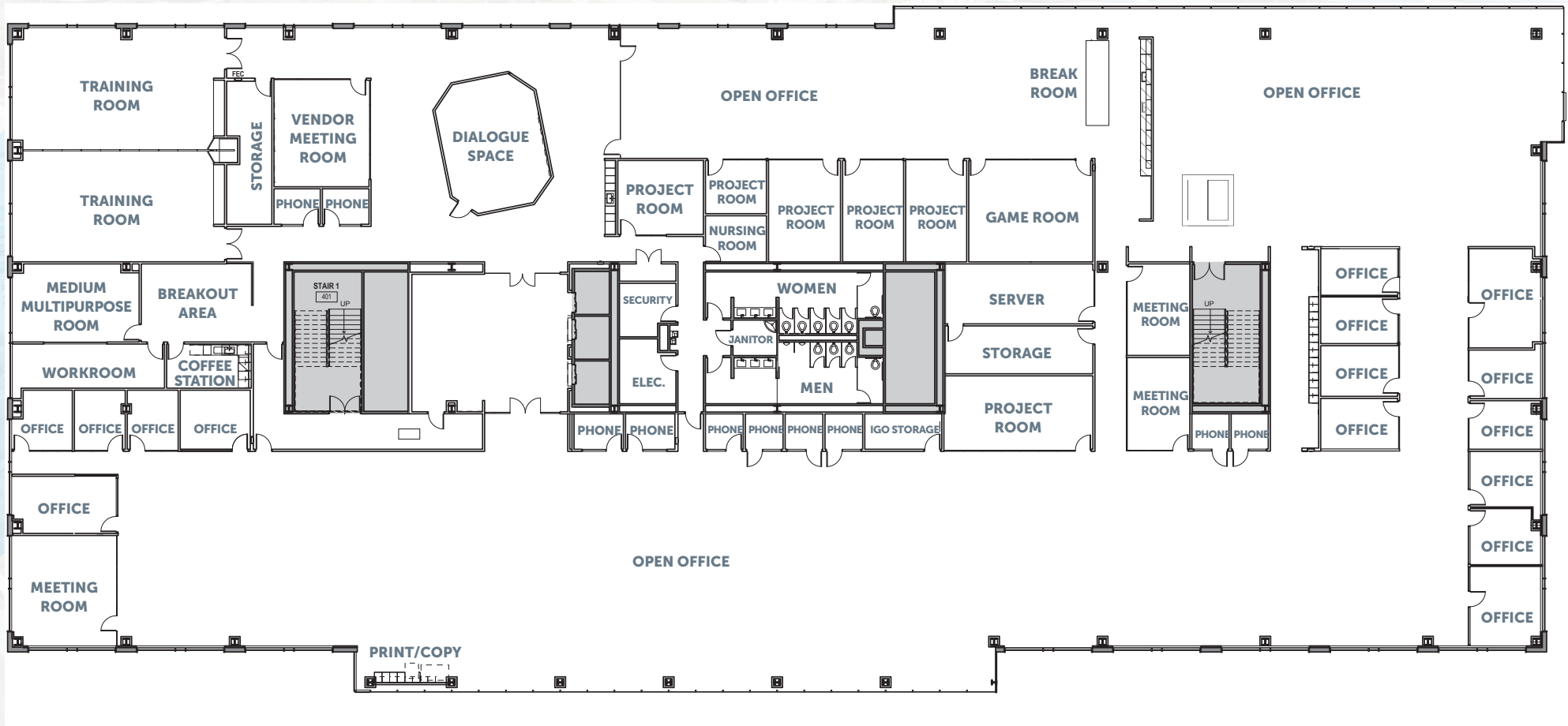
# FLOORPLAN

3315 SCOTT BLVD | 4TH FLOOR | SUITE 400 | ±40,496 SF

3315

3325

3355



16 PRIVATE OFFICES | 10 PHONE ROOMS | 11 CONFERENCE ROOMS

















# TRANSPORTATION MAP

-  ACE Commuter Rail
-  Caltrain
-  VTA
-  Transit Stops
-  Bicycle Lockers
-  Park & Ride





# CAMPUS

AT SCOTT

CLASS A, SANTA CLARA PROJECT FOR LEASE

101

SANTA CLARA SQUARE

BOWERS AVENUE

3315 SCOTT

3325 SCOTT

3355 SCOTT

SCOTT BOULEVARD

The distributor of this communication is performing acts for which a real estate license is required. The information contained herein has been obtained from sources deemed reliable but has not been verified and no guarantee, warranty or representation, either express or implied, is made with respect to such information. Terms of sale or lease and availability are subject to change or withdrawal without notice. MP23-257 | 10/24

NEWMARK

**JOE KELLY**  
408.987.4111  
joe.kelly@nrmk.com  
CA RE Lic #01420963

**TRACEY SOLARI**  
408.987.4148  
tracey.solari@nrmk.com  
CA RE Lic #01269780

**SKYLAR SMITH**  
949.637.2857  
skylar.smith@nrmk.com  
CA RE Lic #02196285