

Office Space for Sale or Lease

148 Madison Street – Mezzanine Level

Just East of Pike Street in Two Bridges / Chinatown District

Approx. 1,582 Rentable Square Feet

Right Next to the Manhattan Bridge

Open Space w/ Offices and Kitchenette

Attended Lobby Entrance

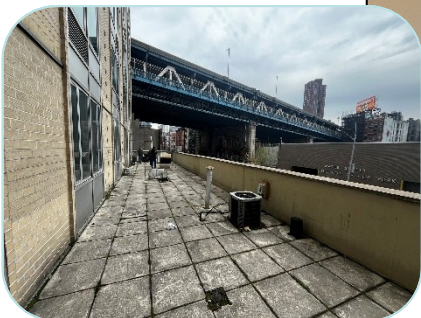
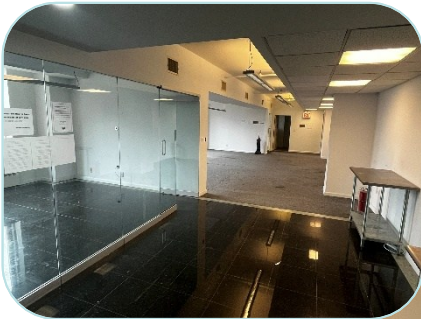
[Click Here for Virtual Tour](#)

Offering for Sale as Condo or Lease

Asking Rent / Price Upon Request

2nd Floor Office w/ Outdoor Area Available

Located where Two Bridges meets Chinatown, this is a great opportunity to purchase or lease this unit on the 2nd floor that comes with a large outdoor terrace for your private use. Built out with primarily open area, 3 offices, a kitchenette, tons of windows, HVAC, ADA accessible restroom in the suite and is located right off the elevator. Building has attended lobby and offers prime opportunity to own your own office space or lease. Ideal for a variety of uses including professional office, non-profit, medical, showroom or can be non-traditional such as wellness, fitness or any other legal use. Ready for immediate possession.



For More Information Contact:

Jeffrey Angel
212-719-7017

Jeffrey.angel@resnewyork.com

Yu Juan "June" Li
646-593-8112
june@resnewyork.com



Although the information contained herein has been provided by sources that we deem reliable, we do not guarantee its accuracy in any way. No expressed nor implied warranties are made as to the accuracy of any/all of the information contained herein and it should not be relied upon in any way by a prospective tenant. All information contained herein should be independently verified prior to anyone entering into an form of legal binding agreement to purchase, lease or otherwise procure the premises or situation presented herein. All information is subject to change or withdrawal without reason or notice. This flyer may contain errors and/or omissions for which RES, nor the landlord shall be held responsible for in any way.

148 Madison Street Neighborhood Information



Two Bridges Area Demographic Highlights

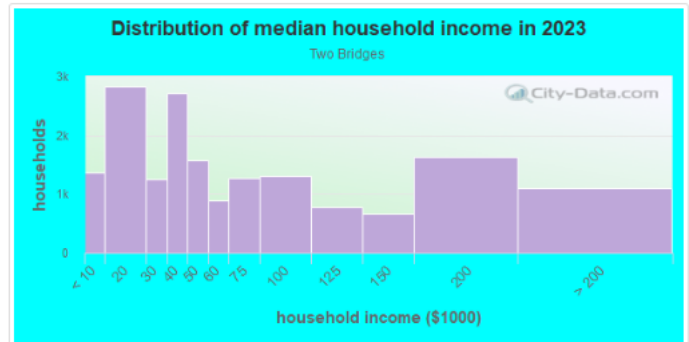
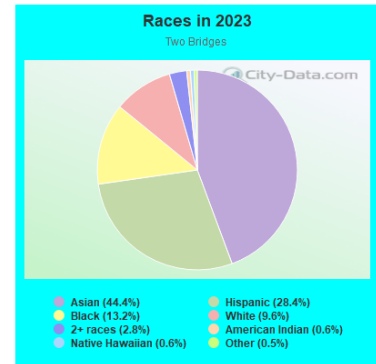
www.city-data.com

Population: 23,750

Population density:

Two Bridges:  52,142 people per square mile

New York:  27,226 people per square mile



Stats and Demographics for the 10002 ZIP Code

ZIP code 10002 is located in southeast New York and covers a slightly less than average land area compared to other ZIP codes in the United States. It also has an extremely large population density.

The people living in ZIP code 10002 are primarily Asian. The number of people in their late 20s to early 40s is extremely large while the number of seniors is extremely large. There are also an extremely small number of families and an extremely large number of single adults. The percentage of children under 18 living in the 10002 ZIP code is extremely small compared to other areas of the country.

Population	82,155	Land Area	0.82	sq mi	
Population Density	99,910	people per sq mi	Water Area	0.00	sq mi
Housing Units	39,702	Occupied Housing Units	36,733		
Median Home Value	\$535,600	Median Household Income	\$33,218		

www.unitedstateszipcodes.org

For More Information Contact:

Jeffrey Angel
212-719-7017
Jeffrey.angel@resnewyork.com

Yu Juan "June" Li
646-593-8112
june@resnewyork.com



The information contained herein has been provided by sources that we deem reliable, however, no expressed or implied warranties are made as to the accuracy of the information contained herein, and it should not be relied upon in any way. All information including but not limited to: square footage, frontage, pricing, availability, zoning and all other information should be independently verified by the interested parties prior to anyone entering into any form of legal binding agreement to purchase, lease or otherwise procure the premises or property presented. Information is subject to change or withdrawal without notice or reason and RES Commercial Corp. nor the Landlord provide any warranty or guarantee against any errors and/or omissions which may exist.