



Mills Farm: +/- 1 To 79 Acres For Sale, Lease, Or Build-To-Suit

ROGERS, AR: HOME TO WALMART WORLD HEADQUARTERS



PRESENTED BY:

KW COMMERCIAL
201 SW 14th St.
Suite 203
Bentonville, AR 72712

SALMONSEN GROUP
Executive Broker
O: 479.231.1355
C: 479.330.1250
sgleadmanager@gmail.com
AR #EB00066512

Table Of Contents

CONFIDENTIALITY & DISCLAIMER

All materials and information received or derived from Salmonsens Group Real Estate its directors, officers, agents, advisors, affiliates and/or any third party sources are provided without representation or warranty as to completeness, veracity, or accuracy, condition of the property, compliance or lack of compliance with applicable governmental requirements, developability or suitability, financial performance of the property, projected financial performance of the property for any party's intended use or any and all other matters.

Neither Salmonsens Group Real Estate its directors, officers, agents, advisors, or affiliates makes any representation or warranty, express or implied, as to accuracy or completeness of the any materials or information provided, derived, or received. Materials and information from any source, whether written or verbal, that may be furnished for review are not a substitute for a party's active conduct of its own due diligence to determine these and other matters of significance to such party. Salmonsens Group Real Estate will not investigate or verify any such matters or conduct due diligence for a party unless otherwise agreed in writing.

EACH PARTY SHALL CONDUCT ITS OWN INDEPENDENT INVESTIGATION AND DUE DILIGENCE.

Any party contemplating or under contract or in escrow for a transaction is urged to verify all information and to conduct their own inspections and investigations including through appropriate third party independent professionals selected by such party. All financial data should be verified by the party including by obtaining and reading applicable documents and reports and consulting appropriate independent professionals. Salmonsens Group Real Estate makes no warranties and/or representations regarding the veracity, completeness, or relevance of any financial data or assumptions. Salmonsens Group Real Estate does not serve as a financial advisor to any party regarding any proposed transaction. All data and assumptions regarding financial performance, including that used for financial modeling purposes, may differ from actual data or performance. Any estimates of market rents and/or projected rents that may be provided to a party do not necessarily mean that rents can be established at or increased to that level. Parties must evaluate any applicable contractual and governmental limitations as well as market conditions, vacancy factors and other issues in order to determine rents from or for the property.

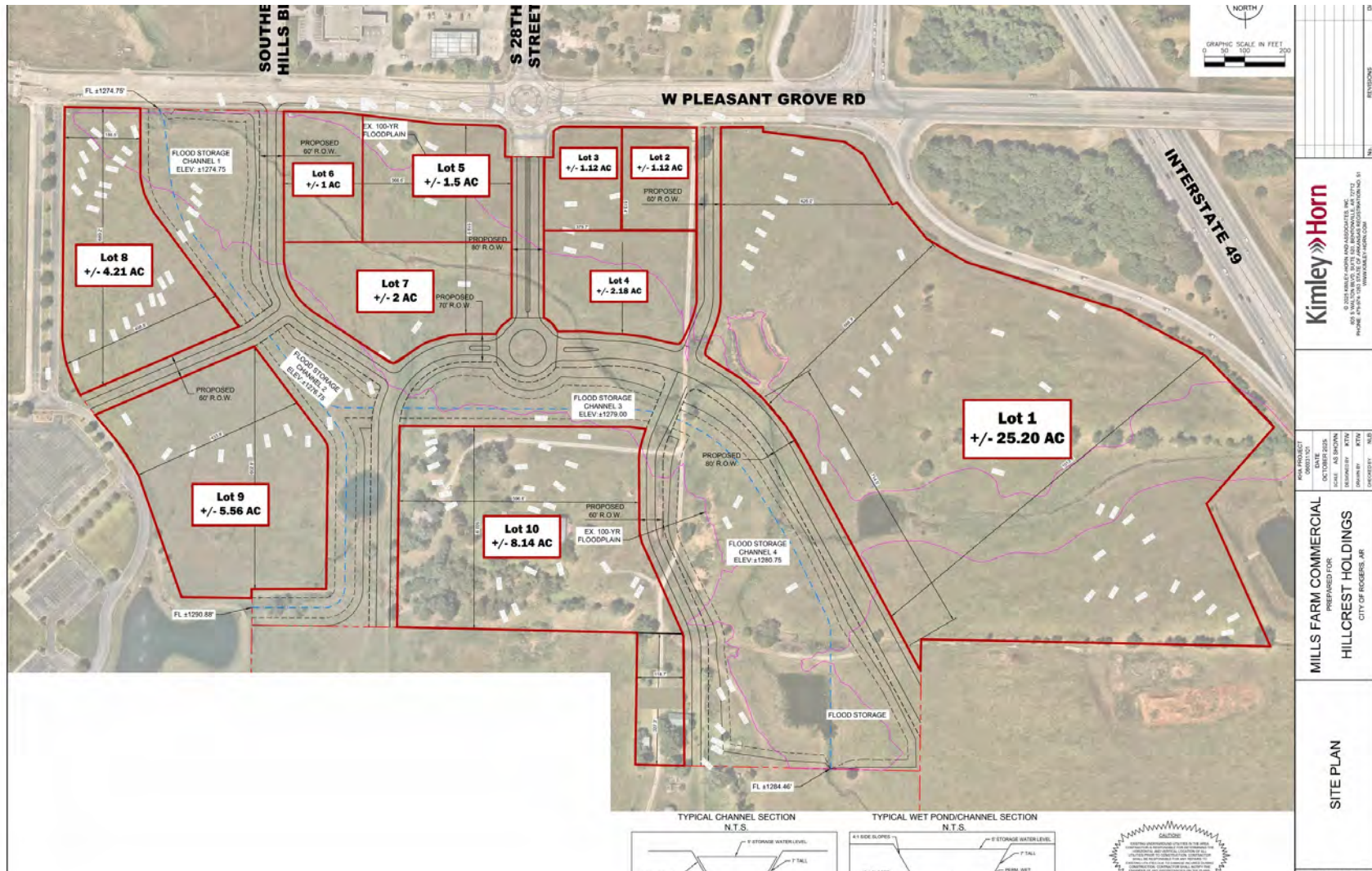
Legal questions should be discussed by the party with an attorney. Tax questions should be discussed by the party with a certified public accountant or tax attorney. Title questions should be discussed by the party with a title officer or attorney. Questions regarding the condition of the property and whether the property complies with applicable governmental requirements should be discussed by the party with appropriate engineers, architects, contractors, other consultants and governmental agencies. All properties and services are marketed by Salmonsens Group Real Estate in compliance with all applicable fair housing and equal opportunity laws.

TABLE OF CONTENTS

PROPERTY INFORMATION	4
LOT DESCRIPTION	8
LOCATION INFORMATION	22
DEMOGRAPHICS	28



Site Plan



MILLS FARM

PROPERTY INFORMATION

1

PROPERTY SUMMARY

PROPERTY HIGHLIGHTS

PROPERTY DETAILS

Property Summary



PROPERTY DESCRIPTION

Discover an exceptional opportunity to buy or lease +/- 1 to 79 acres of prime commercial land located just off I-49 in Rogers, Arkansas. This highly visible site offers direct access from Exit 81 and boasts full utility access, making it ready for immediate development. Surrounded by top national retailers such as Walmart, Starbucks, Chick-fil-A, McDonald's, Cavender's, Academy Sports, Ross, and a future Dick's Sporting Goods, the property is ideally positioned for high-traffic commercial use. The location sees approx. 110,000 VPD on I-49 and around 18,000 VPD on W Pleasant Grove Rd, offering excellent exposure for grocery stores, retail stores, restaurants, and QSR concepts. The property is just 2.5 miles from Top Golf and the Walmart AMP, approx. 10 minutes from the new Walmart World HQ, and less than 20 minutes from Northwest Arkansas National Airport (XNA). Additionally, the University of Arkansas for Medical Sciences (UAMS) is building a new facility directly behind the site, and Schuber Mitchell Homes is set to develop approx. 550 townhome condos nearby - adding even more long-term growth and foot traffic to this dynamic location.

OFFERING SUMMARY

Sale Price:	\$1,950,000 - \$89,000,000
Lot Size:	1 to 79 Acres
Zoning:	Highway Commercial
Utilities:	All on Site
Avg. HH Income:	\$168,000



Property Highlights



HIGHLIGHTS

- Flexible Lot Sizes: +/- 1 to 79 Acres of prime commercial land available for development.
- Strategic Location: Located just off I-49 at Exit 81 in Rogers, AR, with easy access and excellent visibility.
- High Traffic Counts: Approx. 110,000 VPD on I-49 and 18,000 VPD on W Pleasant Grove Rd.
- Utilities On-Site: All utilities available, making the site development-ready.
- Surrounded by Major Retailers: Neighboring national brands include Walmart, Starbucks, Chick-fil-A, McDonald's, Ross, Academy Sports, and a future Dick's Sporting Goods.
- Proximity to Key Attractions: Just minutes from Top Golf, the Walmart AMP, the new Walmart World HQ, and XNA Airport.
- Upcoming Developments Nearby: Adjacent to future UAMS Facility and a 550-unit townhome community by Schuber Mitchell Homes.



Property Details

Sale Price

**\$1,950,000 - \$89,000,000
DEPENDING ON PARCEL SIZE**

LOCATION INFORMATION

Property Name	Mills Farm
Street Address	SW Quadrant of Pleasant Grove Rd/I-49
City, State, Zip	Rogers, AR 72758
County	Benton

PROPERTY INFORMATION

Property Type	Land
Property Subtype	Mixed-Use
Lot Size	79 Acres
Traffic Count	110,000 and 18,000
Traffic Count Street	I-49 and W Pleasant Grove Rd
Amenities	High Traffic Counts Surrounded by National Retailers Right off I-49 (Exit 81) All Utilities Available on Site Adjacent to Future UAMS Facility and a 550-unit Townhome Community by Schuber Mitchell Homes.



MILLS FARM

LOT DESCRIPTION

2

ADDITIONAL PHOTOS

LOT 1: 25.20 ACRES

LOT 2: 1.12 ACRES

LOT 3: 1.12 ACRES

LOT 4: 2.18 ACRES

LOT 5: 1.5 ACRES

LOT 6: 1 ACRE

LOT 7: 2 ACRES

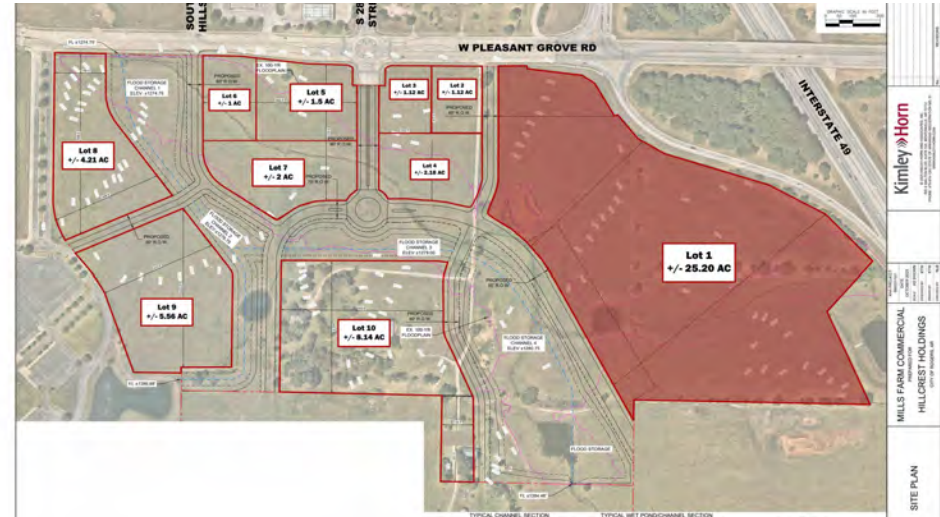
LOT 8: 4.21 ACRES

LOT 9: 5.56 ACRES

Additional Photos



Lot 1: +/- 25.20 Acres - \$36,119,074

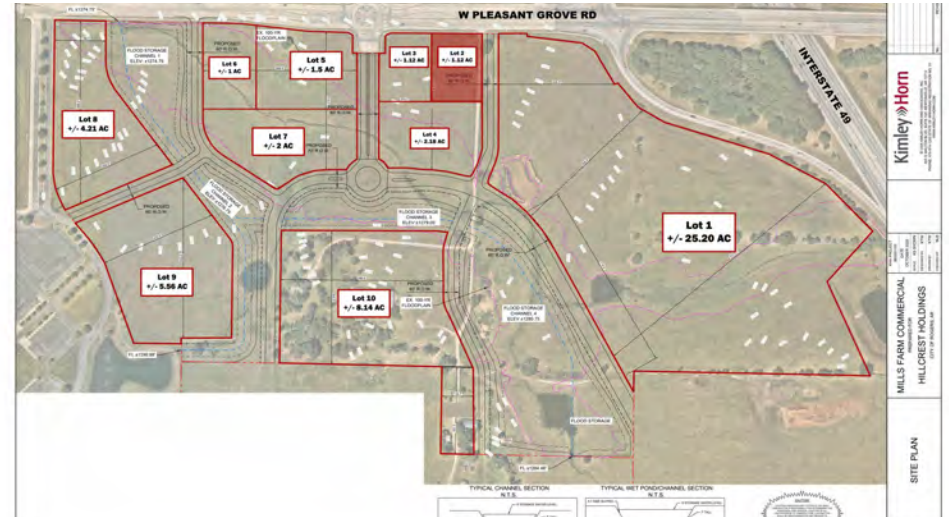


LOT HIGHLIGHTS

- +/- 25.20 Acres of prime land with frontage to I-49 (110,000 VPD)
- Designed perfectly for large big box retailer, grocery store, hospitality, or general retail
- Situated across from Casey's General Store and near Walmart, Starbucks, Chick-fil-A, McDonald's, and more
- A new road is planned to be constructed next to this site
- Schuber Mitchell Homes is planning to build +/- 520 housing units near this site
- Site plan is preliminary; shape, size, and access are subject to change and can be tailored to suite the end user



Lot 2: +/- 1.12 Acres - \$2,184,000

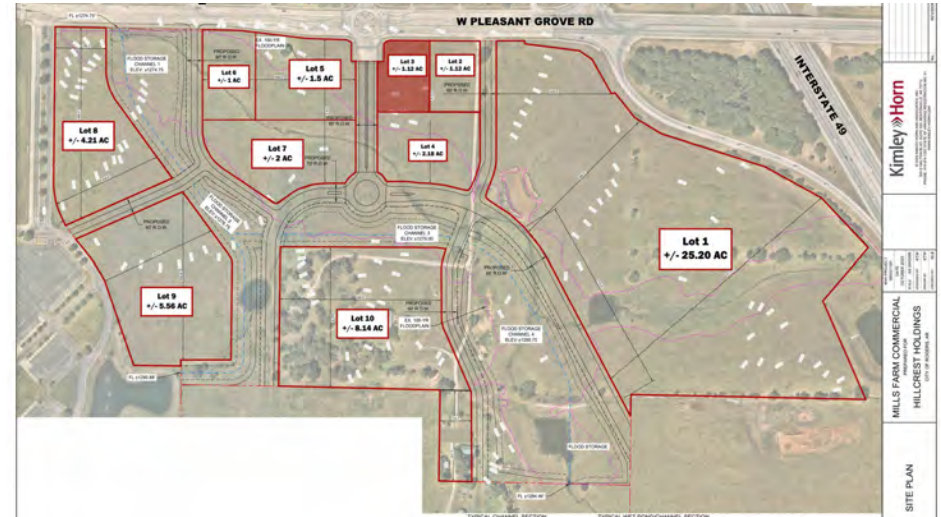


LOT HIGHLIGHTS

- +/- 1.12 Acres of prime land fronting W Pleasant Grove Rd (18,000 VPD)
- Perfect for restaurants, QSRs, pharmacies, coffee shops, banks, and general retail
- Corner lot situated at the on/off ramp for I-49
- Situated near Walmart, Starbucks, Chick-fil-A, McDonald's, and more
- Site plan is preliminary; shape, size, and access are subject to change and can be tailored to suite the end user



Lot 3: +/- 1.12 Acres - \$2,184,000

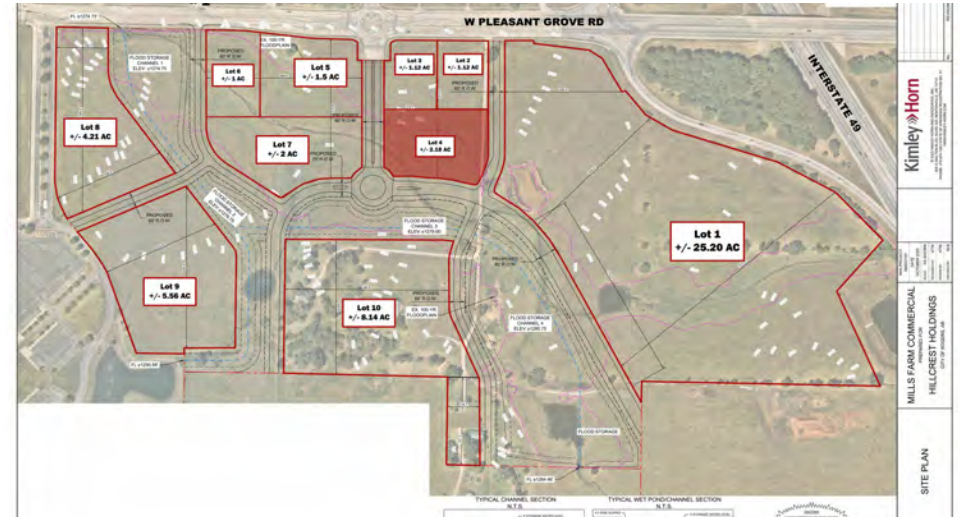


LOT HIGHLIGHTS

- +/- 1.12 Acres of prime land on W Pleasant Grove Rd (18,000 VPD)
- Future road to be built around the parcel
- Gas at street, 10" sewer lines, 24" water line, and electric on site
- Perfect for restaurants, QSRs, pharmacies, coffee shops, banks, and general retail
- Situated across from Walmart, Starbucks, Chick-fil-A, McDonald's, and more
- Site plan is preliminary; shape, size, and access are subject to change and can be tailored to suite the end user



Lot 4: +/- 2.18 Acres - \$4,142,000

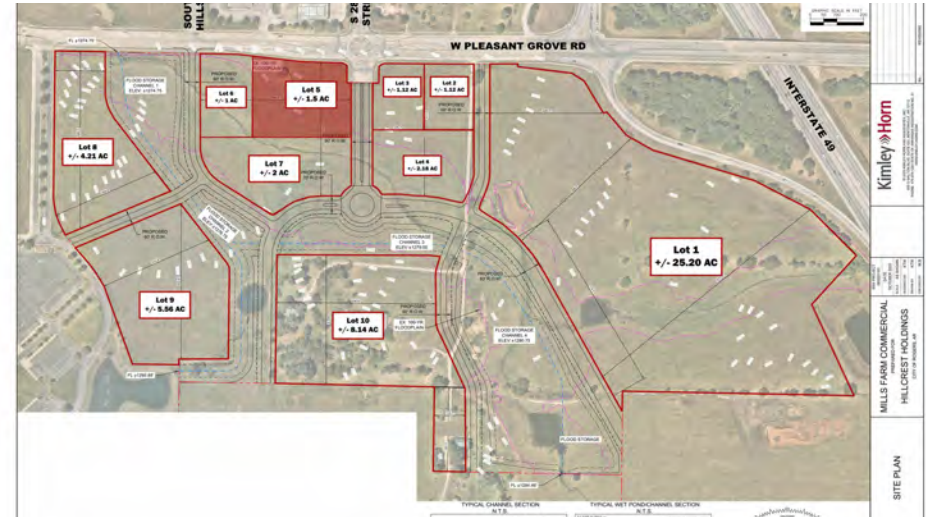


LOT HIGHLIGHTS

- +/- 2.18 Acres of prime land on W Pleasant Grove Rd (18,000 VPD)
- Future road to be built around the parcel
- Gas at street, 10" sewer lines, 24" water line, and electric on site
- Perfect for restaurants, QSRs, pharmacies, coffee shops, banks, and general retail
- Situated across from Walmart, Starbucks, Chick-fil-A, McDonald's, and more
- Site plan is preliminary; shape, size, and access are subject to change and can be tailored to suite the end user



Lot 5: +/- 1.5 Acres - \$2,925,000

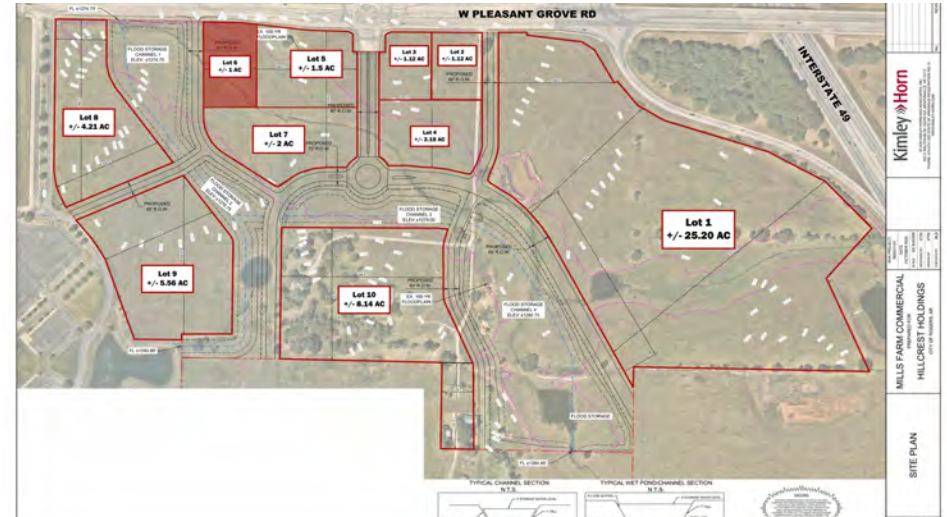


LOT HIGHLIGHTS

- +/- 1.5 Acres of prime land with frontage to W Pleasant Grove Rd (18,000 VPD)
- Future road to be built around the parcel
- Gas at street, 10" sewer lines, 24" water line, and electric on site
- Perfect for restaurants, QSRs, pharmacies, coffee shops, banks, and general retail
- Situated across from Walmart, Starbucks, Chick-fil-A, McDonald's, and more
- Site plan is preliminary; shape, size, and access are subject to change and can be tailored to suite the end user



Lot 6: +/- 1 Acre - \$1,950,000

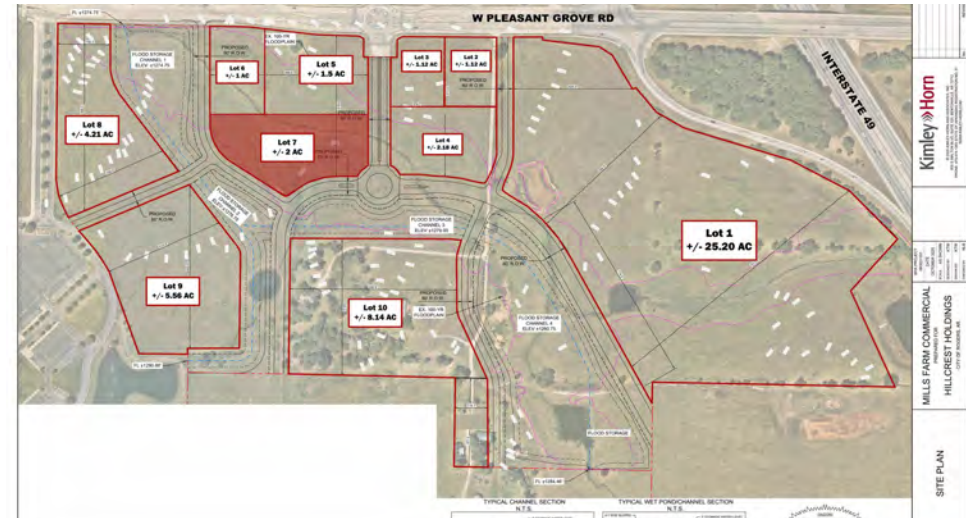


LOT HIGHLIGHTS

- +/- 1 Acre of prime land with frontage to W Pleasant Grove Rd (18,000 VPD)
- Future road to be built around the parcel
- Gas at street, 10" sewer lines, 24" water line, and electric on site
- Perfect for restaurants, QSRs, pharmacies, coffee shops, banks, and general retail
- Situated across from Walmart, Starbucks, Chick-fil-A, McDonald's, and more
- Site plan is preliminary; shape, size, and access are subject to change and can be tailored to suite the end user



Lot 7: +/- 2 Acres - \$3,750,000

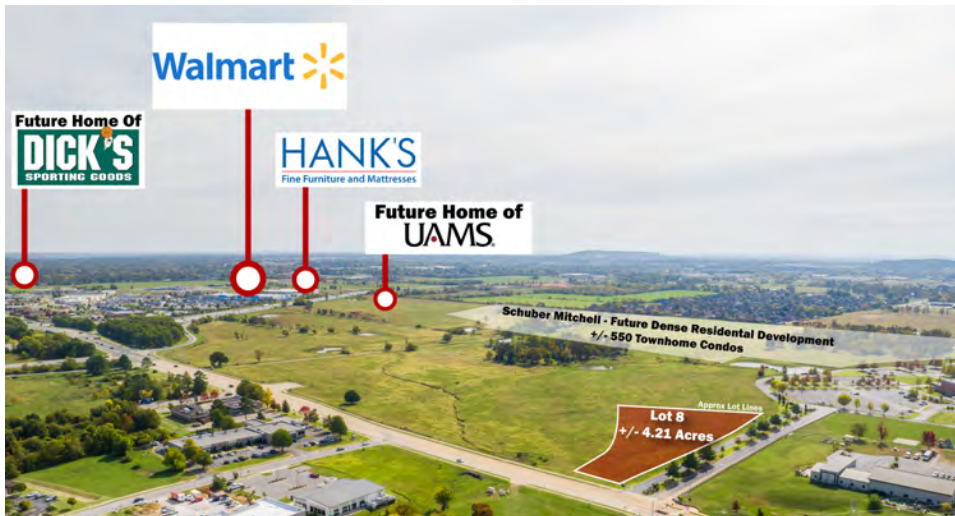
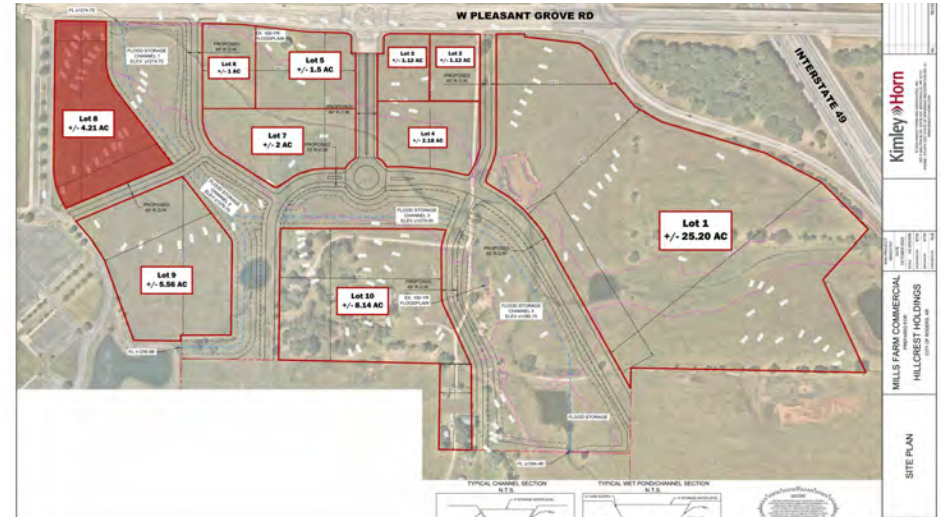


LOT HIGHLIGHTS

- +/- 2 Acres of prime land on W Pleasant Grove Rd (18,000 VPD)
- Future road to be built around the parcel
- Gas at street, 10" sewer lines, 24" water line, and electric on site
- Perfect for restaurants, QSRs, pharmacies, coffee shops, banks, and general retail
- Situated across from Walmart, Starbucks, Chick-fil-A, McDonald's, and more
- Site plan is preliminary; shape, size, and access are subject to change and can be tailored to suite the end user



Lot 8: +/- 4.21 Acres - \$6,990,000

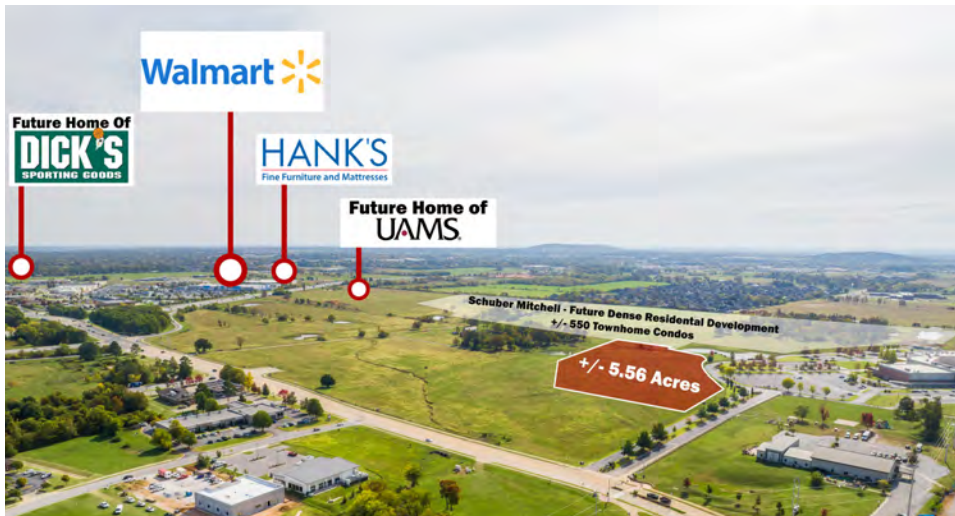
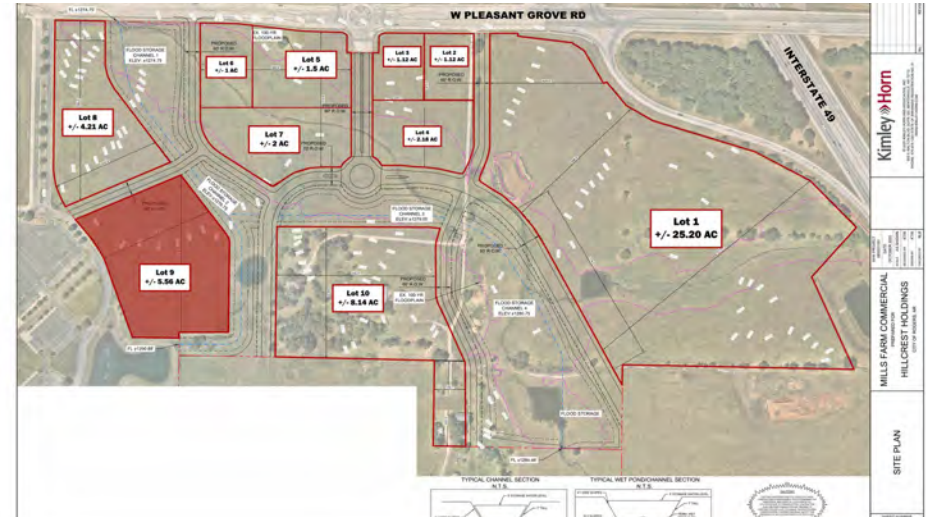


LOT HIGHLIGHTS

- +/- 4.21 Acres of prime land off Pleasant Grove Rd (18,000 VPD)
- Perfect for retail, big box, grocery, and more
- Can fit a +/- 30,000 SF Building
- Situated across the interstate from Walmart, McDonald's, Starbucks, Chick-fil-A, Cavender's, and a future Dick's Sporting Goods
- Across the street from Casey's Gas Station and I-49 off-ramp
- Site plan is preliminary; shape, size, and access are subject to change and can be tailored to suite the end user



Lot 9: +/- 5.56 Acre Lot - \$7,706,000

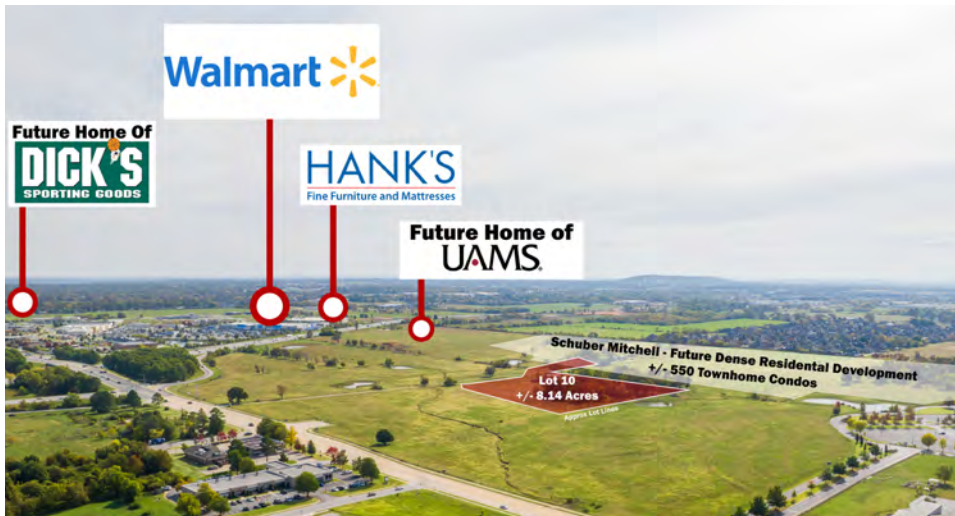
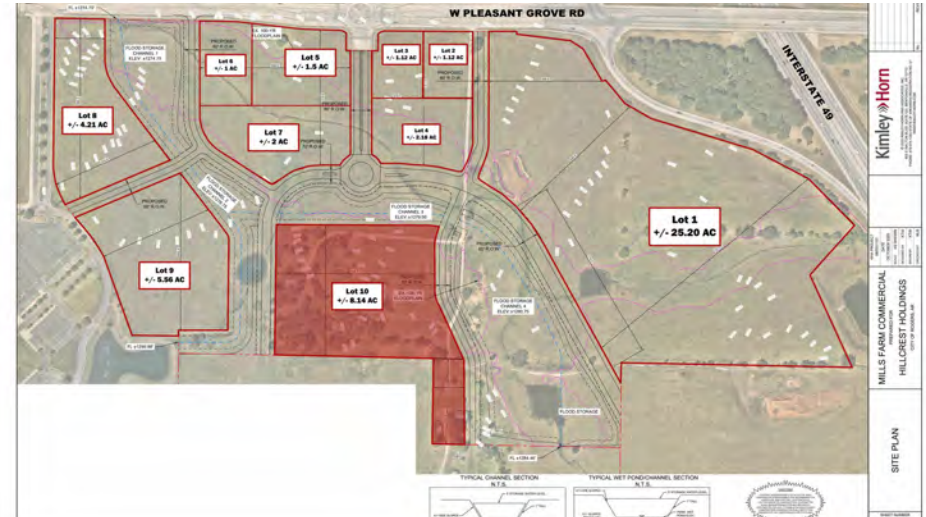


LOT HIGHLIGHTS

- +/- 5.56 Acres of prime land off Pleasant Grove Rd (18,000 VPD)
- Perfect for retail, big box, grocery, and more
- Can fit a +/- 50,000 SF Big Box
- Situated across the interstate from Walmart, McDonald's, Starbucks, Chick-fil-A, Cavender's, and a future Dick's Sporting Goods
- Schuber Mitchell is building a brand new townhome community directly next to this site
- Site plan is preliminary; shape, size, and access are subject to change and can be tailored to suite the end user



Lot 10: +/- 8.14 Acres - \$11,599,500

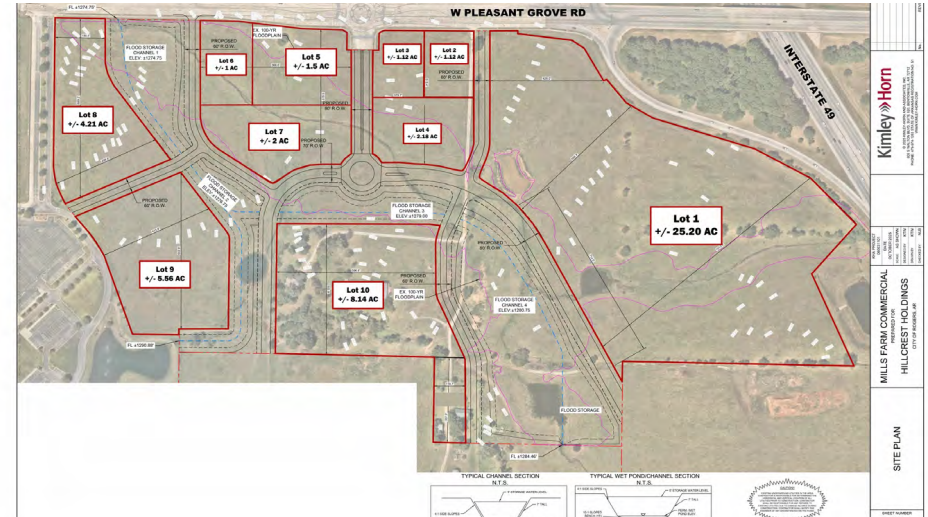


LOT HIGHLIGHTS

- +/- 8.14 Acres of prime land off I-49 (110,000 VPD)
- Perfect for retail, big box, grocery, and more
- Can fit a +/- 75,000 SF Big Box
- Situated across the interstate from Walmart, McDonald's, Starbucks, Chick-fil-A, Cavender's, and a future Dick's Sporting Goods
- Central lot the Mills Farm Retail Development, and directly next to the new Schuber Mitchell Townhome Development
- Site plan is preliminary; shape, size, and access are subject to change and can be tailored to suite the end user



All 79 Acres - \$89,000,000



LOT HIGHLIGHTS

- +/- 79 Acres of prime land off I-49 (110K VPD) and W Pleasant Grove Rd (18K VPD)
- Perfect for big box retail, grocery stores, pharmacies, coffee shop, general retail, and more
- Situated near Walmart, Starbucks, Chick-fil-A, McDonald's, Academy, a future Dick's Sporting Goods, and more
- University of Arkansas for Medical Sciences (UAMS) is building a new facility next to this site
- Schubert Mitchell Homes is set to develop +/- 520 housing units next to this site as well
- Site plan is preliminary; shape, size, and access are subject to change and can be tailored to suite the end user



MILLS FARM

LOCATION INFORMATION

3

REGIONAL MAP

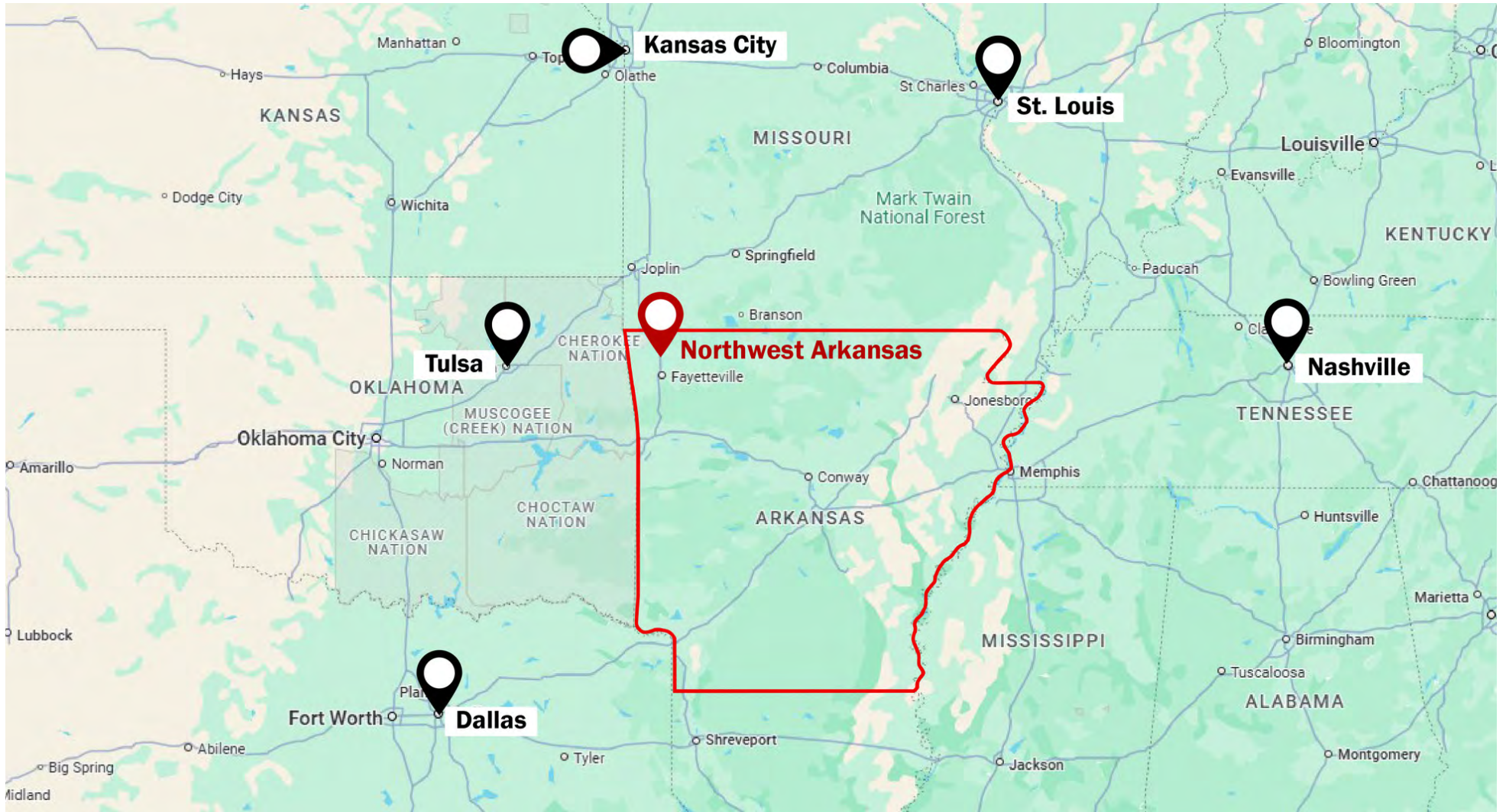
LOCATION MAP

SCHUBER MITCHELL DEVELOPMENT

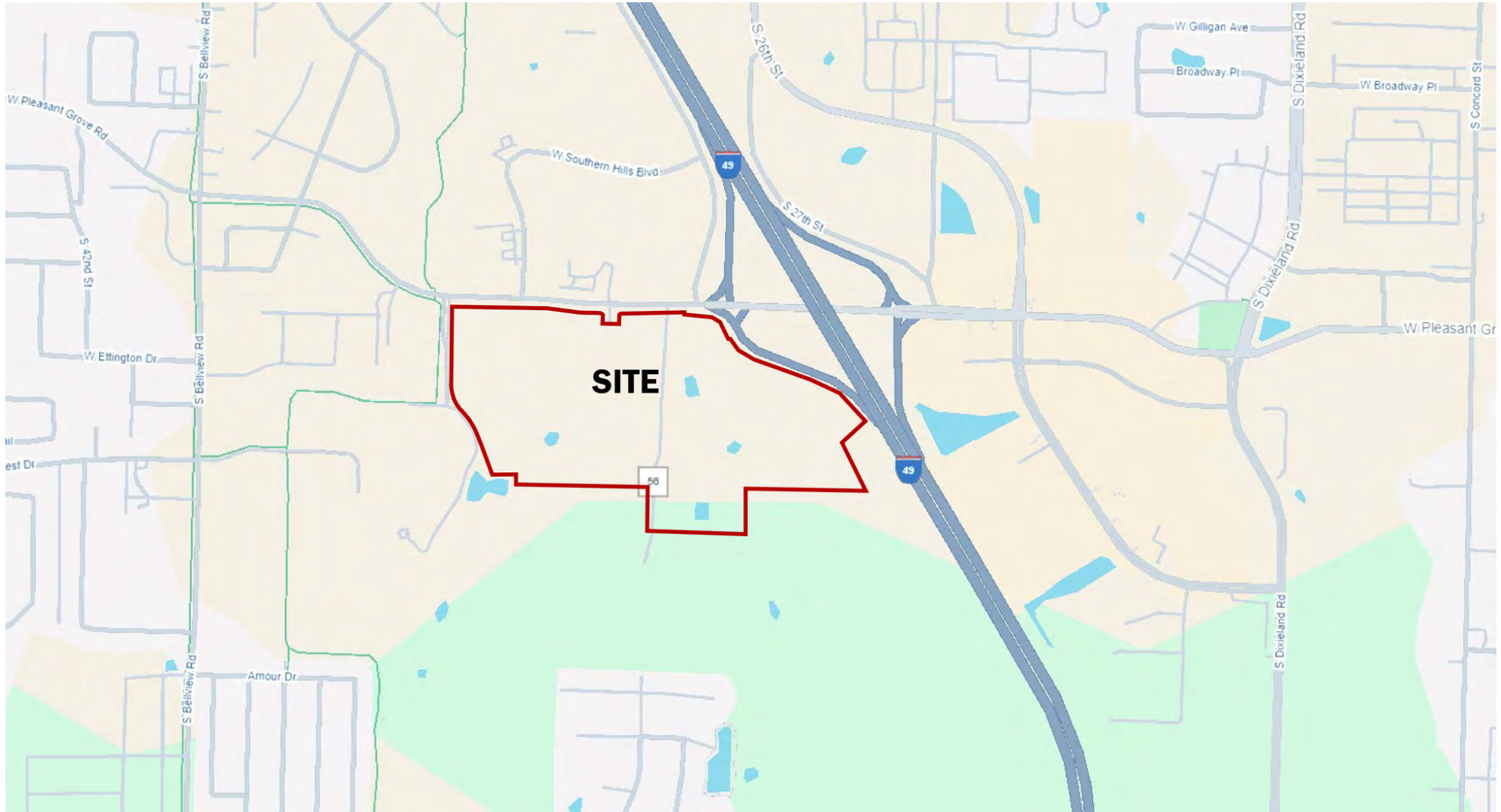
RETAILER MAP

NWA SURROUNDING SITES

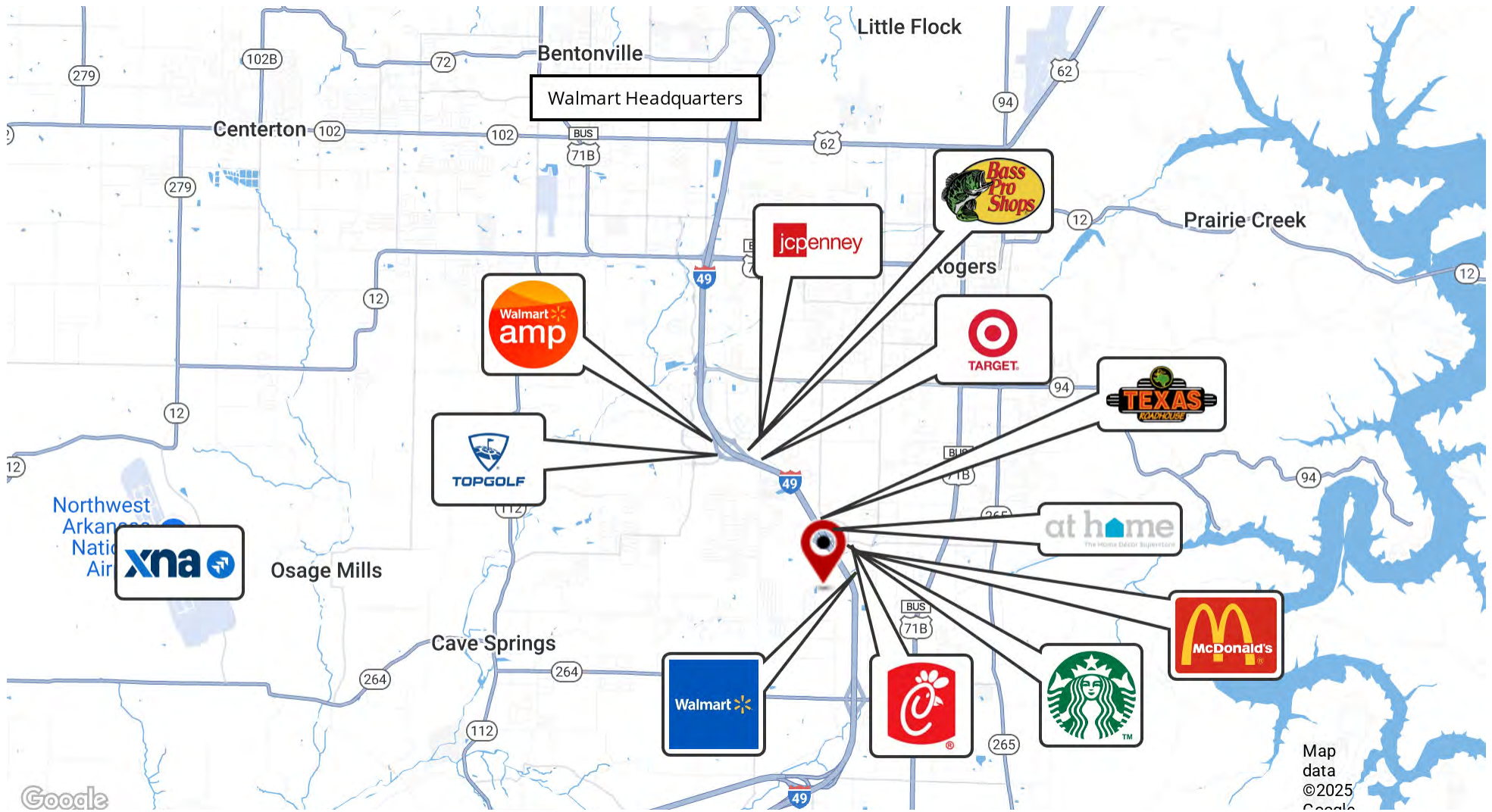
Regional Map



Location Map



Retailer Map



Northwest Arkansas Surrounding Sites

1. Crystal Bridges: A world-class museum in Bentonville, AR featuring a renowned collection of American art.

2. XNA: Northwest Arkansas Airport is a modern, convenient airport offering direct flights to major U.S. cities.

3. SITE: +/- 79 Acres of prime commercial land just off I-49. Full utility access, with gas at the street, and water, sewer, and electric on site. Ideal for big box, grocery, retail, and more!

4. Walmart HQ: A 350-acre, sustainability-driven workplace featuring office buildings, a fitness center, childcare facility, food hall, public retail, and miles of greenways connecting to downtown Bentonville.

5. NWACC: Northwest Arkansas Community College is a public community college offering affordable certificate and associate degree programs.

6. Pinnacle Hills Promenade: A vibrant 933,984 SF outdoor retail lifestyle center in Rogers, AR spanning over 150 landscaped acres with nearly 100 stores and anchors like Target, Dillard's, JC Penney, Best Buy, and Dave & Buster's.

7. University of Arkansas: A major public research university in Fayetteville, AR offering a wide range of academic programs and serving as the state's flagship campus.



Salmonsens
Group

kw MARKET PRO
REALTY
KELLERWILLIAMS.



MILLS FARM

DEMOGRAPHICS

4

DEMOGRAPHICS REPORT

DEMOGRAPHICS MAP

Demographics Report



Demographic and Income Profile

1616-1656 S Mills Pl
 1616-1656 S Mills Pl, Rogers, Arkansas, 72758
 Ring: 1 mile radius

Prepared by Esri

Issue Date: 06/20/25
 Last Update: 06/19/25

Summary	Census 2010	Census 2020	2024	2029
Population	2,782	4,723	5,566	6,506
Households	1,060	2,042	2,412	2,853
Families	818	1,307	1,502	1,743
Average Household Size	2.62	2.26	2.27	2.25
Owner Occupied Housing Units	785	1,118	1,140	1,209
Renter Occupied Housing Units	275	924	1,272	1,644
Median Age	33.1	34.1	34.3	35.4

Trends: 2024-2029 Annual Rate	Area	State	National
Population	3.17%	0.33%	0.38%
Households	3.42%	0.48%	0.64%
Families	3.02%	0.34%	0.56%
Owner HHs	1.18%	0.58%	0.97%
Median Household Income	1.13%	2.74%	2.95%

Households by Income	2024		2029	
	Number	Percent	Number	Percent
<\$15,000	42	1.7%	42	1.5%
\$15,000 - \$24,999	47	1.9%	40	1.4%
\$25,000 - \$34,999	50	2.1%	41	1.4%
\$35,000 - \$49,999	135	5.6%	133	4.7%
\$50,000 - \$74,999	308	12.8%	314	11.0%
\$75,000 - \$99,999	267	11.1%	279	9.8%
\$100,000 - \$149,999	681	28.2%	876	30.7%
\$150,000 - \$199,999	378	15.7%	458	16.1%
\$200,000+	504	20.9%	671	23.5%

Median Household Income	\$120,172	\$127,136
Average Household Income	\$152,759	\$168,233
Per Capita Income	\$61,556	\$68,626



Demographics Map

