

FOR LEASE | OFFICE / RETAIL / INDUSTRIAL

Metro 94 Business Center

425 - 475 Etna Street, Saint Paul, Minnesota 55106



Metro-94 is conveniently located along Interstate-94 and Highway 10 in Saint Paul, Minnesota. The total square footage of the four buildings is 105,000 on 7.8 acres. The property is leased to diverse array of organizations. The new Gold-line Rapid Bus Transit has an Etna Street station, improving public transportation options for tenants, employees and patrons.

Property Features

- Flexible loading with a combination of dock doors and drive-in doors
- Ample parking - 425 spaces
- Available spaces from 800 - 17,000 SF



\$6.72 psf estimated Tax & CAM (2025)



Comcast & CenturyLink - with fiber options



12' clear height

Contact Us

ERIC DUEHOLM

Partner



651.621.2550

eric@terracegroupllc.com

BEN BRUNO

Brokerage Services



651.621.2563

ben@terracegroupllc.com

TONY ROSSATO

Brokerage Services



651.621.2507

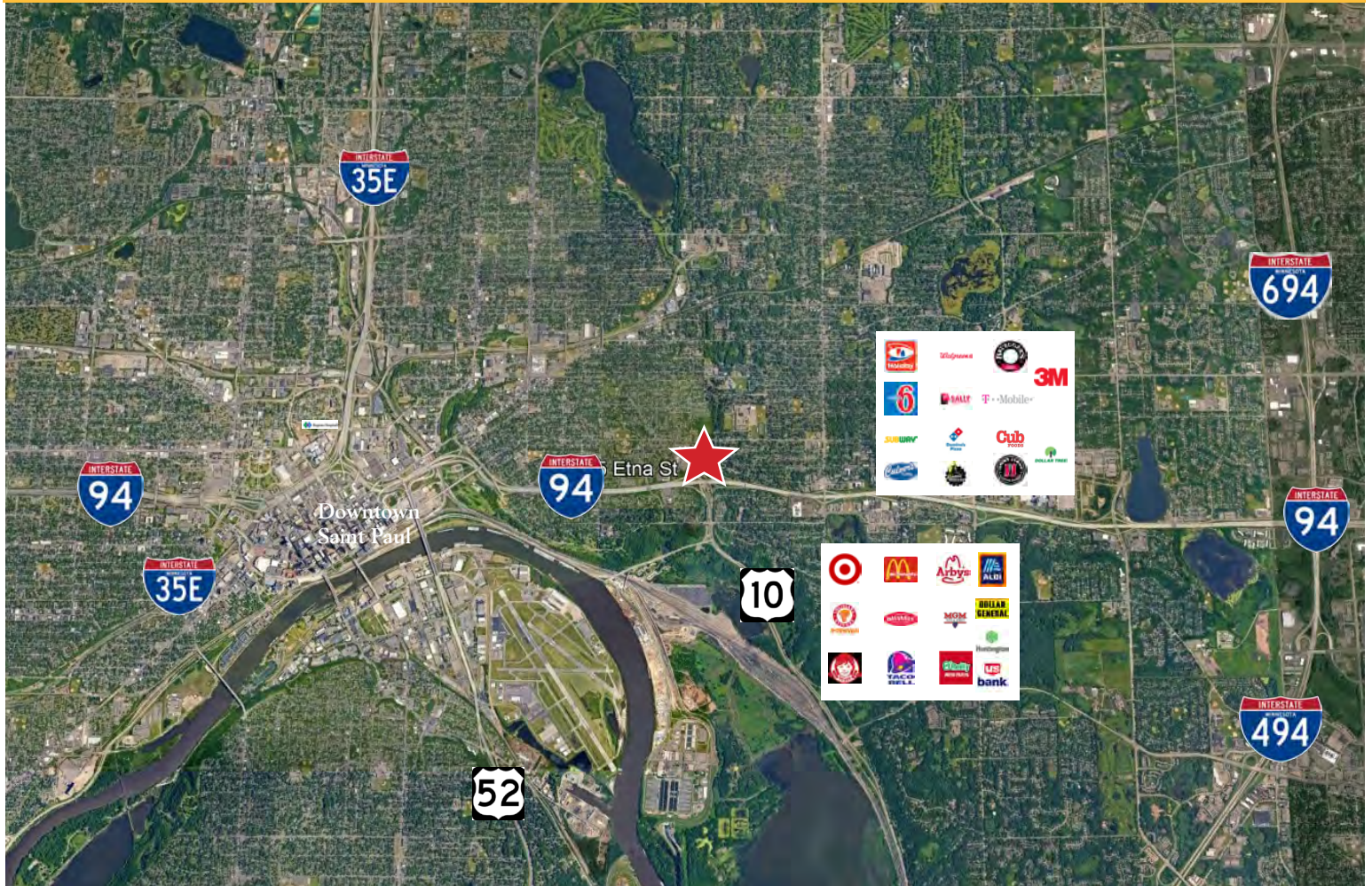
tony@terracegroupllc.com

Full Property Information at:
metro-94.com

FOR LEASE | OFFICE / RETAIL / INDUSTRIAL

Metro 94 Business Center

425 - 475 Etna Street, Saint Paul, Minnesota 55106



Destinations

Downtown Saint Paul
MSP International Airport
Downtown Minneapolis

Drive Time

8 minutes
17 minutes
20 minutes



ERIC DUEHOLM

Partner

651.621.2550

eric@terracegrouppllc.com

BEN BRUNO

Brokerage Services

651.621.2563

ben@terracegrouppllc.com

TONY ROSSATO

Brokerage Services

651.621.2507

tony@terracegrouppllc.com

Full Property Information at:
metro-94.com

FOR LEASE | OFFICE / RETAIL / INDUSTRIAL
Metro 94 Business Center
425 - 475 Etna Street, Saint Paul, Minnesota 55106



ERIC DUEHOLM
Partner

651.621.2550
eric@terracegroupllc.com

BEN BRUNO
Brokerage Services

651.621.2563
ben@terracegroupllc.com

TONY ROSSATO
Brokerage Services

651.621.2507
tony@terracegroupllc.com

Full Property Information at:
metro-94.com

FOR LEASE | OFFICE / RETAIL / INDUSTRIAL

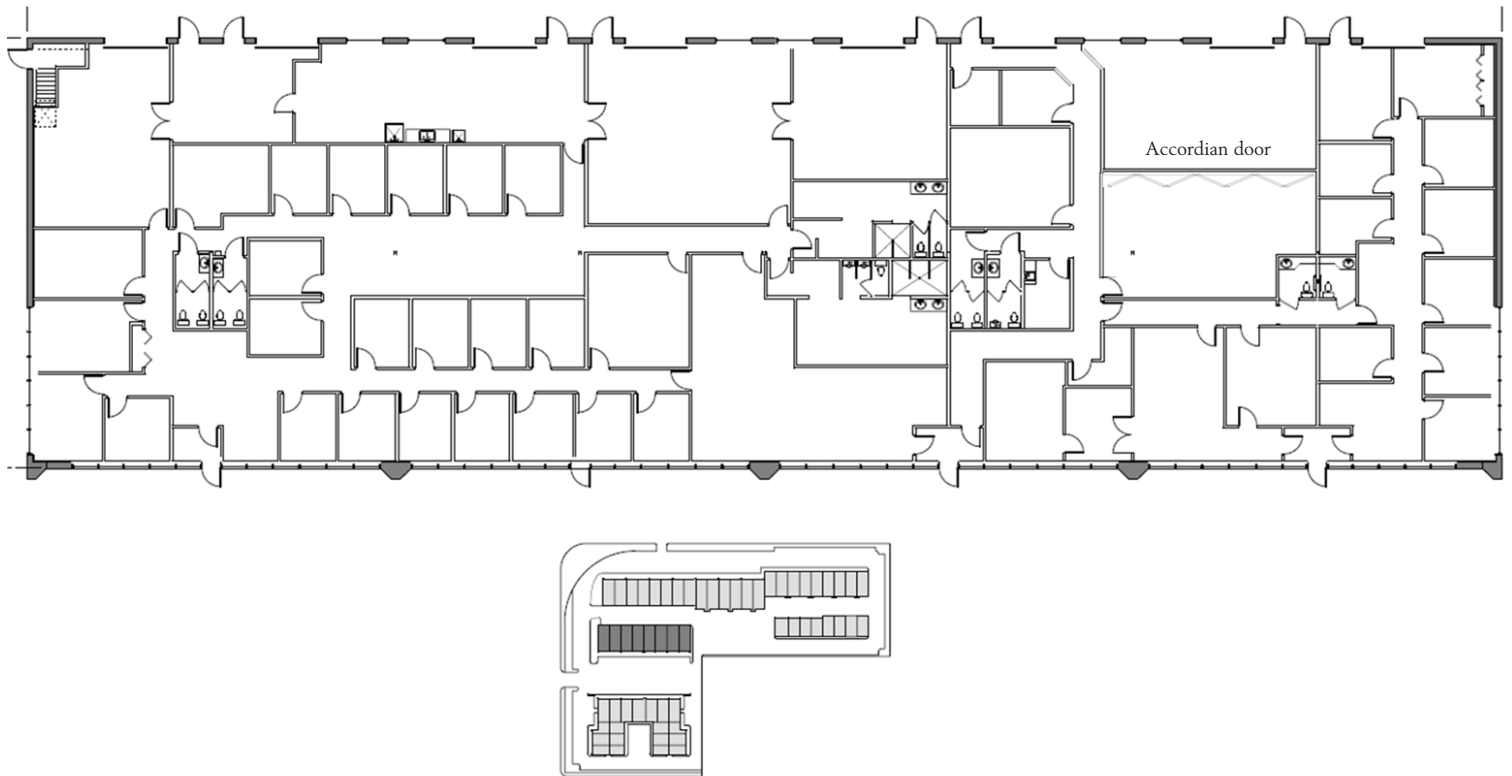
Metro 94 Business Center

425 - 475 Etna Street, Saint Paul, Minnesota 55106



Building 455 | Suites 27 - 34

- 16,720 square feet divisible to 2,500 square feet
- Combination of individual offices and open area
- Numerous drive-in doors
- Warehouse areas with drive-in doors can be expanded
- Accordion door to separate a large meeting room
- Rent is negotiable and is based on lease term and size



Information is deemed reliable; however, no warranty or representation is made as to its accuracy or completeness. Property is subject to price change, prior sale or lease, and withdrawal from the market, all without notice.

ERIC DUEHOLM

Partner

651.621.2550

eric@terracegroupllc.com

BEN BRUNO

Brokerage Services

651.621.2563

ben@terracegroupllc.com

TONY ROSSATO

Brokerage Services

651.621.2507

tony@terracegroupllc.com

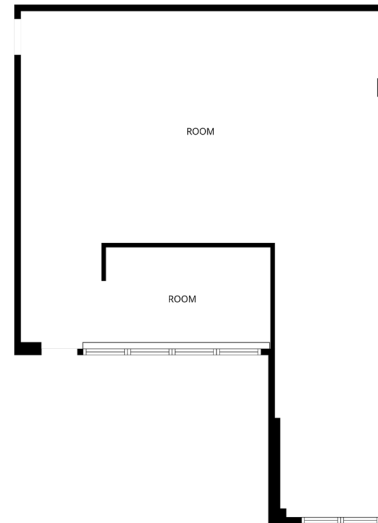
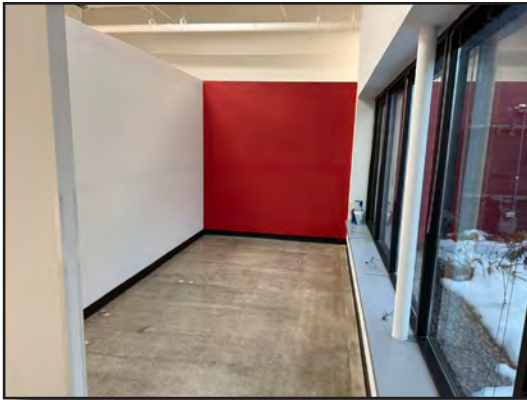
Full Property Information at:
metro-94.com

FOR LEASE | OFFICE / RETAIL / INDUSTRIAL
Metro 94 Business Center
425 - 475 Etna Street, Saint Paul, Minnesota 55106



Building 475 | Suite 25

- 1,080 square feet
- Polished concrete floor
- White painted decking
- LED lighting
- Estimated as-is monthly gross rent is \$1,685



ERIC DUEHOLM
Partner

651.621.2550
eric@terracegroupllc.com

BEN BRUNO
Brokerage Services

651.621.2563
ben@terracegroupllc.com

TONY ROSSATO
Brokerage Services

651.621.2507
tony@terracegroupllc.com

Full Property Information at:
metro-94.com