

Great location near
Integrus Baptist at NW
Expressway and
Hefner Parkway

For Lease: 3617 NW 58th St Oklahoma City, OK 73112

Available: :: 1,044 sf Available

Highlights: :: Immediately Available
:: At Hefner Parkway & NW
Expressway
:: Easy Access to I-44
:: 8,482 total sf
:: Close to Integrus Baptist
:: Located in High Traffic Medical Area

Lease Rate: :: \$ 17.00 psf



For More Information:

Malek Massad
President
405.922.5464
Malek.Massad@Skybridgellc.com

The Information above has been obtained from sources believed to be reliable. While we do not doubt its accuracy, we have not verified if and make no guarantee, warranty or representation about it. It is your responsibility to independently confirm its accuracy and completeness.



Great location near
Integrus Baptist at NW
Expressway and
Hefner Parkway

Area Features

Integrus Baptist Hospital

Deaconess Hospital Complex

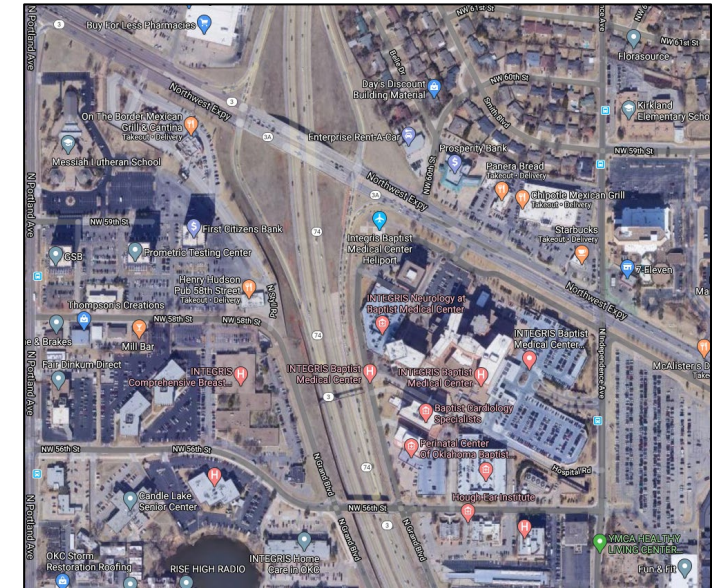
Multiple medical office complexes

Lake Hefner

Access to I-44 (5 minutes)

Access to I-40 (9 minutes)

Access to Kilpatrick Turnpike (6 minutes)



For More Information:

Malek Massad
President
405.922.5464
Malek.Massad@Skybridgellc.com

The Information above has been obtained from sources believed to be reliable. While we do not doubt its accuracy, we have not verified it and make no guarantee, warranty or representation about it. It is your responsibility to independently confirm its accuracy and completeness.

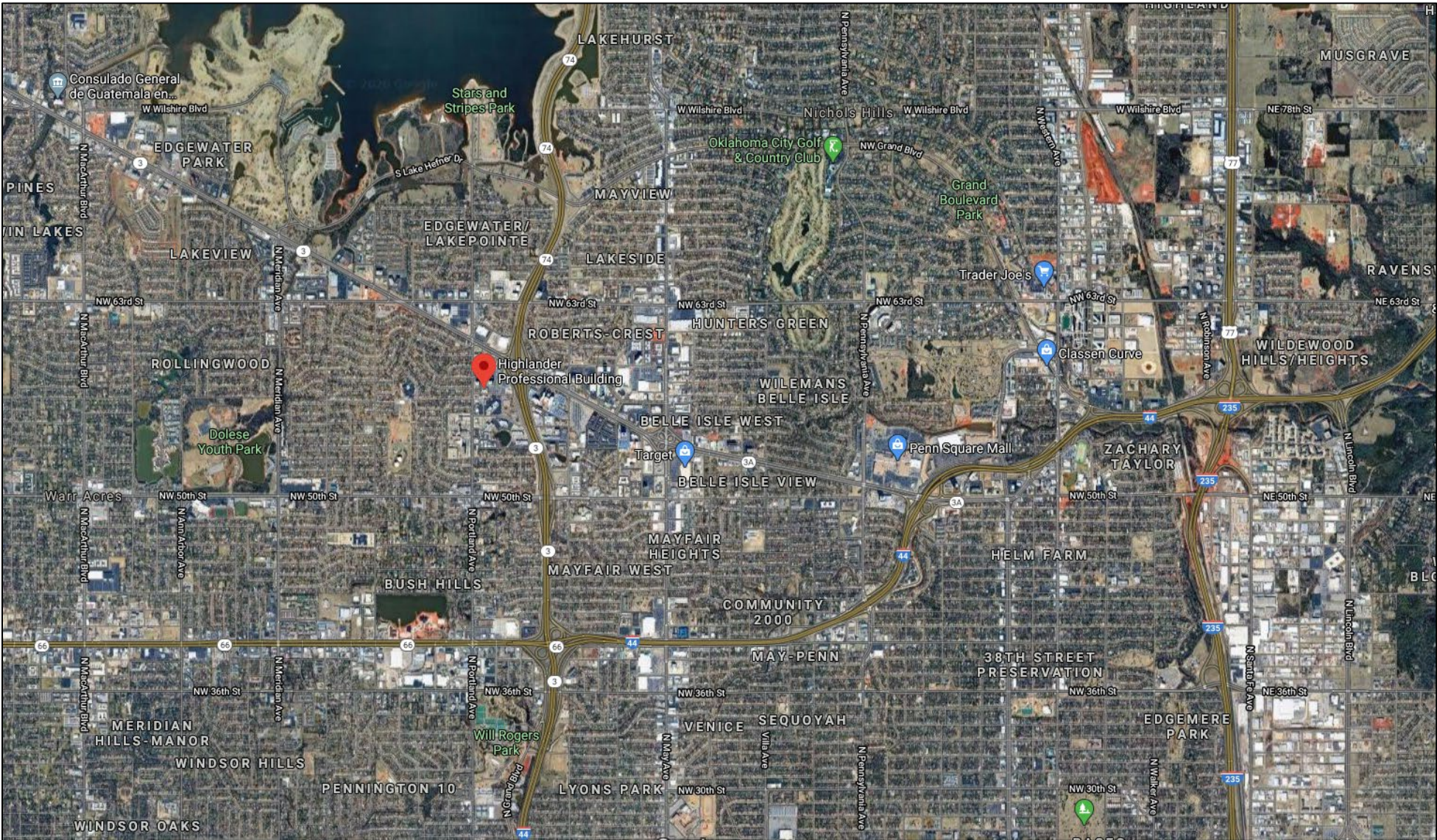


Floor Plan



SKYBRIDGE
REAL ESTATE

Great location near
Integris Baptist at NW
Expressway and
Hefner Parkway



For More Information:

Malek Massad
President
405.922.5464
Malek.Massad@Skybridgellc.com

The Information above has been obtained from sources believed to be reliable. While we do not doubt its accuracy, we have not verified if and make no guarantee, warranty or representation about it. It is your responsibility to independently confirm its accuracy and completeness.

