

# 144 SOUTH WABASH AVENUE

loop / chicago, il

 MID-AMERICA<sup>®</sup> URBAN

AVAILABLE IMMEDIATELY



# 144 SOUTH WABASH AVENUE

loop / chicago, il

## ADDRESS

NWC of Wabash and Adams  
144 S Wabash Avenue  
Chicago, Illinois

## AVAILABILITY

±4,860 SF - Total  
Ground Floor: ±2,900 SF  
Mezzanine: ±660 SF  
Basement: ±1,300 SF

Available January 2024

## DEMOGRAPHICS

	.5M	1M	1.5M
POPULATION	16,607	88,936	168,169
HOUSEHOLDS	8,392	54,784	100,594
AVG HOUSEHOLD INCOME	\$194,383	\$179,804	\$184,067
DAYTIME POPULATION	263,285	509,126	640,701

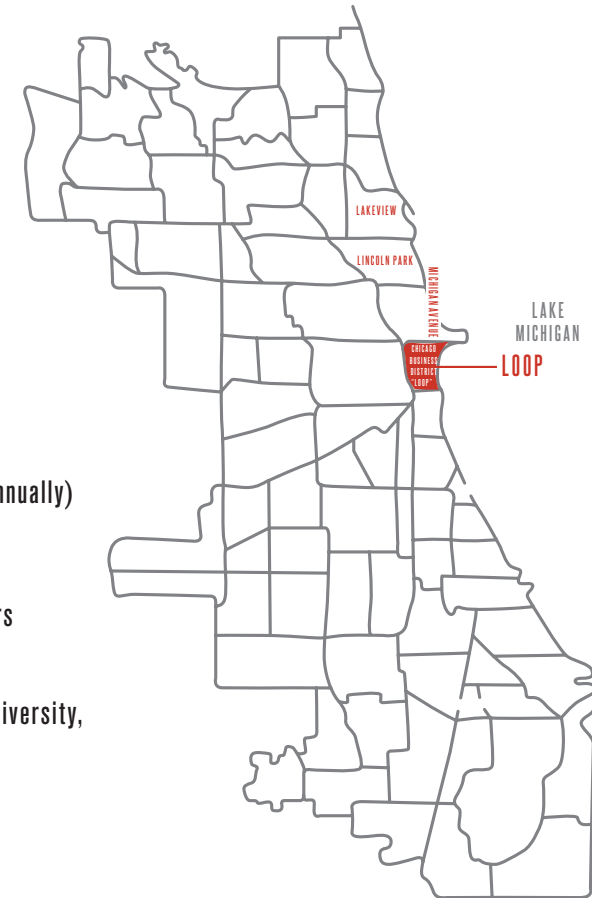
## NEIGHBORING RETAILERS



## FEATURES

- Built-out former McDonald's for lease
- Located directly outside of the Adams/Wabash CTA Station (2.087M riders annually)
- One block west of Michigan Avenue
- Within a quarter mile of the iconic Grant and Millennium Parks (±25M visitors annually)
- Amidst Chicago's urban collegiate campuses (DePaul University, Roosevelt University, School of the Art Institute of Chicago, The John Marshall Law School)

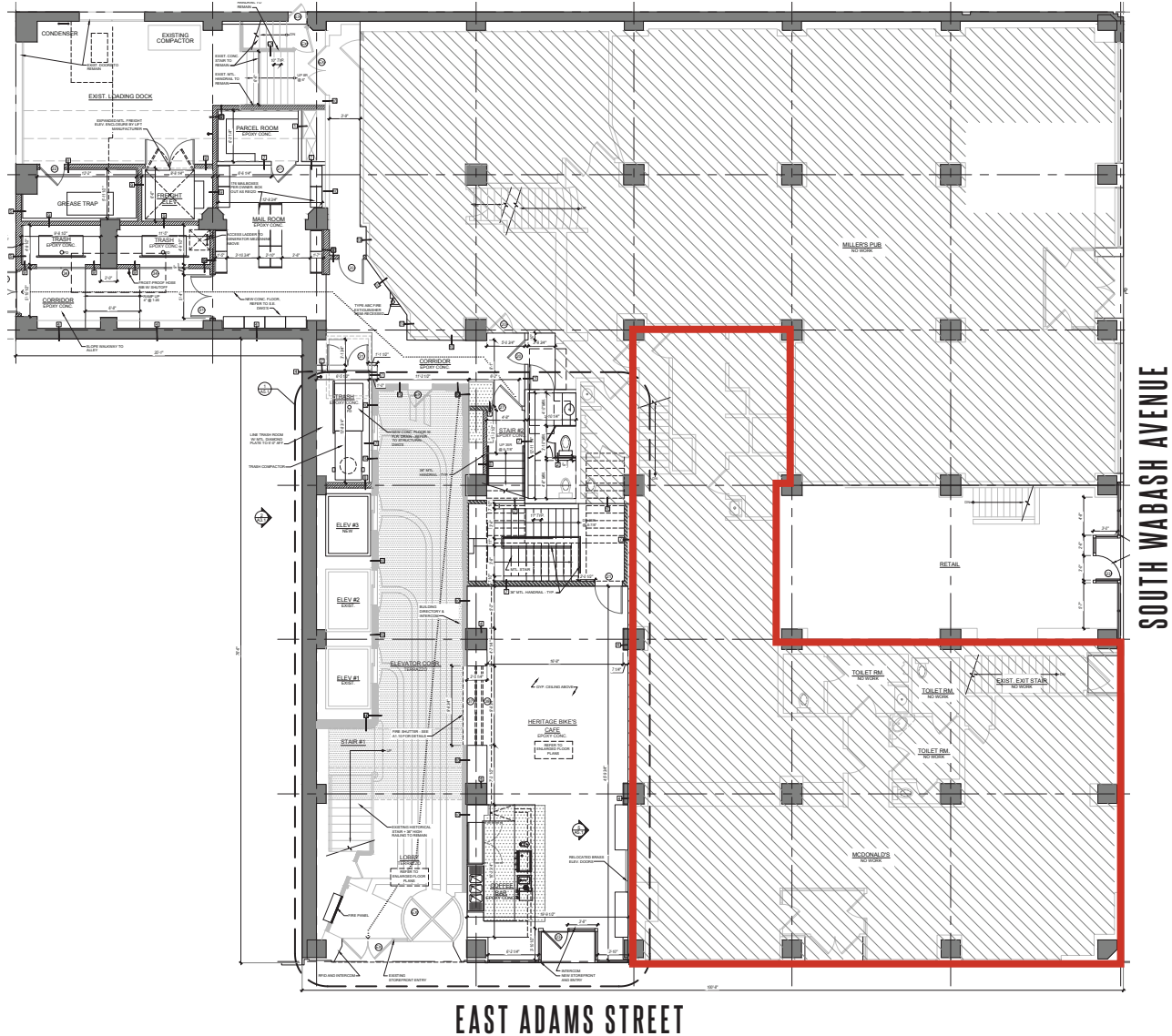
## SPACE DETAILS



# 144 SOUTH WABASH AVENUE

loop / chicago, il

## GROUND FLOOR PLAN



### SPACE DETAILS

±2,900 SF



# 144 SOUTH WABASH AVENUE

loop / chicago, il

## MEZZANINE FLOOR PLAN



SPACE DETAILS

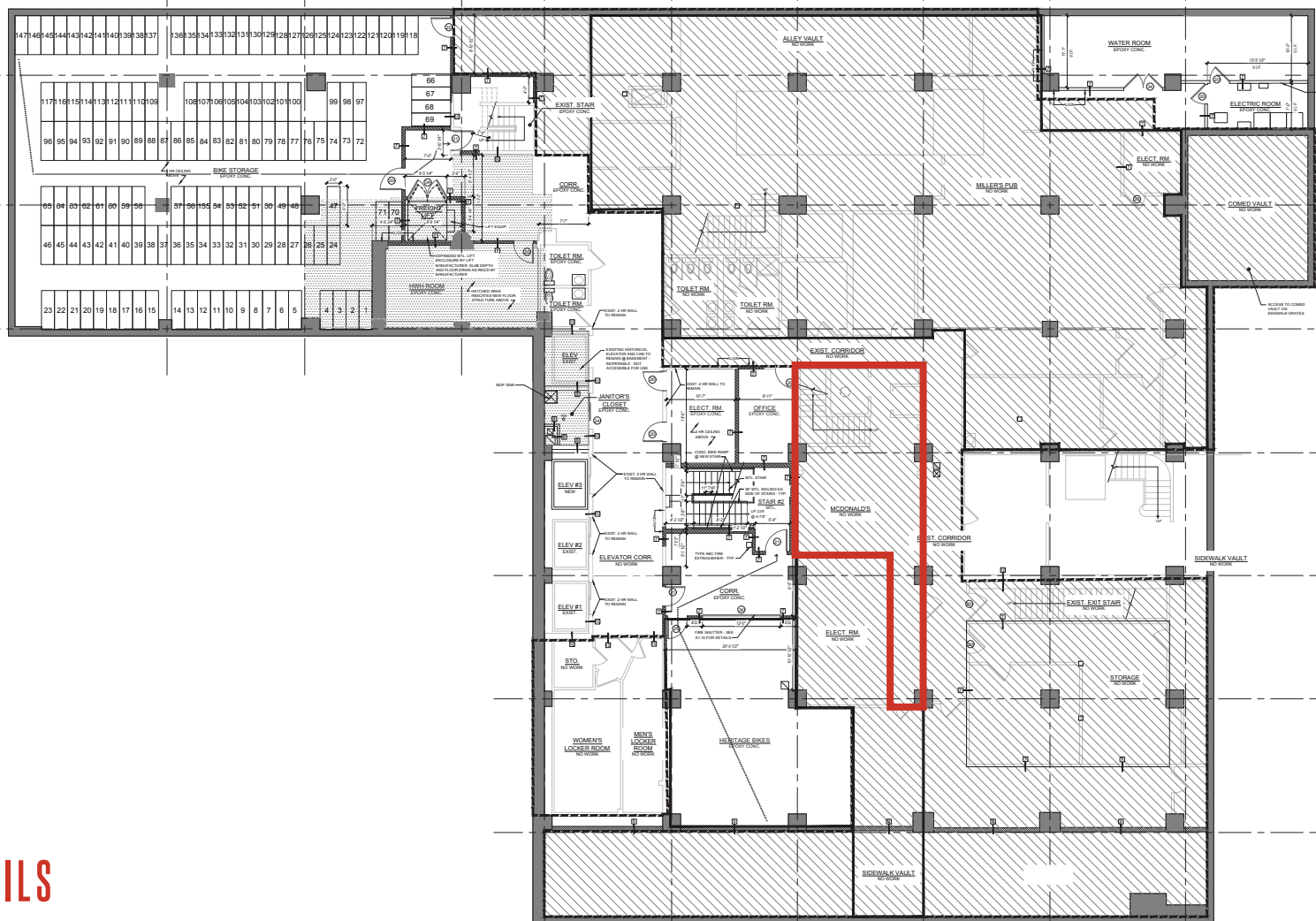
±660 SF



# 144 SOUTH WABASH AVENUE

loop / chicago, il

## BASEMENT FLOOR PLAN



### SPACE DETAILS

±1,300 SF

EAST ADAMS STREET

SOUTH WABASH AVENUE



# 144 SOUTH WABASH AVENUE

loop / chicago, il

## TRADE AREA MAP



let's  
talk. **BIG**  
**IDEAS?**

**PAUL BRYANT**

Mid-America Real Estate Corporation  
630.954.7354  
PBryant@MidAmericaGrp.com

**WESTIN KANE**

Mid-America Real Estate Corporation  
630.954.7447  
WKane@MidAmericaGrp.com

**RYAN HICKS**

Mid-America Real Estate Corporation  
630.954.7326  
RHicks@MidAmericaGrp.com



**MID-AMERICA<sup>®</sup> URBAN**