

40.6255506° -111.8573911°



PROPERTY SUMMARY

6 AT UNION PARK / 6955 UNION PARK AVE.
AMENITIES: Shower Facility, Outdoor Seating
4 / 1000 PARKING RATIO
ON-SITE STORAGE



UNION PARK

BE LIFTED UP

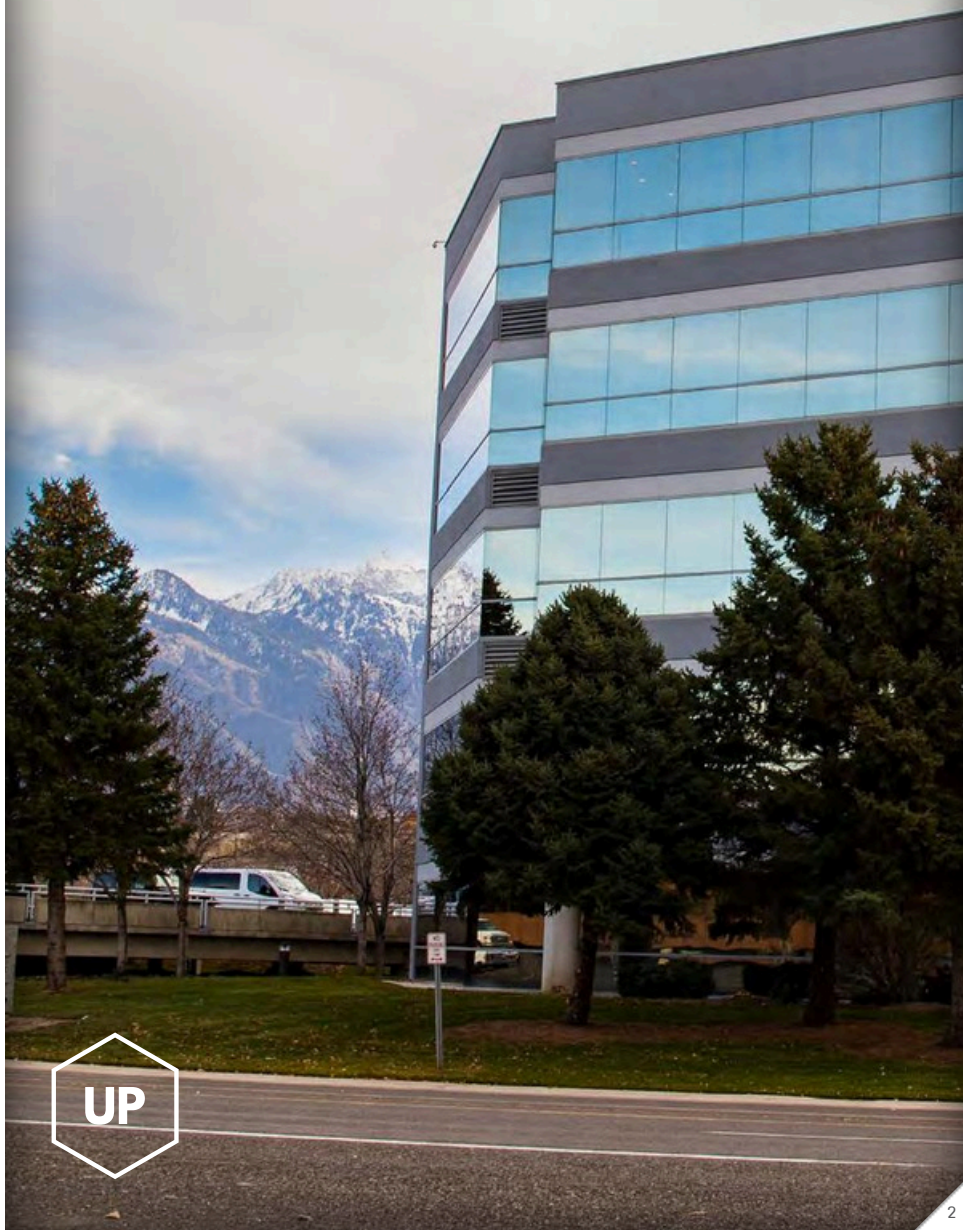
PRESENTED BY



natalie@futrcommercial.com | **NATALIE JONSSON**
andy@futrcommercial.com | **ANDY GUNTHER**

www.futrcommercial.com | 801.858.0555

UNIMPEDED VIEWS OF THE VALLEY & WASATCH MOUNTAINS



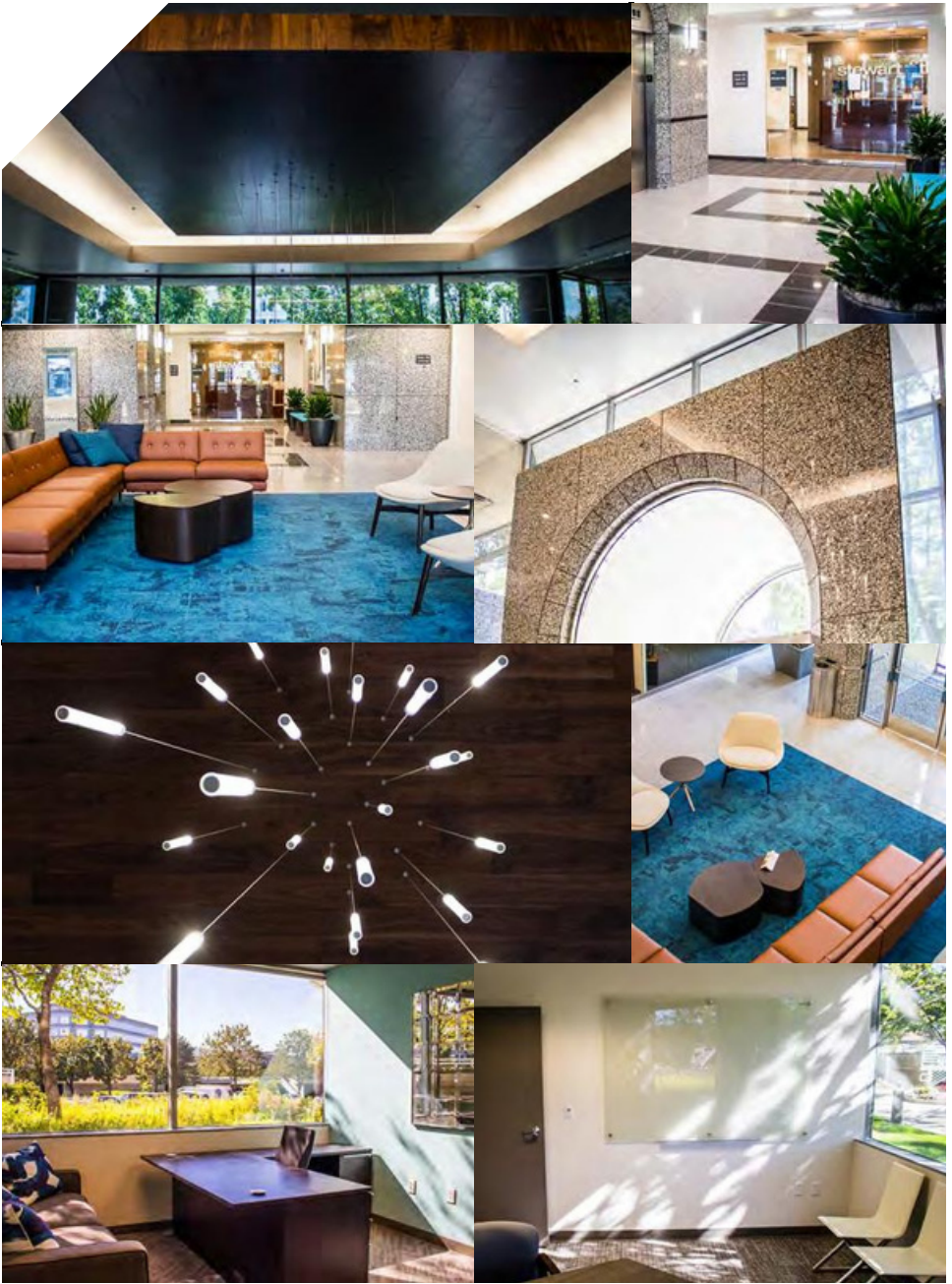


UNION PARK

BE LIFTED UP

UTAH'S PREMIER SUBURBAN OFFICE PARK, LOCATED IN THE HEART OF UTAH'S SCENIC SALT LAKE VALLEY.

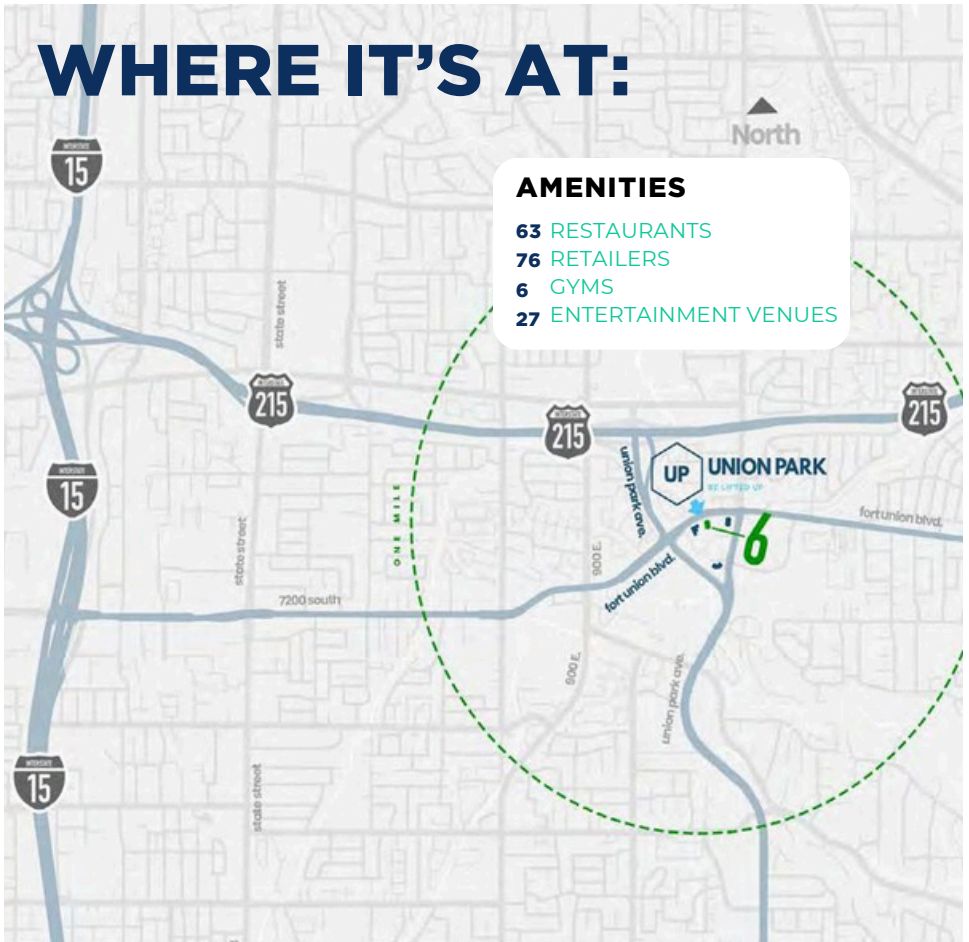
Union Park offers a unique park-like atmosphere with an abundance of landscaped open spaces. Fast, easy access to local freeways, restaurants, and retail shopping. Ideal for companies looking to recruit talent or offer services to the entire valley. Covered parking included at no cost.



- One of the most desirable spots for work, play and living in the Intermountain West. Boasting fantastic views from nearly every suite.
-

GALLERY

WHERE IT'S AT:



AMENITIES

- 63 RESTAURANTS
- 76 RETAILERS
- 6 GYMS
- 27 ENTERTAINMENT VENUES

Union Park Tenant Favorites:

- Chipotle
- In-N-Out
- **Costa Vida**
- Noodles & Company
- Chick-Fil-A
- Cafe Rio
- Zao's Cafe
- Cafe Zuppas
- Jersey Mike's
- **Itto Sushi**
- The Pie Pizzeria
- Jimmy Johns
- 5 Guys
- **Trader Joes**
- Walmart
- Harmons
- Whole Foods
- Home Depot
- Sierra Trading
- Old Navy
- **Sam's Club**

UP

AREA MAP

6 at UNION PARK PROPERTY FEATURES:

- **ON-SITE PROPERTY MANAGEMENT**
- **COVERED PARKING**
- **24 HR SECURITY**
- **BY MAJOR RETAIL, DINING & LODGING**
- **ONE OF UTAH'S TOP COMMERCIAL HUBS**
- **1/4 MILE TO I-215**
- **MULTIPLE ENTRY POINTS**
- **DEDICATED TRAFFIC LIGHT FOR ACCESS**
- **DAILY TRAFFIC: 10,300 CARS**
- **RECENT CAPITAL UPGRADES**
- **EV CHARGING STATIONS**
- **FIBER OPTIC NETWORK AVAILABLE**

6 at Union Park is a 4-story timeless granite and glass structure located in the heart of Utah's scenic Salt Lake Valley. This Class-A facility features exclusive executive suites, unimpeded views of the valley and Wasatch Mountains, a 2-story granite and glass lobby, plentiful outdoor parking and much more.

**CLASS A
FINISHES**

**ON-SITE
PROPERTY MANAGEMENT**

- **AFFORDABLE RATES**
- **GENEROUS TI ALLOWANCE AVAILABLE**

40.625506° -111.857391°



UNION PARK

BE LIFTED UP

AVAILABILITY

6 at UNION PARK, SUITE 140

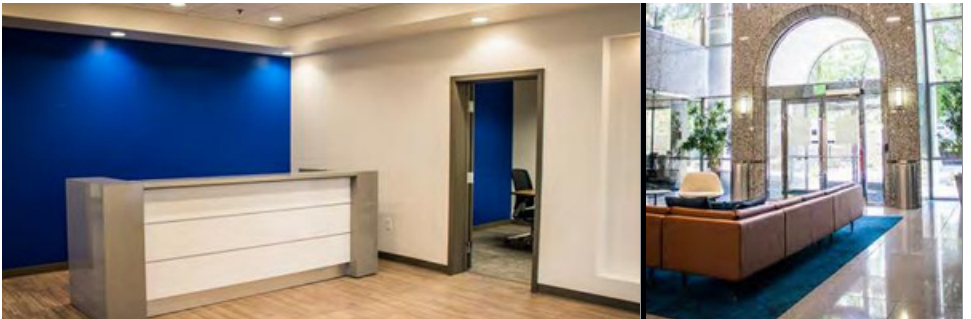
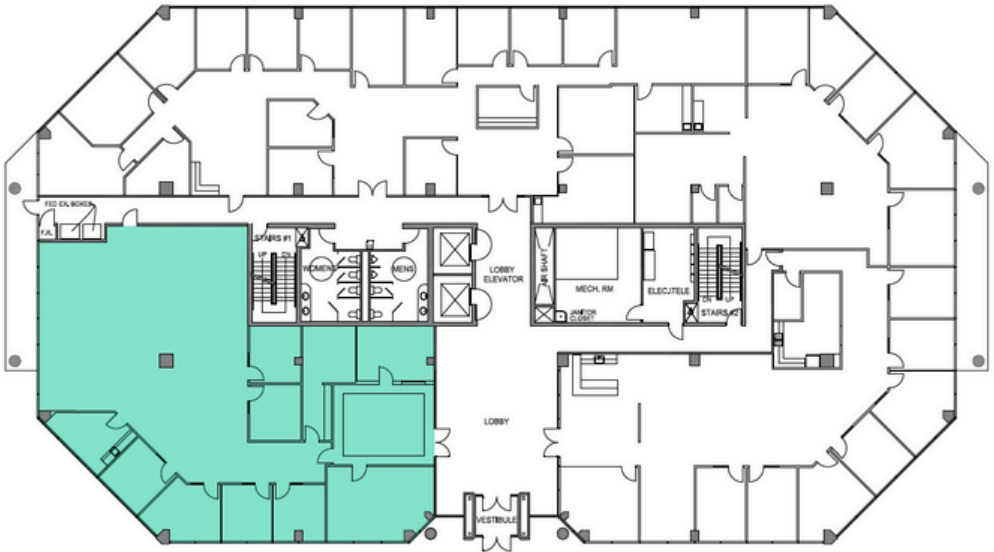
LOCATION 6955 UNION PARK AVE. 84047

SF / COST 5,216 / \$27.50 PSF

STATUS AVAILABLE IMMEDIATELY

LPM + **STUDIO** FREE PODCAST STUDIO AMENITY

SPACE PLAN



PRESENTED BY



natalie@futrcommercial.com
andy@futrcommercial.com

NATALIE JONSSON
ANDY GUNTHER

www.futrcommercial.com | 801.858.0555

AVAILABILITY

6 at UNION PARK, SUITE 140



LOCATION 6955 UNION PARK AVE. 84047

SF / COST 5,216 / \$27.50 PSF

STATUS AVAILABLE IMMEDIATELY



AVAILABILITY

6 at UNION PARK, SUITE 160

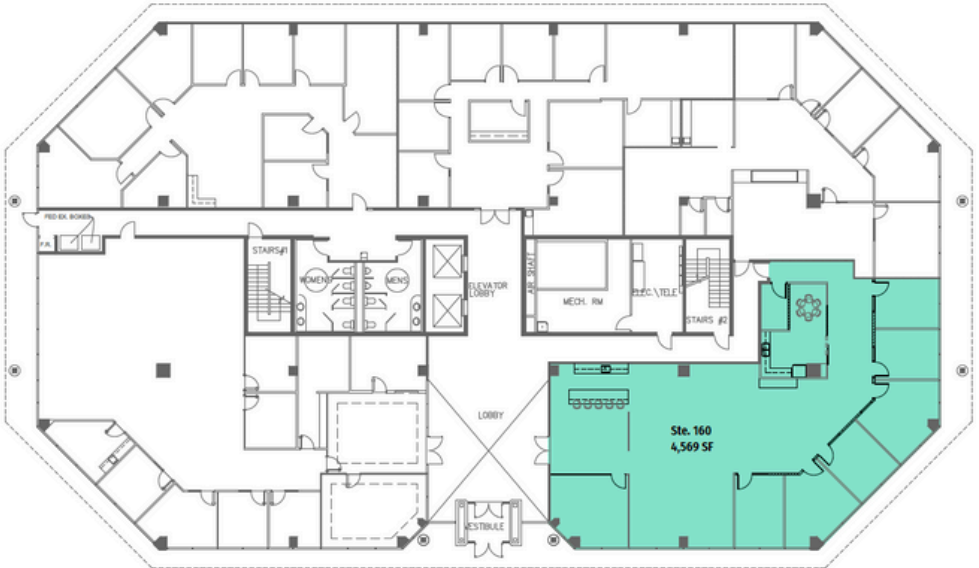
LOCATION 6955 UNION PARK AVE. 84047

SF / COST 4,569 / \$27.50 PSF

STATUS AVAILABLE IMMEDIATELY

LPM+ STUDIO FREE PODCAST STUDIO AMENITY

SPACE PLAN



PRESENTED BY



natalie@futrcommercial.com
andy@futrcommercial.com

NATALIE JONSSON
ANDY GUNTHER

www.futrcommercial.com | 801.858.0555

AVAILABILITY

6 at UNION PARK, SUITE 160



LOCATION 6955 UNION PARK AVE. 84047

SF / COST 4,569 / \$27.50 PSF

STATUS AVAILABLE IMMEDIATELY



AVAILABILITY

6 at UNION PARK, SUITE 260

LOCATION 6955 UNION PARK AVE. 84047

SF / COST 1,809 / \$27.50 PSF

STATUS AVAILABLE IMMEDIATELY

LPM+  STUDIO FREE PODCAST STUDIO AMENITY

SPACE PLAN



PRESENTED BY



natalie@futrcommercial.com
andy@futrcommercial.com

NATALIE JONSSON
ANDY GUNTHER

www.futrcommercial.com | 801.858.0555

AVAILABILITY

6 at UNION PARK, SUITE 260

LOCATION 6955 UNION PARK AVE. 84047

SF / COST 1,809 / \$27.50 PSF

STATUS SPEC SPACES, EST. COMPLETION DATE - JULY 1, 2022

6



FUTR.

AVAILABILITY

6 at UNION PARK, SUITE 350

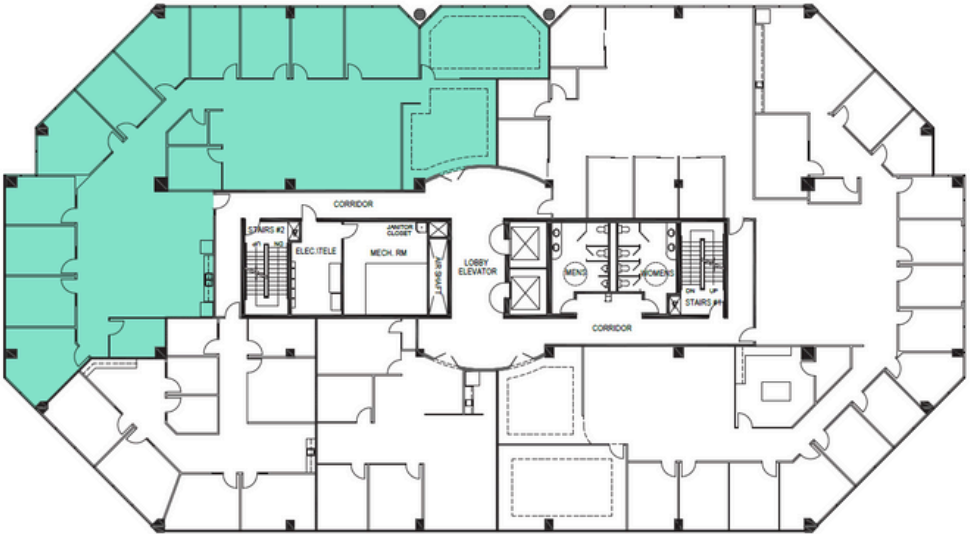
LOCATION 6955 UNION PARK AVE. 84047

SF / COST 6,620 / \$27.50 PSF

STATUS AVAILABLE IMMEDIATELY

LPM + STUDIO FREE PODCAST STUDIO AMENITY

SPACE PLAN



PRESENTED BY



natalie@futrcommercial.com
andy@futrcommercial.com

NATALIE JONSSON
ANDY GUNTHER

www.futrcommercial.com | 801.858.0555

AVAILABILITY

6 at UNION PARK, SUITE 350

LOCATION 6955 UNION PARK AVE. 84047

SF / COST 6,620 / \$27.50 PSF

STATUS AVAILABLE IMMEDIATELY

6



FUTR

PROXIMITY MAP



10
MINS

DOWNTOWN
SALT LAKE CITY



15
MINS

SLC INT. AIRPORT



10
MINS

FROM 50% SLC'S
POPULATION



18
MINS

PARK CITY EXITS



8
MINS

BIG COTTONWOOD
CANYON



26
MINS

SILICONE
SLOPES LEHI

UP

EASY ACCESS

www.futrcommercial.com | 801.858.0555



NATALIE JONSSON | natalie@futrcommercial.com | 801.560.1217

ANDY GUNTHER | andy@futrcommercial.com | 801.541.6820