



Shops of South Cobb

The Shops of South Cobb presents an exceptional retail opportunity in one of Cobb County's most dynamic commercial corridors. This 8,044 SF shopping center occupies a strategic position just south of the highly-trafficked South Cobb Drive and East West Connector intersection, offering retailers unparalleled visibility and accessibility in a thriving market.

Area	1 MILE	3 MILE	5 MILE
Demographics			
2024 Population	13,376	76,984	203,064
Daytime Population	12,124	87,569	253,875
2024 Households	6,549	34,260	91,031
Household Income	\$174,700	\$164,900	\$134,100

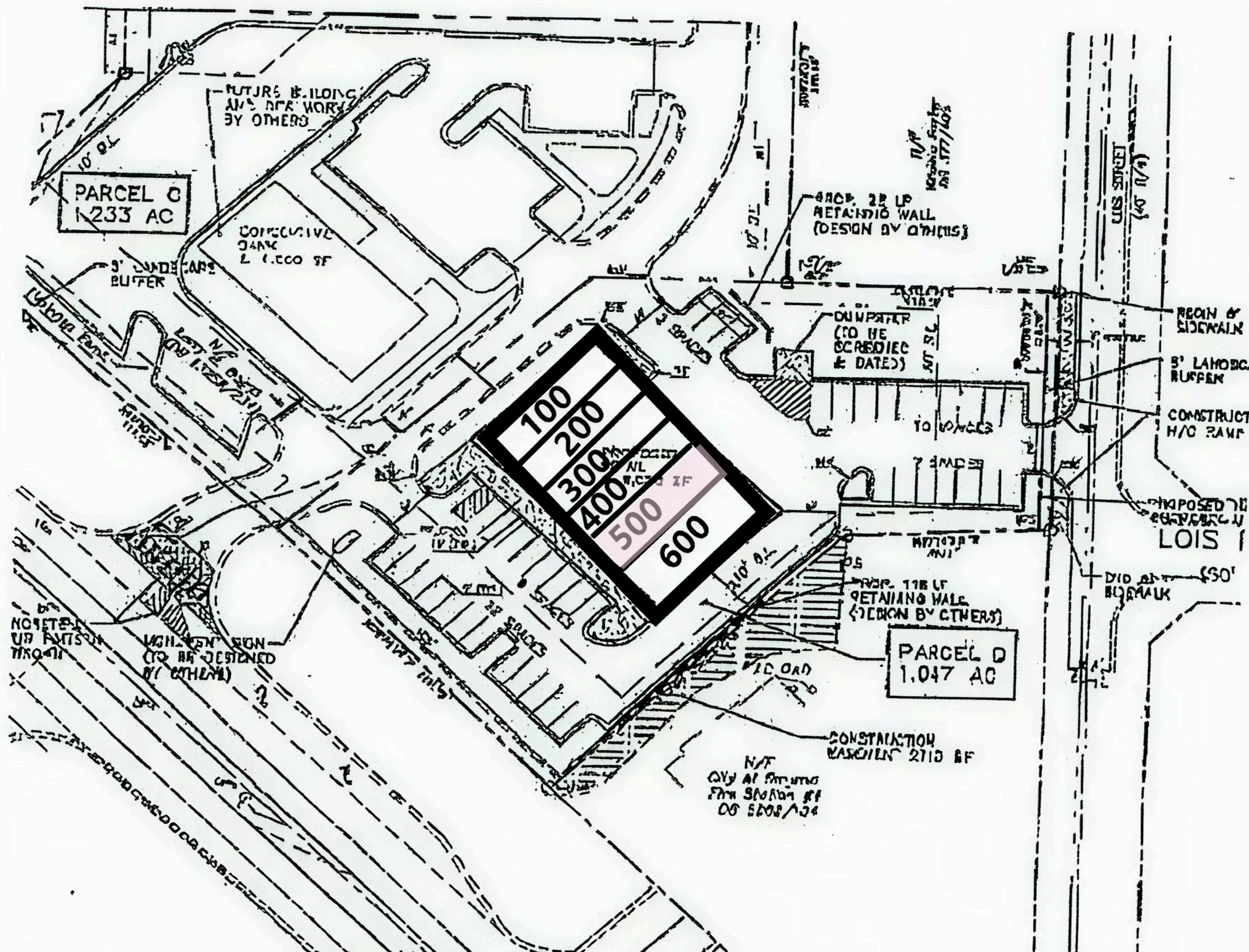


Shops of South Cobb
4585 S Cobb Dr. SE
Smyrna, GA 30080

Allie Hodge Motz
678.501.5342
allie@riverwoodproperties.com

Lexi Parks
770.955.7660
lexi@riverwoodproperties.com

Shops of South Cobb



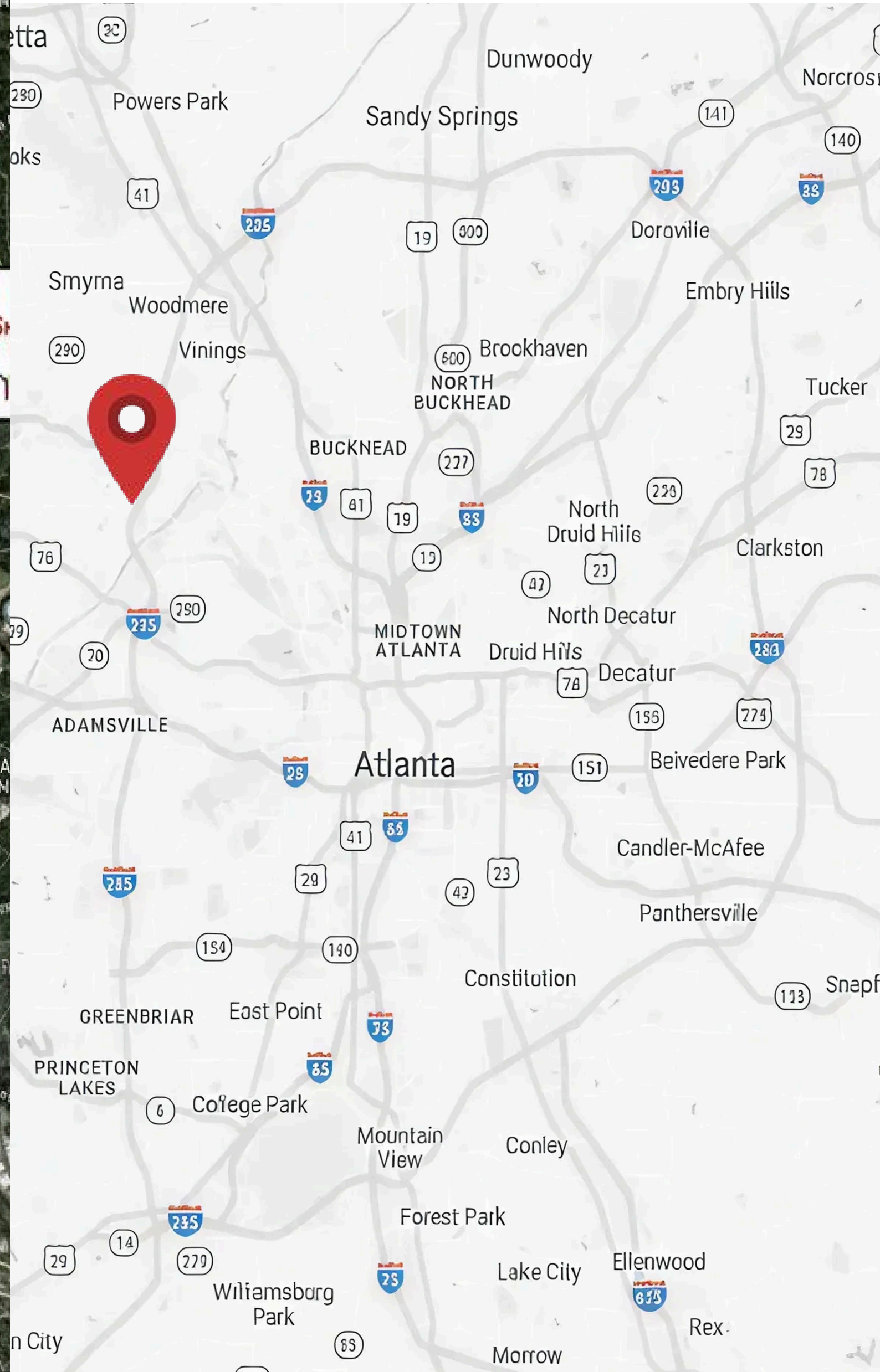
Suite	Tenant	Square Feet
100	Michi Ru Asian Cuisine	1,387
200	Eye Level Learning Center	1,400
300	Vinings Pharmacy	1,750
400	AccuQuest Hearing Centers	1,265
500	Retail Space Available	1,152
600	Jeremiah's Italian Ice	1,090

Strategic Positioning

- Directly across from Sprouts Farmers Market, anchoring a proven retail destination
- Just 0.25 miles from I-285, providing immediate highway access
- Positioned in the heart of South Cobb's established retail corridor

Superior Access & Visibility

- Excellent ingress and egress for maximum customer convenience
- Prominent visibility from South Cobb Drive with substantial road frontage
- High-profile corner location at a major intersection



Traffic & Exposure With over 30,000 vehicles per day passing the property, The Shops of South Cobb delivers exceptional brand exposure and customer capture potential. This consistent, high-volume traffic creates an ideal environment for retail success.

The Shops of South Cobb combines everything retailers need: prime location, exceptional visibility, strong traffic, and easy access. This is a proven retail corridor where businesses thrive.