

**Now For Sale**

**1717**

**S Vermont Ave**

**Los Angeles, CA 90006**

**Forty Units Motel  
Freestanding Building  
with Parkings**

**Kotai Realty**

Curt Wang

626-643-8181

wangcurt@yahoo.com

Rebecca Lin

626-988-7171

rebeccalin610@gmail.com



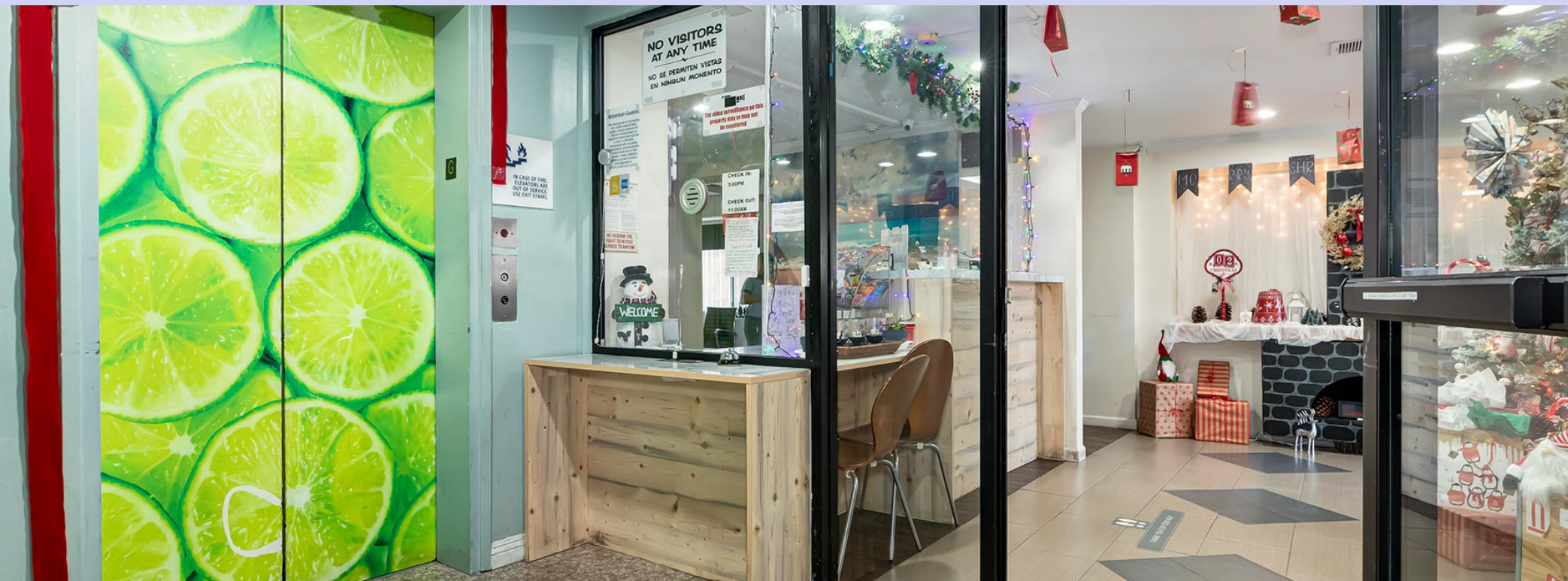


# OFFERING OVERVIEW

Kotai Realty is pleased to present this investment opportunity to acquire.  
1717 S Vermont Ave. Los Angeles  
40 units motel with 22 parkings

This 40 units motel is located within the R-2 neighborhood conveniently behind Vermont Ave. The neighborhood has been using this motel since 1987. Before Covid this motel has an occupancy of 180% per year.

This motel does not provide breakfast. However it provides its own washer and dryer facility.





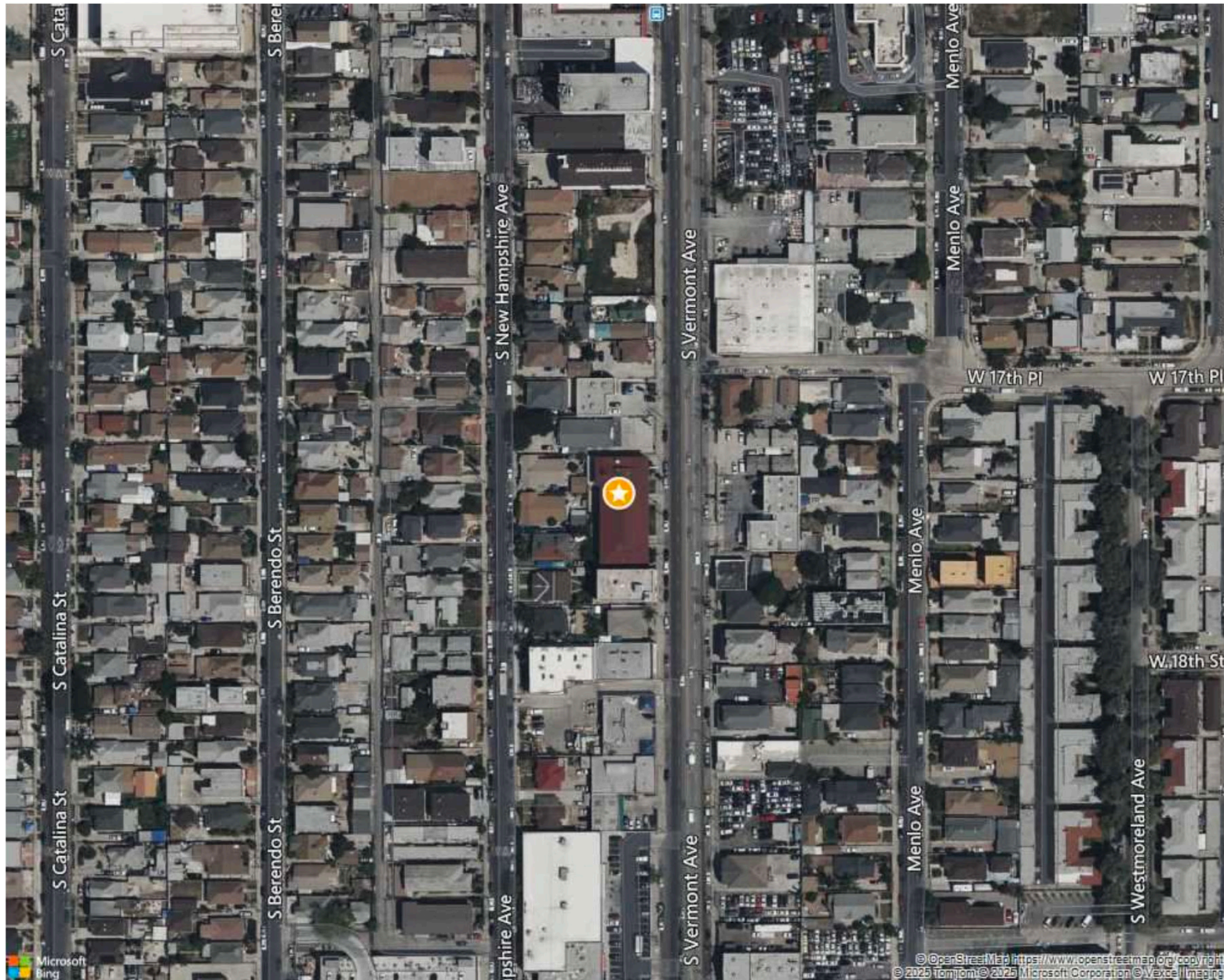


## Property Overview

Address:	1717 S Vermont Ave. Los Angeles, CA 90006
APN:	5075-016-029
Zoning:	LAC2
Parkings:	2 Handicap parkings and 20 regular parkings
Lot size:	8270 square feet
Use Code:	Hotel
Number of Units:	40. Buyer to verify with the city the number of units. Agent does not guarantee the number of units
Square Feet:	14,744.
Year Built:	1986
Pricing:	\$18,900,000







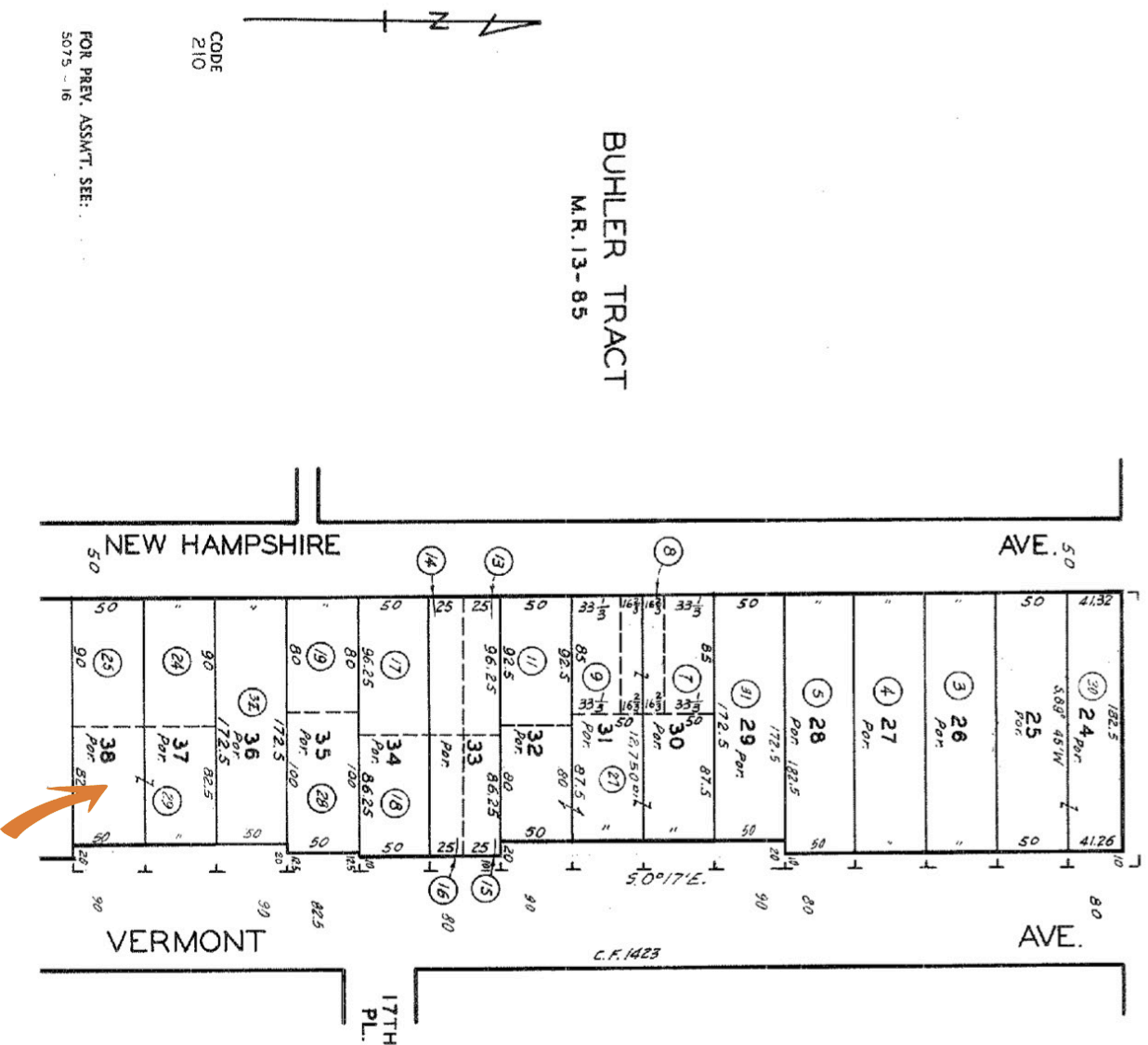
**1717 S VERMONT AVE**  
**LOS ANGELES, CA 90006-4523**

Screen

1996

VENICE<sup>2.5 815</sup> BLVD.

BUHLER TRACT  
M.R. 13-85



FOR PREV. ASSMT. SEE:  
5075 - 16