

SUB-LEASE AVAILABLE

Raymore, Missouri

CONFIDENTIAL // PLEASE DO NOT CONTACT TENANT



FORMER WHATABURGER

1921 W Foxwood Dr Raymore, MO

11050 Roe Avenue, Suite 150
Overland Park, KS 66211
913-379-9900

www.link-advisors.com



**LINK PROPERTY
ADVISORS**

1921 W Foxwood Dr, Raymore, MO

PROPERTY FEATURES



SUBLEASE OPPORTUNITY
Currently operating Whataburger



2ND GEN SPACE
3,746 SF Existing Restaurant Use



STRATEGIC LOCATION
Located in the heart of Raymore's prime retail corridor



FEATURES
Double drive-thru lanes for improved traffic flow



DENSE DEMOGRAPHIC AREA
2nd fastest growing county in 14-County Kansas City Metro



Dining Room

Join prominent national retailers/restaurants:



Demographics



TOTAL POPULATION

1 MILE:	9,638
3 MILE:	48,953
5 MILE:	70,373



DAYTIME POPULATION

1 MILE:	2,498
3 MILE:	13,157
5 MILE:	20,053



AVG HH INCOME

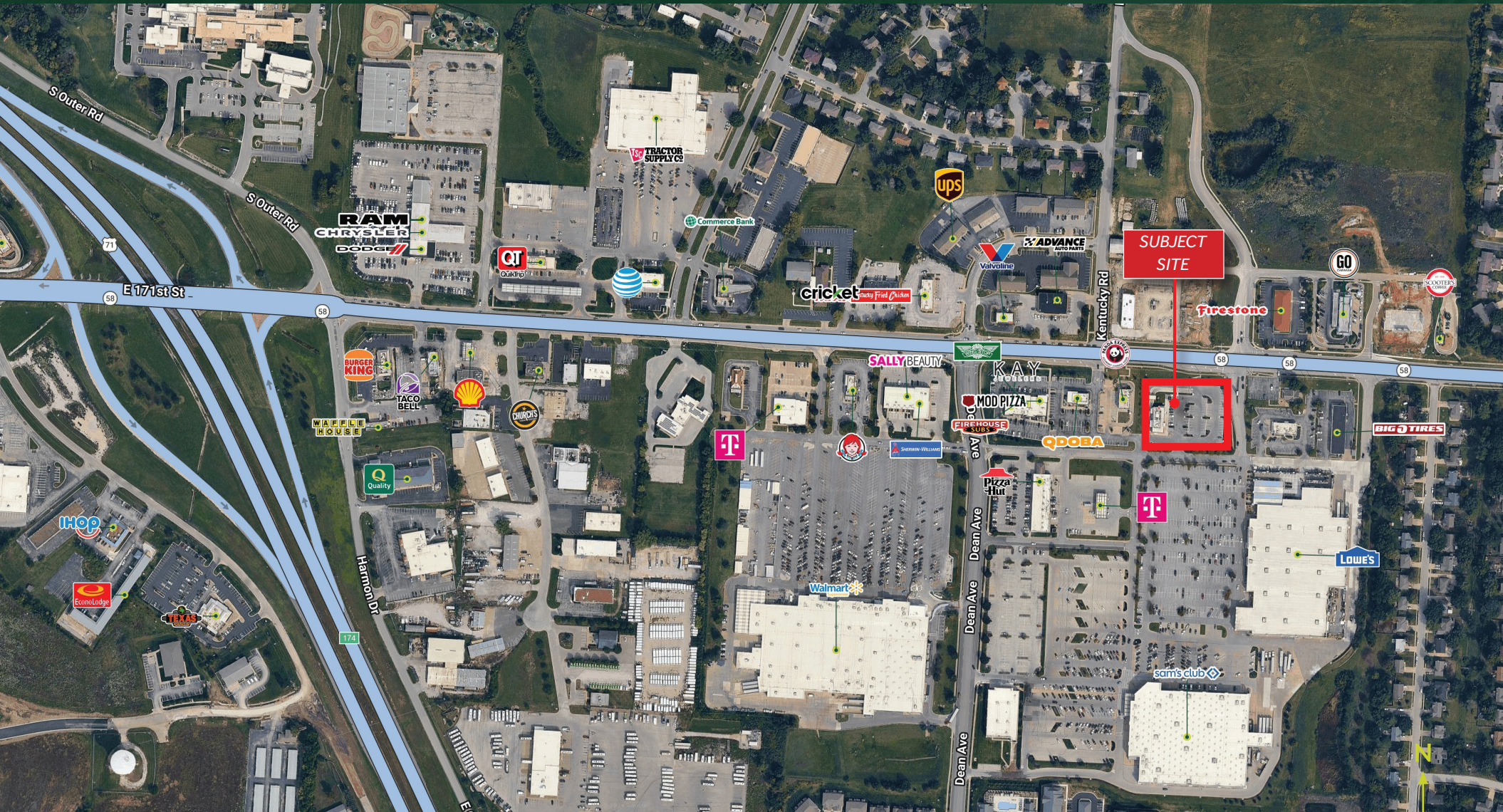
1 MILE:	\$103,429
3 MILE:	\$106,436
5 MILE:	\$105,178

ADAM S. BLUE
(m) 913-709-4852
adam@link-advisors.com



ZOOM AERIAL

1921 W Foxwood Dr, Raymore, MO



ADAM S. BLUE
(m) 913-709-4852
adam@link-advisors.com



MARKET AERIAL

1921 W Foxwood Dr, Raymore, MO



ADAM S. BLUE
(m) 913-709-4852
adam@link-advisors.com

