

Available For Sale  
155 Acres | Shawnee, KS



## K-7 & 43rd Street

Shawnee, Kansas

- Lot Size: 155 Acres (2.63-155 Acres)
- Additional Land: Adjacent 35-112 Acres Available
- Zoned: Agriculture (Anticipated Industrial Zoning)
- Typography: Clear & Graded  
(With the exception of parcels 6 & 7)
- BNSF Rail Line Runs Through Property
- Great Accessibility to K-7
- Excellent Demographics
- Perfect Industrial Development Site

For more information:

**Tom Kennedy, SIOR**

+1 913 890 2003 • [tom@nai-heartland.com](mailto:tom@nai-heartland.com)

**Logan Rose**

+1 913 890 2013 • [lrose@nai-heartland.com](mailto:lrose@nai-heartland.com)



# Available For Sale

## 155 Acres | Shawnee, KS



NO WARRANTY OR REPRESENTATION, EXPRESS OR IMPLIED, IS MADE AS TO THE ACCURACY OF THE INFORMATION CONTAINED HEREIN, AND THE SAME IS SUBMITTED SUBJECT TO ERRORS, OMISSIONS, CHANGE OF PRICE, RENTAL OR OTHER CONDITIONS, PRIOR SALE, LEASE OR FINANCING, OR WITHDRAWAL WITHOUT NOTICE, AND OF ANY SPECIAL LISTING CONDITIONS IMPOSED BY OUR PRINCIPALS NO WARRANTIES OR REPRESENTATIONS ARE MADE AS TO THE CONDITION OF THE PROPERTY OR ANY HAZARDS CONTAINED THEREIN ARE ANY TO BE IMPLIED.

4400 College Boulevard Suite 170  
Overland Park, Kansas 66211  
+1 913 362 1000

[nai-heartland.com](http://nai-heartland.com)

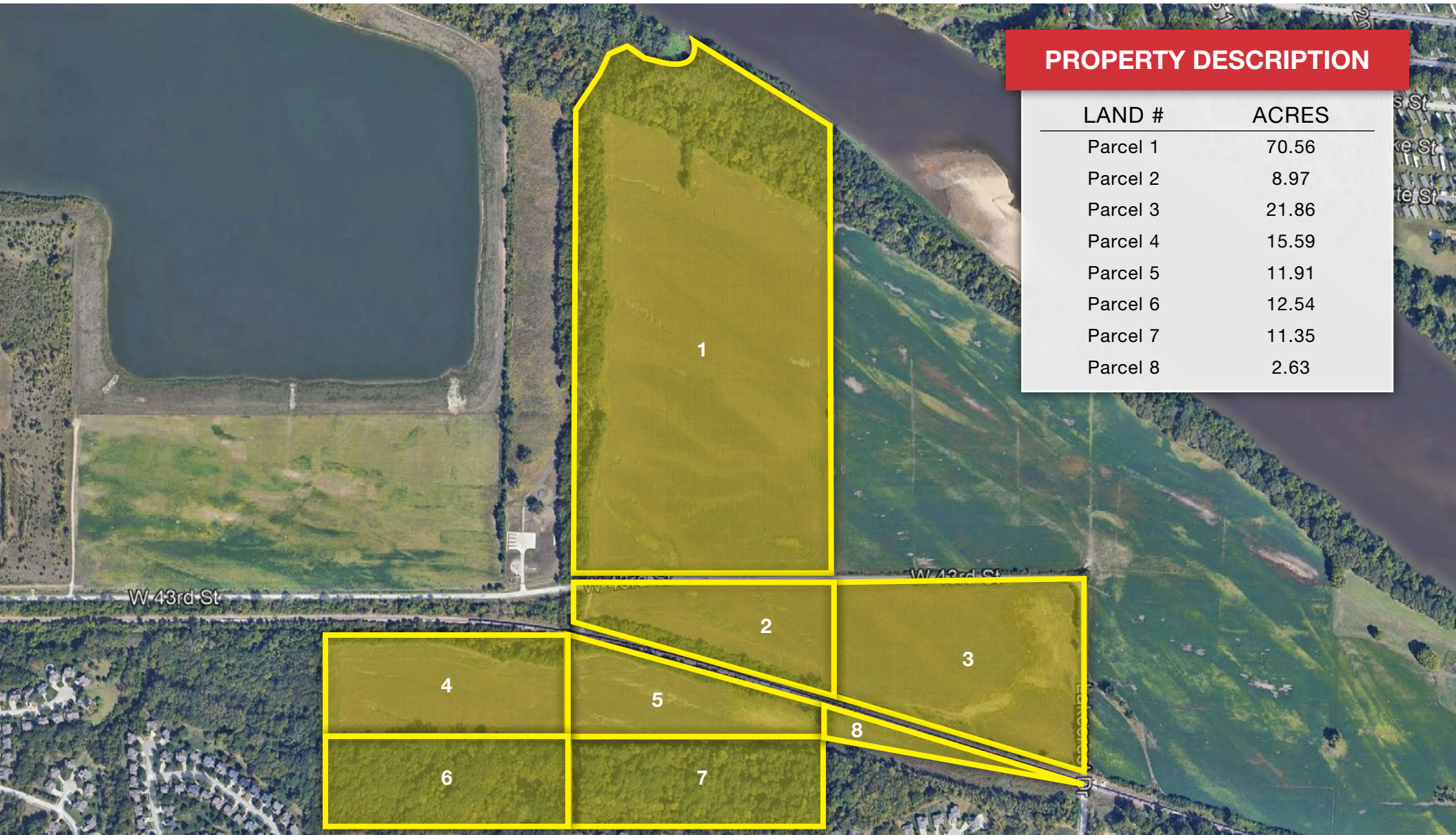


Available For Sale  
155 Acres | Shawnee, KS



**PROPERTY DESCRIPTION**

LAND #	ACRES
Parcel 1	70.56
Parcel 2	8.97
Parcel 3	21.86
Parcel 4	15.59
Parcel 5	11.91
Parcel 6	12.54
Parcel 7	11.35
Parcel 8	2.63



NO WARRANTY OR REPRESENTATION, EXPRESS OR IMPLIED, IS MADE AS TO THE ACCURACY OF THE INFORMATION CONTAINED HEREIN, AND THE SAME IS SUBMITTED SUBJECT TO ERRORS, OMISSIONS, CHANGE OF PRICE, RENTAL OR OTHER CONDITIONS, PRIOR SALE, LEASE OR FINANCING, OR WITHDRAWAL WITHOUT NOTICE, AND OF ANY SPECIAL LISTING CONDITIONS IMPOSED BY OUR PRINCIPALS NO WARRANTIES OR REPRESENTATIONS ARE MADE AS TO THE CONDITION OF THE PROPERTY OR ANY HAZARDS CONTAINED THEREIN ARE ANY TO BE IMPLIED.

4400 College Boulevard Suite 170  
Overland Park, Kansas 66211  
+1 913 362 1000  
[nai-heartland.com](http://nai-heartland.com)