

O'HARE OFFICES



1011 E. Touhy Avenue
Des Plaines, Illinois



1 OF 3 BUILDINGS
IN A 450,000 SF
OFFICE CAMPUS

500 – 85,177 SF
AVAILABLE SPACE

NEWLY REMODELED
\$1,000,000 ATRIUM/LOBBY

COMPLIMENTARY
DIGITAL BILLBOARD
FOR ALL TENANTS

COMPLIMENTARY
FITNESS CENTER &
CONFERENCE FACILITIES

MINUTES FROM O'HARE
WITH IMMEDIATE
EXPRESSWAY ACCESS

Modern Office Space Solutions Flexible Lease Plans

For information contact:

IGNACIO FELLER

Commercial Real Estate Director

(847) 777-9513

ifeller@ohareoffices.com

OhareOffices.com

PROPERTY OVERVIEW

O'Hare Offices is a professionally managed, 450,000-square-foot office campus spanning 28 landscaped acres along Lake Opeka. Located at 999, 1011, and 1111 East Touhy Avenue in Des Plaines, the campus features three five-story buildings with flexible, customizable office suites and a full range of tenant-focused amenities.

Located just minutes from Chicago O'Hare International Airport, with direct access to I-90 and CTA transit, O'Hare Offices provides the connectivity and infrastructure businesses need for long-term growth, only 18 miles from downtown Chicago.



The information contained herein has been obtained from sources believed reliable; however, Owner and its representatives make no warranties or representations, express or implied, as to the accuracy or completeness of such information. All information is subject to errors, omissions, change of price, prior lease, or withdrawal without notice.

MODERN WORKSPACE. PRIME LOCATION. EXCEPTIONAL AMENITIES.

The O'Hare Offices Campus
Offers modern workspaces in a highly convenient location, enhanced by a wide range of modern amenities. With conference and training rooms, along with welcoming collaborative lounges, every detail is designed to support productivity, flexibility, and ease throughout your day.



BUILDING FEATURES & AMENITIES

O'HARE OFFICES 



LOCATION & CONVENIENCE

Ideally positioned near major highways, public transit, and Chicago O'Hare International Airport. Offering seamless regional and national access.



COMPLIMENTARY CONFERENCE ROOMS

Professional, fully equipped conference and training spaces designed for client meetings, team collaboration, presentations, and workshops.



COMPLIMENTARY DIGITAL BILLBOARD

A high-visibility advertising platform along a major corridor, giving tenants a powerful way to elevate brand exposure.



ON-SITE DINING

Fresh, convenient food options that help teams stay energized and productive without leaving the campus.



COMPLIMENTARY VEHICLE CHARGING STATION

On-site EV charging that promotes sustainability and everyday convenience.



ON-SITE MANAGEMENT TEAM

An experienced, responsive management and engineering team providing dedicated service and day-to-day operational support.



COMPLIMENTARY FITNESS CENTER

A fully equipped fitness center with lockers and showers designed to promote employee wellness and support flexible workday routines.



MOVE-IN-READY & BUILT-TO-SUIT OFFICE SPACES

Versatile office layouts tailored to your operational needs, budget, and long-term growth plans.



COMPLIMENTARY ATRIUM EVENT SPACE

A spacious on-site venue available for company events, networking functions, and corporate gatherings.



LOCAL ATTRACTIONS

Surrounded by dining, retail, hospitality, and recreational destinations that enhance the workplace experience.

O'HARE OFFICES



1011 E. Touhy Ave
500-85,177 SF

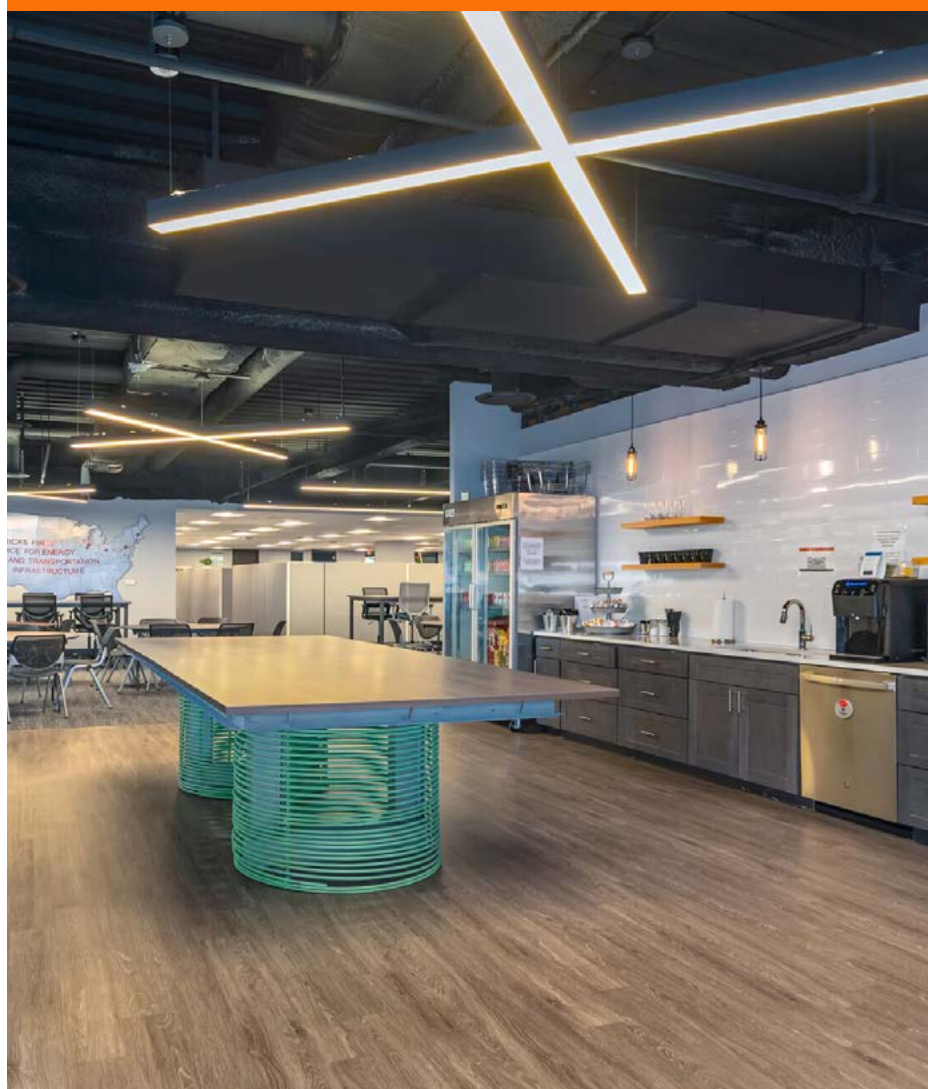
AVAILABLE SUITES

- Suite 200 | SF: 7,352
- Suite 220 | SF: 1,238
- Suite 245 | SF: 15,180

- Suite 315 | SF: 5,881
- Suite 360 | SF: 2,596
- Suite 390 | SF: 9,620

- Suite 400 | SF: 10,689
- Suite 410 | SF: 4,183
- Suite 420 | SF: 3,048
- Suite 475 | SF: 7,997

- Suite 525 | SF: 5,441
- Suite 560 | SF: 2,025
- Suite 575 | SF: 2,466
- Suite 585 | SF: 9,299



Building Type/Class
Office/B

Year Built/Renovated
1979/2024

Building Size
171,226 SF

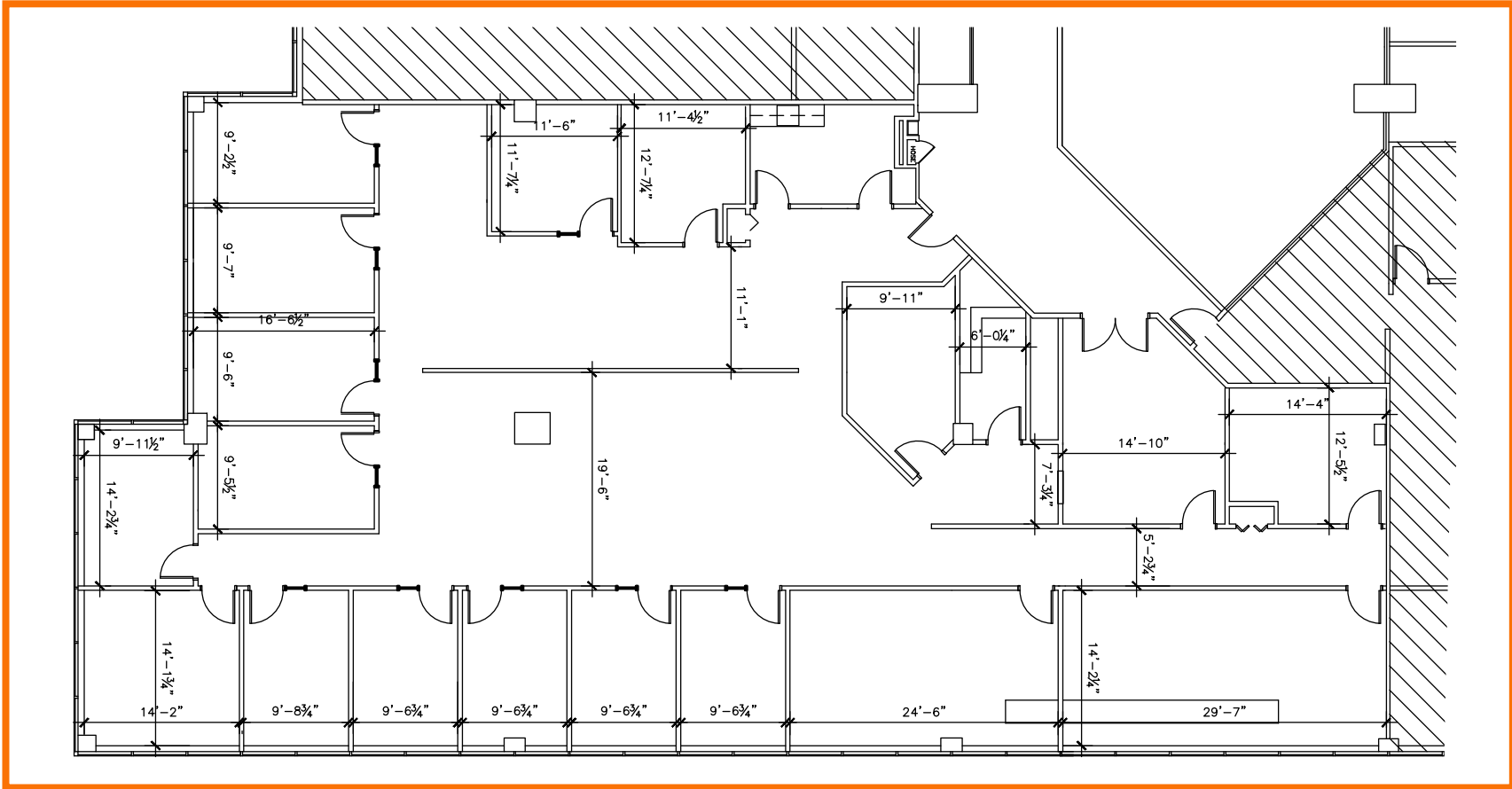
Building Height
5 Stories

Typical Floor Size
30,755 SF

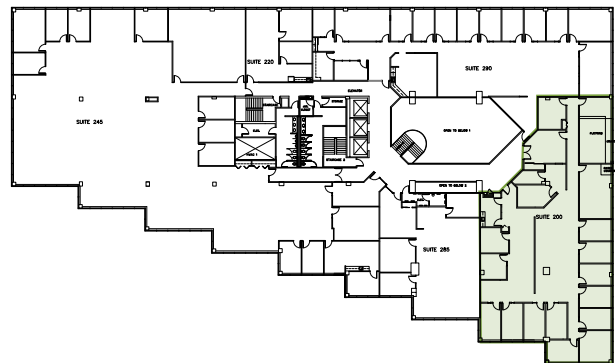
Parking
466 Spaces

FLOOR PLANS Second Floor

1011 East Touhy



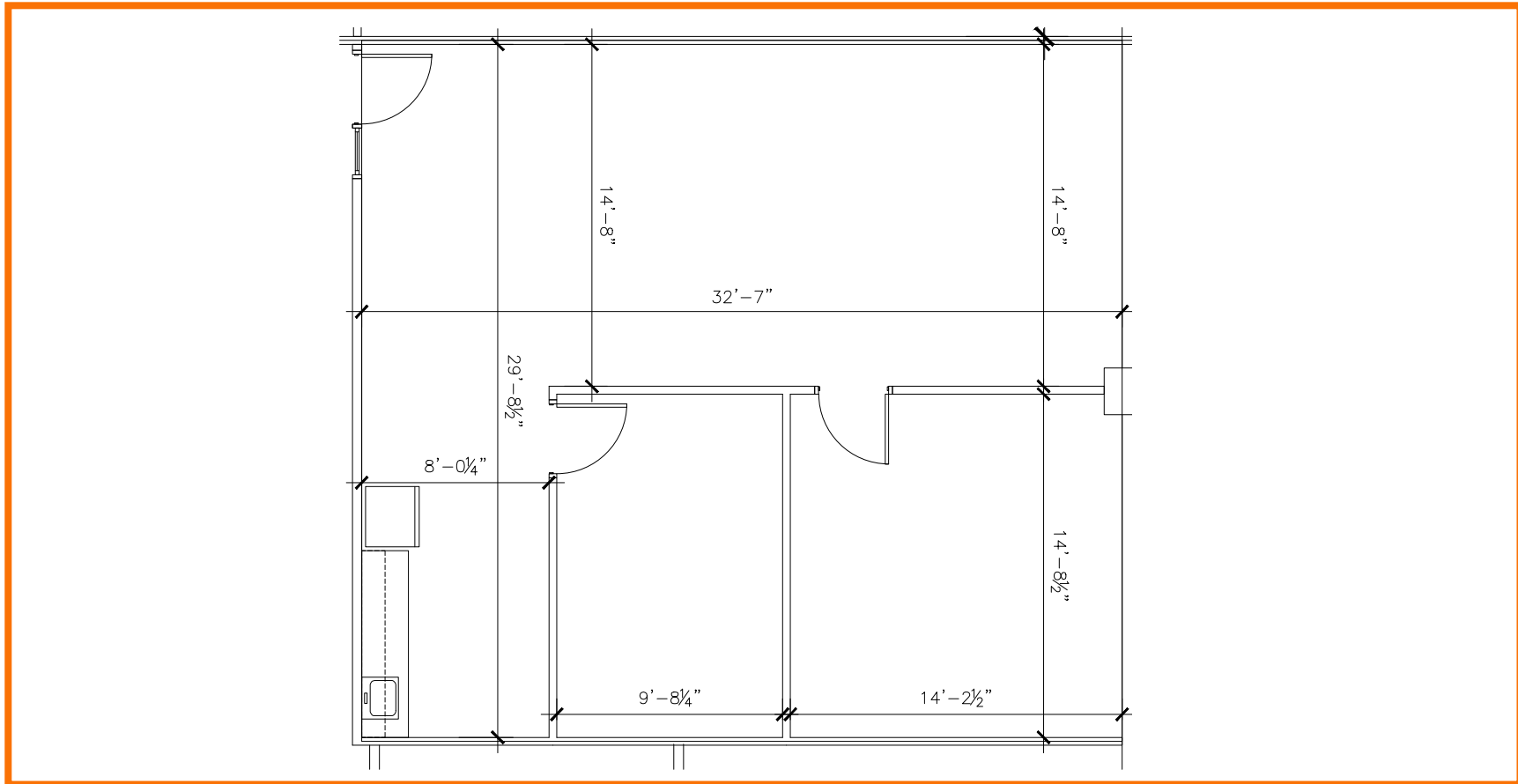
Suite 200 | SF: 7,352



For information contact:
IGNACIO FELLER
Commercial Real Estate Director
(847) 777-9513
ifeller@ohareoffices.com
OhareOffices.com

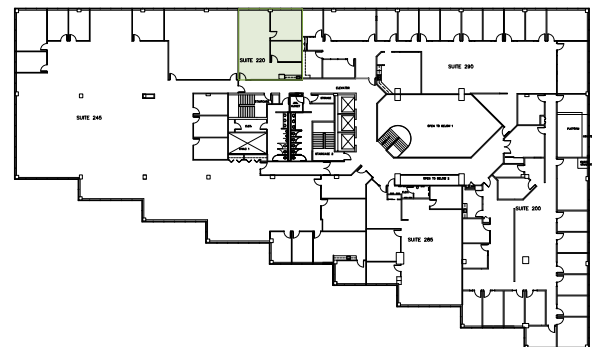
FLOOR PLANS Second Floor

1011 East Touhy



Suite 220 | SF: 1,238

- Excellent condition
- Flexible layout with large open workspace
- Breakroom/Kitchenette



For information contact:

IGNACIO FELLER

Commercial Real Estate Director

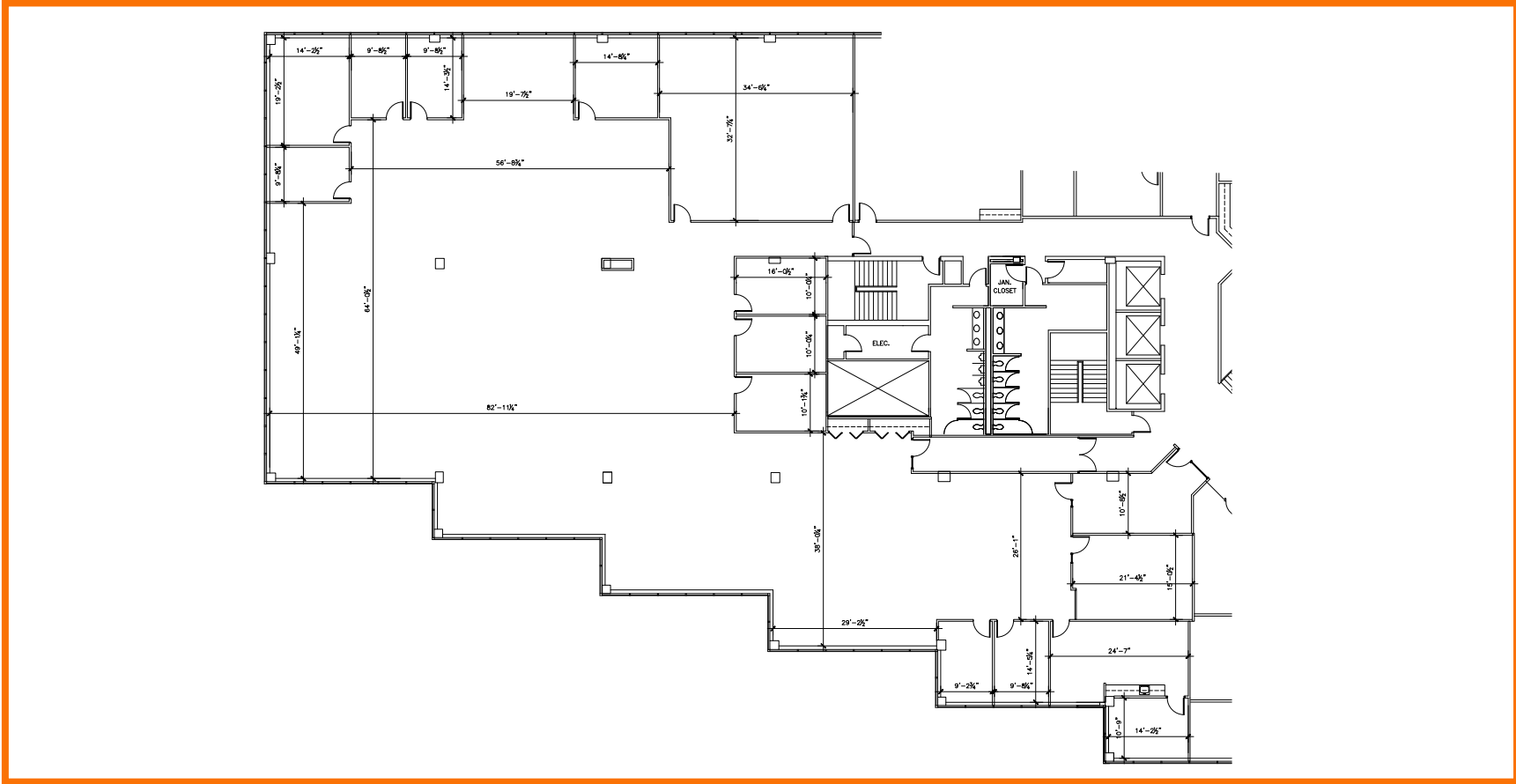
(847) 777-9513

ifeller@ohareoffices.com

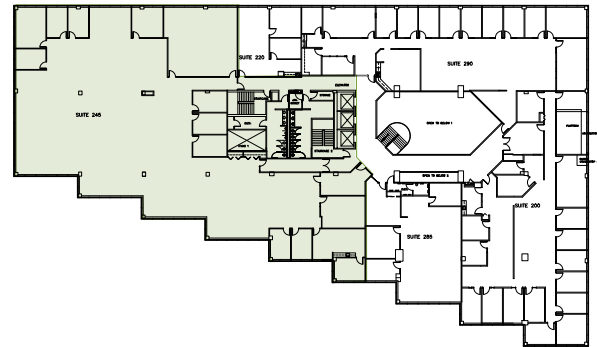
OhareOffices.com

FLOOR PLANS Second Floor

1011 East Touhy



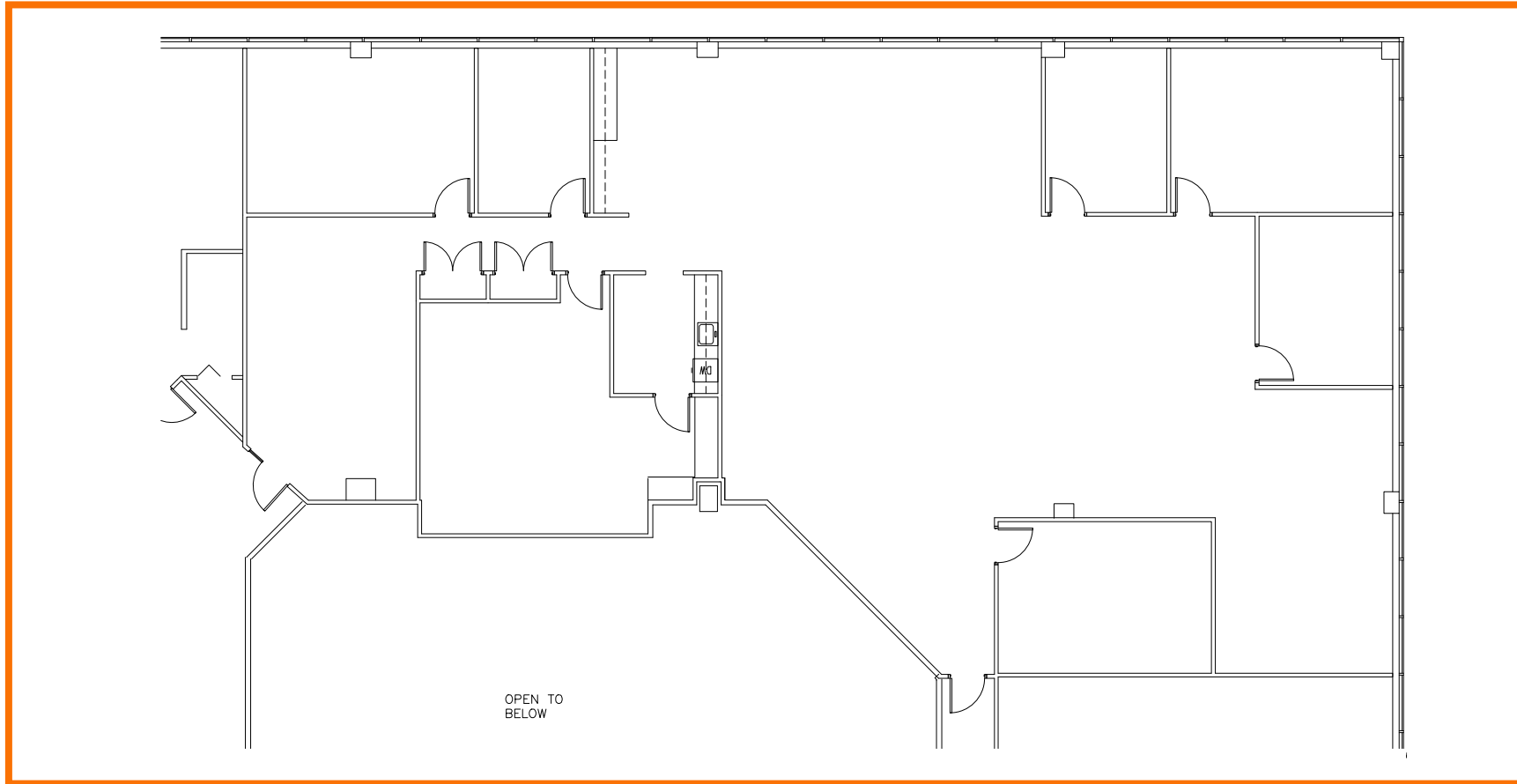
Suite 245 | SF: 15,180



For information contact:
IGNACIO FELLER
Commercial Real Estate Director
(847) 777-9513
ifeller@ohareoffices.com
OhareOffices.com

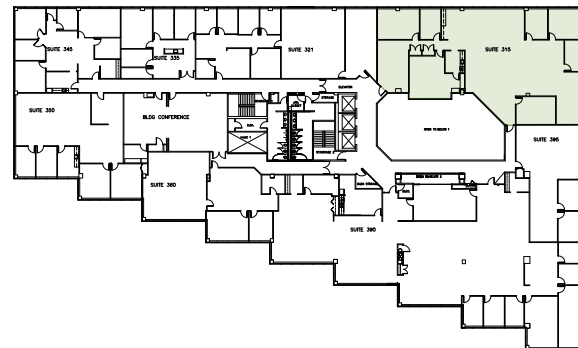
FLOOR PLANS Third Floor

1011 East Touhy



Suite 315 | SF: 5,881

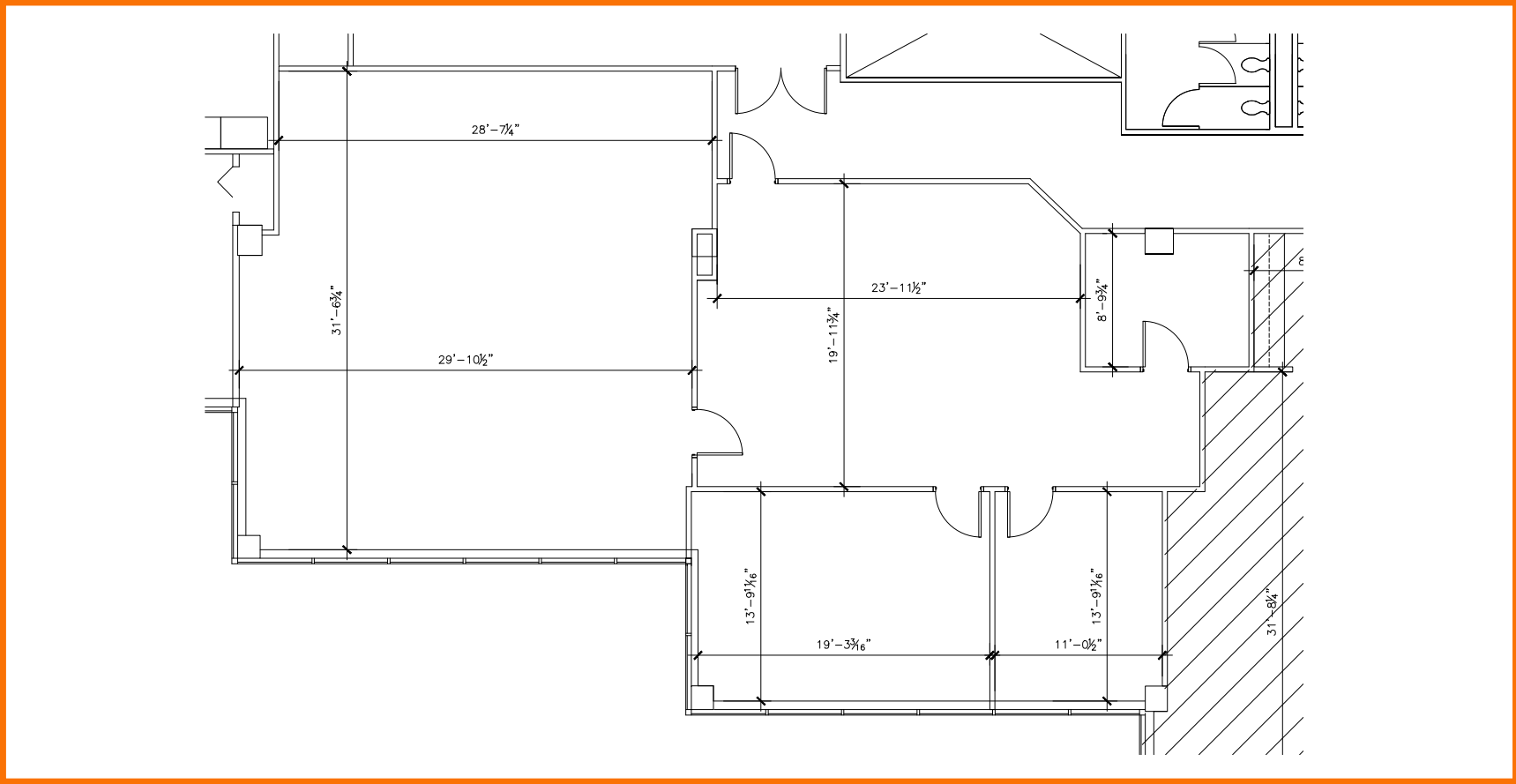
- Second-generation office space with existing layout in place
- Click to take a Virtual Tour



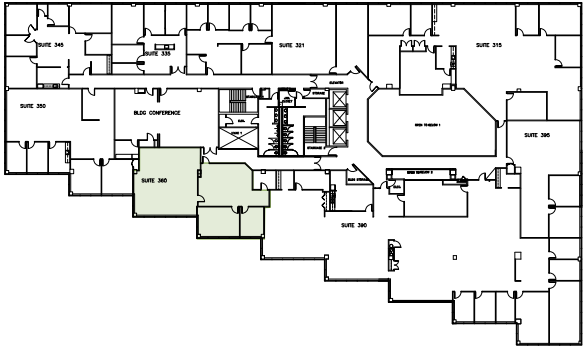
For information contact:
IGNACIO FELLER
Commercial Real Estate Director
(847) 777-9513
ifeller@ohareoffices.com
OhareOffices.com

FLOOR PLANS Third Floor

1011 East Touhy



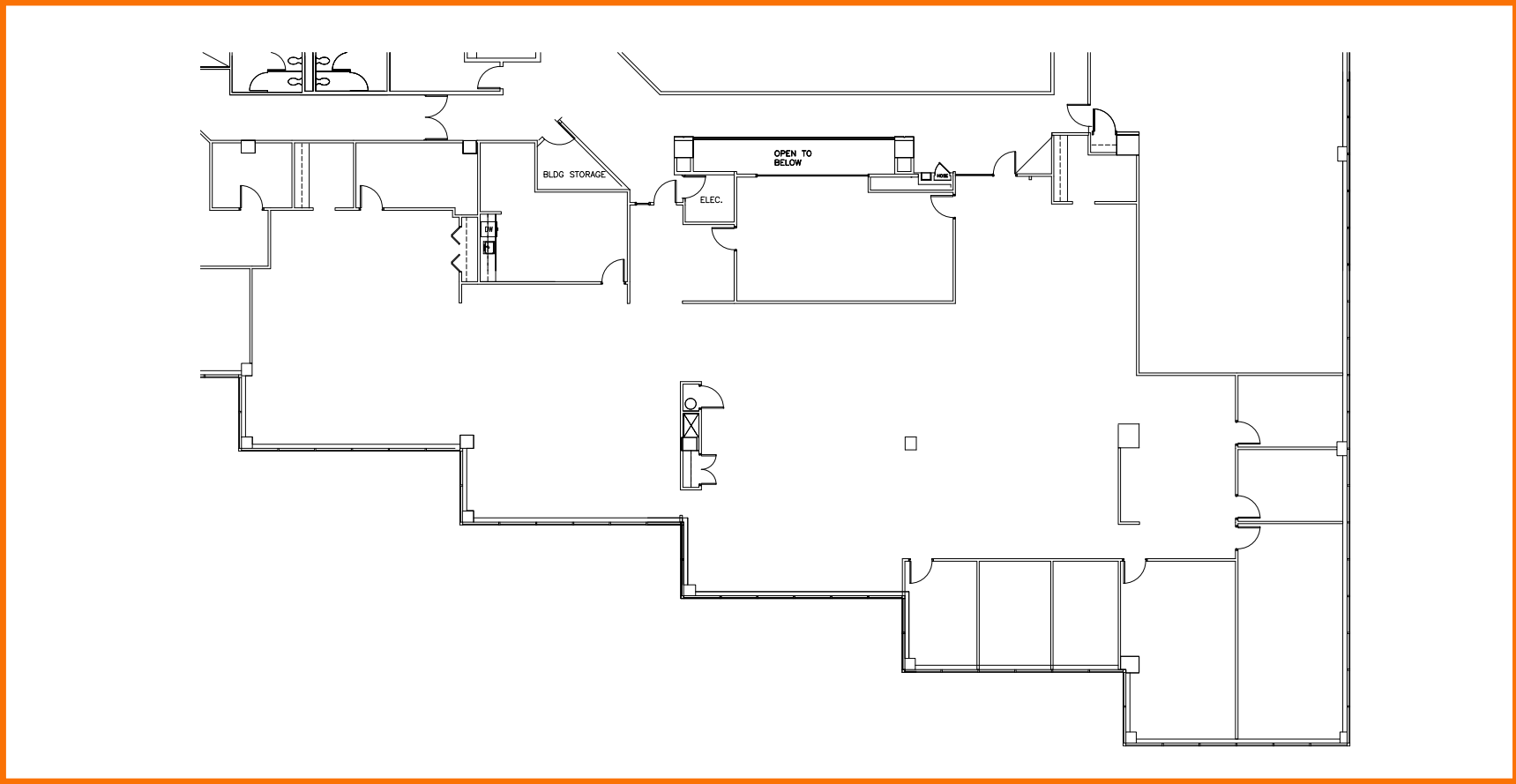
Suite 360 | SF: 2,596



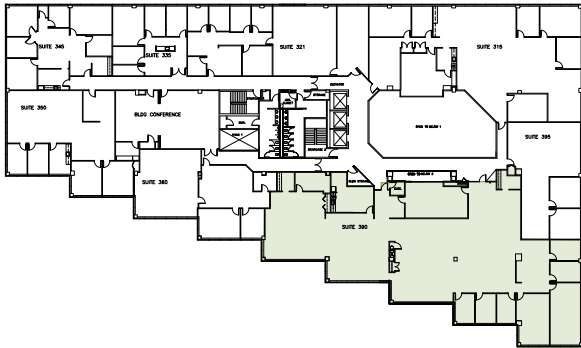
For information contact:
IGNACIO FELLER
Commercial Real Estate Director
(847) 777-9513
ifeller@ohareoffices.com
OhareOffices.com

FLOOR PLANS Third Floor

1011 East Touhy



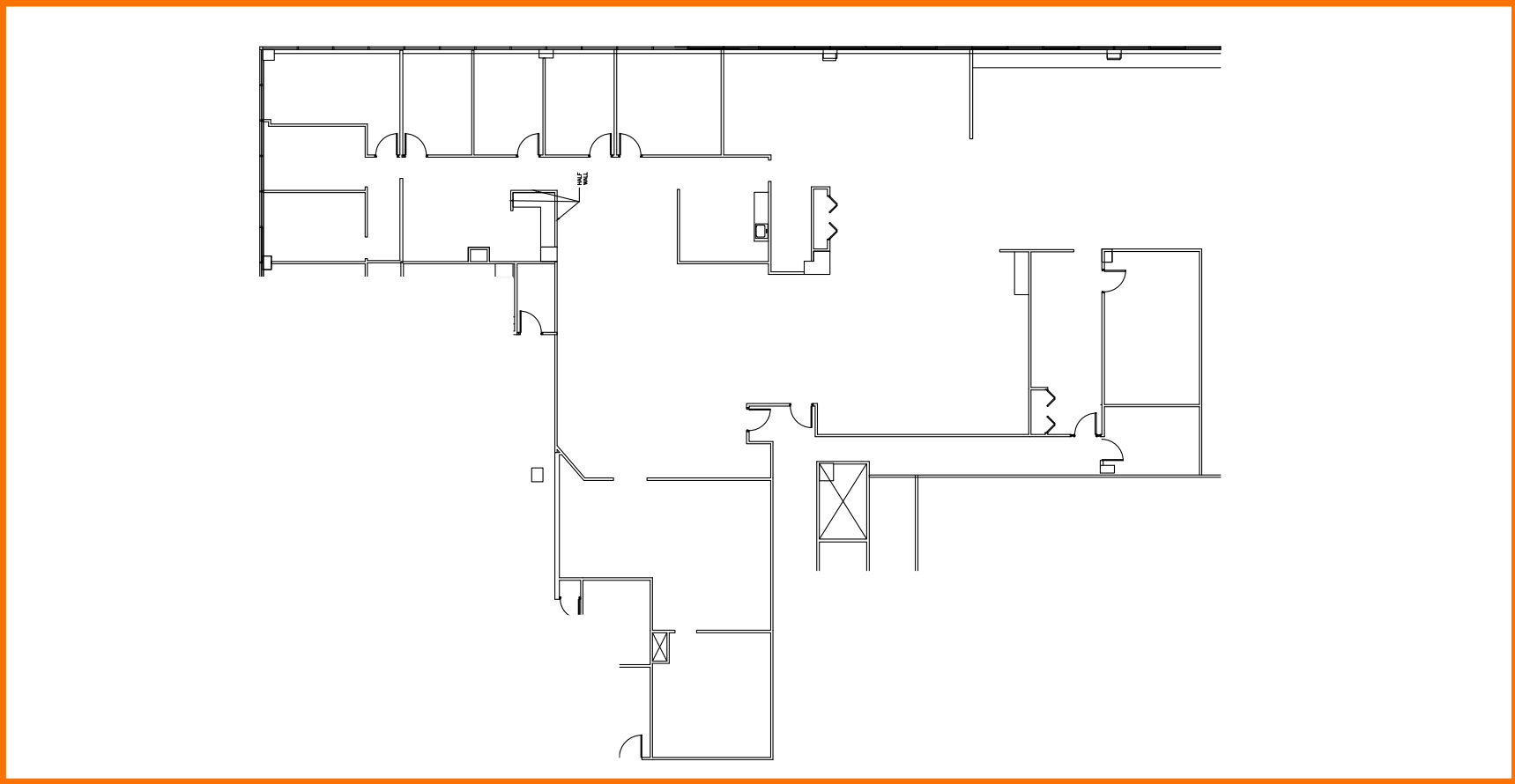
Suite 390 | SF: 9,620



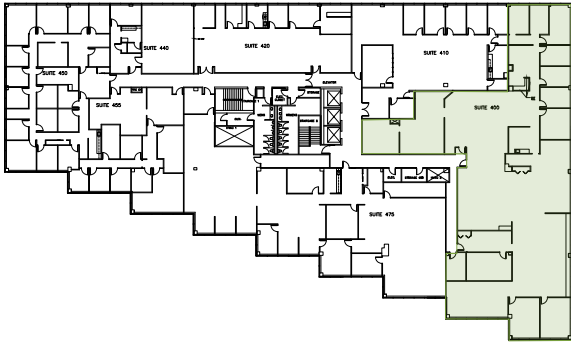
For information contact:
IGNACIO FELLER
Commercial Real Estate Director
(847) 777-9513
ifeller@ohareoffices.com
OhareOffices.com

FLOOR PLANS Fourth Floor

1011 East Touhy



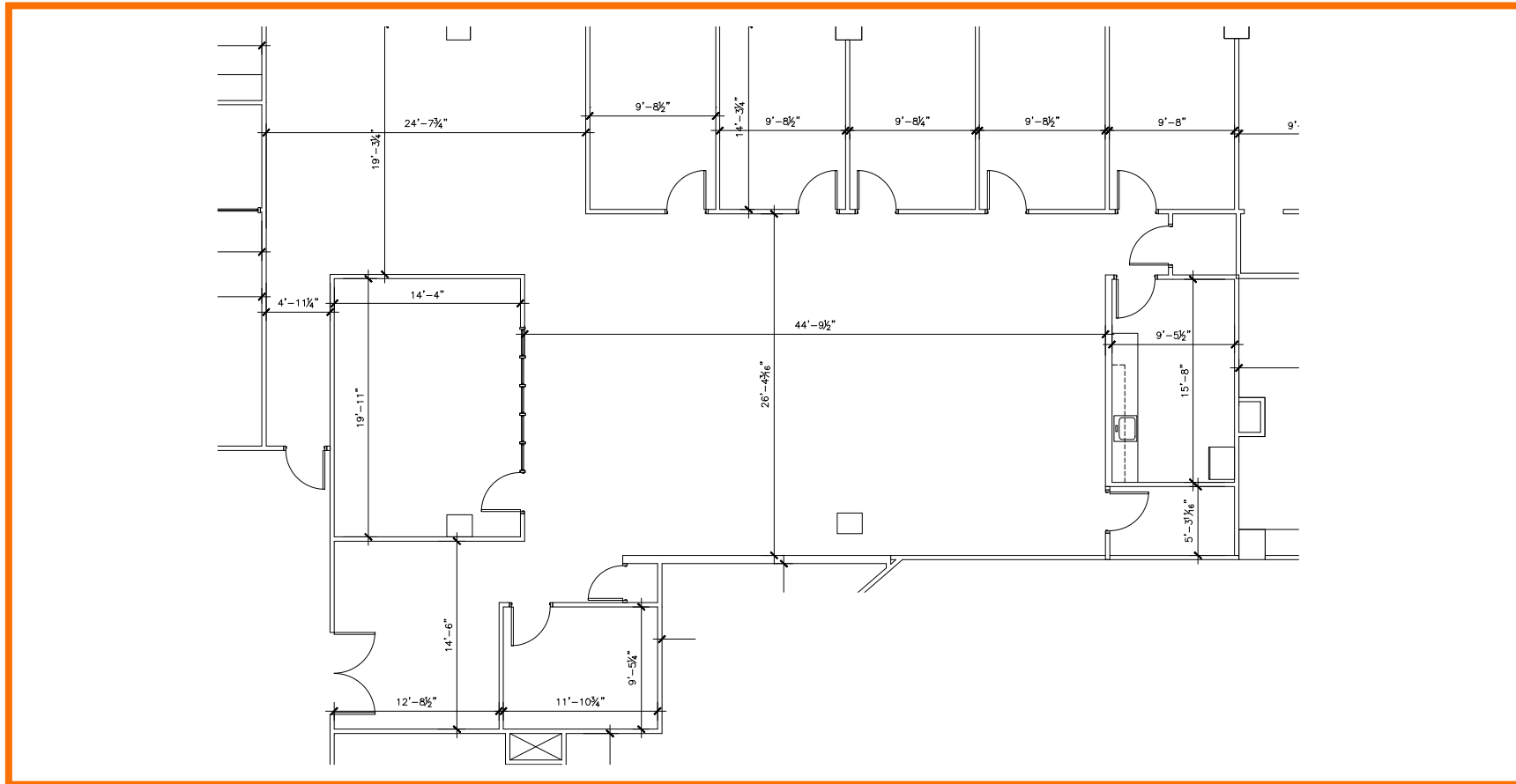
Suite 400 | SF: 10,689



For information contact:
IGNACIO FELLER
Commercial Real Estate Director
(847) 777-9513
ifeller@ohareoffices.com
OhareOffices.com

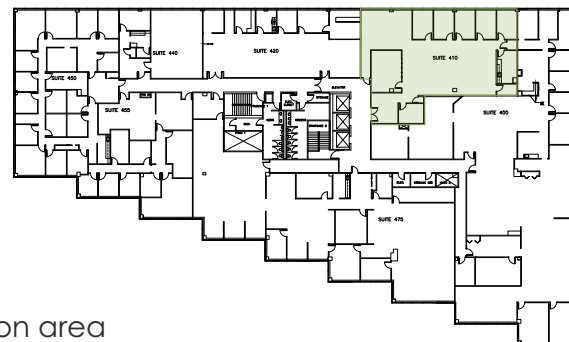
FLOOR PLANS Fourth Floor

1011 East Touhy



Suite 410 | SF: 4,183

- Fully built-out office suite in excellent condition
- Brand new carpet, paint, LED lighting, and updated breakroom cabinetry
- Bright, modern layout with a strong mix of private offices and large central open workspace
- Glass-front entrance directly off the elevator lobby
- Large conference room plus soft seating/collaboration area
- Full breakroom/kitchen
- Furniture available, including workstations and related pieces



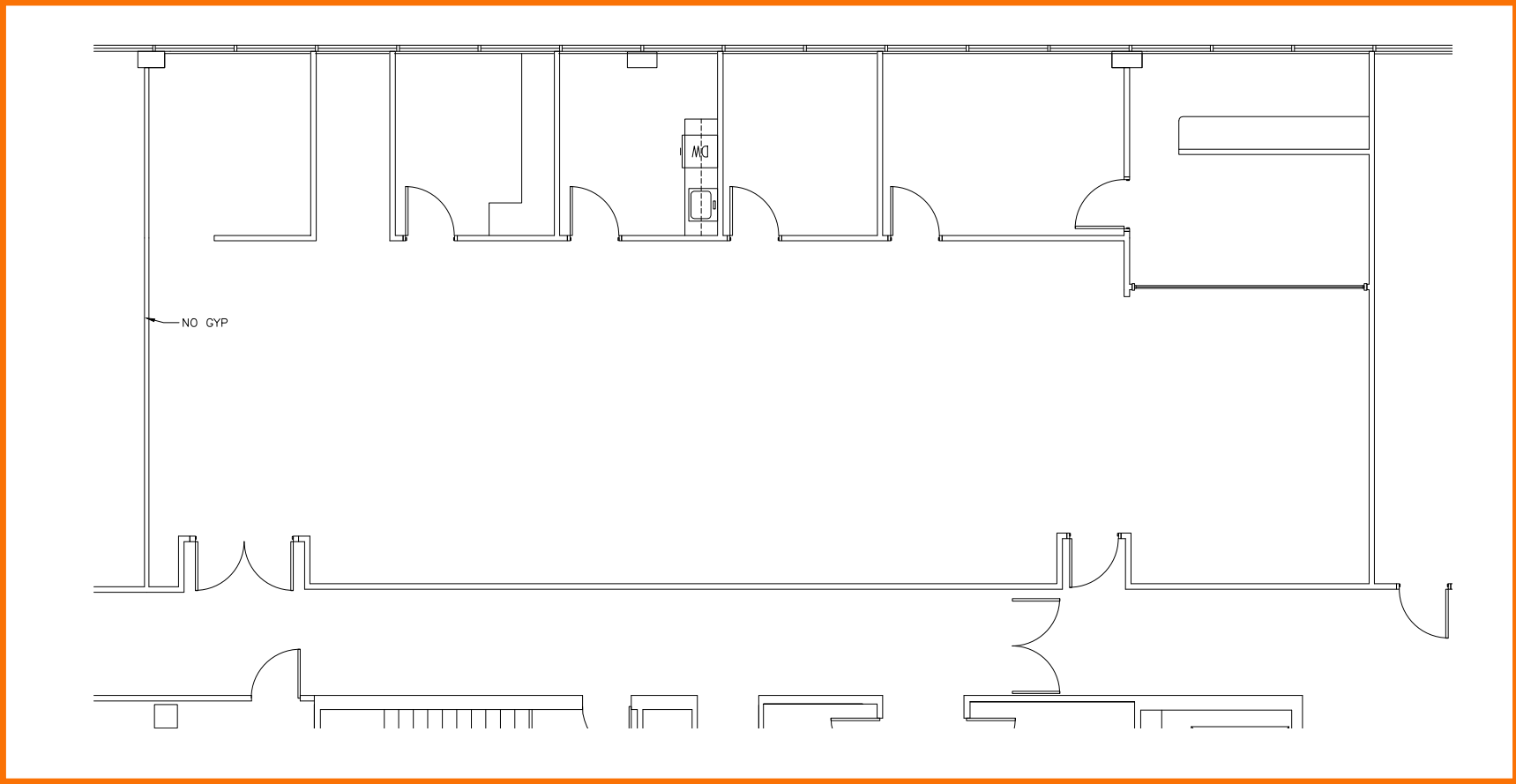
For information contact:

IGNACIO FELLER

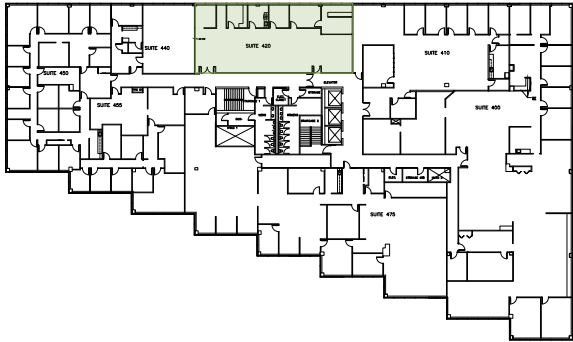
Commercial Real Estate Director
(847) 777-9513
ifeller@ohareoffices.com
OhareOffices.com

FLOOR PLANS Fourth Floor

1011 East Touhy



Suite 420 | SF: 3,048

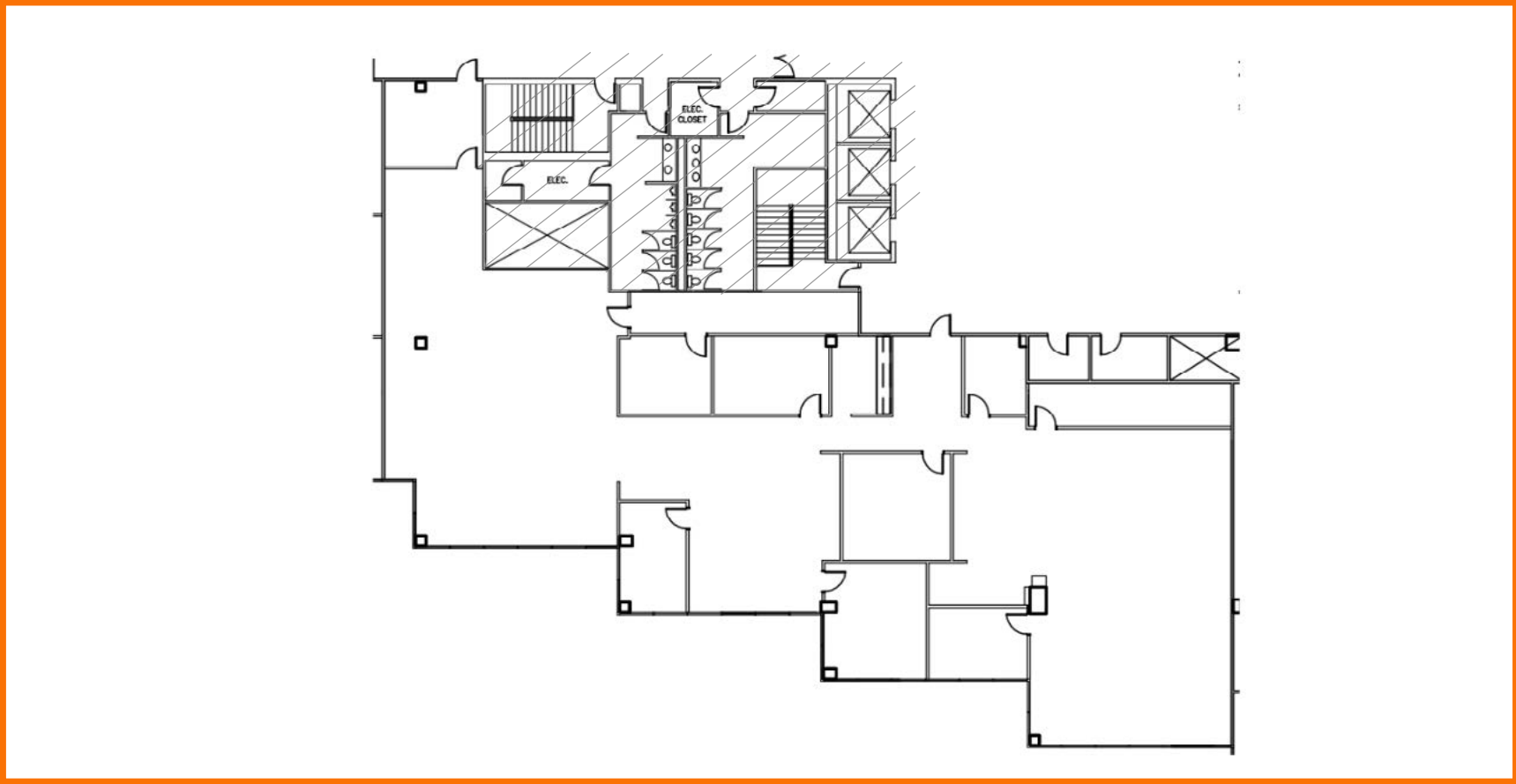


For information contact:
IGNACIO FELLER
Commercial Real Estate Director
(847) 777-9513
ifeller@ohareoffices.com
OhareOffices.com

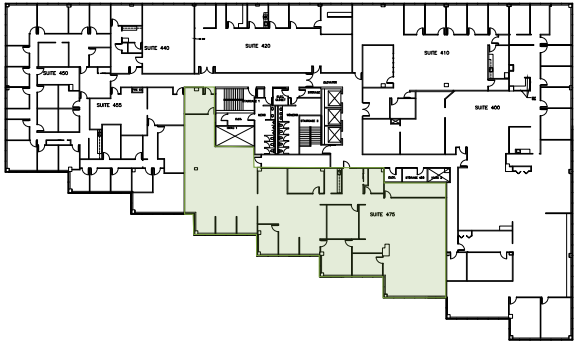
FLOOR PLANS Fourth Floor



1011 East Touhy



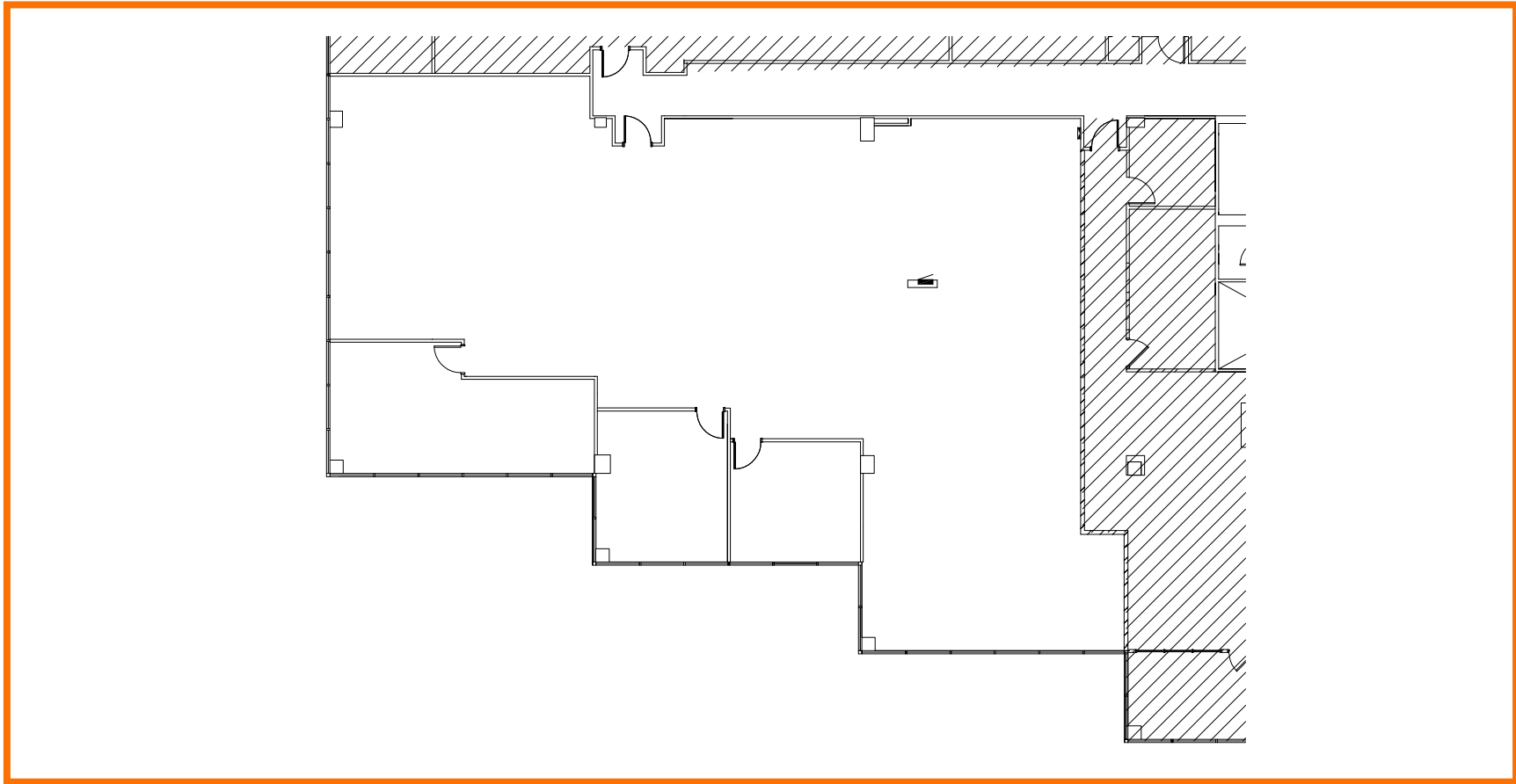
Suite 475 | SF: 7,997



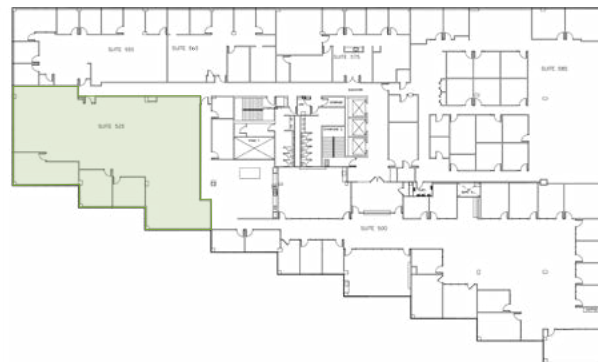
For information contact:
IGNACIO FELLER
Commercial Real Estate Director
(847) 777-9513
ifeller@ohareoffices.com
OhareOffices.com

FLOOR PLANS Fifth Floor

1011 East Touhy



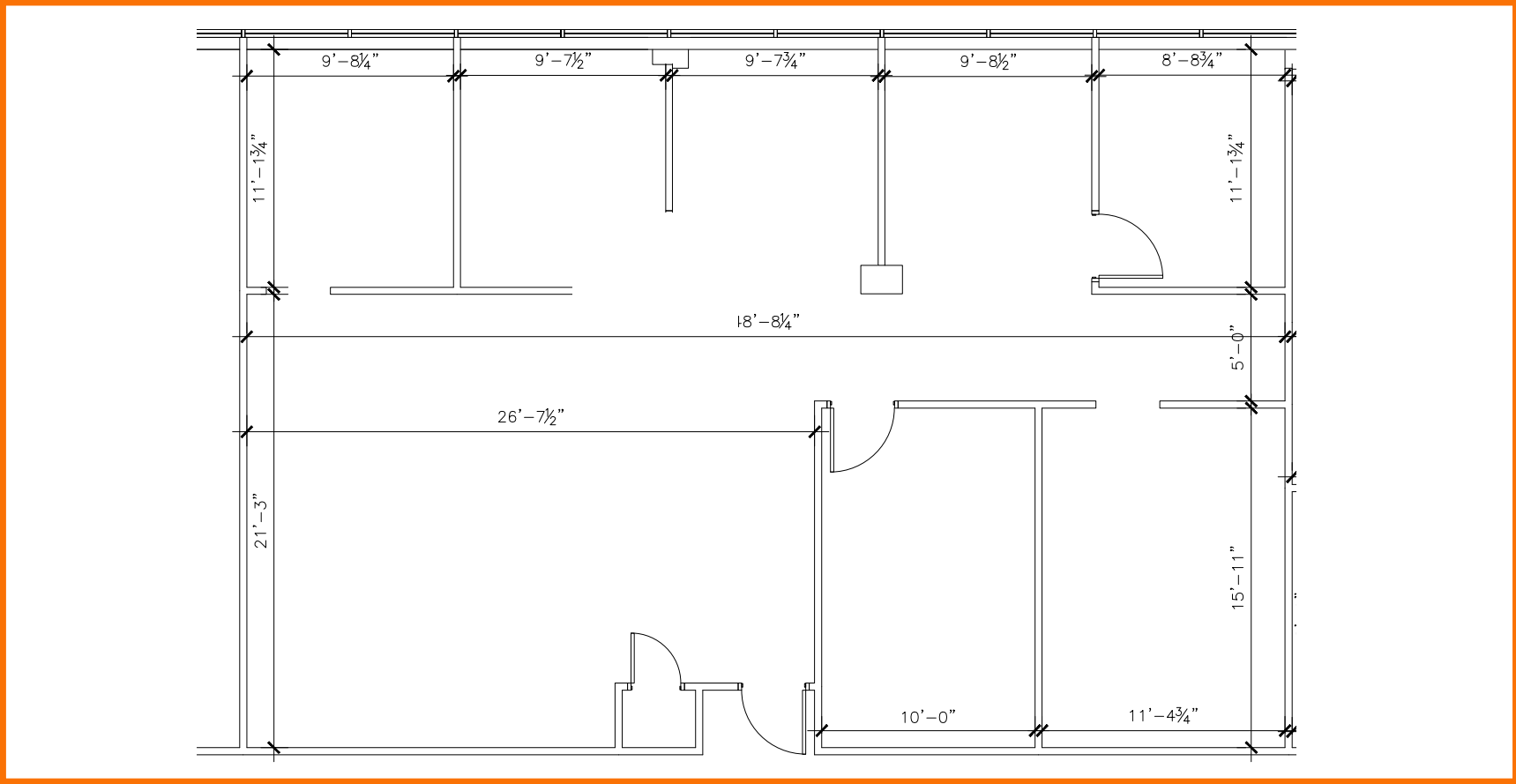
Suite 525 | SF: 5,441



For information contact:
IGNACIO FELLER
Commercial Real Estate Director
(847) 777-9513
ifeller@ohareoffices.com
OhareOffices.com

FLOOR PLANS Fifth Floor

1011 East Touhy



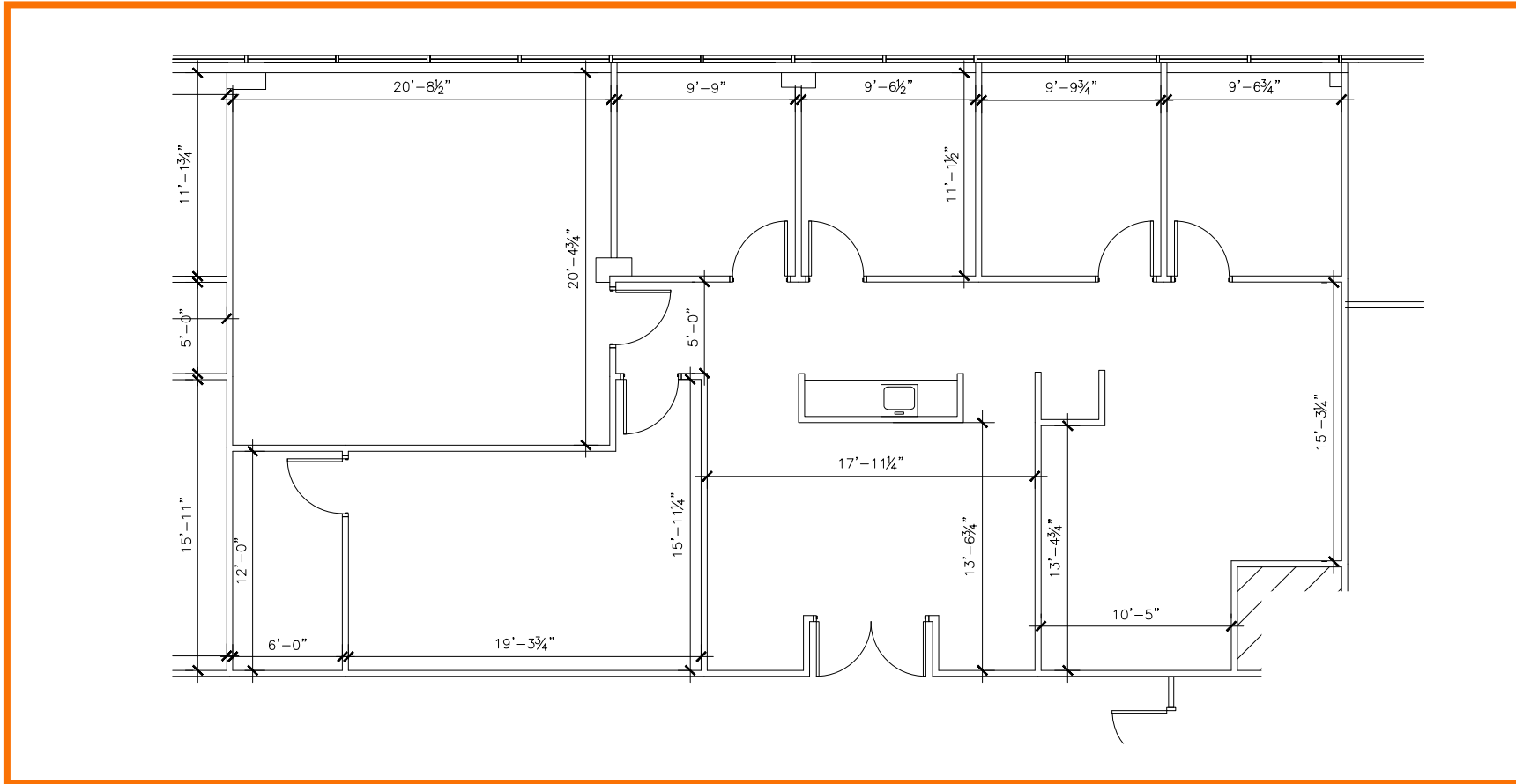
Suite 560 | SF: 2,025



For information contact:
IGNACIO FELLER
Commercial Real Estate Director
(847) 777-9513
ifeller@ohareoffices.com
OhareOffices.com

FLOOR PLANS Fifth Floor

1011 East Touhy



Suite 575 | SF: 2,466

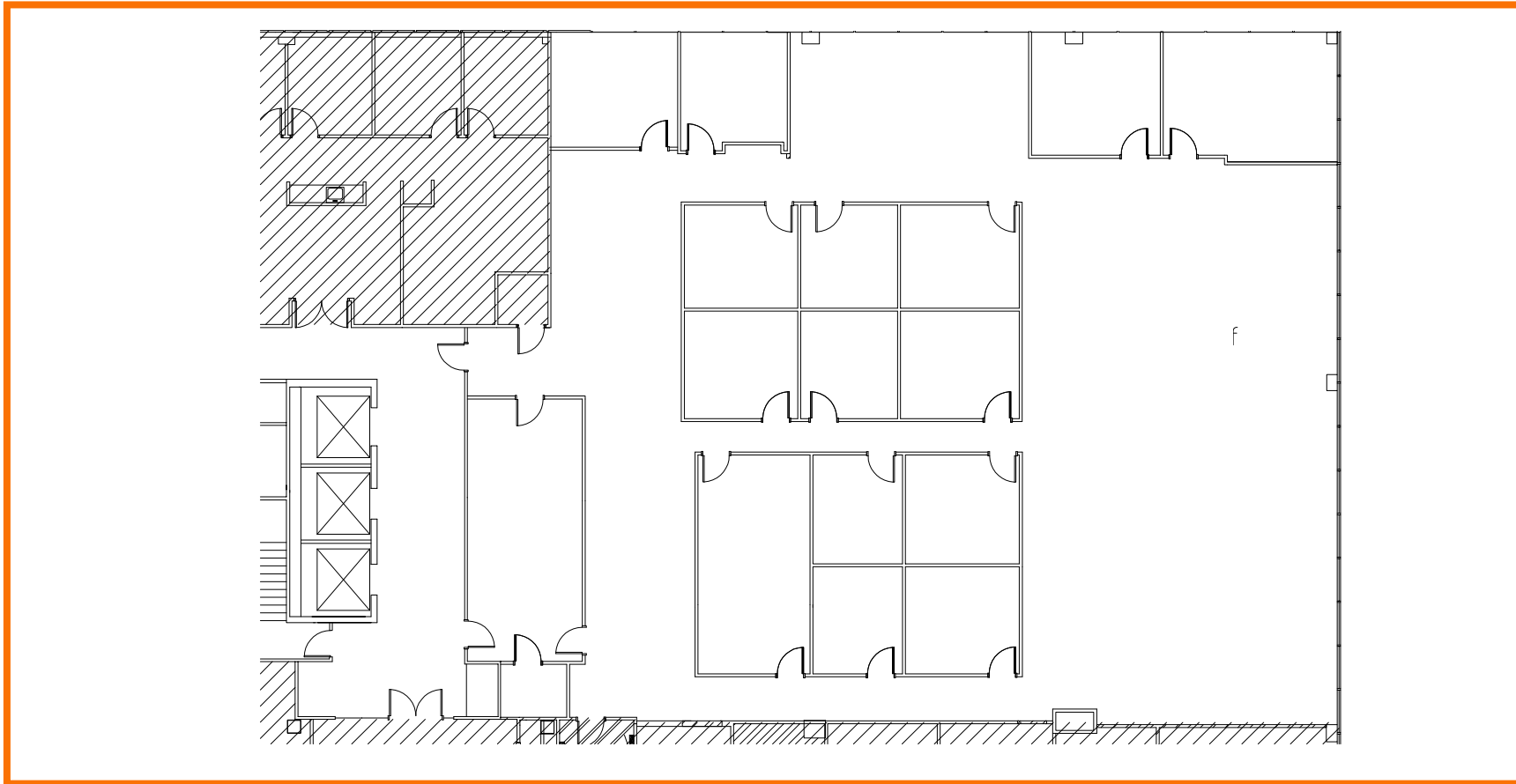
- Second-generation office space with existing layout in place



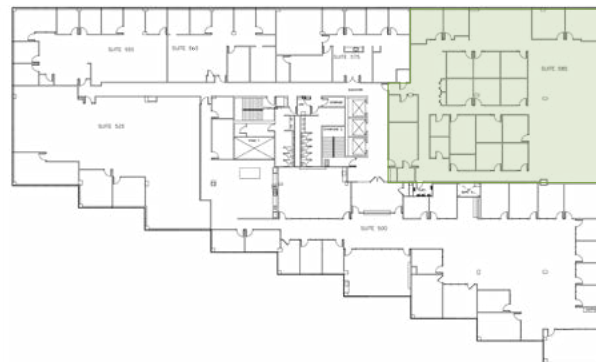
For information contact:
IGNACIO FELLER
Commercial Real Estate Director
(847) 777-9513
ifeller@ohareoffices.com
OhareOffices.com

FLOOR PLANS Fifth Floor

1011 East Touhy



Suite 585 | SF: 9,299



For information contact:
IGNACIO FELLER
Commercial Real Estate Director
(847) 777-9513
ifeller@ohareoffices.com
OhareOffices.com