

# FLAGSTAFF MALL

FOR LEASE

Shops, Pad & Anchor Space Available

Marketplace Drive & US-89 | Flagstaff, AZ





# Shops & Anchor Space Available

Marketplace Drive & US-89 | Flagstaff, AZ



FLAGSTAFF  
MALL

## AVAILABLE

- 1 - 16,527 SF - Anchor 4
- 1a 5,992 SF - Anchor 4 - Expansion
- 2 - 4,608 SF - Retail Space
- 3 - 3,574 SF - Retail Space
- 4 - 2,590 SF - Retail Space
- 5 - 1,266 SF - Retail Space
- 6 - 569 SF - Retail Space
- 7 - 4,271 - Available Q1 2026
- 8 - 1 AC - PAD C





# Retail & Anchor Space Available at Flagstaff Mall

Marketplace Drive & US-89 | Flagstaff, AZ



## FEATURED SUITES



Anchor 4 / Exterior / 16,527 SF



Anchor 4 / Interior / 16,527 SF



Suite 2 / Retail Showroom / 4,608 SF



Suite 2 / Retail Showroom / 4,608 SF



Suite 5 / New Storefront / Conceptual Rendering  
1,266 SF



Suite 3 / Retail Showroom / 3,574 SF



# Shops & Anchor Space Available

Marketplace Drive & US-89 | Flagstaff, AZ



## DEMOGRAPHIC HIGHLIGHTS (2025)

### 3 MILE

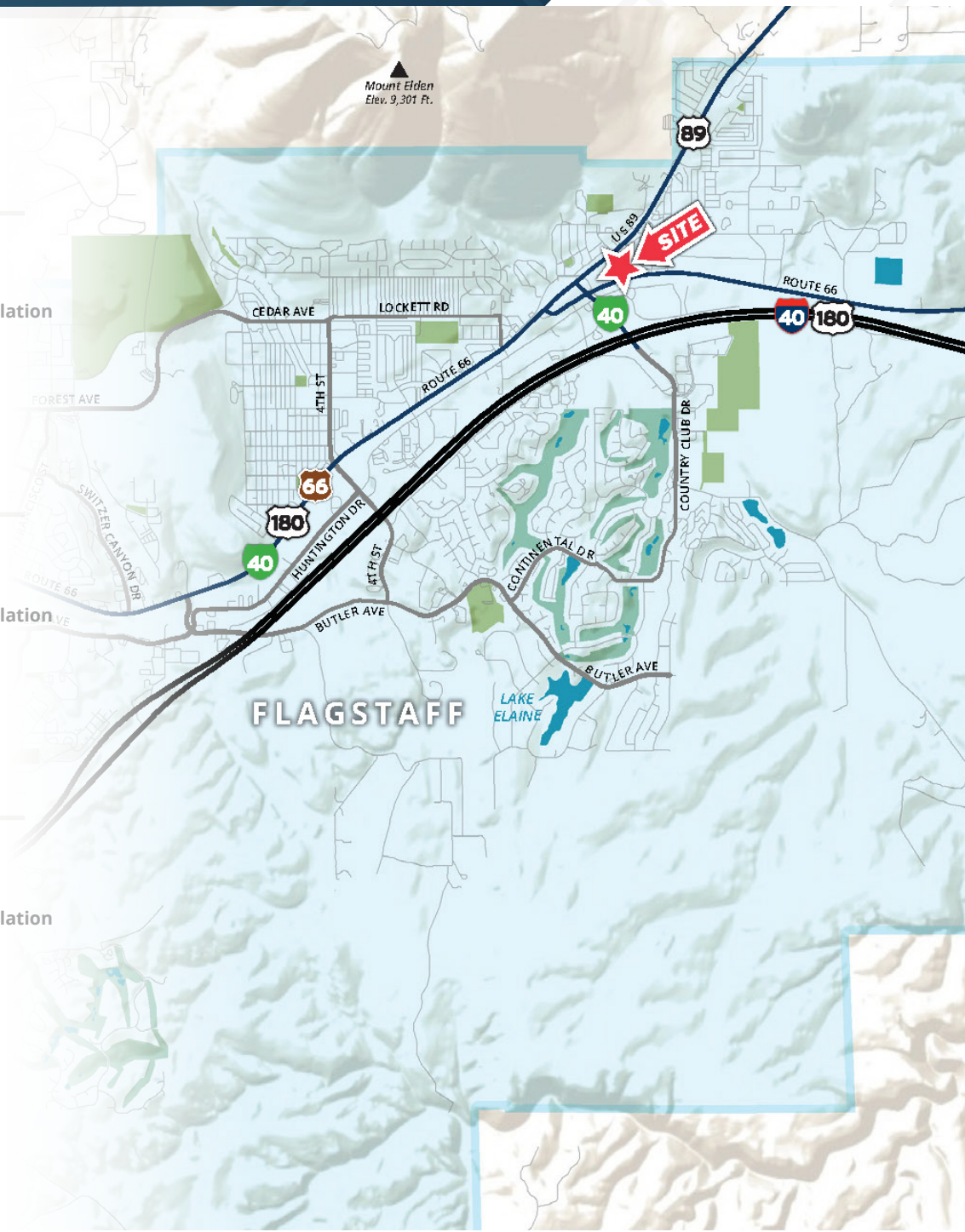
28,397	29,291	\$104,500	29,209
2025 Population	2030 Population	Avg Household Income	Daytime Population

### 5 MILES

50,296	51,494	\$107,598	57,256
2025 Population	2030 Population	Avg Household Income	Daytime Population

### 7 MILES

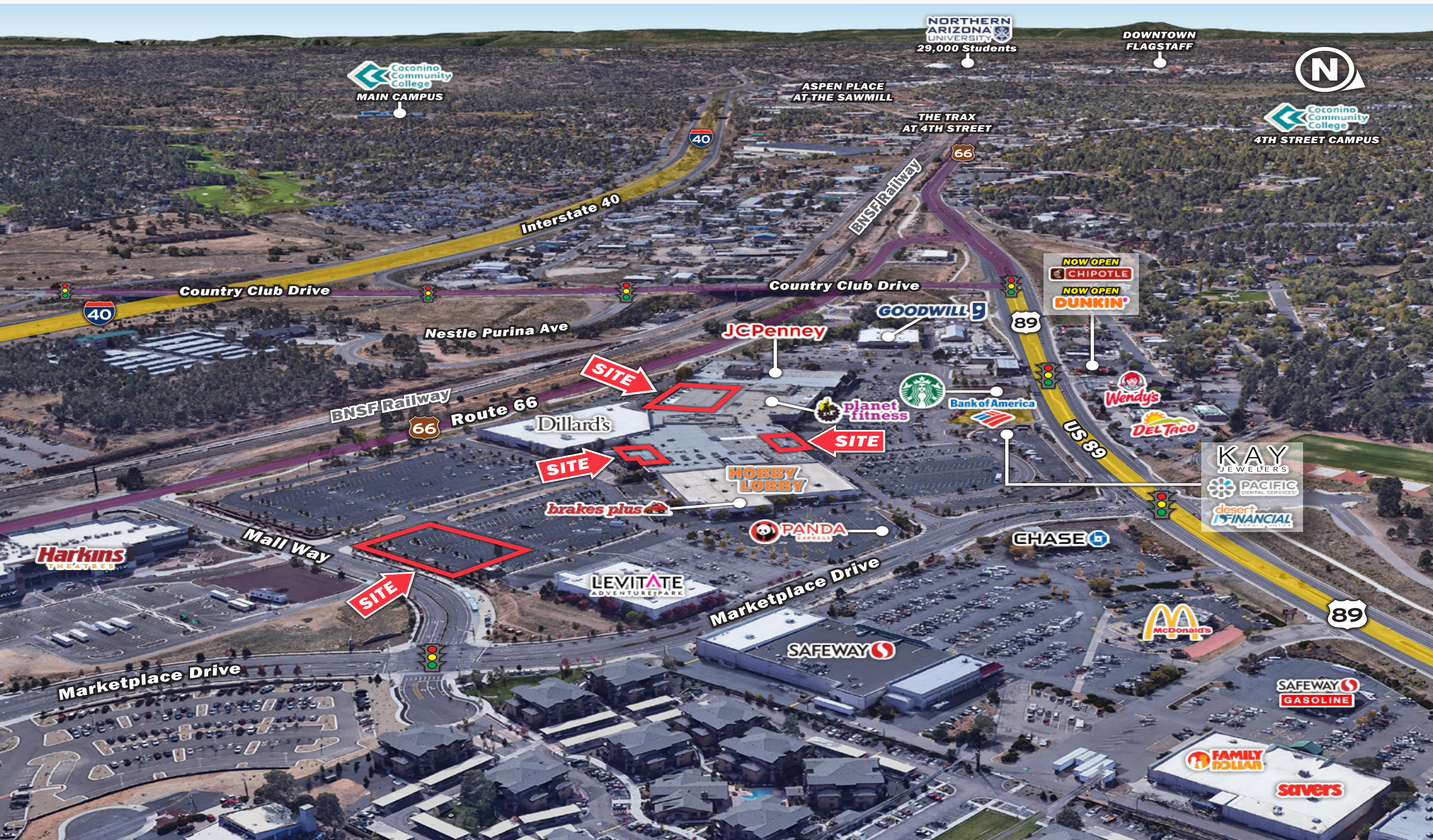
88,021	90,220	\$111,968	86,956
2025 Population	2030 Population	Avg Household Income	Daytime Population



















**SRS**

3131 E Camelback Road, Suite 110  
Phoenix, AZ 85016  
602.682.6000

**BRIAN POLACHEK**

602.682.6045

brian.polachek@srsre.com

**ED BEEH**

602.682.6040

ed.beeh@srsre.com

**BRAD BALBO**

602.682.6016

brad.balbo@srsre.com

**SRSRE.COM**

© SRS

The information presented was obtained from sources deemed reliable;  
however SRS does not guarantee its completeness or accuracy.