

# IVYLAND PROFESSIONAL CENTER

882 Jacksonville Road, Ivyland, PA 18974

 FOR LEASE

 OFFICE

 1,585 SF



## PROPERTY DESCRIPTION

- Suite 203 - 1,585 SF available on first floor
- Two entrances to Suite from interior lobby or exterior of property - front or back of building
- Beautiful open space with serene tree-lined view from back private entrance
- Ideal for office or medical use
- Pylon signage
- Neighboring tenants include: Labcorp, Children of America, Sushi Stop, Susan Matthew Salon & Spa, Taormina's Pizza & Pasta,
- Minutes from Street Road, under 6 miles to PA Turnpike Willow Grove Interchange
- Zoned IC2 - Industrial/Commercial District

LEASE RATE:

**\$2,750/MONTH GROSS**

## FOR MORE INFORMATION


Zena Charokopos

 215.396.2900 x103

 zena.charokopos@naimertz.com

NAI MERTZ DISCLAIMER: NO WARRANTY OR REPRESENTATION, EXPRESS OR IMPLIED, IS MADE AS TO THE ACCURACY OF THE INFORMATION CONTAINED HEREIN, AND THE SAME IS SUBMITTED SUBJECT TO ERRORS, OMISSIONS, CHANGE OF PRICE, RENTAL OR OTHER CONDITIONS, PRIOR SALE, LEASE OR FINANCING, OR WITHDRAWAL WITHOUT NOTICE, AND OF ANY SPECIAL LISTING CONDITIONS IMPOSED BY OUR PRINCIPALS. NO WARRANTIES OR REPRESENTATIONS ARE MADE AS TO THE CONDITION OF THE PROPERTY OR ANY HAZARDS CONTAINED THEREIN ARE ANY TO BE IMPLIED. OUTLINES ARE APPROXIMATE AND SHOWN ONLY TO IDENTIFY THE PARCEL IN CONSIDERATION.

# NAI Mertz

 NAI Mertz | 210 E. Street Road, Suite 3B  
Feasterville-Trevese, PA 19053  
215-396-2900 | [naimertz.com](http://naimertz.com)





# IVYLAND PROFESSIONAL CENTER

882 Jacksonville Road, Ivyland, PA 18974

 FOR LEASE

 OFFICE

 1,585 SF



## FOR MORE INFORMATION


Zena Charokopos

 215.396.2900 x103

 zena.charokopos@naimertz.com

NAI MERTZ DISCLAIMER: NO WARRANTY OR REPRESENTATION, EXPRESS OR IMPLIED, IS MADE AS TO THE ACCURACY OF THE INFORMATION CONTAINED HEREIN, AND THE SAME IS SUBMITTED SUBJECT TO ERRORS, OMISSIONS, CHANGE OF PRICE, RENTAL OR OTHER CONDITIONS, PRIOR SALE, LEASE OR FINANCING, OR WITHDRAWAL WITHOUT NOTICE, AND OF ANY SPECIAL LISTING CONDITIONS IMPOSED BY OUR PRINCIPALS. NO WARRANTIES OR REPRESENTATIONS ARE MADE AS TO THE CONDITION OF THE PROPERTY OR ANY HAZARDS CONTAINED THEREIN ARE ANY TO BE IMPLIED. OUTLINES ARE APPROXIMATE AND SHOWN ONLY TO IDENTIFY THE PARCEL IN CONSIDERATION.

# NAI Mertz

 NAI Mertz | 210 E. Street Road, Suite 3B  
Feasterville-Trevose, PA 19053  
215-396-2900 | [naimertz.com](http://naimertz.com)





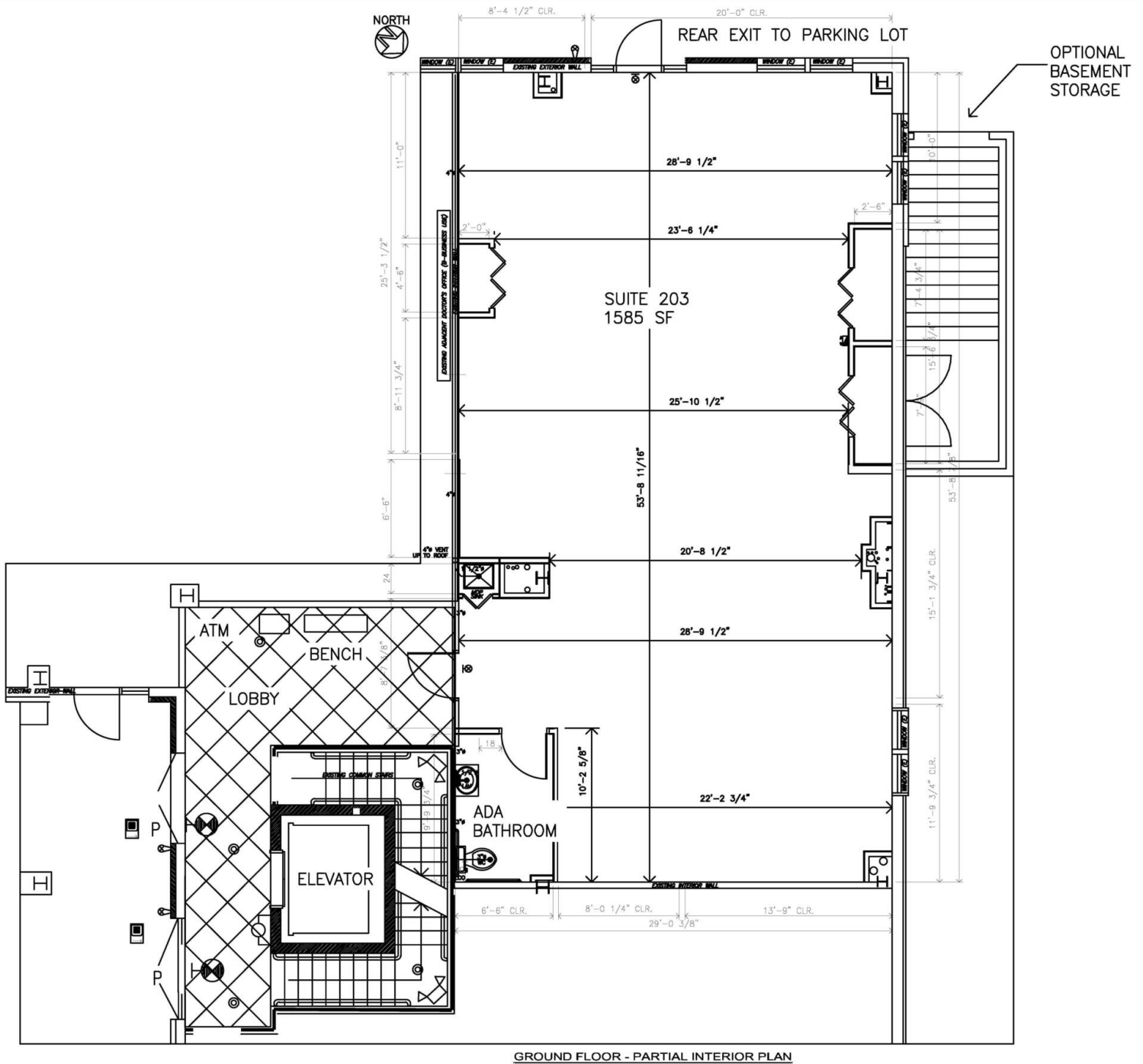
# IVYLAND PROFESSIONAL CENTER

882 Jacksonville Road, Ivyland, PA 18974

 FOR LEASE

 OFFICE

 1,585 SF



## FOR MORE INFORMATION


Zena Charokopos

 215.396.2900 x103

 zena.charokopos@naimertz.com

NAI MERTZ DISCLAIMER: NO WARRANTY OR REPRESENTATION, EXPRESS OR IMPLIED, IS MADE AS TO THE ACCURACY OF THE INFORMATION CONTAINED HEREIN, AND THE SAME IS SUBMITTED SUBJECT TO ERRORS, OMISSIONS, CHANGE OF PRICE, RENTAL OR OTHER CONDITIONS, PRIOR SALE, LEASE OR FINANCING, OR WITHDRAWAL WITHOUT NOTICE, AND OF ANY SPECIAL LISTING CONDITIONS IMPOSED BY OUR PRINCIPALS. NO WARRANTIES OR REPRESENTATIONS ARE MADE AS TO THE CONDITION OF THE PROPERTY OR ANY HAZARDS CONTAINED THEREIN ARE ANY TO BE IMPLIED. OUTLINES ARE APPROXIMATE AND SHOWN ONLY TO IDENTIFY THE PARCEL IN CONSIDERATION.

# NAI Mertz

 NAI Mertz | 210 E. Street Road, Suite 3B  
Feasterville-Trevose, PA 19053  
215-396-2900 | [naimertz.com](http://naimertz.com)





# IVYLAND PROFESSIONAL CENTER

882 Jacksonville Road, Ivyland, PA 18974

 FOR LEASE

 OFFICE

 1,585 SF



## FOR MORE INFORMATION


Zena Charokopos

 215.396.2900 x103

 zena.charokopos@naimertz.com

NAI MERTZ DISCLAIMER: NO WARRANTY OR REPRESENTATION, EXPRESS OR IMPLIED, IS MADE AS TO THE ACCURACY OF THE INFORMATION CONTAINED HEREIN, AND THE SAME IS SUBMITTED SUBJECT TO ERRORS, OMISSIONS, CHANGE OF PRICE, RENTAL OR OTHER CONDITIONS, PRIOR SALE, LEASE OR FINANCING, OR WITHDRAWAL WITHOUT NOTICE, AND OF ANY SPECIAL LISTING CONDITIONS IMPOSED BY OUR PRINCIPALS NO WARRANTIES OR REPRESENTATIONS ARE MADE AS TO THE CONDITION OF THE PROPERTY OR ANY HAZARDS CONTAINED THEREIN ARE ANY TO BE IMPLIED. OUTLINES ARE APPROXIMATE AND SHOWN ONLY TO IDENTIFY THE PARCEL IN CONSIDERATION.

# NAI Mertz

 NAI Mertz | 210 E. Street Road, Suite 3B  
Feasterville-Treose, PA 19053  
215-396-2900 | [naimertz.com](http://naimertz.com)

