

2602 COTTMAN AVENUE

# PHILADELPHIA, PA

2602 COTTMAN AVENUE

±1,000 SF AVAILABLE FOR LEASE

## SECOND GENERATION MEDICAL SPACE



metrocommercial.com | Plymouth Meeting, PA | Mount Laurel, NJ | Miami, FL | Philadelphia, PA

get in touch.

**JONATHAN SPOERL**

Office 215.282.0157

Direct 610.724.0495

[jspoerl@metrocommercial.com](mailto:jspoerl@metrocommercial.com)







## HIGHLY TRAFFICKED AREA WITH GREAT VISIBILITY AND FRONTAGE TO COTTMAN AVE



The information and images contained herein are from sources deemed reliable. However, Metro Commercial Real Estate, Inc. makes no representation whatsoever as to their accuracy or authenticity. Images shown may be modified for illustrative purposes. Images may be out-of-date and not current.

**PHILADELPHIA, PA**  
2602 COTTMAN AVENUE

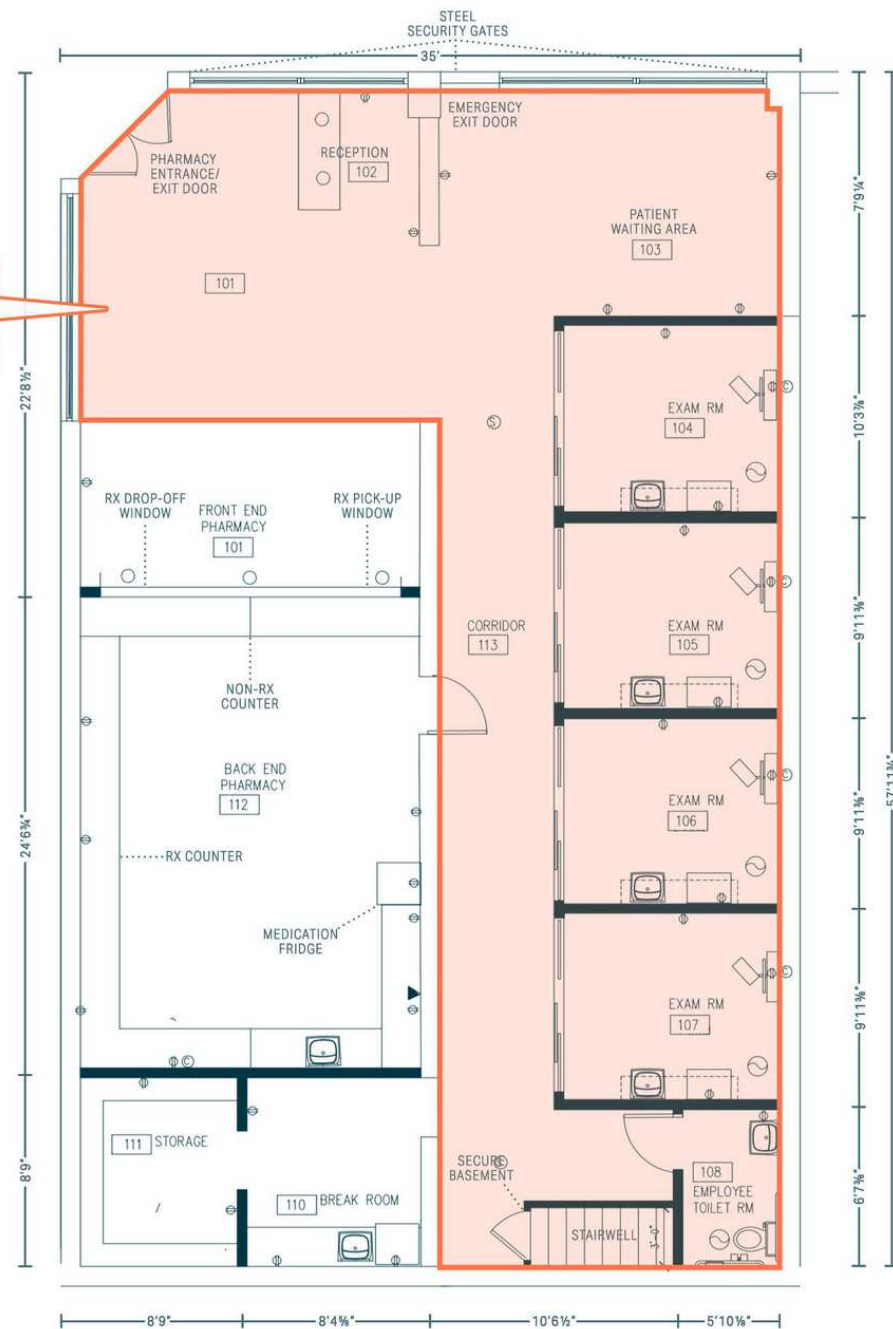


[www.metrocommercial.com](http://www.metrocommercial.com)



# SITE PLAN

±1,000 SF  
AVAILABLE FOR  
SUBLEASE



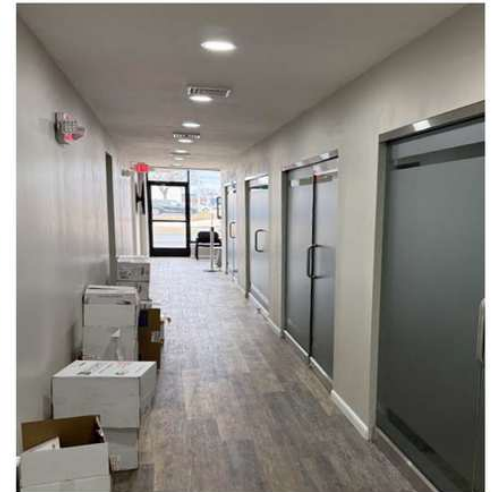
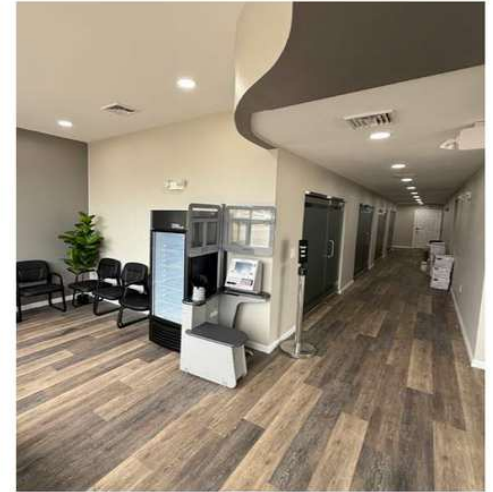
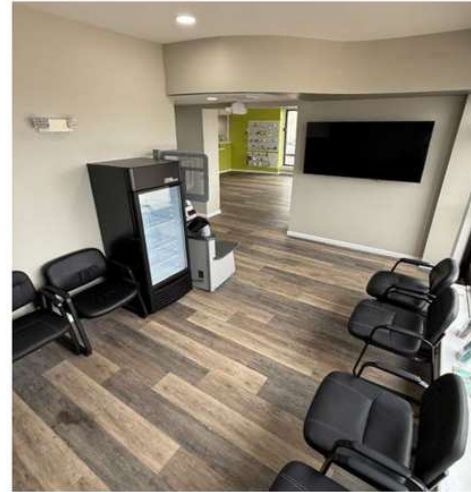
The information and images contained herein are from sources deemed reliable. However, Metro Commercial Real Estate, Inc. makes no representation whatsoever as to their accuracy or authenticity. Images shown may be modified for illustrative purposes. Images may be out-of-date and not current.

**PHILADELPHIA, PA**  
2602 COTTMAN AVENUE



[www.metrocommercial.com](http://www.metrocommercial.com)

## INTERIOR PHOTOS



The information and images contained herein are from sources deemed reliable. However, Metro Commercial Real Estate, Inc. makes no representation whatsoever as to their accuracy or authenticity. Images shown may be modified for illustrative purposes. Images may be out-of-date and not current.

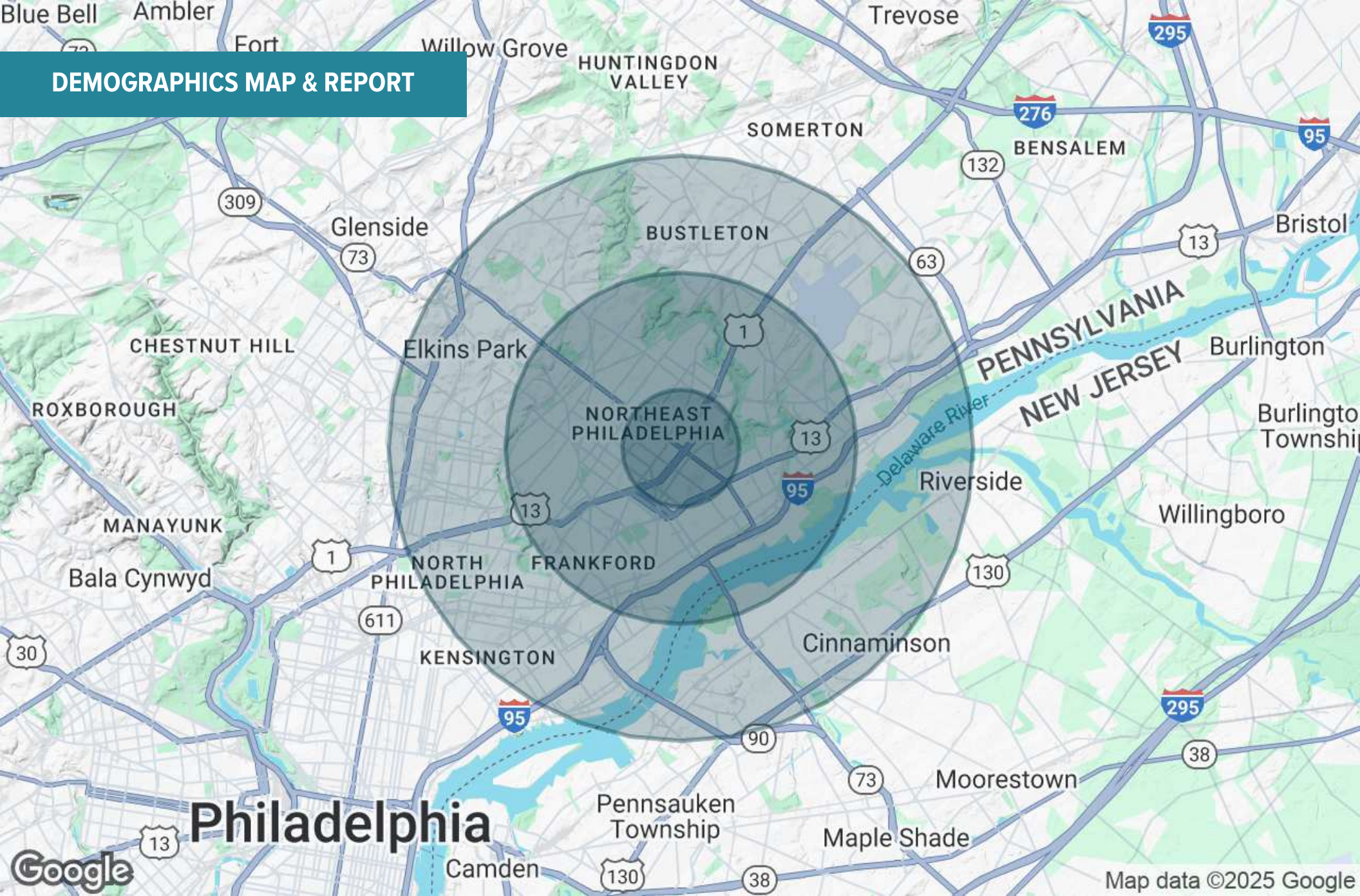
**PHILADELPHIA, PA**  
2602 COTTMAN AVENUE



[www.metrocommercial.com](http://www.metrocommercial.com)



## DEMOGRAPHICS MAP & REPORT



The information and images contained herein are from sources deemed reliable. However, Metro Commercial Real Estate, Inc. makes no representation whatsoever as to their accuracy or authenticity. Images shown may be modified for illustrative purposes. Images may be out-of-date and not current.

**PHILADELPHIA, PA**  
2602 COTTMAN AVENUE



[www.metrocommercial.com](http://www.metrocommercial.com)

## DEMOGRAPHICS MAP & REPORT

POPULATION	1 MILE	3 MILES	5 MILES
Total Population	56,786	319,244	580,159
Average Age	37	38	39
Average Age (Male)	36	37	38
Average Age (Female)	38	39	41
HOUSEHOLDS & INCOME	1 MILE	3 MILES	5 MILES
Total Households	18,692	115,668	213,968
# of Persons per HH	3	2.8	2.7
Average HH Income	\$76,756	\$77,283	\$82,205
Average House Value	\$234,636	\$227,907	\$237,944

*Demographics data derived from AlphaMap*

The information and images contained herein are from sources deemed reliable. However, Metro Commercial Real Estate, Inc. makes no representation whatsoever as to their accuracy or authenticity. Images shown may be modified for illustrative purposes. Images may be out-of-date and not current.

**PHILADELPHIA, PA**  
2602 COTTMAN AVENUE



[www.metrocommercial.com](http://www.metrocommercial.com)