

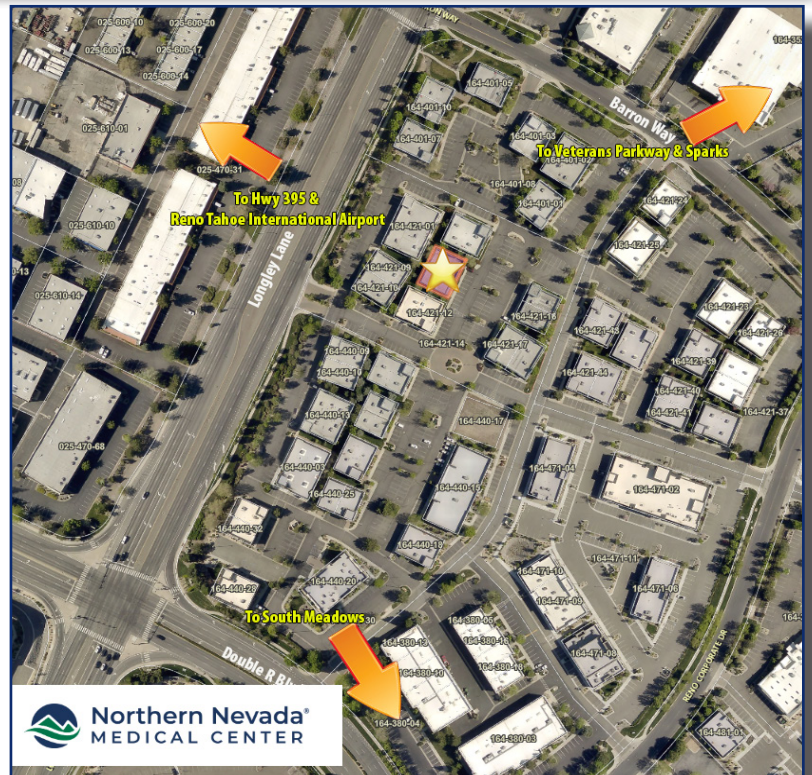


PROPERTY OVERVIEW

Available Space: 2,104 Square Feet | Suite B
2,064 Square Feet | Suite A

Price: **\$2.10 | MG**

- Overview:**
- Suite A: 4 offices, break room, conference room
 - Suite B: open floor area, break room, conference room
 - Lease either side or entire space for a total of 4,168 Sq. Ft.
 - Excellent South Reno location close to the new Northern NV Sierra Medical Center
 - Easy access from Double R and Longley Lane



KEVIN ANNIS, SIOR, CCIM BROKER/PRINCIPAL
KANNIS@ARCHCRESTNV.COM
C: 775.742.2539
NV LIC B.1000617.LLC

MIKE VAN BLARICOM PRINCIPAL
MIKEV@ARCHCRESTNV.COM
C: 775.250.9531
NV LIC S.0066330

MELANIE STEWART TRANSACTION COORDINATOR
MSTEWART@ARCHCRESTNV.COM
P: 775.852.9800 x 205
NV LIC S.0061263

775.852.9800
WWW.ARCHCRESTNV.COM

ArchCrest Commercial Partners • 5560 Longley Lane, Suite 100, Reno, NV 89511 • Fax: (775) 850-4251

The information contained herein was obtained from sources believed reliable; however, ArchCrest Commercial Partners makes no guarantees, warranties, or representations as to the completeness or accuracy thereof. The presentation of this property is submitted subject to errors, omissions, change of price or terms prior to sale or lease, or withdrawal without notice.



FOR SUBLEASE

5422 Longley Lane #A & #B | Reno, NV

SUITE A



KEVIN ANNIS, SIOR, CCIM
BROKER/PRINCIPAL
KANNIS@ARCHCRESTNV.COM
C: 775.742.2539
NV LIC B.1000617.LLC

MIKE VAN BLARICOM
PRINCIPAL
MIKEV@ARCHCRESTNV.COM
C: 775.250.9531
NV LIC S.0066330

MELANIE STEWART
TRANSACTION COORDINATOR
MSTEWART@ARCHCRESTNV.COM
P: 775.852.9800 x 205
NV LIC S.0061263

775.852.9800
WWW.ARCHCRESTNV.COM

ArchCrest Commercial Partners • 5560 Longley Lane, Suite 100, Reno, NV 89511 • Fax: (775) 850-4251

The information contained herein was obtained from sources believed reliable; however, ArchCrest Commercial Partners makes no guarantees, warranties, or representations as to the completeness or accuracy thereof. The presentation of this property is submitted subject to errors, omissions, change of price or terms prior to sale or lease, or withdrawal without notice.



FOR SUBLEASE

5422 Longley Lane #A & #B | Reno, NV

SUITE B



KEVIN ANNIS, SIOR, CCIM
BROKER/PRINCIPAL
KANNIS@ARCHCRESTNV.COM
C: 775.742.2539
NV LIC B.1000617.LLC

MIKE VAN BLARICOM
PRINCIPAL
MIKEV@ARCHCRESTNV.COM
C: 775.250.9531
NV LIC S.0066330

MELANIE STEWART
TRANSACTION COORDINATOR
MSTEWART@ARCHCRESTNV.COM
P: 775.852.9800 x 205
NV LIC S.0061263

775.852.9800
WWW.ARCHCRESTNV.COM

ArchCrest Commercial Partners • 5560 Longley Lane, Suite 100, Reno, NV 89511 • Fax: (775) 850-4251

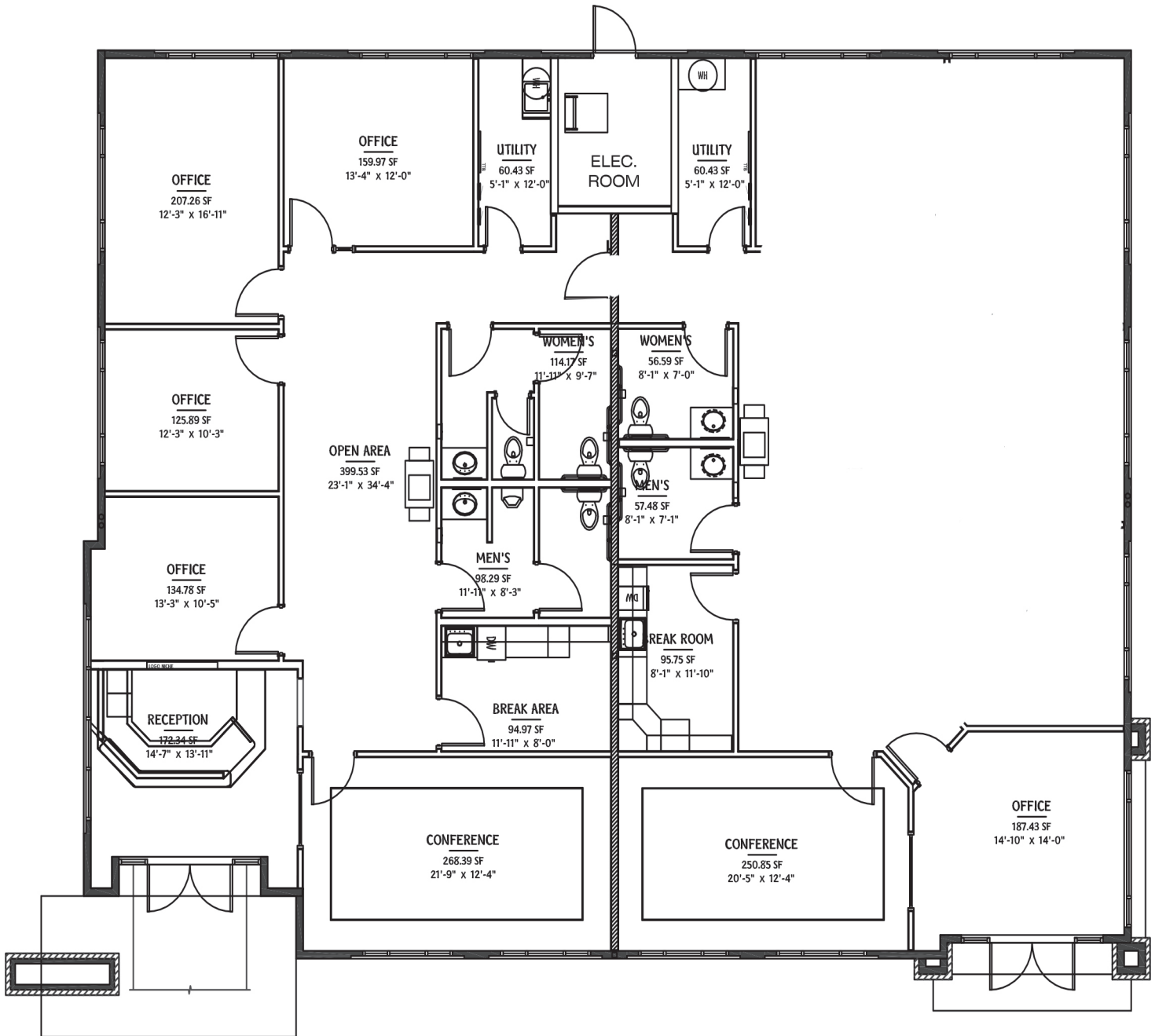
The information herein was obtained from sources believed reliable; however, ArchCrest Commercial Partners makes no guarantees, warranties, or representations as to the completeness or accuracy thereof. The presentation of this property is submitted subject to errors, omissions, change of price or terms prior to sale or lease, or withdrawal without notice.



FOR SUBLEASE

5422 Longley Lane #A & #B | Reno, NV

SUITE B



KEVIN ANNIS, SIOR, CCIM BROKER/PRINCIPAL
KANNIS@ARCHCRESTNV.COM
C: 775.742.2539
NV LIC B.1000617.LLC

MIKE VAN BLARICOM PRINCIPAL
MIKEV@ARCHCRESTNV.COM
C: 775.250.9531
NV LIC S.0066330

MELANIE STEWART TRANSACTION COORDINATOR
MSTEWART@ARCHCRESTNV.COM
P: 775.852.9800 x 205
NV LIC S.0061263

775.852.9800
WWW.ARCHCRESTNV.COM

ArchCrest Commercial Partners • 5560 Longley Lane, Suite 100, Reno, NV 89511 • Fax: (775) 850-4251
The information contained herein was obtained from sources believed reliable; however, ArchCrest Commercial Partners makes no guarantees, warranties, or representations as to the completeness or accuracy thereof. The presentation of this property is submitted subject to errors, omissions, change of price or terms prior to sale or lease, or withdrawal without notice.