

# FOR LEASE

## PROFESSIONAL OFFICE SPACE AVAILABLE FOR LEASE



COMMERCIAL REAL ESTATE SERVICES  
PASADENA



**1025 W Arrow Hwy, Ste 103  
Glendora, CA 91740**

**CONTACT**



**CHRIS JOHNSON**

Senior Vice President

[chris.johnson@lee-associates.com](mailto:chris.johnson@lee-associates.com)

626.240.2786

License ID 01934154

All information furnished regarding property for sale, rental or financing is from sources deemed reliable, but no warranty or representation is made to the accuracy thereof and same is submitted to errors, omissions, change of price, rental or other conditions prior to sale, lease or financing or withdrawal without notice. No liability of any kind is to be imposed on the broker herein.

## OFFERING INFORMATION

+ Asking Rate:	\$1.75 P/SF/MG
+ Suite Size:	±1,500 SF (Suite 103)
+ Total Building SF:	±19,510 SF
+ Year Built:	1983
+ Parking Ratio:	4:1000
+ Parcel Number:	8630-015-029
+ Zoning:	PZR

## PROPERTY HIGHLIGHTS

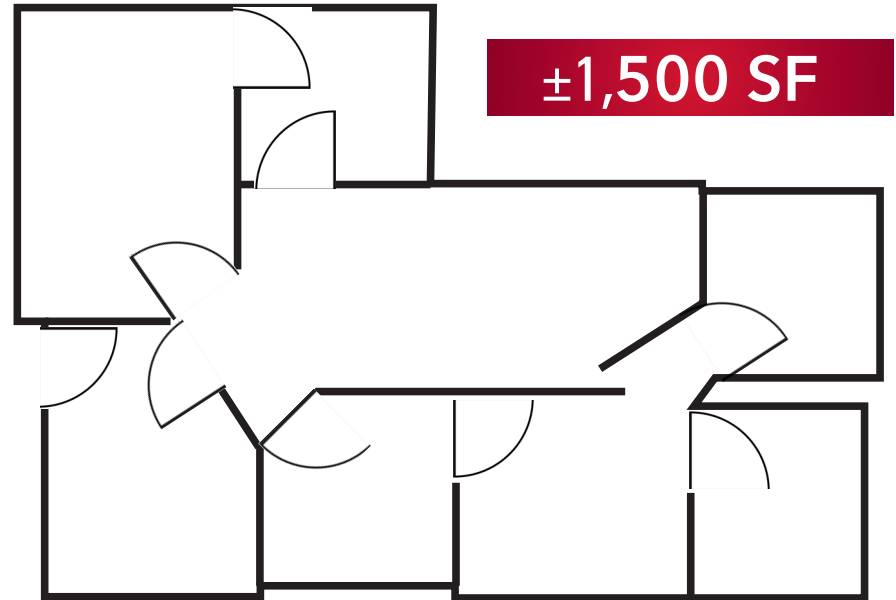
- + Wonderful nearby ammentieis
- + Functional floorplan
- + Move in ready condition



FOR LEASE  
**PROFESSIONAL OFFICE SPACE**

1025  
**W ARROW HIGHWAY**  
GLENDDORA CA 91740

**SUITE 103 + FLOOR PLAN**



FOR LEASE  
**PROFESSIONAL OFFICE SPACE**

1025  
**W ARROW HIGHWAY**  
GLENDDORA CA 91740

**LOCATION HIGHLIGHTS**

+ Great access to 210 and 10 freeway

