

NOW LEASING!



Insalaco Development Group is a family-owned real estate enterprise with over 50 years of experience in development, acquisition, and management of retail, industrial, and office assets in North America.

441-447 N MAIN STREET

441-447 N Main Street, Pittston, PA 18640



Property Description

441-445 N Main Street is a recently renovated 11,000 SF commercial property located in Pittston, PA.

This property is the perfect place for a retail, office, or medical occupant!



Prime Location

- 10 minute drive from Interstate-81 and PA Turnpike
- Centrally located between Luzerne, Lackawanna & Wyoming Counties



Key Demographics*

- **Daily traffic volume: 8,412**
- **Population**
 - 3 miles: 40,262
 - 5 miles: 68,014
 - 10 miles: 269,664
- **Avg HH income (5 miles): \$73,545**

*according to CoStar and Placer.ai research



Call Julia for more information!



(570)-883-0936 x 324



490 N. Main Street, Suite 101
Pittston, PA 18640



insalacodev.com



leasing@insalacodev.com

441-445 N MAIN STREET

DEMOGRAPHICS*

	3 Mile	5 Mile	10 Mile
Population	40,262	68,014	269,664
Total Households	17,617	29,527	112,650
Daytime Employees	15,671	28,226	148,685
Average Household Income	\$69,088	\$73,545	\$67,975
Total Consumer Spending (\$)	\$486.8M	\$842.7M	\$3B

*according to CoStar and Placer.ai analytics



Insalaco Development Group is a family-owned real estate enterprise with over 50 years of experience in development, acquisition, and management of retail, industrial, and office assets in North America.



Call Julia for more information!



(570)-883-0936 x 324



490 N. Main Street, Suite 101
Pittston, PA 18640



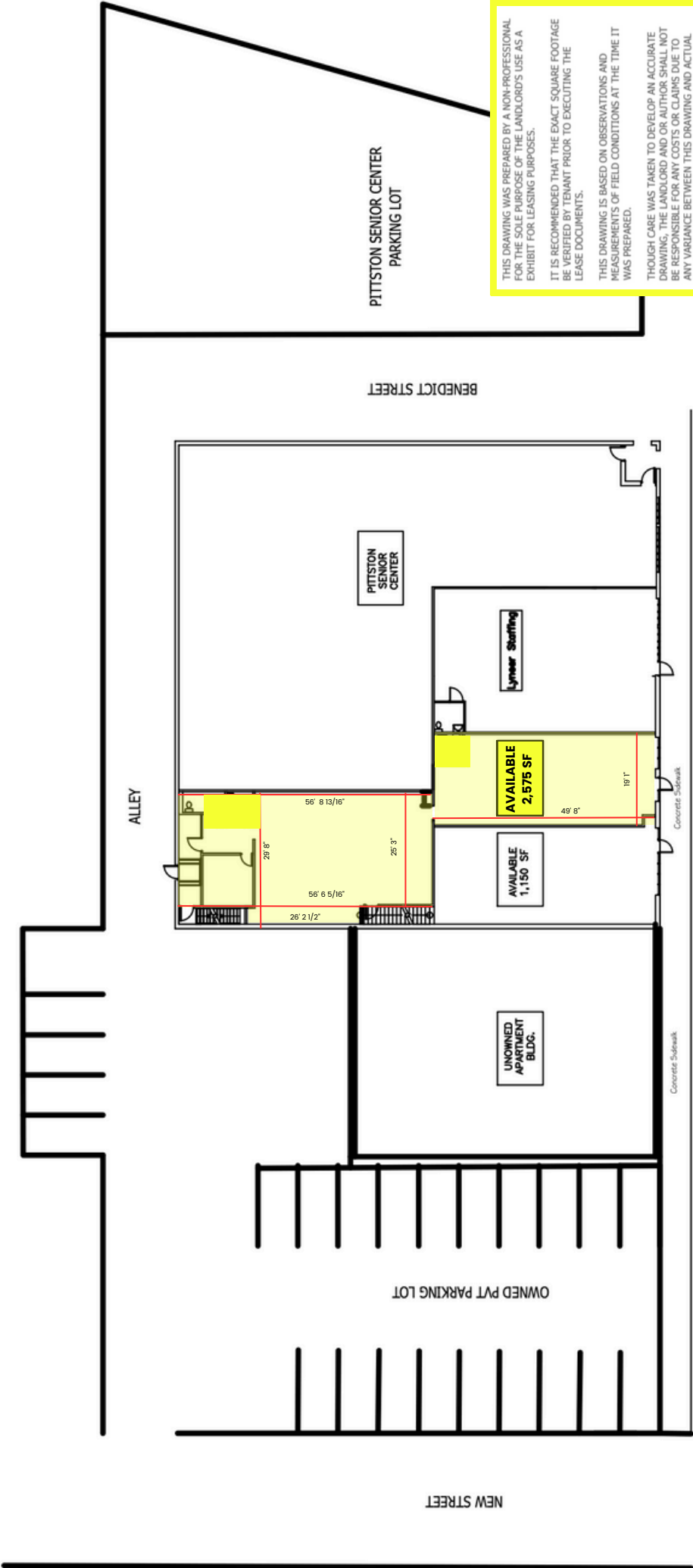
insalacodev.com



leasing@insalacodev.com

441-445 N MAIN STREET

SITE PLAN



NORTH MAIN STREET (Traffic Count 10,239 VPD)

PITTSTON SENIOR CENTER
PARKING LOT

THIS DRAWING WAS PREPARED BY A NON-PROFESSIONAL FOR THE SOLE PURPOSE OF THE LANDLORD'S USE AS A EXHIBIT FOR LEASING PURPOSES.

IT IS RECOMMENDED THAT THE EXACT SQUARE FOOTAGE BE VERIFIED BY TENANT PRIOR TO EXECUTING THE LEASE DOCUMENTS.

THIS DRAWING IS BASED ON OBSERVATIONS AND MEASUREMENTS OF FIELD CONDITIONS AT THE TIME IT WAS PREPARED.

THOUGH CARE WAS TAKEN TO DEVELOP AN ACCURATE DRAWING, THE LANDLORD AND/OR AUTHOR SHALL NOT BE RESPONSIBLE FOR ANY COSTS OR CLAIMS DUE TO ANY VARIANCE BETWEEN THIS DRAWING AND ACTUAL FIELD CONDITIONS.

BECAUSE METHODS OF MEASUREMENT, DEGREES OF ACCURACY AND CONDITIONS UNDER WHICH MEASUREMENTS ARE MADE CAN VARY, AND BECAUSE CHANGES MAY HAVE OCCURRED SUBSEQUENT TO PREPARATION OF THIS DRAWING, USERS OF THIS DRAWING ARE ADVISED TO FURTHER VERIFY IN THE FIELD ANY AND ALL DIMENSIONS OR CONDITIONS THAT MAY HAVE A MATERIAL EFFECT ON THE USE OR MODIFICATION OF THE SPACE REPRESENTED HERE.

USE OF THIS DRAWING CONSTITUTES AGREEMENT TO IDENTIFY, HOLD HARMLESS AND DEFEND THE LANDLORD OF FROM AND AGAINST ANY AND ALL CLAIMS ARISING OUT OF THE USE OF THIS DRAWING.