

\$0.99 PSF for First 3 Months on 3-Year Lease



FOR LEASE | SAN FERNANDO PLAZA

RETAIL / OFFICE SUITES AVAILABLE

23630-23638 Newhall Avenue, Santa Clarita, CA 91321
+/- 1,080 to 2,630 SF Available | \$1.90 to \$2.00 PSF Modified Gross

CONTACTS:



Dean Cox
Senior Vice President | DRE #01331788
Office: 661.295.9300
Cell: 661.644.6120
Dean@crissmancommercial.com



Aaron Avila
Senior Vice President | DRE #02037778
Office: 661.295.9300
Cell: 661.993.9873
Aaron@crissmancommercial.com

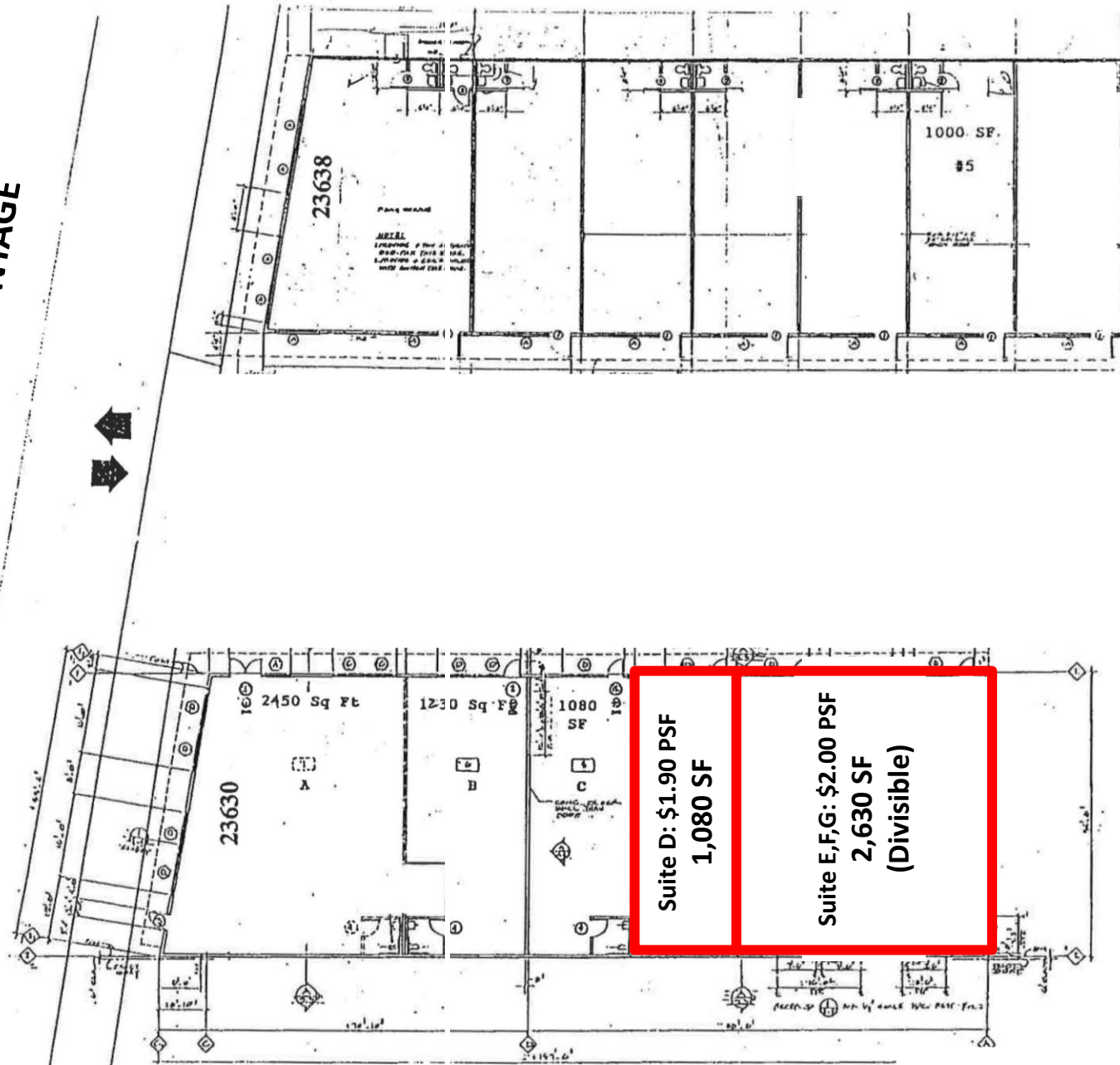
SAN FERNANDO PLAZA 23630-23638 Newhall Avenue Santa Clarita, CA 91321

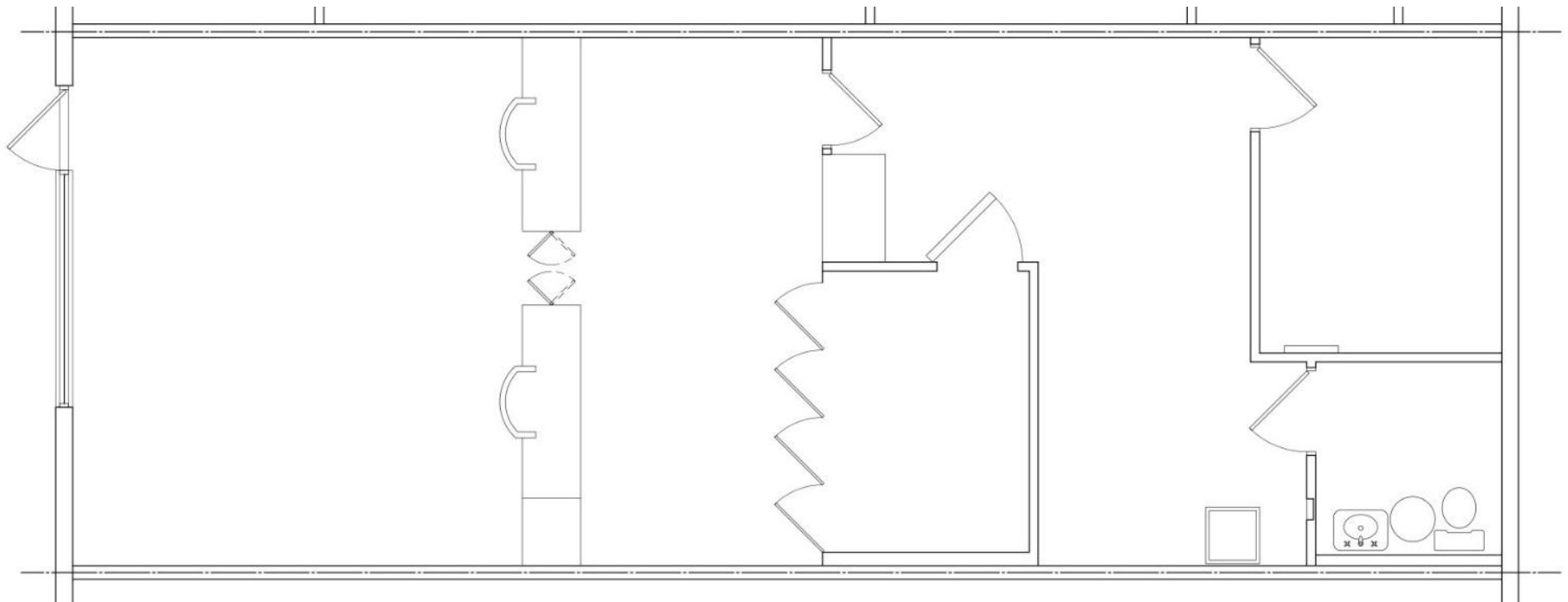
RE/MAX - Crissman Commercial Services is proud to present San Fernando Plaza. Join Town & Country Liquor and Las Originales Mexican Bar & Grill.

- Approximately 1,080 to 2,630 SF (**Divisible**) available
- Neighborhood center suitable for retail or office use (Suite E,F,G currently built out as office)
- Easy access to CA State Route 14
- Flexible terms and competitive rates
- Located just ½ a mile from Downtown Newhall, Santa Clarita's premier retail and arts district
- Professionally managed and maintained

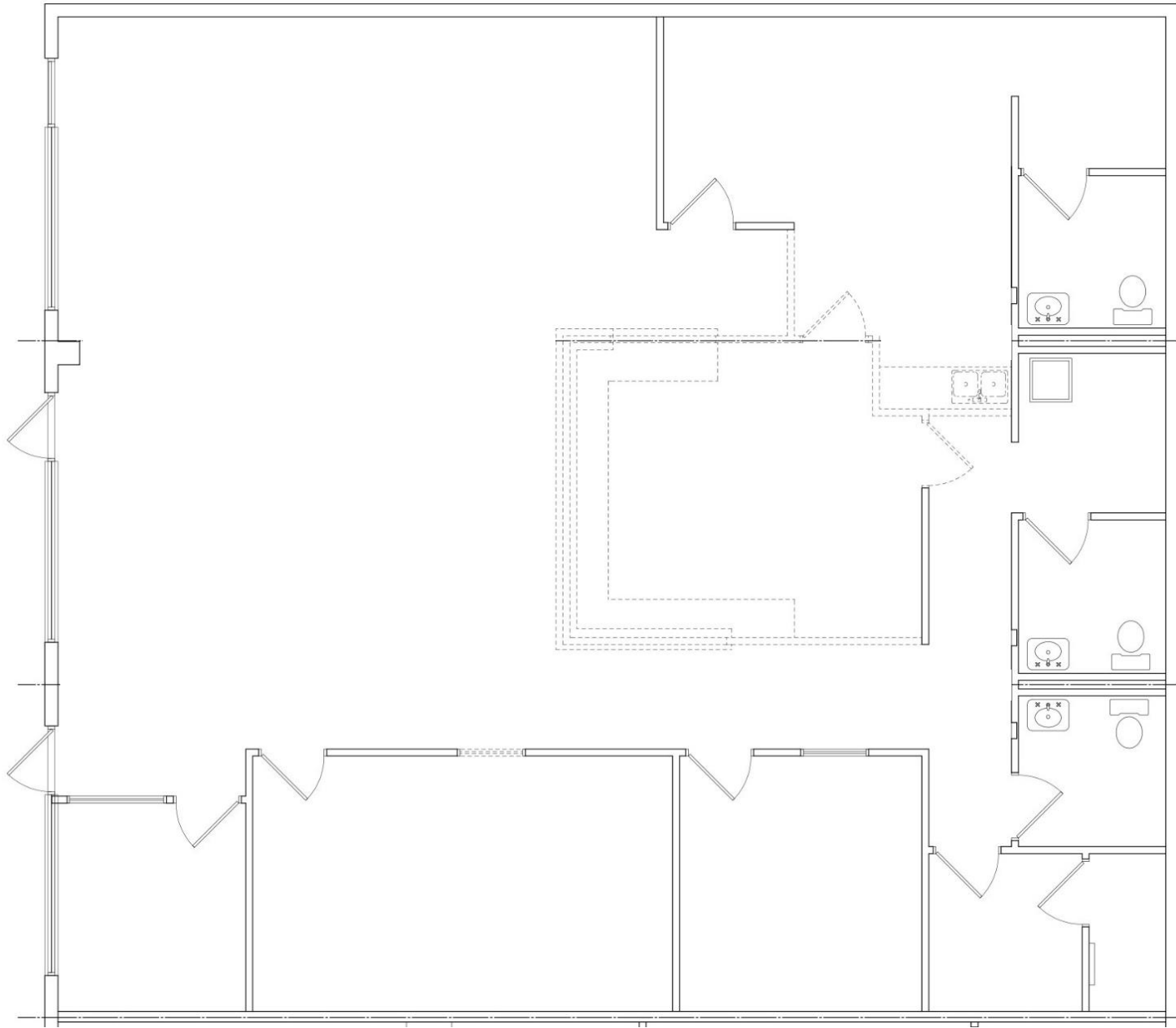


NEWHALL AVENUE - FRONTAGE





Current As-Built Configuration



Current As-Built Configuration