



For Lease

933 Beville Road

South Daytona, FL 32119



OFFERING SUMMARY

LEASE RATE: \$13.00 - 18.00 SF/yr (NNN)

NUMBER OF UNITS: 33

AVAILABLE SF: 1,000 - 2,100 SF

LOT SIZE: 3.8 Acres

BUILDING SIZE: 39,600 SF

DEMOGRAPHICS	0.25 MILES	0.5 MILES	1 MILE
TOTAL HOUSEHOLDS	256	1,130	4,972
TOTAL POPULATION	501	2,126	9,553
AVERAGE HH INCOME	\$45,157	\$43,678	\$43,254

PROPERTY DESCRIPTION

1,050-2,100 SF Office/Flex Space For Lease

Air Conditioned

Located in a Clean, Well-Kept Industrial Park

Plenty of Parking

East of the Beville Rd and Nova Rd Intersection in South Daytona

Landlord is willing to Convert Spaces to Add Warehouse Space.

\$6.68/SF Pass Through Expenses

PROPERTY HIGHLIGHTS

- Available Units:
- 101C - 1,200 SF Front Retail Unit
- 102EF - 2,100 SF - Open Flex Space with Two 12 Foot Roll Up Doors and Two Entry Doors
- 103J - 1,050 SF - Hood/Grease Trap with Access to a 12 Foot Roll Up Door
- 102D - 1,050 SF Office/Warehouse with Access to a Roll Up Door
- 103H - 1,050 SF Office with Access to a 12 Foot Roll Up Door



Carl W. Lentz IV, MBA, CCIM

Managing Director

O: 386.566.3726

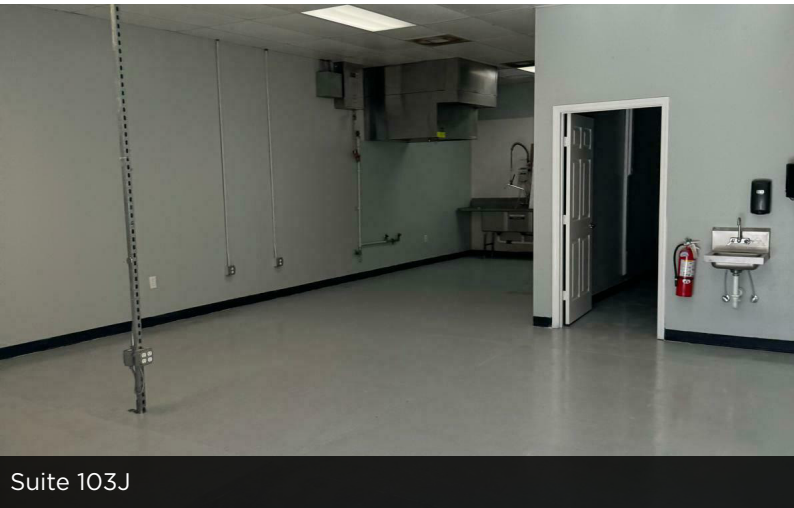
carl.lentz@svn.com

FL #BK3068067

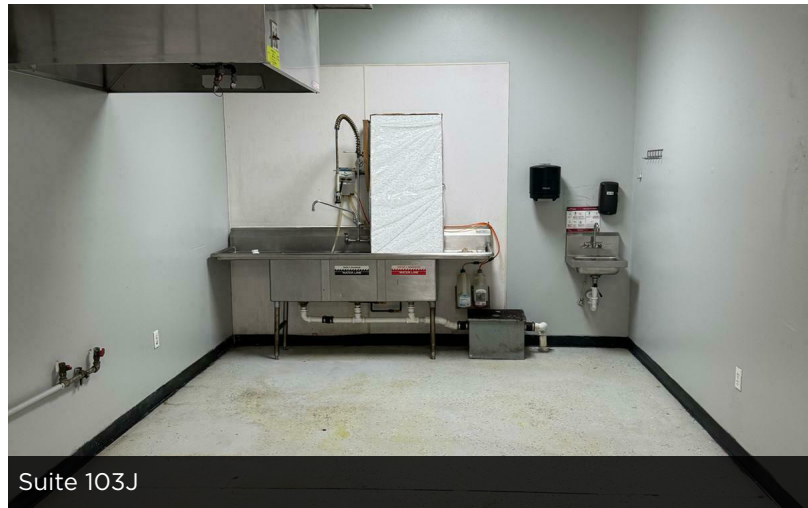


Flex Spaces

933 Beville Road
South Daytona, FL 32119



Suite 103J



Suite 103J



Suite 103H



Suite 103H



Carl W. Lentz IV, MBA, CCIM
Managing Director
O: 386.566.3726
carl.lentz@svn.com
FL #BK3068067



Front Retail Space

933 Beville Road, Suite 101C

South Daytona, FL 32119



Carl W. Lentz IV, MBA, CCIM

Managing Director

O: 386.566.3726

carl.lentz@svn.com

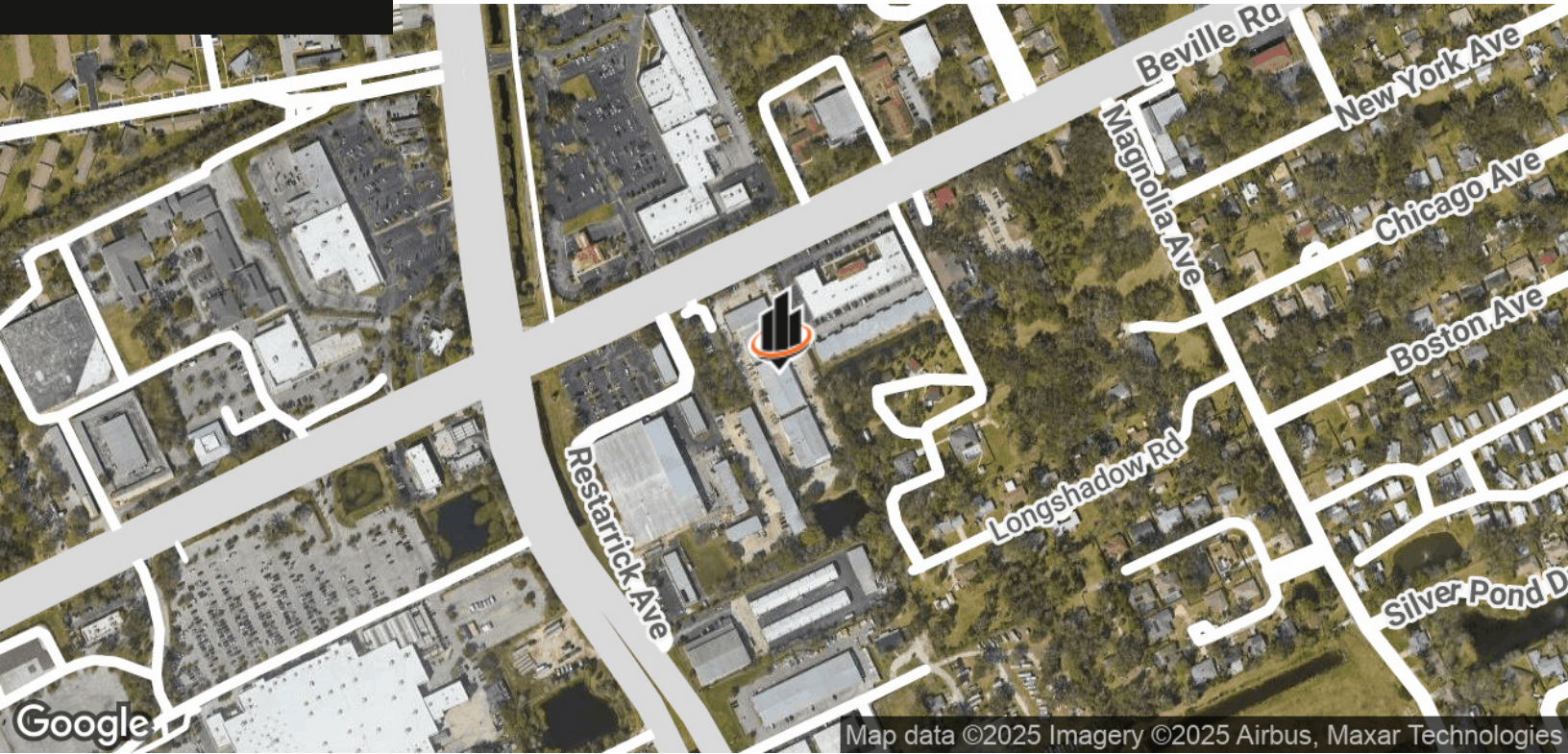
FL #BK3068067



For Lease

933 Beville Road

South Daytona, FL 32119



Carl W. Lentz IV, MBA, CCIM

Managing Director

O: 386.566.3726

carl.lentz@svn.com

FL #BK3068067

