

12 vesey street



Premises

GROUND FLOOR

4,594 sf

LOWER LEVEL

5,003 sf

POSSESSION

Immediate

TERM

Long Term

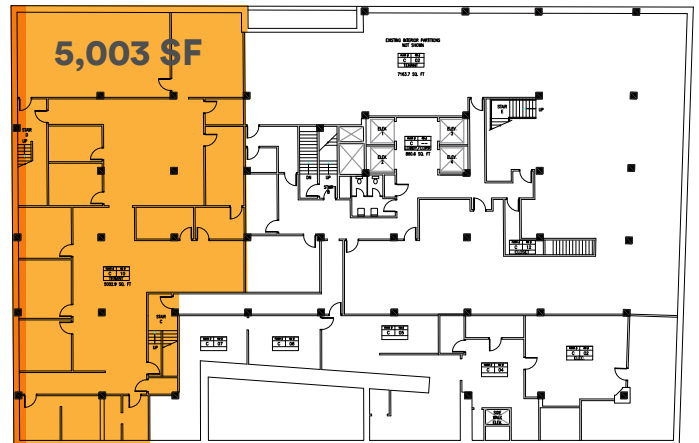
COMMENTS

» Previously Staples

GROUND FLOOR



LOWER LEVEL



VESEY STREET

BROADWAY

AROUND THE NEIGHBORHOOD



con- tact



Michael Kadosh

212 984 7113

michael.kadosh@cbre.com

Lon Rubackin

212 984 8195

lon.rubackin@cbre.com

Bevan Cohen

212 895 09451

bevan.cohen@cbre.com

© 2023 CBRE, Inc. All rights reserved. This information has been obtained from sources believed reliable, but has not been verified for accuracy or completeness. You should conduct a careful, independent investigation of the property and verify all information. Any reliance on this information is solely at your own risk. CBRE and the CBRE logo are service marks of CBRE, Inc. All other marks displayed on this document are the property of their respective owners, and the use of such logos does not imply any affiliation with or endorsement of CBRE.

CBRE