

Industrial | For Lease

CBRE

17423 W. Jefferson Ave

Riverview, Michigan 48193



17423 W. Jefferson Ave,
Riverview, MI

For Lease

Aerial



© Mapbox, © Open

Property Features

490,394

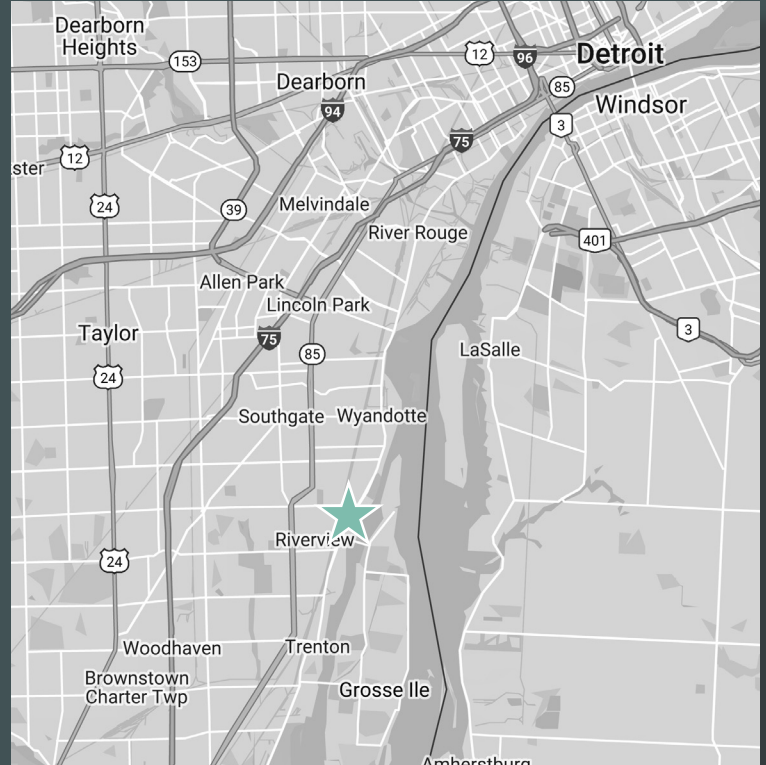
Square Footage

Wayne

County

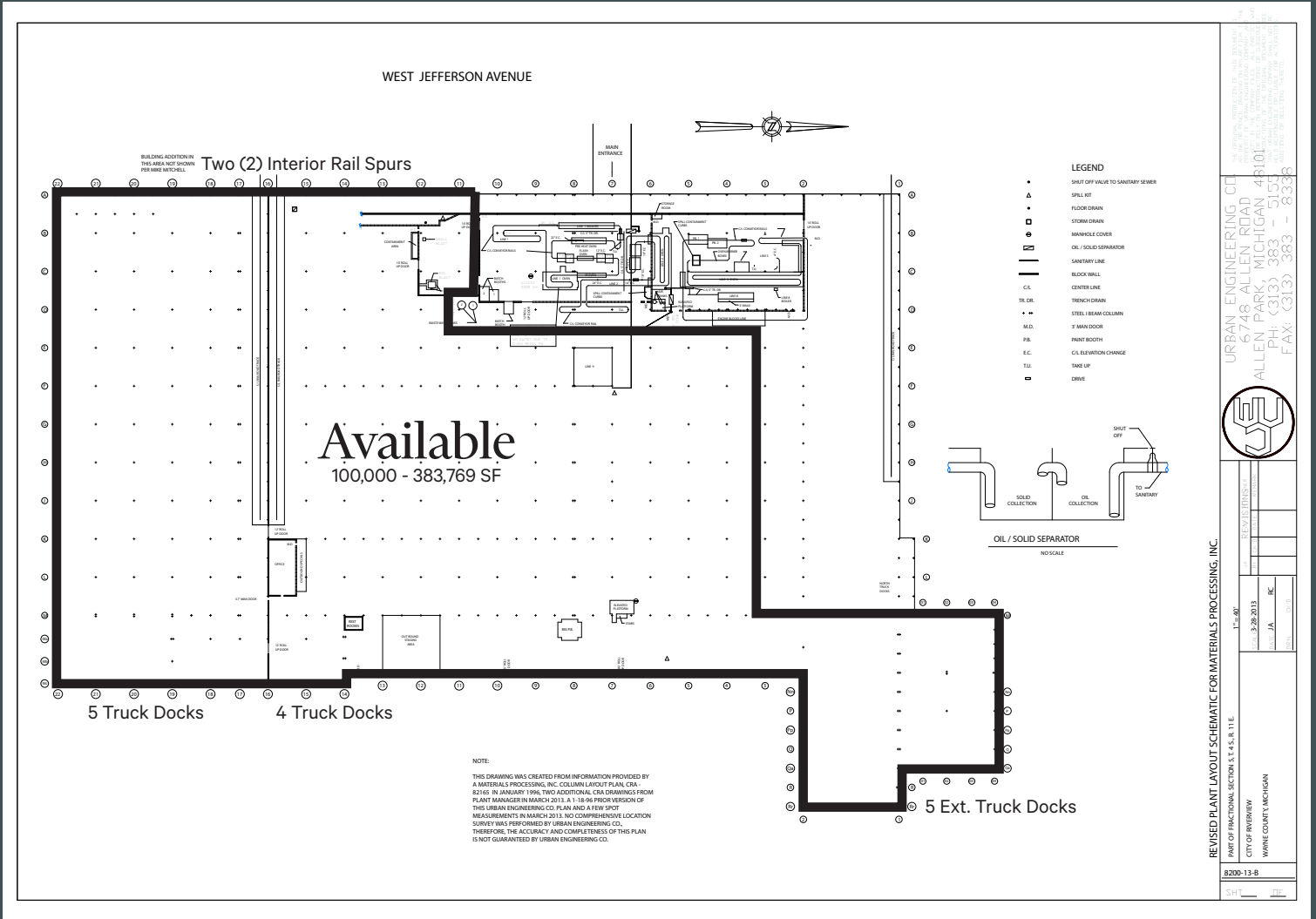
M2

Zoning



Total Building Size:	490,394 SF	Power:	Heavy
Available SF:	100,000 - 383,769 SF	Sprinklers:	Yes
Office SF:	To Suit	HVAC:	Gas
Acreage:	36.40 AC	Lighting:	Upgraded Florescent
Ceiling Height:	18' - 38'	Construction:	Block/Metal Panel
Truck Docks:	18 (Bldg. Total)	Lease Rate:	\$4.95 PSF NNN
Grade Doors:	4	Sale Price:	Sale Possible
Cranes:	3 10-Ton Cranes; 97' bay	Real Property Taxes:	\$0.25 PSF (2021)
Rail:	Yes, three active rail spurs and providers (CN, Conrail (NFS & CSX))		
Comments:	Foreign Trade Zone designation with excellent rail access. Possible deep water port access via the Trenton Channel. Ample outdoor storage.		

Building Plan



Contact Us

Eugene J. Agnone III
Senior Vice President
+1 248 351 2024
eugene.agnone@cbre.com

Lauren Scarpace
Executive Vice President
+1 248 351 2060
lauren.scarpace@cbre.com

Blake Burstein
Associate
+1 248 936 6890
blake.burstein@cbre.com

© 2021 CBRE, Inc. All rights reserved. This information has been obtained from sources believed reliable, but has not been verified for accuracy or completeness. You should conduct a careful, independent investigation of the property and verify all information. Any reliance on this information is solely at your own risk. CBRE and the CBRE logo are service marks of CBRE, Inc. All other marks displayed on this document are the property of their respective owners, and the use of such logos does not imply any affiliation with or endorsement of CBRE. Photos herein are the property of their respective owners. Use of these images without the express written consent of the owner is prohibited.