

# FOR SALE

±48,690 SF on ±12.9 Acres

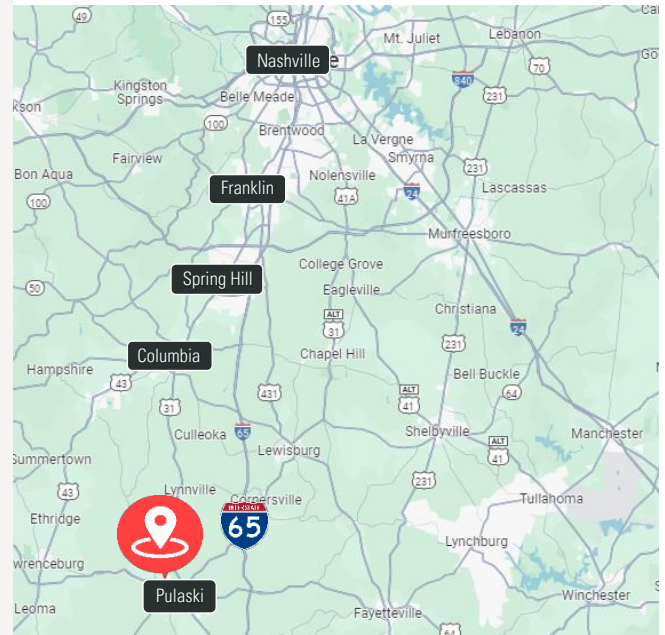
Prime Opportunity to Purchase an Industrial Building in the Giles County Industrial Park

2320 Industrial Loop Rd, Pulaski, TN 38478



## HIGHLIGHTS

- ±48,690 SF Industrial building on ±12.9 Acres
- Sale Price: \$1,200,000
- Located within the Giles County Industrial Park
- Former site of Tennessee Valley Recycling
- Main Building:
  - 120' x 280'
  - Clear heights: 30' at peak; 25' at eave
  - Center row of columns with 20' spacing
- Expansion Area 1:
  - 50' X 120'
  - Clear heights: 28' at peak; 25' at eave
- Expansion Area 2:
  - 40' x 140'
  - Clear heights: 28' at peak; 25' at eave
- Exterior open faced storage building:
  - 180' x 40'
  - Clear heights: 26' at open front; 22' at back
- (3) 10-Ton cranes on site
- Ramped exterior dock on site for outside loading



**Jamie Phillips**  
Vice President  
C: 615.517.4607  
jphillips@charleshawkinsco.com

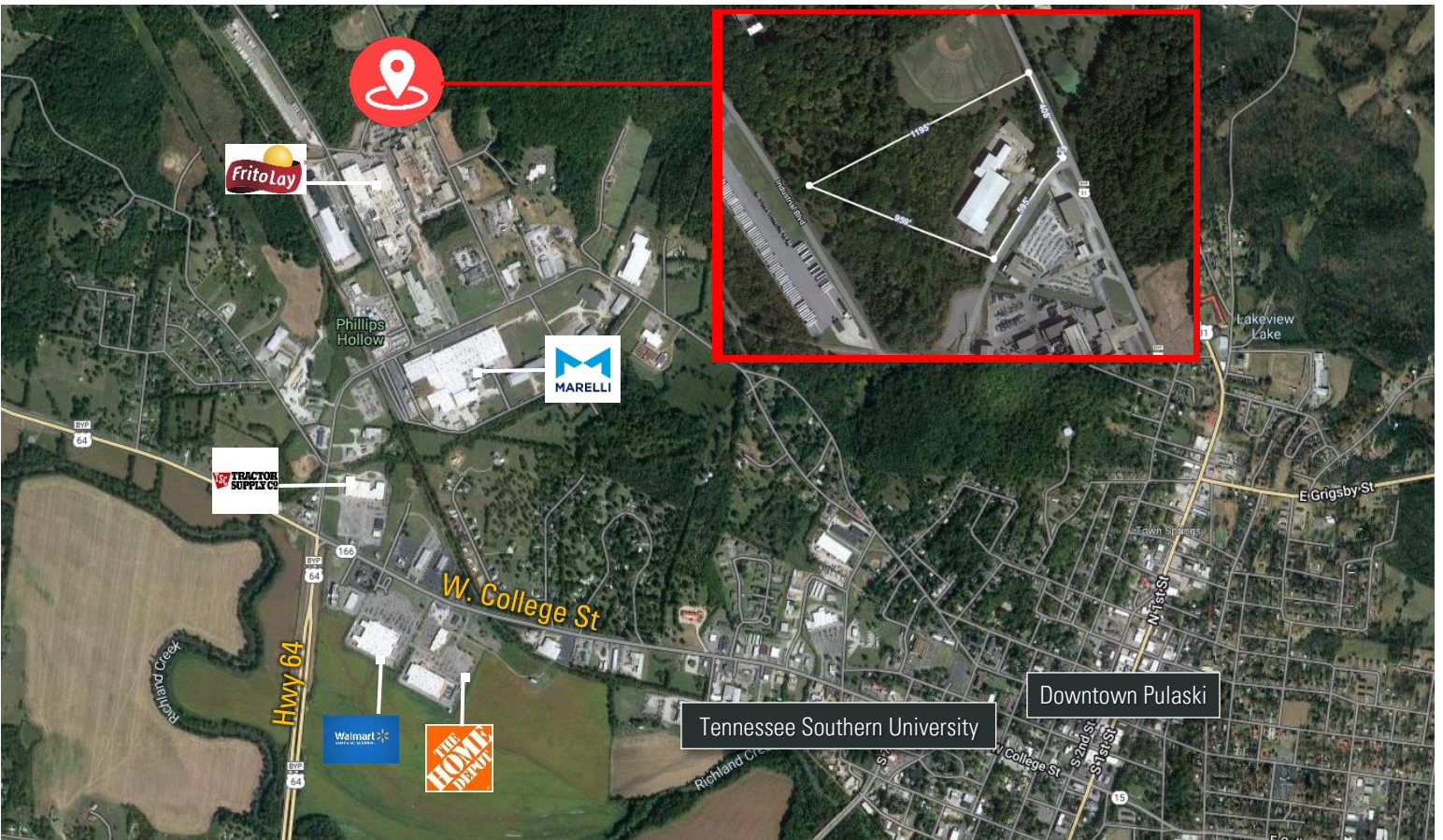
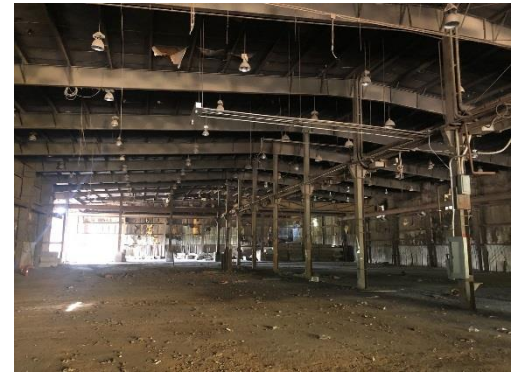
**J.P. Lowe, CCIM**  
First Vice President  
O: 615.345.7212  
jplowe@charleshawkinsco.com

Charles Hawkins Co.  
760 Melrose Avenue  
Nashville, TN 37211  
T: 615.256.3189 / F: 615.254.4026  
charleshawkinsco.com

**For Sale**  
±48,690 SF  
Industrial Building

2320 Industrial Loop Road  
Pulaski, TN 38478  
Giles County

**CHARLES  
HAWKINS CO.**



**Jamie Phillips**  
Vice President  
C: 615.517.4607  
jphillips@charleshawkinsco.com

**J.P. Lowe, CCIM**  
First Vice President  
O: 615.345.7212  
jplowe@charleshawkinsco.com

Charles Hawkins Co.  
760 Melrose Avenue  
Nashville, TN 37211  
T: 615.256.3189 / F: 615.254.4026  
charleshawkinsco.com