



**4474 Liberty Highway, Suite C
Anderson, SC 29621**

Property Features

- ±4,672 SF of Flex Space
- ±3,038 SF Office and ±1,634 SF Warehouse
- (1) 10 x 10 Roll Up Door
- Clear Height: 12' - 15'6"
- Excellent Parking
- High Visibility from Hwy 178
- Zoned S-1 | Anderson County
- ±0.5 Miles from I-85 @ Exit 21
- Easy access to Greenville, Atlanta, Charlotte
- Lease rate: \$12.00 per SF NNN



For more information:

Hunter Garrett

864-505-6813

hgarrett@naief.com

John Staunton

864-905-1112

jstaunton@naief.com

Josh Kenyon

704-964-2181

jkenyon@naief.com

Interior Photos

4474 Liberty Hwy
Suite C

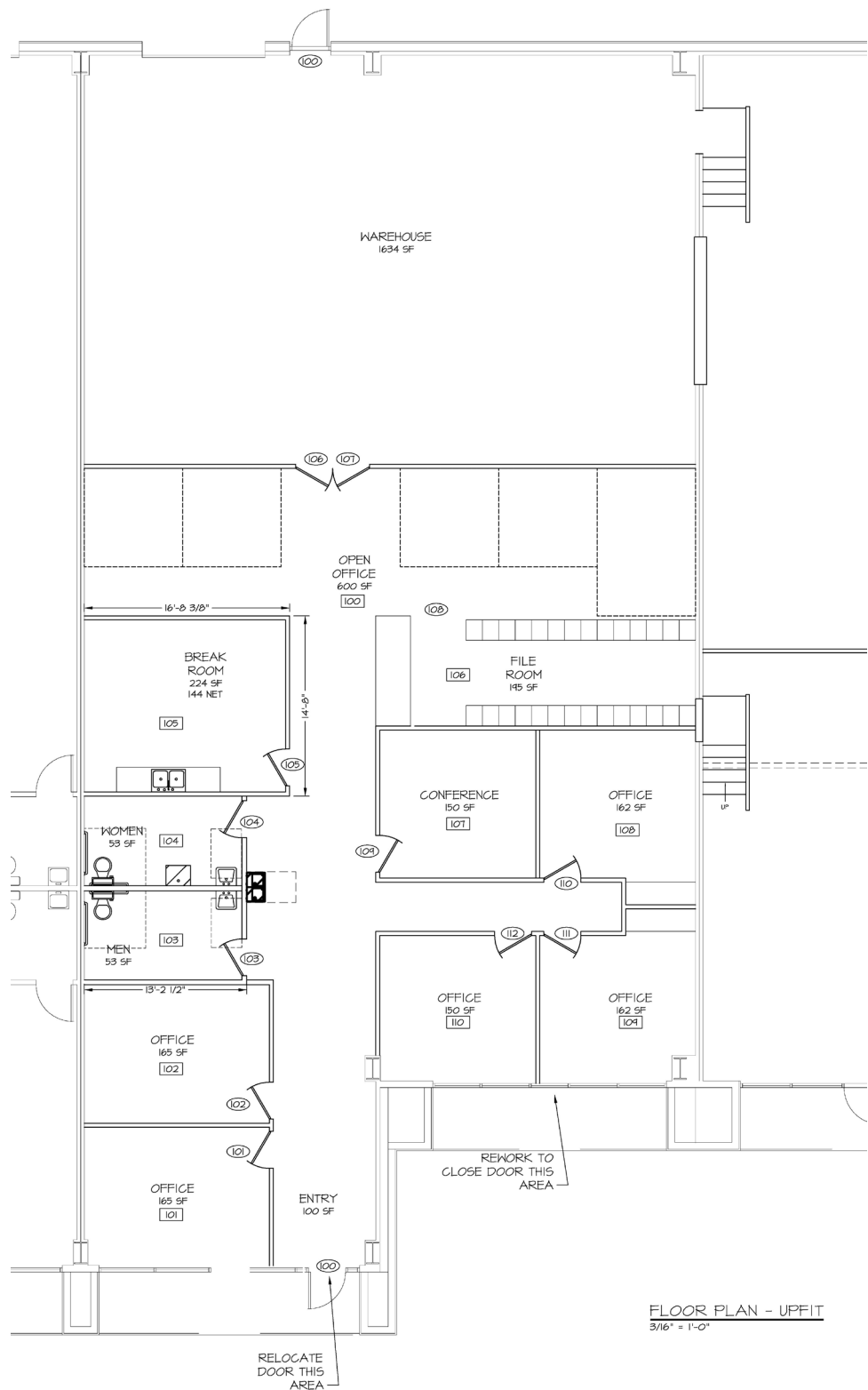


NO WARRANTY OR REPRESENTATION, EXPRESS OR IMPLIED, IS MADE AS TO THE ACCURACY OF THE INFORMATION CONTAINED HEREIN, AND THE SAME IS SUBMITTED SUBJECT TO ERRORS, OMISSIONS, CHANGE OF PRICE, RENTAL OR OTHER CONDITIONS, PRIOR SALE, LEASE OR FINANCING, OR WITHDRAWAL WITHOUT NOTICE, AND OF ANY SPECIAL LISTING CONDITIONS IMPOSED BY OUR PRINCIPALS NO WARRANTIES OR REPRESENTATIONS ARE MADE AS TO THE CONDITION OF THE PROPERTY OR ANY HAZARDS CONTAINED THEREIN ARE ANY TO BE IMPLIED.

NAI Earle Furman

101 E Washington Street Ste 400
Greenville, South Carolina 29601
864 232 9040
naiearlefurman.com

Floorplan
4474 Liberty Hwy
Suite C



NO WARRANTY OR REPRESENTATION, EXPRESS OR IMPLIED, IS MADE AS TO THE ACCURACY OF THE INFORMATION CONTAINED HEREIN, AND THE SAME IS SUBMITTED SUBJECT TO ERRORS, OMISSIONS, CHANGE OF PRICE, RENTAL OR OTHER CONDITIONS, PRIOR SALE, LEASE OR FINANCING, OR WITHDRAWAL WITHOUT NOTICE, AND OF ANY SPECIAL LISTING CONDITIONS IMPOSED BY OUR PRINCIPALS NO WARRANTIES OR REPRESENTATIONS ARE MADE AS TO THE CONDITION OF THE PROPERTY OR ANY HAZARDS CONTAINED THEREIN ARE ANY TO BE IMPLIED.