



FOR LEASE OFFICE SPACE



32-40 Court Street,
Plymouth, MA, 02360

FOR MORE INFORMATION:

BEN STOUT, CCIM

Managing Partner

bstout@atlanticproperties.com

781-248-6774

ROBERT PHINNEY

Vice President

rphinney@atlanticproperties.com

781-424-3099

32-40 Court Street, Plymouth, MA



PROPERTY DESCRIPTION

Office units immediately available with various floorplans to choose from. Easy access to Rt. 3 and centrally located in downtown Plymouth with various amenities nearby.

PROPERTY HIGHLIGHTS

- Exceptional Natural Light
- Flexible Floor Plans
- Building Signage Available
- On-Site Parking Available

OFFERING SUMMARY

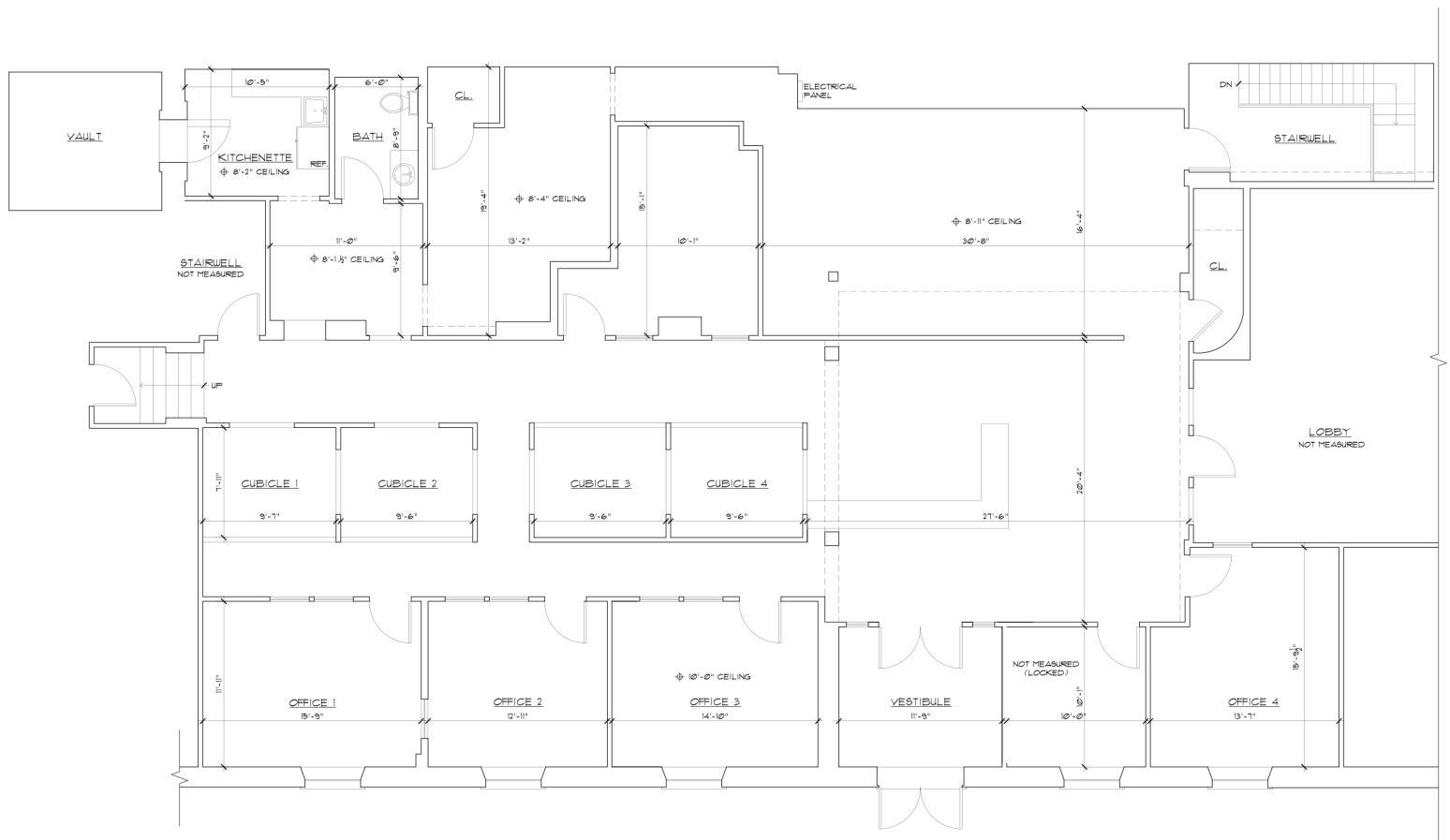
- Lease Rate: \$30.00/SF/YR (Gross)
- Lease Term: Negotiable
- Various Floor Plans Available
- Building Size: 25,754 SF

AVAILABLE SUITES

- 1,600 SF Second Floor Suite (Turnkey)
- 1,600 SF Lower-Level Suite (Turnkey with private bathroom)
- 4,400 SF (Turnkey Space on the 1st floor)

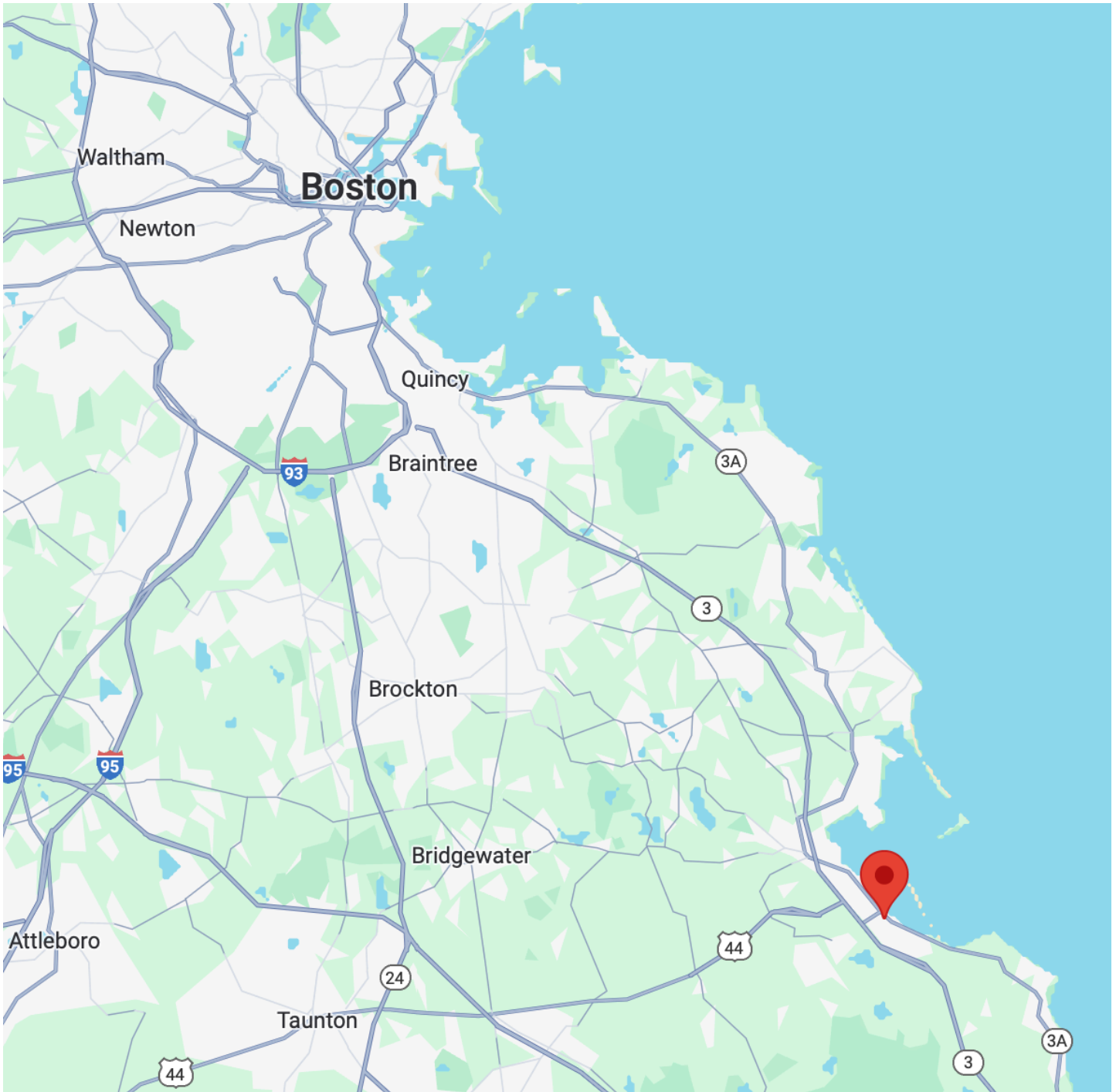
AS-BUILT FLOOR PLAN

4,400 Square Foot Unit



First Floor Plan
Scale: 1/4" = 1'-0"
— EXISTING WALLS

32-40 Court Street, Plymouth, MA



32-40 Court Street, Plymouth, MA, 02360

ADDITIONAL PHOTOS

32-40 Court Street, Plymouth, MA



ADDITIONAL PHOTOS

32-40 Court Street, Plymouth, MA



4,400 SF OFFICE
UNIT

