

# Regency West 8

R&R

Real Estate  
Advisors



**FOR LEASE**

4350 Westown Parkway, West Des Moines, IA 50266 | Regency West Office Park

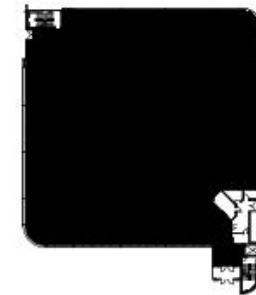
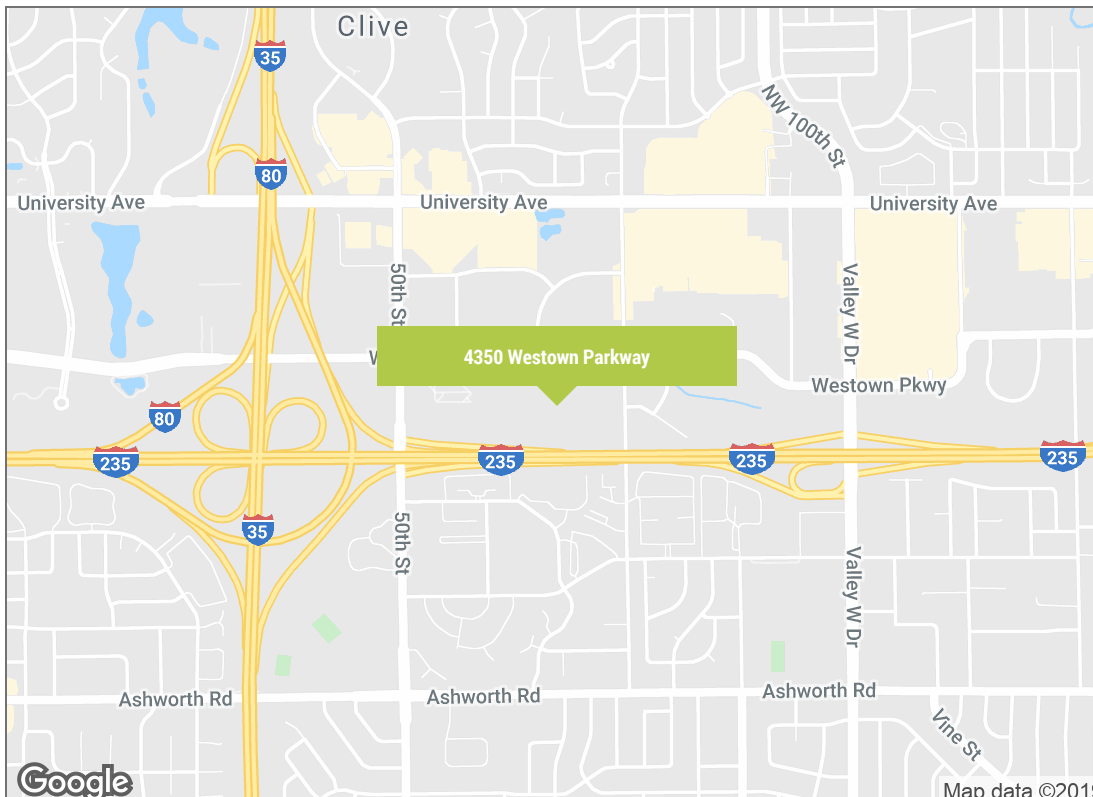
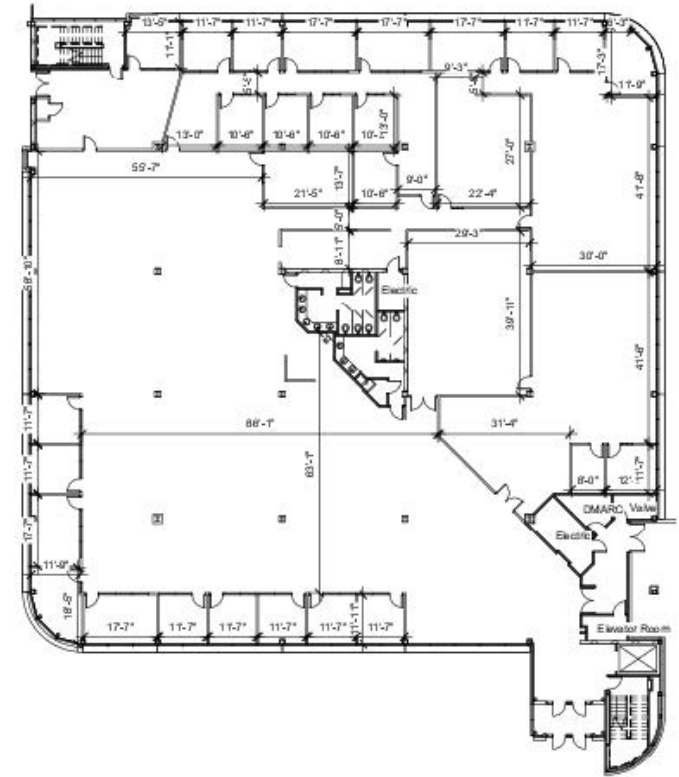
Floor 1 Availability | 93,150 SF

## Building Features

- Building & monument signage opportunities
- Plentiful, free parking
- Private fiber network – faster connectivity and low costs
- Card access security available
- Striking Class A lobby
- Attractive landscaping, fountains, sculptures, outdoor seating & plaza areas
- Highly visible from I-235

## Park Amenities

- On-site professional property management
- Wellness center with shower & locker rooms
- Immediate access to I-235, 50th Street interchange & Westtown Parkway
- Ideal West Des Moines business location near regional malls, restaurants, hotels & banking
- Flexibility to accommodate expansion needs
- Space planning/design, technology, construction & move coordination services available
- Local, long-term owner



93,150 SF