

206 Beacon Ave #1



206 Beacon Ave #1
Jersey City, NJ 07306

Live / Work Loft
25 X 89
\$4,000/month



Daniel Fleisher
C - 201.450.2508
dfleisher@libertyrealty.com
1 Marine View Plaza
Hoboken, NJ 07030



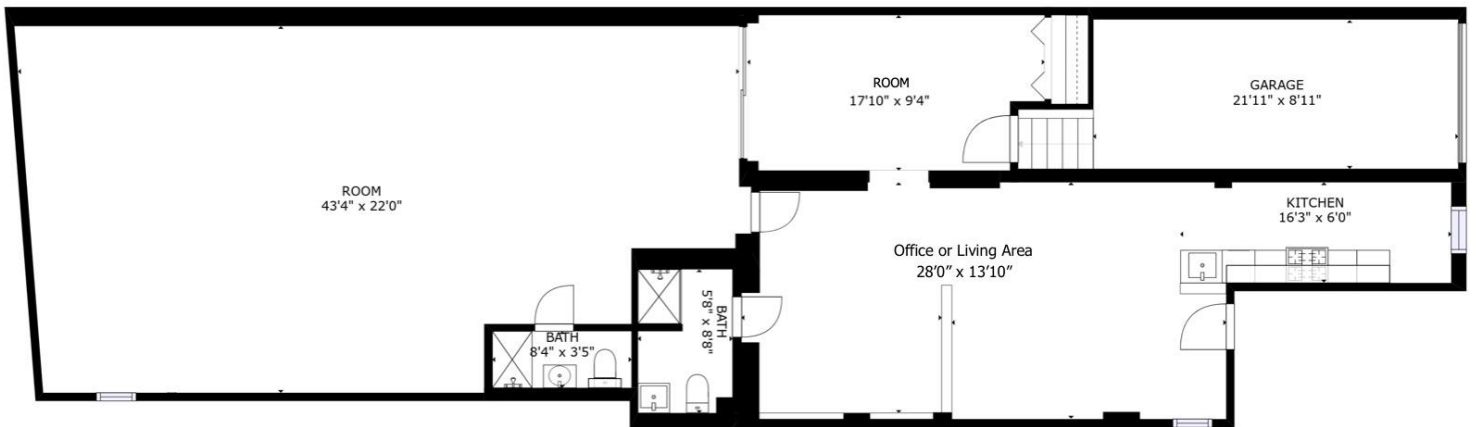
LibertyRealty.com

Daniel Fleisher
C - 201.450.2508
dfleisher@libertyrealty.com

Term Sheet

Property Address	206 Beacon Ave #1, Jersey City, NJ
Tenant Pays	Gas, Electric, Heat, Hot Water
Landlord Pays	Cold Water, Sewer
Broker Fee	One Month, split 50/50
Security Deposit	Two Months Base Rent
Rent Increase	4% Annually
Block, Lot	5501, 29
Neighborhood	Jersey City
Sub-neighborhood	Journal Square

Floor Plan



FLOOR 1

GROSS INTERNAL AREA
FLOOR 1: 1632 sq. ft, EXCLUDED AREAS:
GARAGE: 213 sq. ft

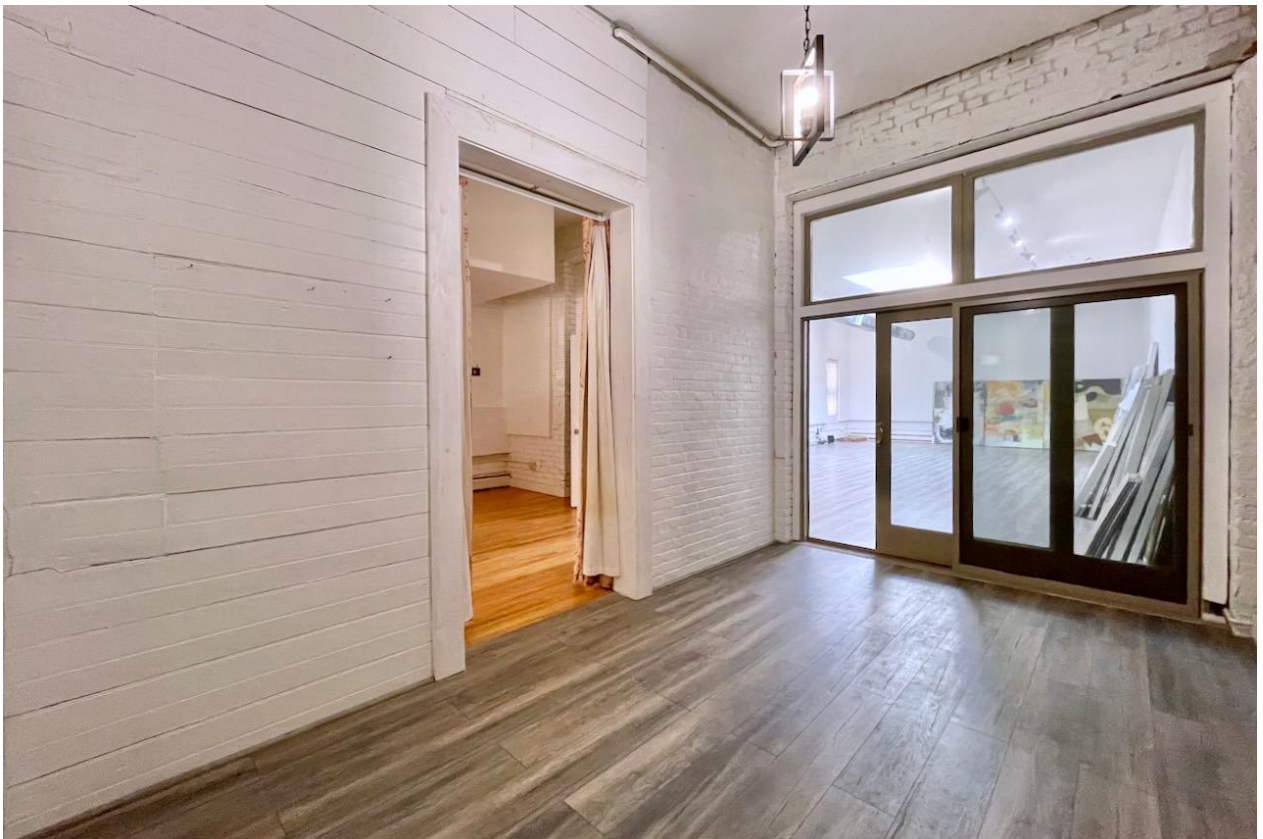
Photos



Photos



Photos



Photos



Photos



Photos



Photos



Photos

