

FOR LEASE

# FOLEY INDUSTRIAL PARK 23482 & 23520 FOLEY STREET

HAYWARD, CA



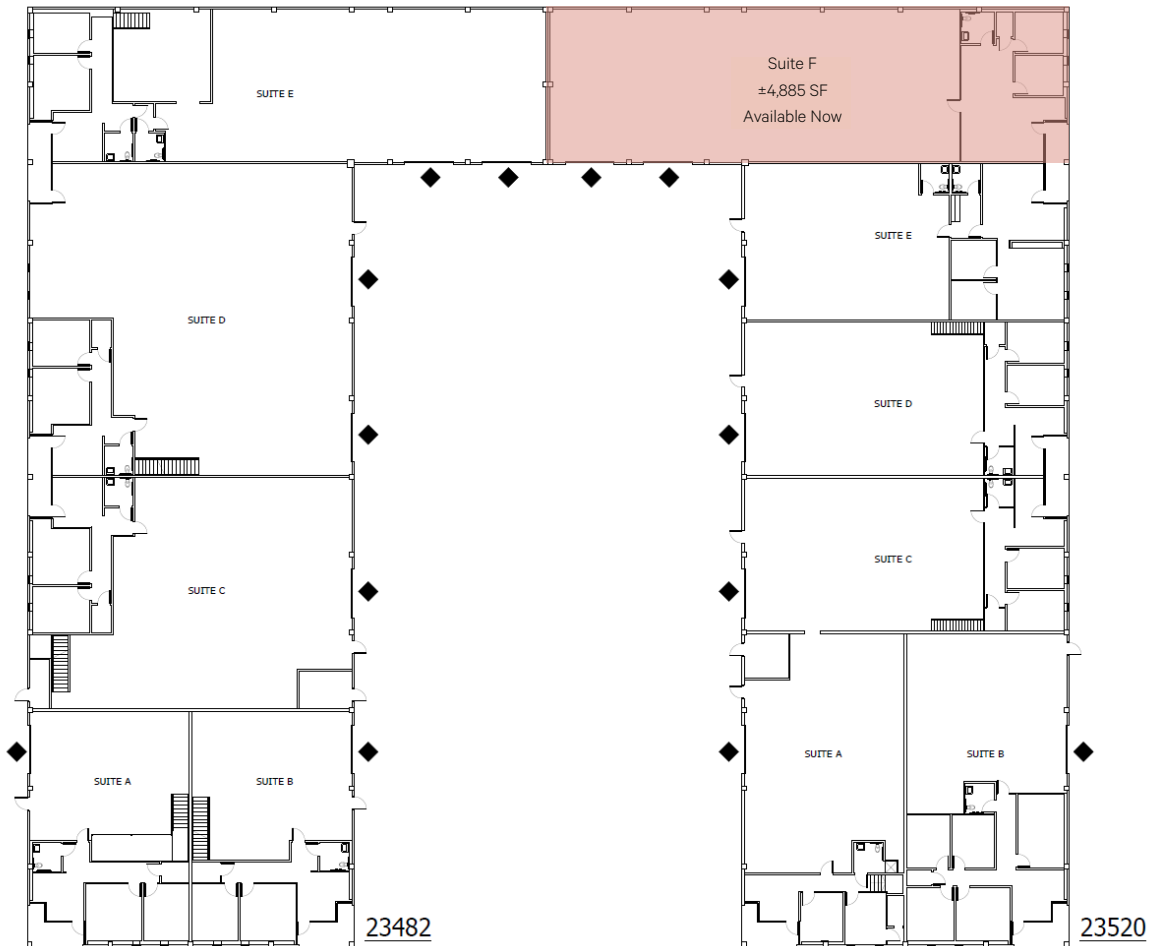
**BROOKS BAKER**  
Senior Associate  
+1 510 874 1927  
brooks.baker@cbre.com  
Lic. 02000900

Two (2) Building Multi-Tenant  
Industrial Project of  $\pm 40,400$  SF

**T** TERRENO

**CBRE**

# PHOTOS & SITE PLAN



ADDRESS	SF	OFFICE	FEATURES	POWER	RATE	AVAILABLE
23520 Foley Street, Unit F	±4,885 SF	±954 SF	2 Grade Level Doors	200 amps @ 208V	\$1.10 NNN/SF	1/1/2025

© 2024 CBRE, Inc. All rights reserved. This information has been obtained from sources believed reliable, but has not been verified for accuracy or completeness. You should conduct a careful, independent investigation of the property and verify all information. Any reliance on this information is solely at your own risk. CBRE and the CBRE logo are service marks of CBRE, Inc. All other marks displayed on this document are the property of their respective owners, and the use of such logos does not imply any affiliation with or endorsement of CBRE. Photos herein are the property of their respective owners. Use of these images without the express written consent of the owner is prohibited.