

9575 Old Gentilly Road

New Orleans, LA 70127

PROPERTY OVERVIEW



Property Description

Crushed limestone lot with 504' of frontage on Old Gentilly Road. Bound on the northern side by the CSX rail line. Conveniently located 2 miles from I-10 between NASA's Michoud Assembly Facility and the Industrial Canal. The site is currently used as excess yard for truck staging.

Offering Summary

Sale Price:	\$725,000
Lease Rate:	\$6,000.00 Per Month
Lease Type:	Modified Gross
Zoning:	BIP - Business Industrial-Park

Jordan Johnson
504.265.2000
jjohnson@beaubox.com

Guy Oswalt
251.301.7371
guy.oswalt@am.jll.com

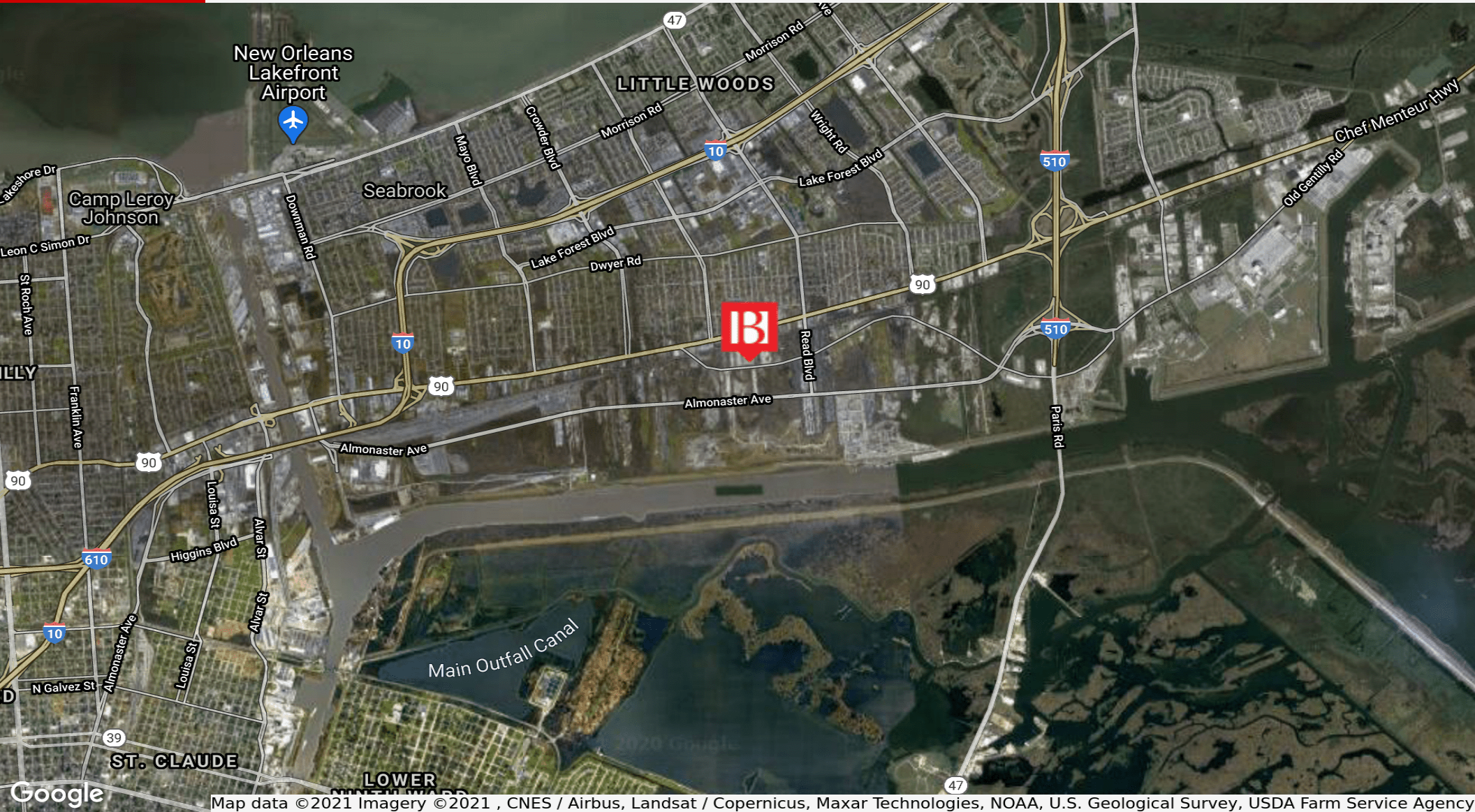
Broker of Record, Beau J. Box; Licensed by the Louisiana Real Estate Commission, Mississippi Real Estate Commission, Alabama Real Estate Commission and Florida Real Estate Commission, USA. This information has been secured from sources we believe to be reliable, but we make no representations or warranties, expressed or implied, as to the accuracy of the information. References to square footage or age are approximate. Buyer must verify the information and bears all risk for any inaccuracies. © Beau Box Commercial Real Estate. | January 06, 2021



9575 Old Gentilly Road

New Orleans, LA 70127

LOCATION MAP

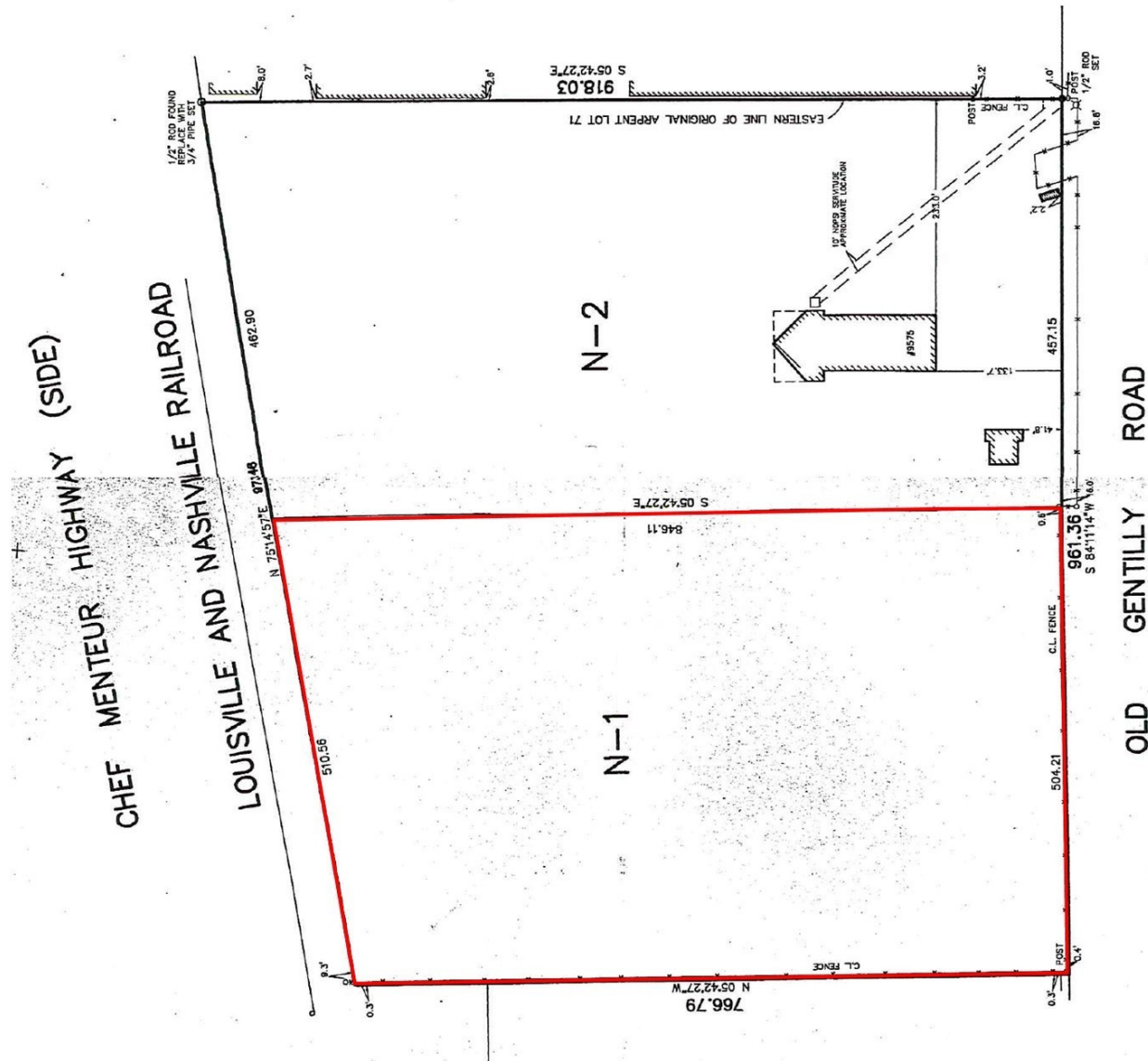


Jordan Johnson
504.265.2000
jjohnson@beaubox.com

Guy Oswalt
251.301.7371
guy.oswalt@am.jll.com

Broker of Record, Beau J. Box; Licensed by the Louisiana Real Estate Commission, Mississippi Real Estate Commission, Alabama Real Estate Commission and Florida Real Estate Commission, USA. This information has been secured from sources we believe to be reliable, but we make no representations or warranties, expressed or implied, as to the accuracy of the information. References to square footage or age are approximate. Buyer must verify the information and bears all risk for any inaccuracies. © Beau Box Commercial Real Estate. | January 06, 2021





Jordan Johnson
504.265.2000
jjohnson@beaibox.com

Guy Oswalt
251.301.7371
guy.oswalt@am.jll.com

