



1.88+/- Acre Commercial Site

1500 Town West Blvd, Port Orange, FL 32128



Julie Wallschlaeger

Realty Pros Assured

900 W Granada Blvd, Suite 3, Ormond Beach, FL 32174

Julie@realtyprosassured.com

(386) 478-9265



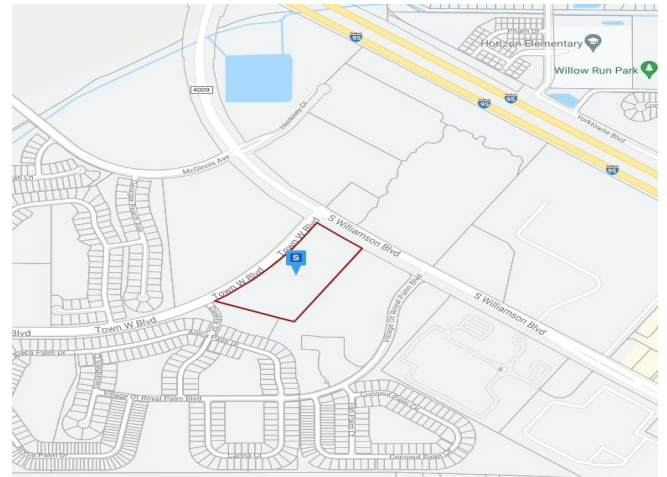
1.88+/- Acre Commercial Site

\$1,250,000

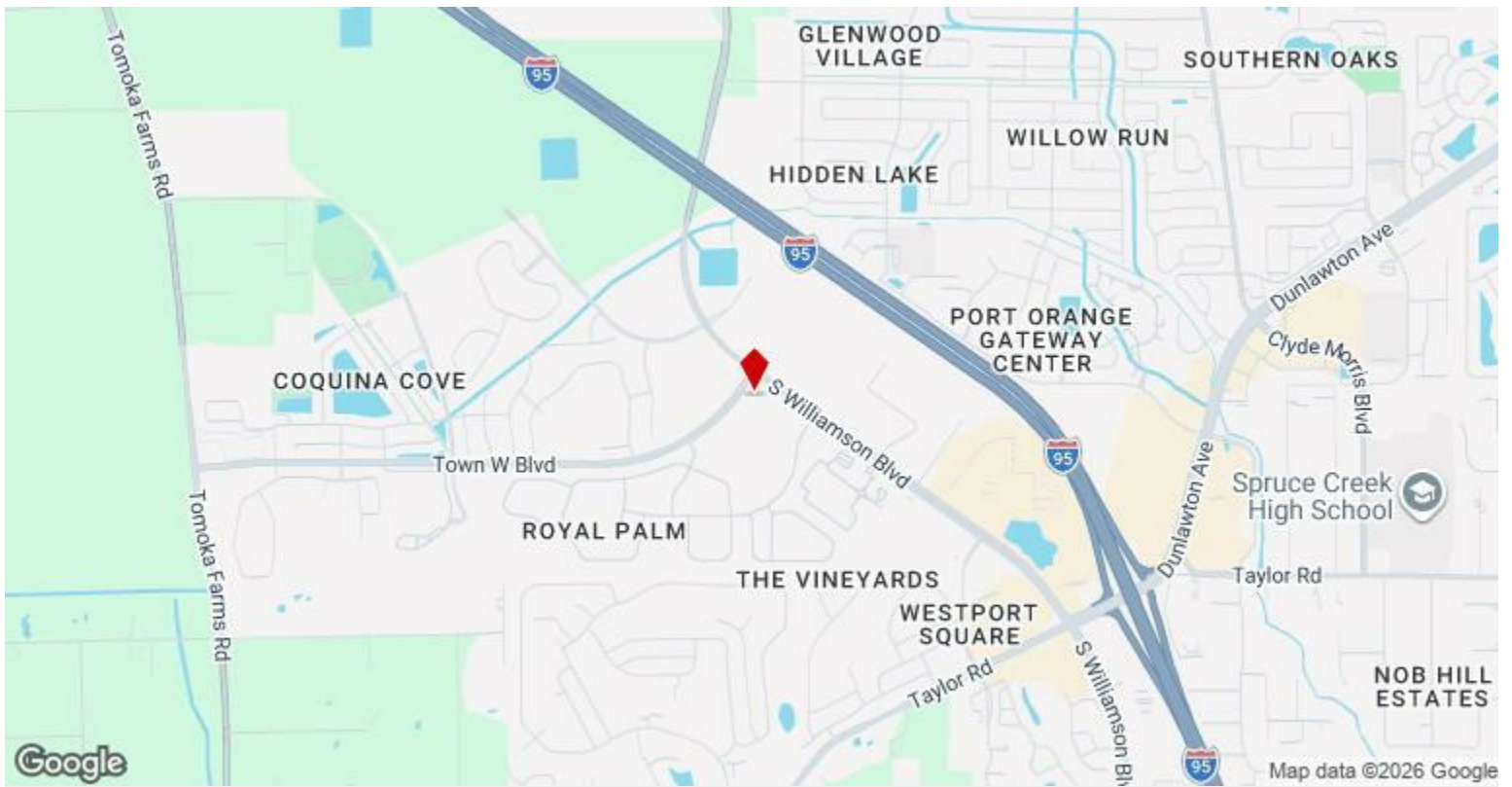
High-Exposure 1.88-Acre Commercial Lot in Port Orange - 42,500 Cars Daily! This strategically located corner property offers exceptional development potential for retail, office, multi-family, or mixed-use projects. Positioned in a rapidly growing area with established neighborhoods and strong business activity, the lot promises visibility, accessibility, and long-term value appreciation. Water...

High-Exposure 1.88-Acre Commercial Lot in Port Orange - 42,500 Cars Daily! This strategically located corner property offers exceptional development potential for retail, office, multi-family, or mixed-use projects. Positioned in a rapidly growing area with established neighborhoods and strong business activity, the lot promises visibility, accessibility, and long-term value appreciation. Water...

- HEAVY TRAFFIC 42,500 CARS DAILY
- POSITIONED IN RAPIDLY GROWING AREA
- WATER ,SEWER & ELECTRICITY AT LOT



Price:	\$1,250,000
Property Type:	Land
Property Subtype:	Commercial
Proposed Use:	Commercial
Sale Type:	Investment or Owner User
Total Lot Size:	1.87 AC
Sale Conditions:	High Vacancy Property
No. Lots:	1
Zoning Description:	PC-A
APN / Parcel ID:	6213-14-00-0010



1500 Town West Blvd, Port Orange, FL 32128

High-Exposure 1.88-Acre Commercial Lot in Port Orange - 42,500 Cars Daily! This strategically located corner property offers exceptional development potential for retail, office, multi-family, or mixed-use projects. Positioned in a rapidly growing area with established neighborhoods and strong business activity, the lot promises visibility, accessibility, and long-term value appreciation. Water and sewer at lot, driveway in place, no water retention pond needed on site as connected to master retention pond. Ideal for investors seeking a prime Port Orange opportunity.

Property Photos



Property Photos

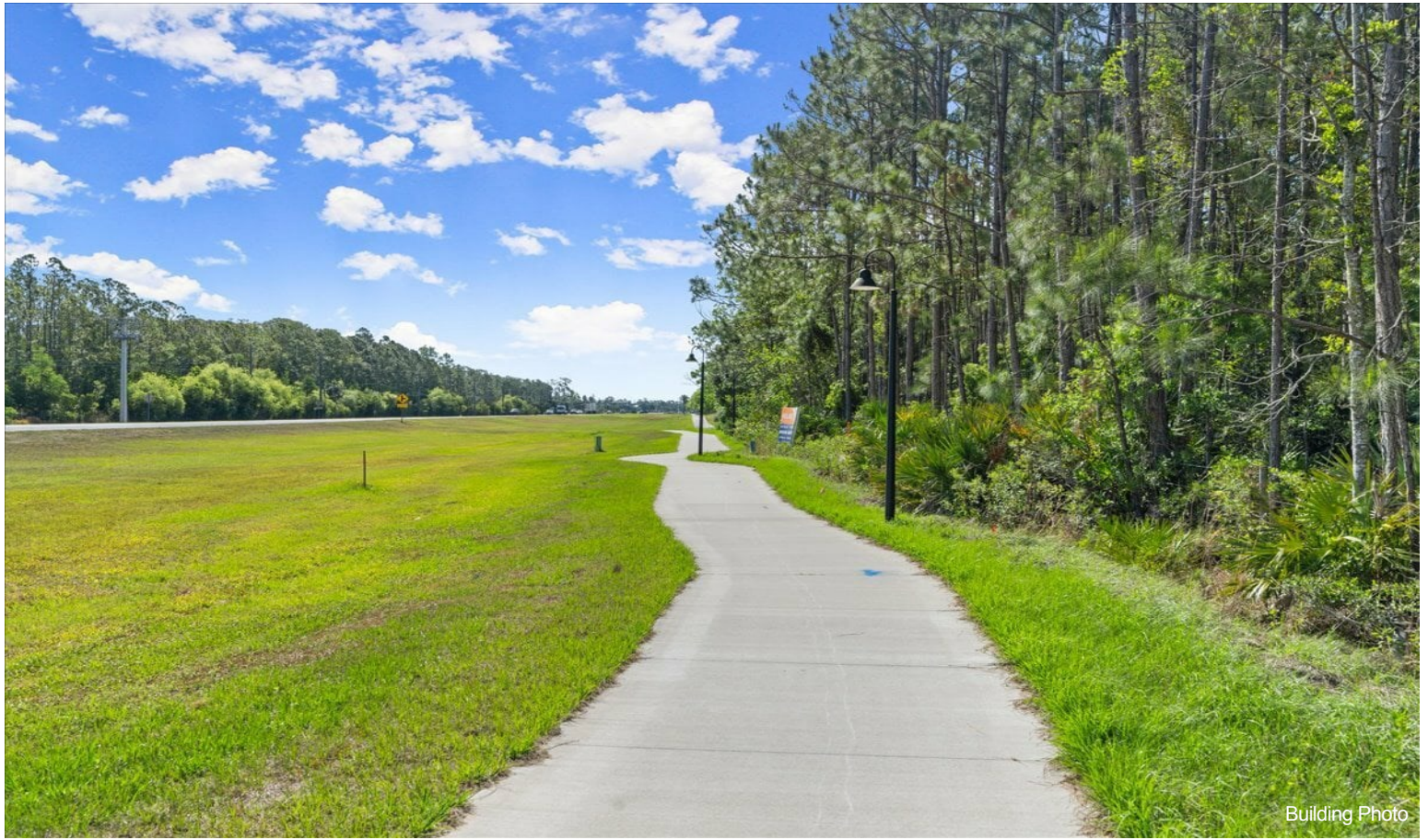


Building Photo



Building Photo

Property Photos



Building Photo



Building Photo

Property Photos



Building Photo



Building Photo

Property Photos



Building Photo



Building Photo

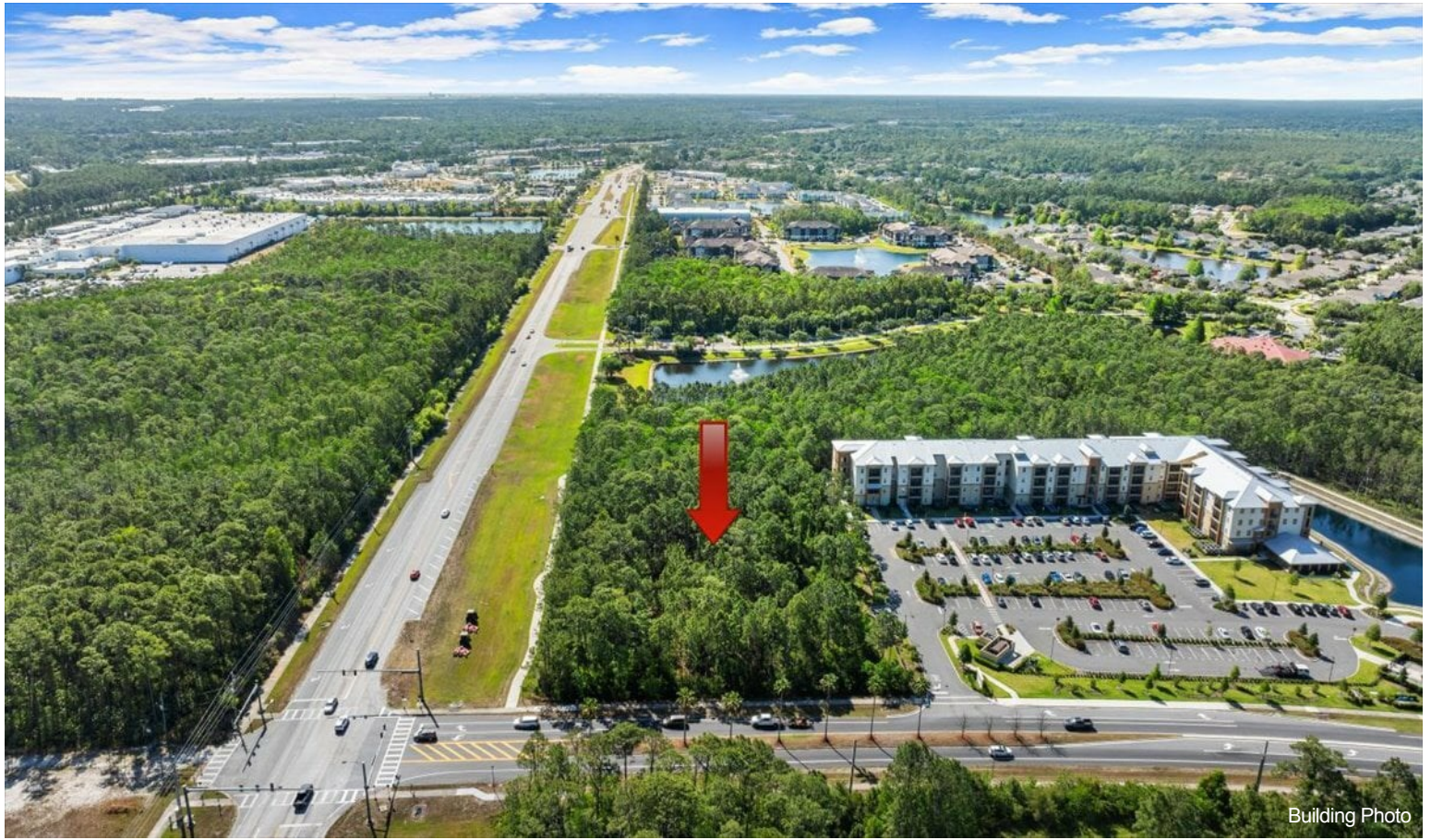
Property Photos



Property Photos



Property Photos



Building Photo

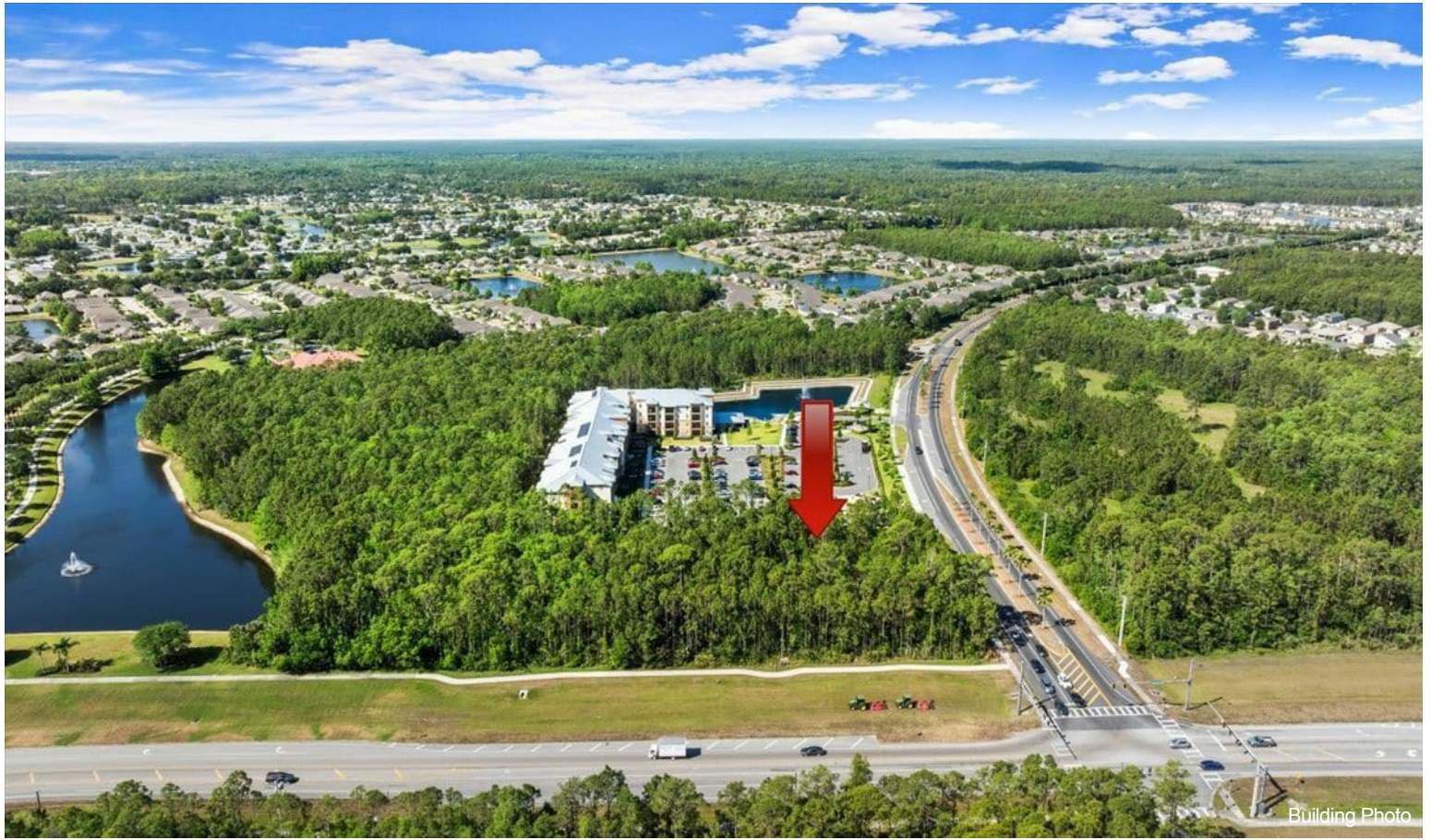


Building Photo

Property Photos



Property Photos



Property Photos



Property Photos



Building Photo



Building Photo

Property Photos

